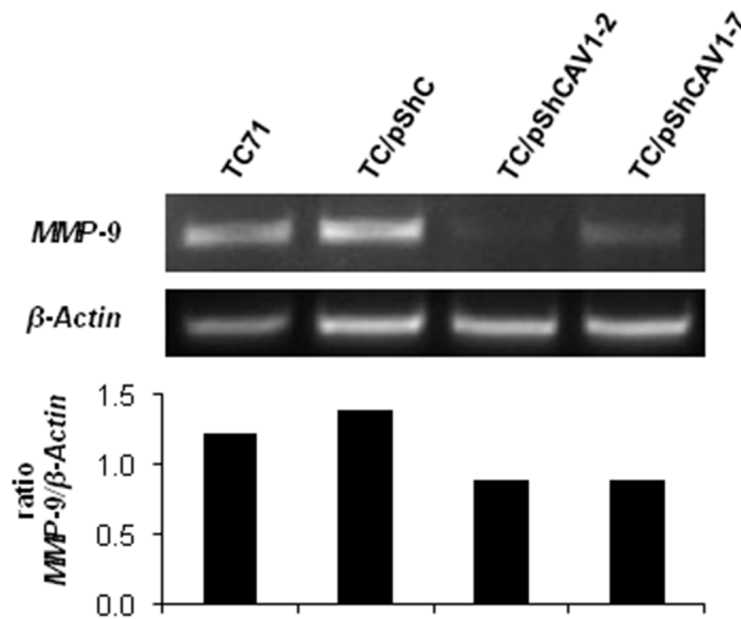


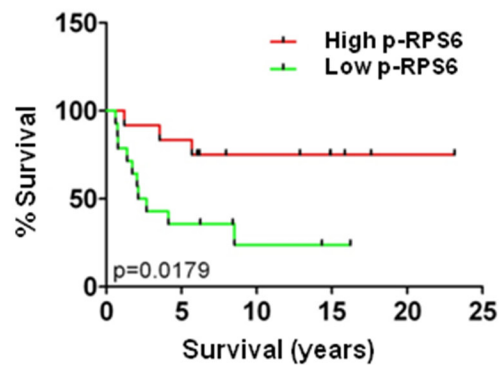
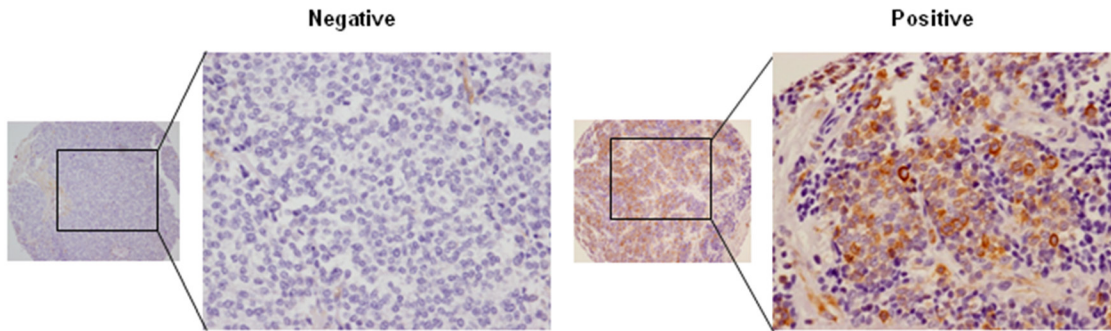
Caveolin-1 promotes Ewing sarcoma metastasis regulating MMP-9 expression through MAPK/ERK pathway

SUPPLEMENTARY FIGURES AND TABLES



Supplementary Figure S1: MMP-9 expression in TC71 CAV1-silenced cells. Semi-quantitative RT-PCR and corresponding quantification showing *MMP-9*/ *β -Actin* ratio in the TC71 shCAV1 model.

p-RPS6 (n=26)	Stage		Tumor size		Tumor site	
	Localized	Metastatic	<8cm	>8cm	Axial	Extremity
Negative	8	6	4	10	9	5
Positive	10	2	5	7	7	5



Supplementary Figure S2: High phosphorylation levels of RPS6 are a good prognostic marker in ES tumors. Above: Summary of TMA data with regard to p-RPS6 expression (negative *versus* positive) and clinical features. Middle: Example of negative and positive p-RPS6 staining of ES patient samples from the TMA (magnification, $\times 40$; insert, $\times 400$). Survival curve showed a positive correlation between high level of p-RPS6 and patient survival. Survival curve was generated by Kaplan-Meier method and compared by using the log rank test.

Supplementary Table S1: Table shows the most significant receptor tyrosine kinase (RTK) up and downregulated in A673 CAV1-silenced cells

UniGene	GeneBank	Symbol	Description	Phosphorylation site detected	Gene name
Proteins inhibited in CAV1 knockdown A673 cells					
Hs.171596	BC037166	EphA2	Ephrin type-A receptor 2	pan-Tyr	EphA2
Hs.350321	X15262	Ret	Proto-oncogene tyrosine-protein kinase receptor Ret	pan-Tyr	RET, CDHF12, CDHR16, PTC, RET51
Hs.408073	M77232	S6	40S ribosomal protein S6	Ser 235/236	RPS6, OK/SW-cl.2
Hs.861	EU332853	ERK1	Mitogen-activated protein kinase 3	Thr202/Tyr204	MAPK3, ERK1, PRKM3
Hs.195659	CH471077	Src	Proto-oncogene tyrosine-protein kinase Src	pan-Tyr	SRC
Proteins activated in CAV1 knockdown A673 cells					
Hs.525622	AB451242	AKT1	RAC-alpha serine/threonine-protein kinase	Thr 308	AKT1, PKB, RAC
Hs.352548	BC126481	IGF-IR	IGF-like family receptor 1	pan-Tyr	IGFLR1

Supplementary Table S2: Tissue microarray patient (TMA) dataset

See Supplementary File 1