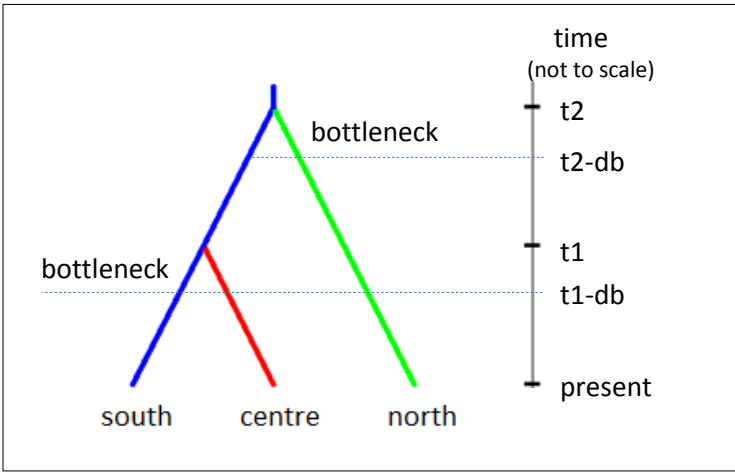


**Figure S2**

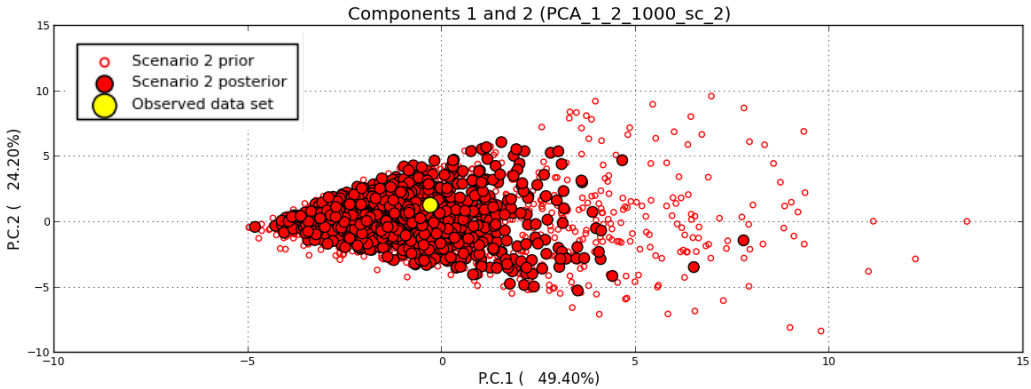
**A**



**B**

time	event	population affected	outliers (total stats=39)					
			< 0.05			> 0.95		
			*	**	***	*	**	***
<b>t2</b>	divergence of north from centre-south	north	0	0	0	2	0	0
		centre-south	0	0	0	1	0	0
		north and centre-south	0	0	0	1	0	0
<b>t1</b>	divergence of south and central	centre	0	0	0	1	0	0
		south	0	0	0	1	0	0
		centre and south	0	0	0	2	0	0

**C**



**D**

population	time (x10 <sup>6</sup> )		n	prior U[10 <sup>3</sup> ,10 <sup>7</sup> ]	Bottleneck Wilcoxon test W=11 P value=0.4857
	mean	se			
north	6.16	0.17	4		
south-central	5.75	0.481	4		

**E**

population	time (x10 <sup>6</sup> )		n	prior U[10 <sup>3</sup> ,10 <sup>7</sup> ]	Expansion Wilcoxon test W=3 P value=0.7
	mean	se			
north	2.10	0.12	3		
south-central	2.21	0.09	3		