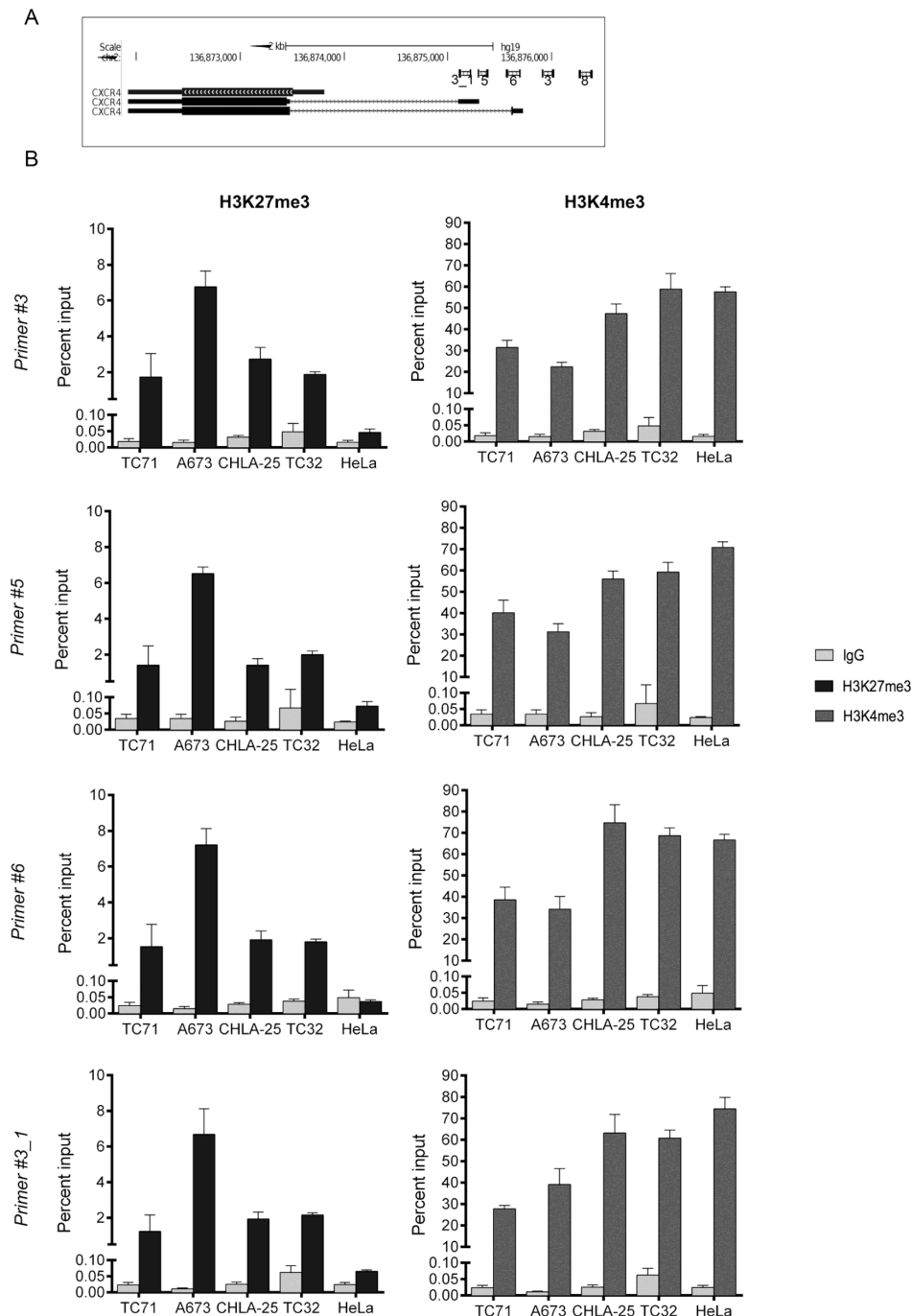


A bivalent promoter contributes to stress-induced plasticity of CXCR4 in Ewing sarcoma

SUPPLEMENTARY FIGURE AND TABLE



Supplementary Figure S1: Additional primer pairs for directed ChIP-PCR of *CXCR4* promoter. A. Map of primer pairs designed for the *CXCR4* promoter region. Primer pair #8 was used for studies shown in main figures B. ChIP-qPCR using additional primers confirmed enrichment of H3K4me3 and H3K27me3 at the *CXCR4* promoter in Ewing sarcoma cells and only H3K4me3 in HeLa cells. Data represented as mean \pm SEM of three independent experiments.

Supplementary Table S1: PCR primer sequences

CXCR4 Promoter			
Primer pair	Forward	Reverse	Size (bp)
#3	5'- GGG TGG TCG GTA GTG AGT CC -3'	5'- CAG AGA GAC GCG TTC CTA GC -3'	120
#5	5'- ACG CCT TCT CTG CAG TTG TG -3'	5'- TTC CAG TGG CTG CAT GTG TC -3'	105
#6	5'- GGG CTG CGC TCT AAG TTC AA -3'	5'- TAG CAA AGT GAC GCC GAG G -3'	144
#3_1	5'- GGG ATG TCT TGG AGC GAG TT -3'	5'- AAC AGT CAC CAG GCG CTT AA -3'	122
#8	5'- TCA CTA GGG TCA GGT GCA GA -3'	5'- TCG CGA ATT GGT TAC CGC TA -3'	131