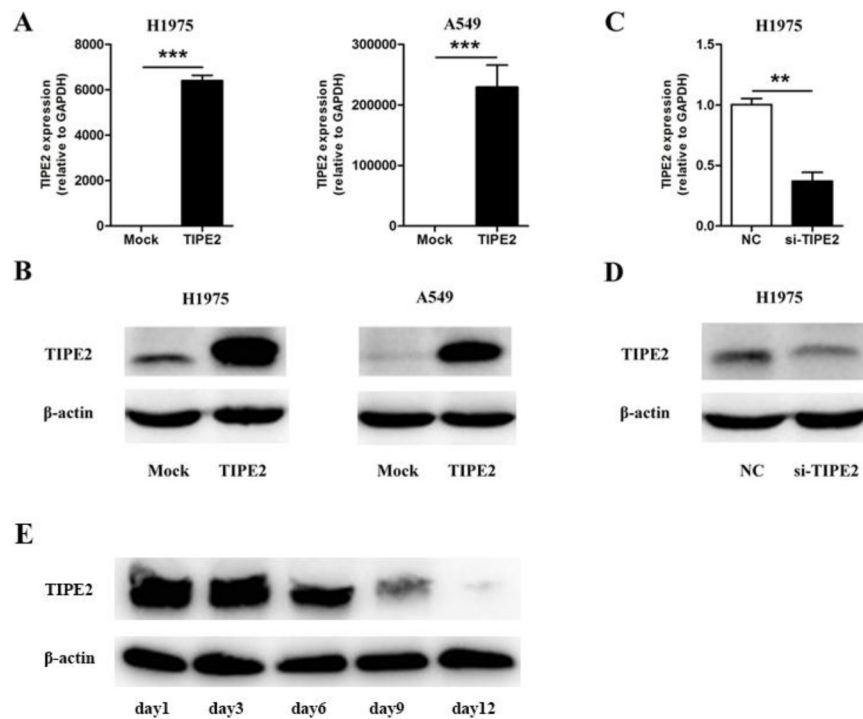


## TIPE2 suppresses angiogenesis and non-small cell lung cancer (NSCLC) invasiveness via inhibiting Rac1 activation and VEGF expression

### SUPPLEMENTARY FIGURES AND TABLES



**Supplementary Figure S1: Effects of transfection that validated by real-time PCR and western blot.** **A.** TIPE2 mRNA expression in H1975 and A549 was detected by real-time PCR after transient transfection with mock or TIPE2 plasmid. **B.** TIPE2 protein expression in H1975 and A549 was detected by western blot after transient transfection with mock or TIPE2 plasmid. **C.** TIPE2 mRNA expression in H1975 cells was detected by real-time PCR after transient transfection with TIPE2 siRNA or negative control. **D.** TIPE2 protein expression in H1975 cells was detected by western blot after transient transfection with TIPE2 siRNA or negative control. **E.** TIPE2 protein expression in H1975 cells was detected by western blot 1, 3, 6, 9, 12 days after transient transfection with TIPE2 plasmid respectively. Data represent mean±SD from three independent experiments. \*,  $P < 0.05$ ; \*\*,  $P < 0.01$ ; \*\*\*,  $P < 0.001$ .

