

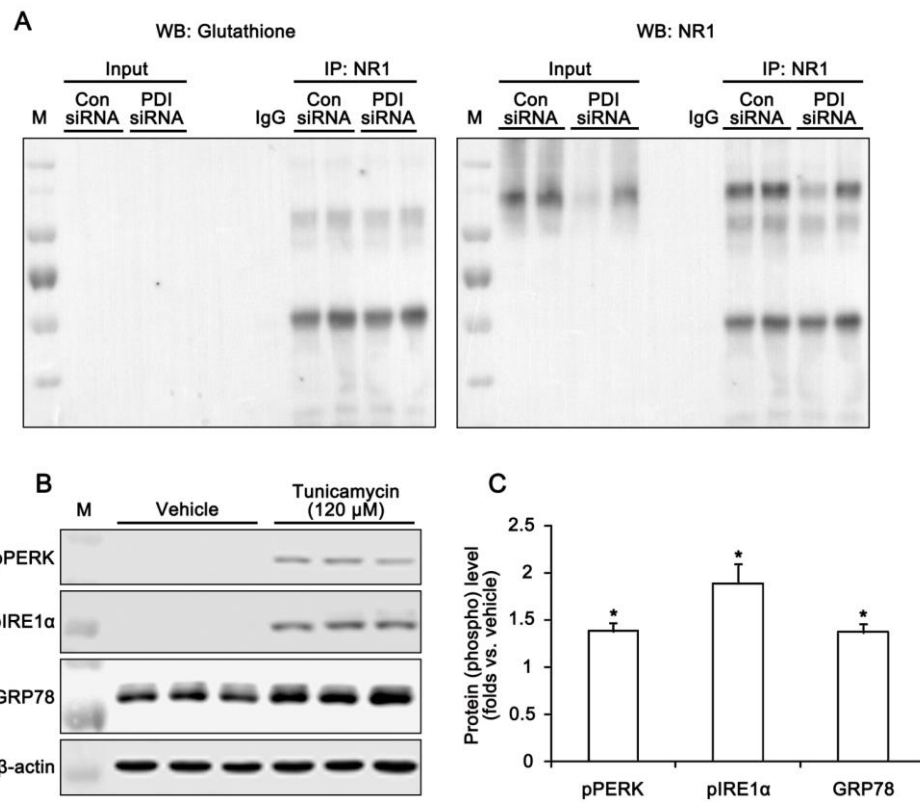
Supplementary information

PDI regulates seizure activity via NMDA receptor redox in rats

Ji Yang Kim^{*}, Ah-Rhem Ko^{*}, Hye-Won Hyun, Su-Ji Min, Ji-Eun Kim^{}**

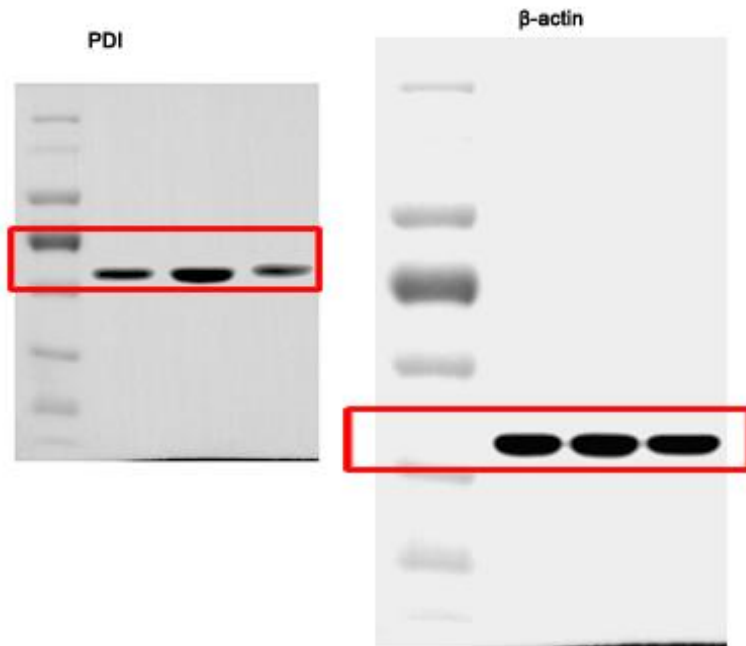
Department of Anatomy and Neurobiology, Institute of Epilepsy Research, College of Medicine, Hallym University, Chuncheon 24252, South Korea.

**** Address correspondence to:** Dr. Ji-Eun Kim, Department of Anatomy and Neurobiology, Institute of Epilepsy Research, College of Medicine, Hallym University, Chuncheon, Kangwon-Do, 24252, South Korea; jjieunkim@hallym.ac.kr



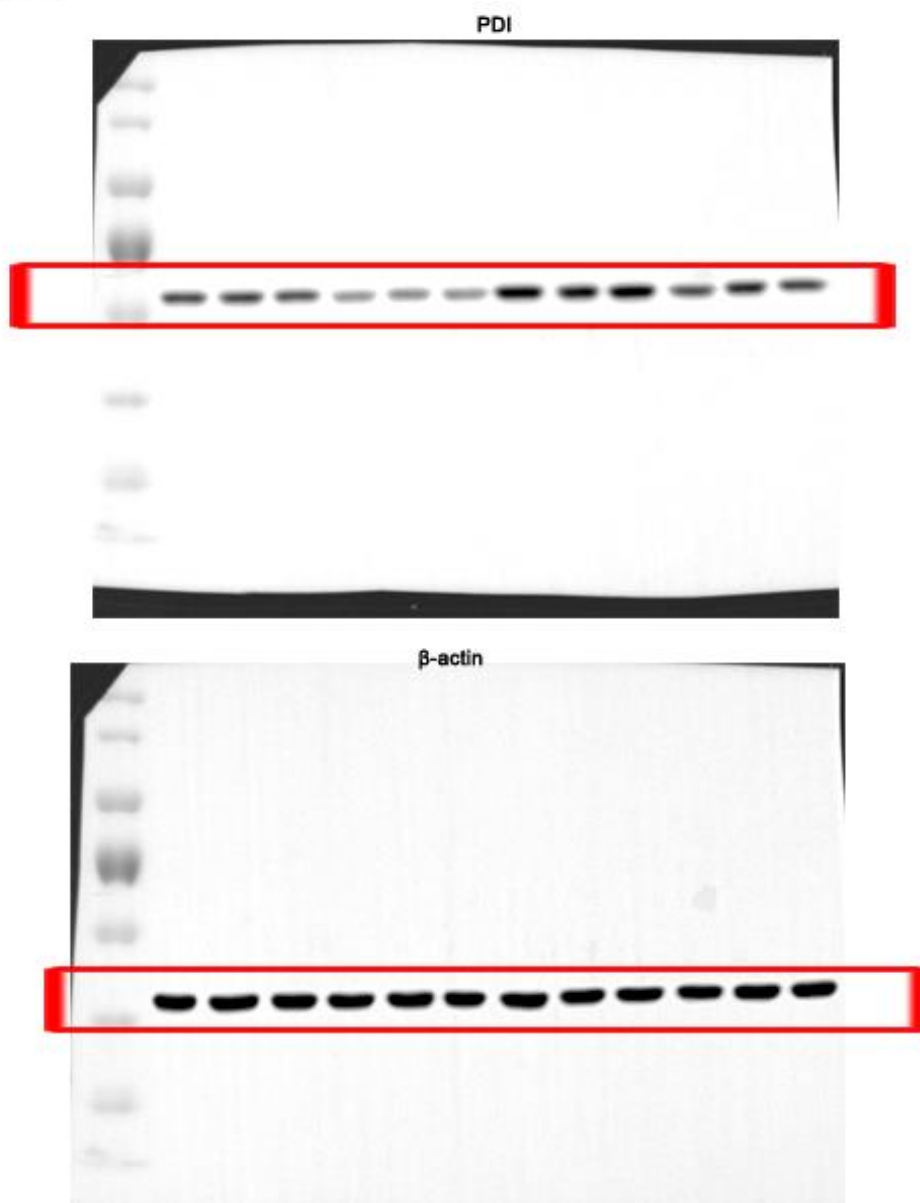
Supplementary Figure 1. (A) Effect of PDI knockdown on glutathionylation-mediated NMDAR redox signals. There is the glutathionylation on NR1 subunit in control siRNA- and PDI siRNA-infused animals. (B) Effect of tunicamycin on ER stress. Tunicamycin increases pPERK, pIRE1 α and GRP78 expression in the rat hippocampus, as compared to vehicle (mean \pm S.E.M.; * p < 0.05 vs. normal; n = 5, respectively).

Fig. 1B

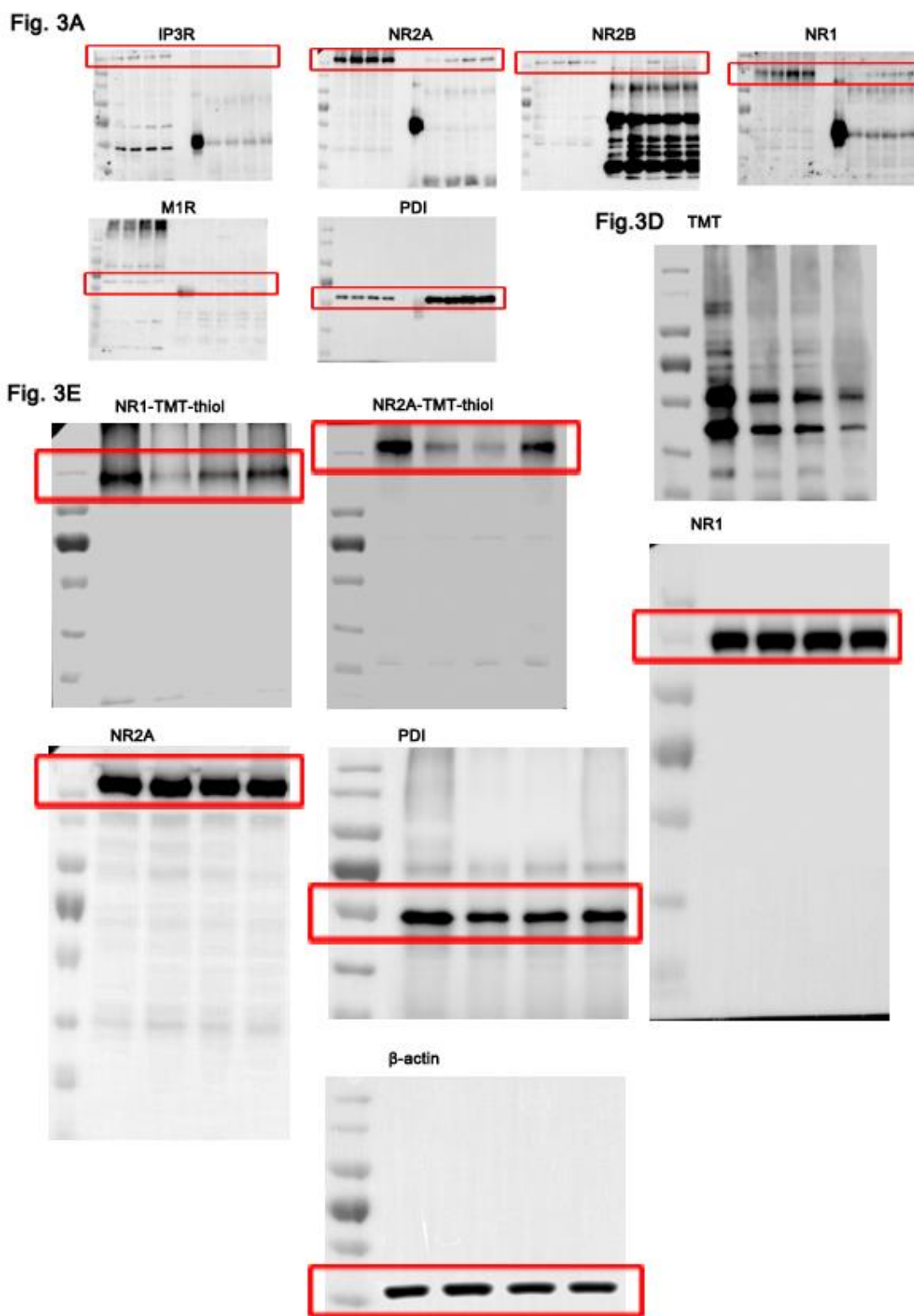


Supplementary Figure 2. Full-length gel images of western blot data in Figure 1. The cropped parts of western blots are indicated with boxes.

Fig. 2A.

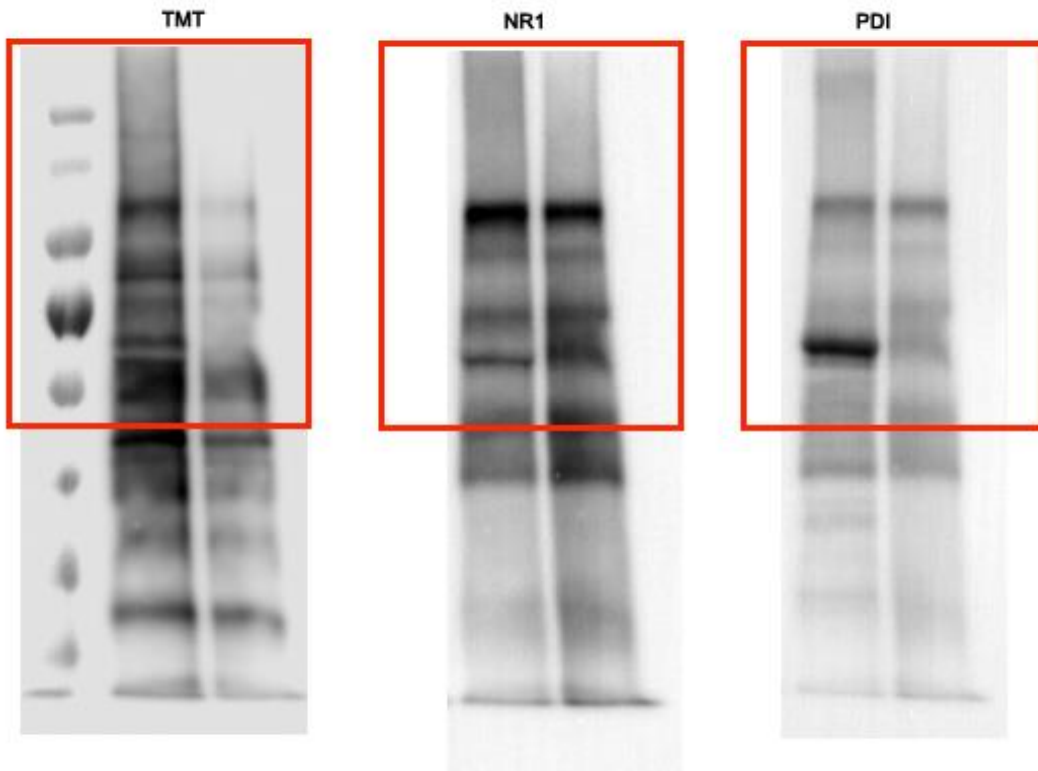


Supplementary Figure 3. Full-length gel images of western blot data in Figure 2. The cropped parts of western blots are indicated with boxes.



Supplementary Figure 4. Full-length gel images of western blot data in Figure 3. The cropped parts of western blots are indicated with boxes.

Fig. 4D



Supplementary Figure 5. Full-length gel images of western blot data in Figure 4. The cropped parts of western blots are indicated with boxes.

Fig. 5A

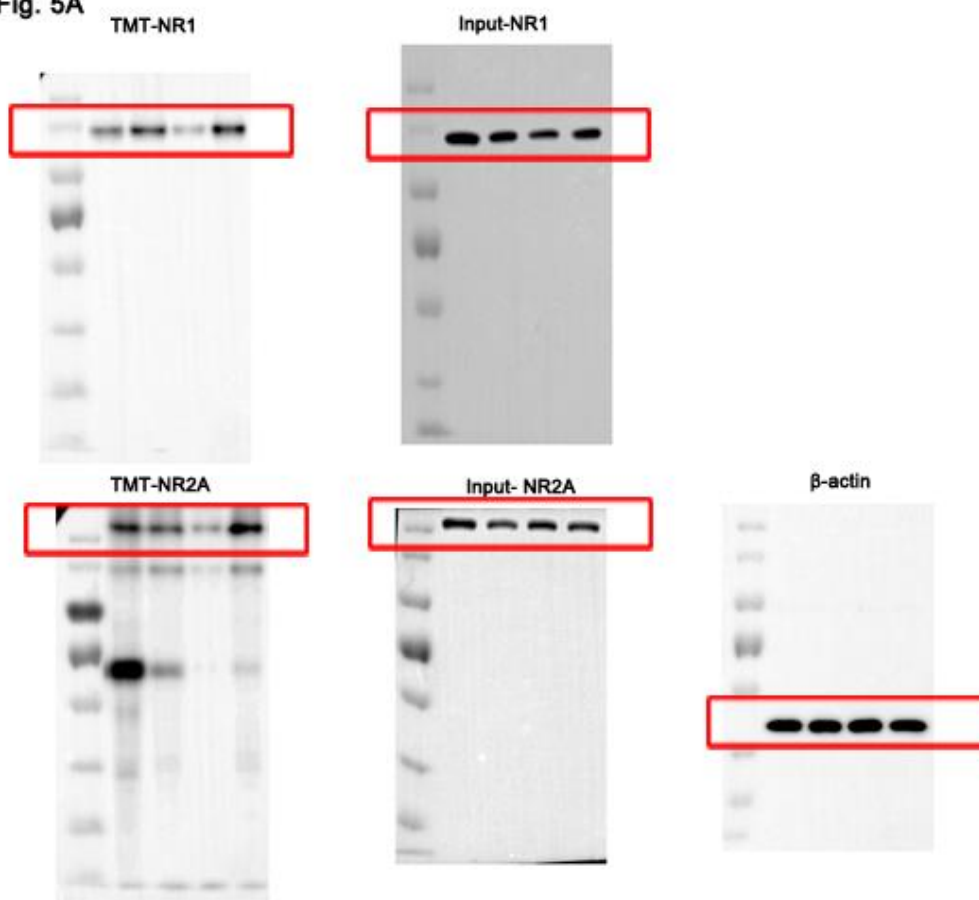
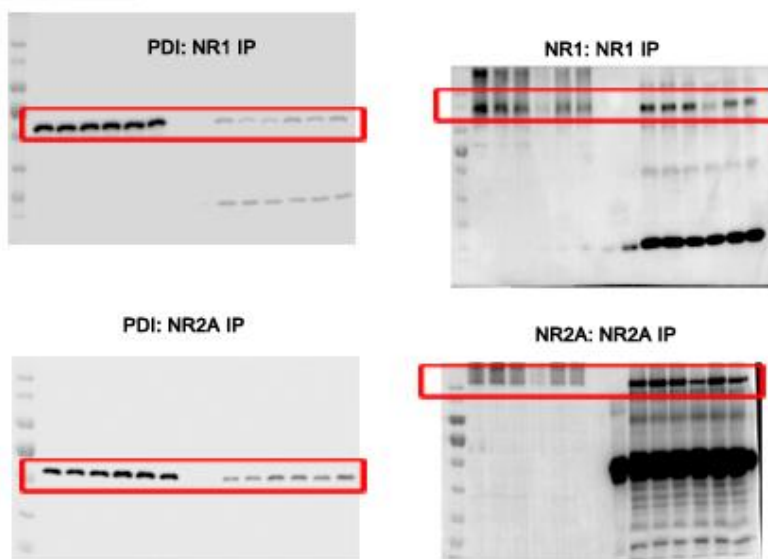


Fig. 5D



Supplementary Figure 6. Full-length gel images of western blot data in Figure 5. The cropped parts of western blots are indicated with boxes.

Fig. 6E

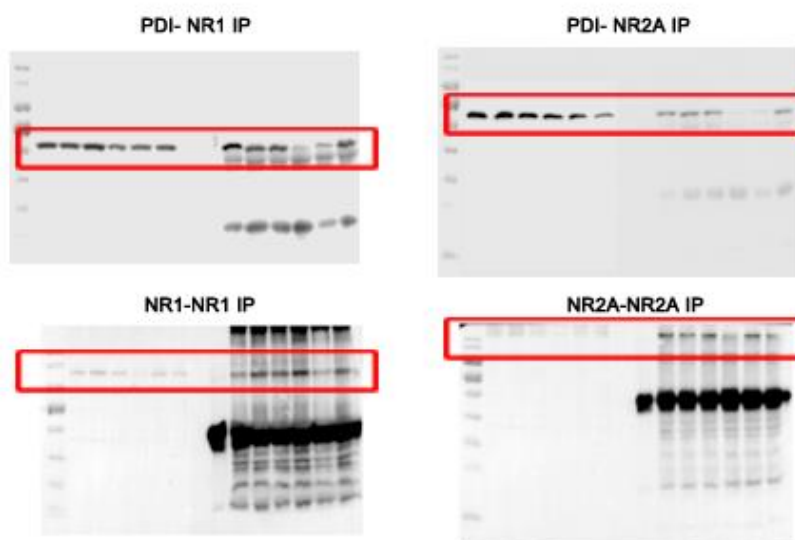
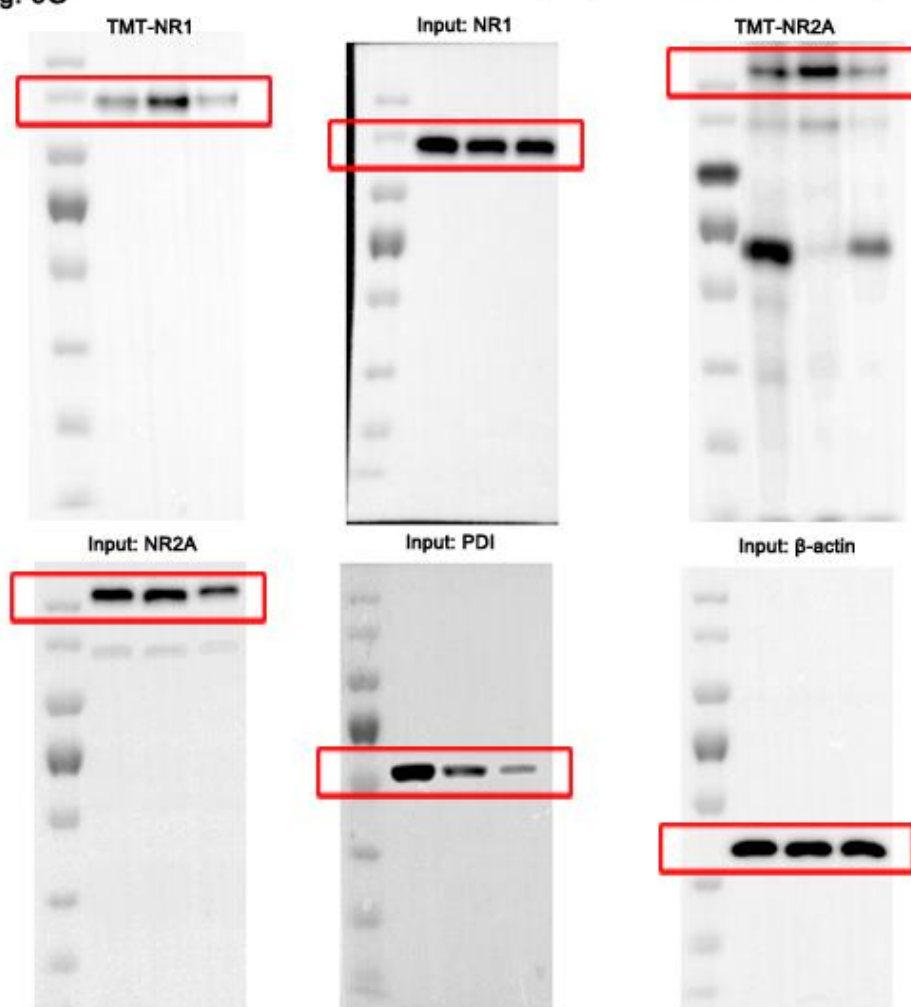


Fig. 6G



Supplementary Figure 7. Full-length gel images of western blot data in Figure 6. The cropped parts of western blots are indicated with boxes.

Fig. 7A

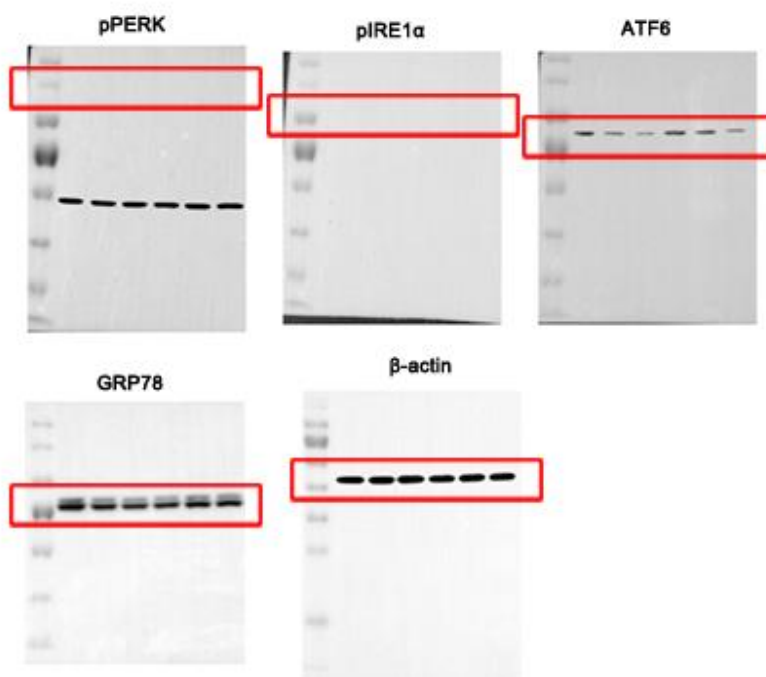
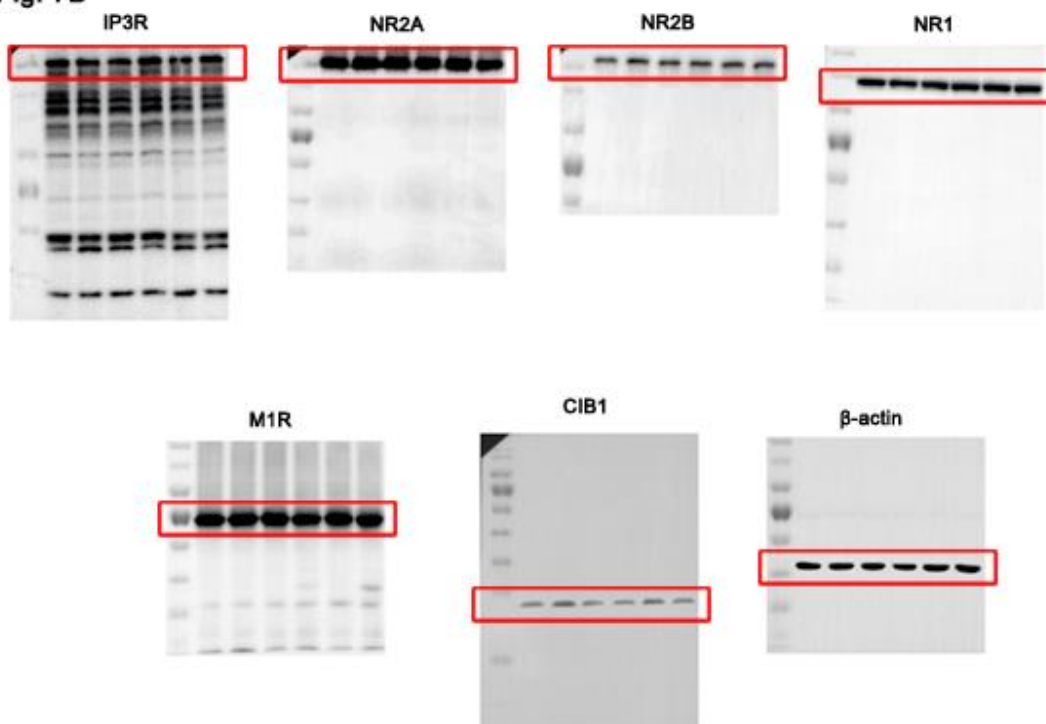
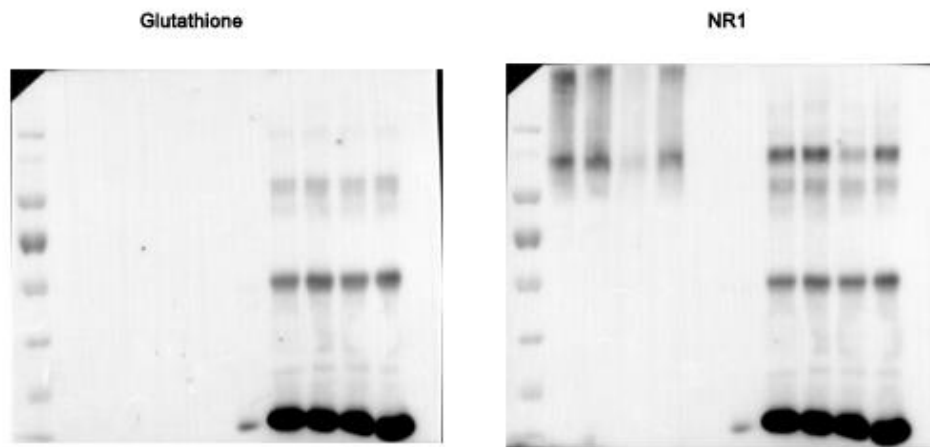


Fig. 7B



Supplementary Figure 8. Full-length gel images of western blot data in Figure 7. The cropped parts of western blots are indicated with boxes.

SFig. 1A



SFig. 1B



Supplementary Figure 9. Full-length gel images of western blot data in Supplementary figure 1. The cropped parts of western blots are indicated with boxes.