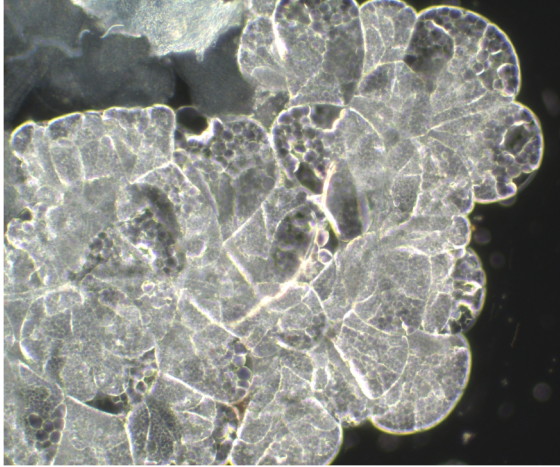
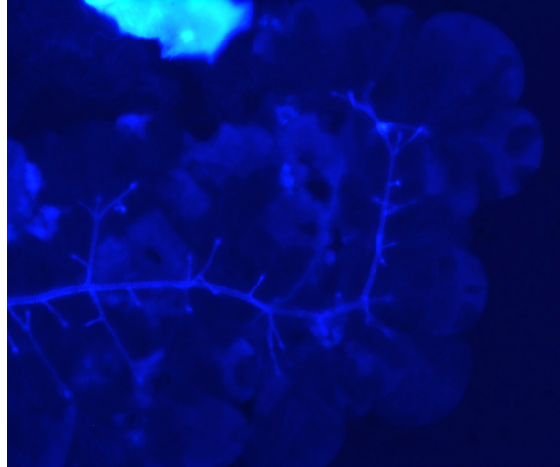


Supplemental Figure 1

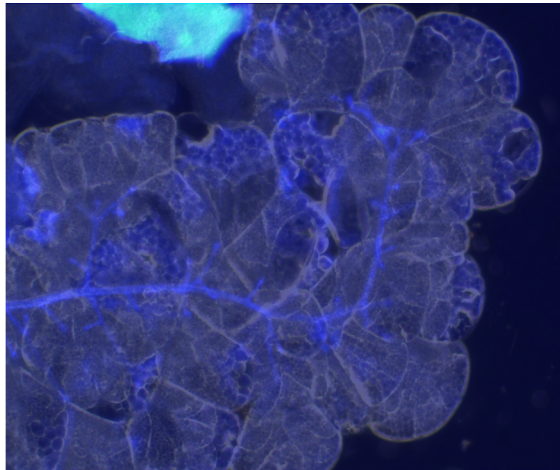
A



B

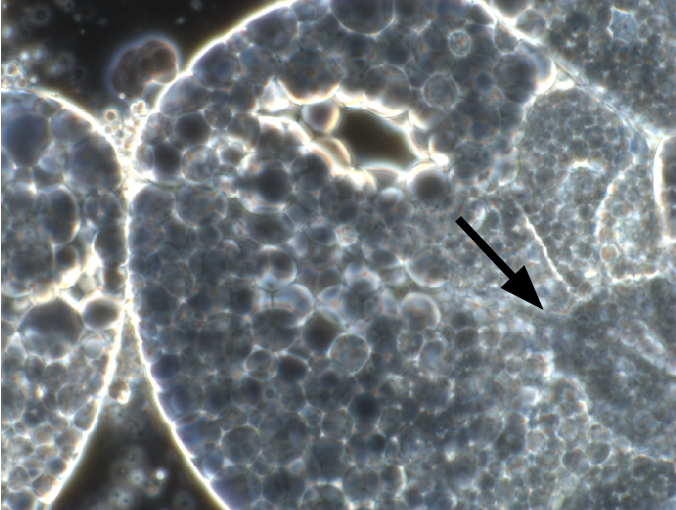


C

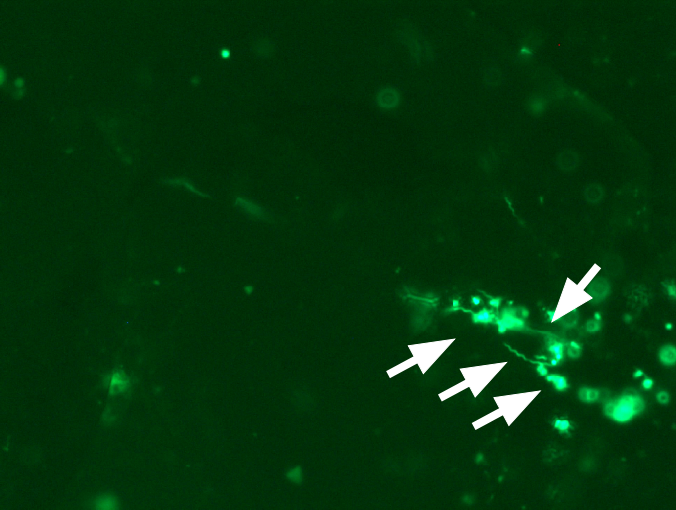


Supplemental Figure 2

A.



B.



Supplemental Figure legend.

Figure S1. Salivary glands visualized by dark field (**A**), fluorescence under the DAPI filter (**B**), and the images overlaid (**C**). The ducts autofluoresce and branch to the acini (**B** and **C**).

Figure S2. Evaluation of salivary gland acini after a transmission bloodmeal. An acinus was viewed with a 63x oil objective by dark field (**A**), fluorescence (**B**), and the images were overlaid (**C**). White arrows (**B**) point at fluorescing spirochetes and the scale bar is shown at the bottom left of each image.

Movie S1. Video of live *B. turicatae-gfp* in the blood after transmission by tick bite.

Movie S2. Video of live *B. turicatae-gfp* in the midgut of starved ticks.