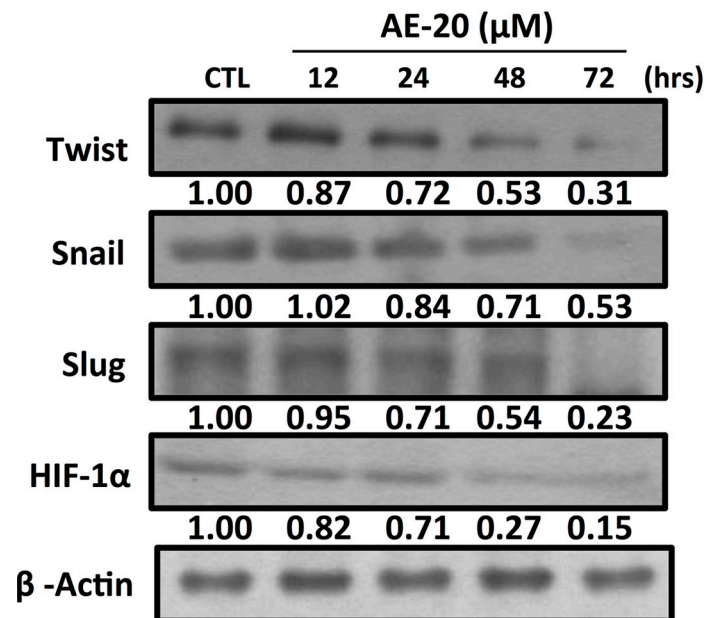


Aloe-emodin inhibits HER-2 expression through the downregulation of Y-box binding protein-1 in HER-2-overexpressing human breast cancer cells

Supplementary Materials



Supplementary Figure S1: SkBr3 cells treated with various times of Aloe-emodin (AE) 20 μM, the expression of transcription factor Twist, Snail, Slug, and HIF-1α were assayed by Western blotting. Values represent relative protein abundance. β-Actin was used as the loading control.