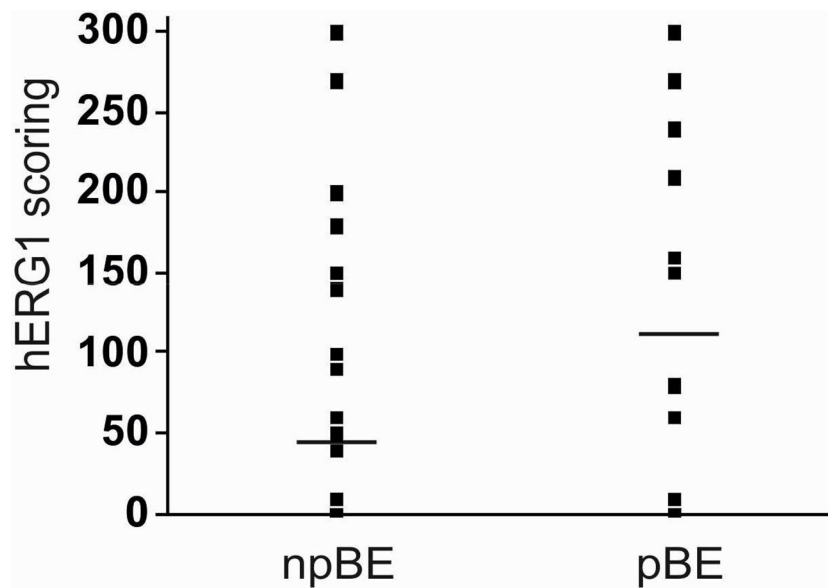
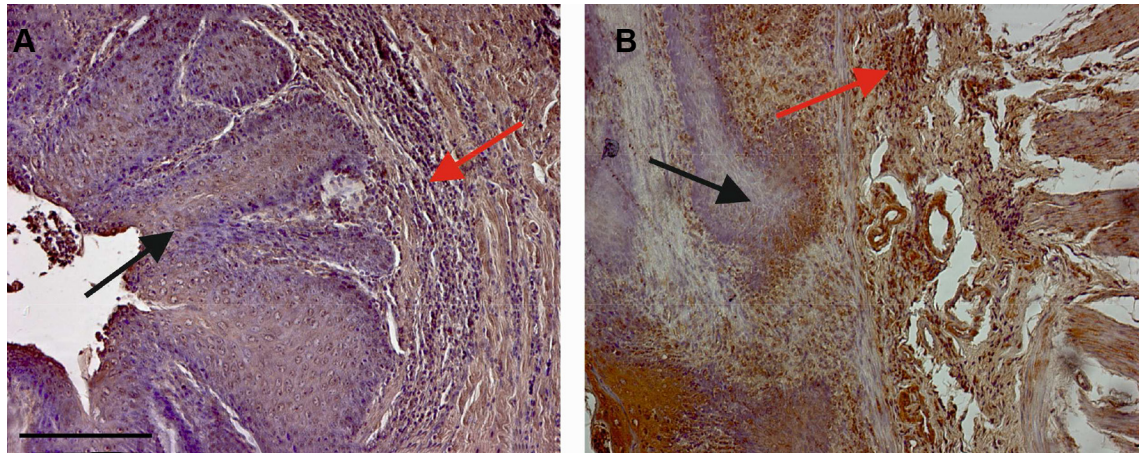


hERG1 behaves as biomarker of progression to adenocarcinoma in Barrett's esophagus and can be exploited for a novel endoscopic surveillance

Supplementary Materials



Supplementary Figure S1: Scatter Plot summarizing hERG1 scoring in the two different groups (npBE, pBE). Samples were scored as described in Materials and Methods. Each point represents a patient. Horizontal lines represent the mean value for hERG1 scoring in each group.



Supplementary Figure S2: Representative pictures of immunohistochemistry performed with anti-hERG1 polyclonal antibody (as described in Materials and Methods) showing that hERG1 protein is not expressed in normal esophageal tissue and in esophagitis. (A) “surgical model”; (B) “chemical model”. Original magnification 20×. Scale bar: 100 μm.

Supplementary Table S1: hERG1 scoring in 5 patient-matched pBE, ED and EA

	pBE			ED			EA		
	%	intensity	score	%	intensity	score	%	intensity	score
Pt1	10	1	10	80	3	240	90	3	270
Pt2	100	2	200	80	3	240	100	3	300
Pt3	90	3	270	90	3	270	100	3	300
Pt4	90	3	270	90	3	270	90	3	270
Pt5	0	0	0	0	0	0	0	0	0

Supplementary Table S2: Results of hERG1 expression on 26 pBE and ED/EA matched samples from patients included in the case-control study

	pBE		
	hERG1 –	hERG1 +	TOTAL
ED/EA	2	0	2
	4	20	24
TOTAL	6	20	26

hERG1 positivity: pBE = 76.9%, ED/EA = 92.3%; McNemar’s test, $P = 0.045$.