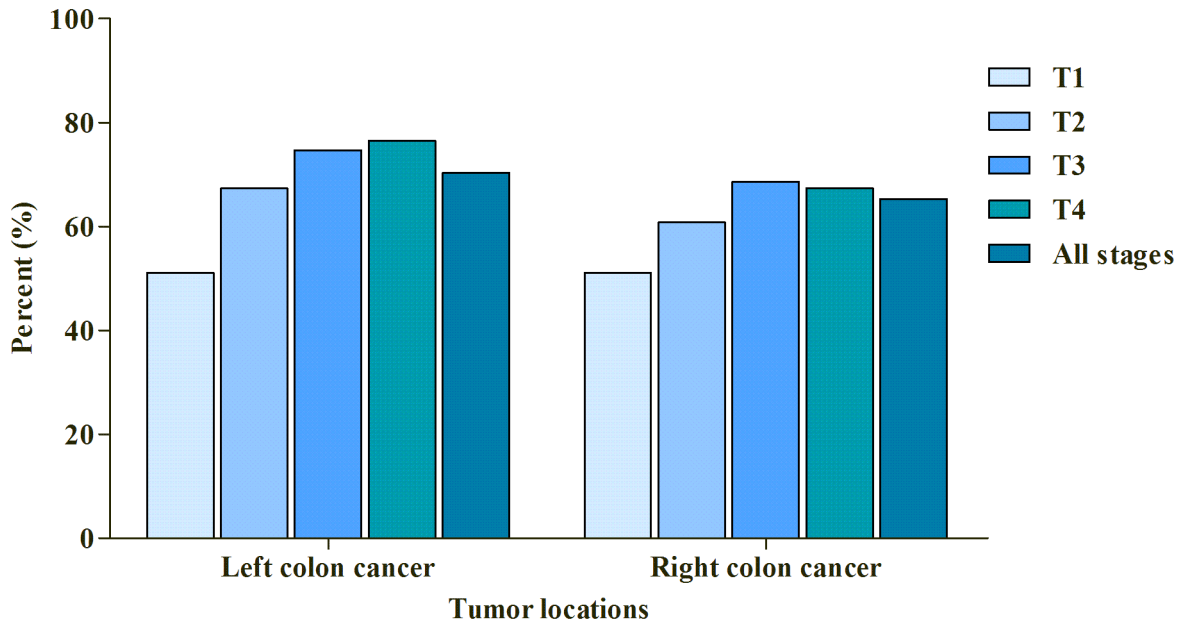


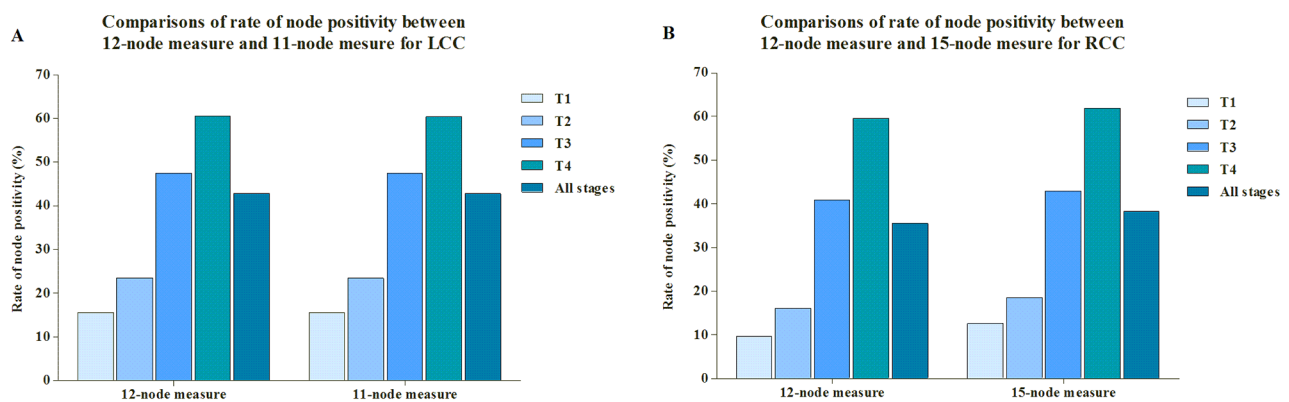
Whether regional lymph nodes evaluation should be equally required for both right and left colon cancer

SUPPLEMENTARY FIGURES AND TABLES

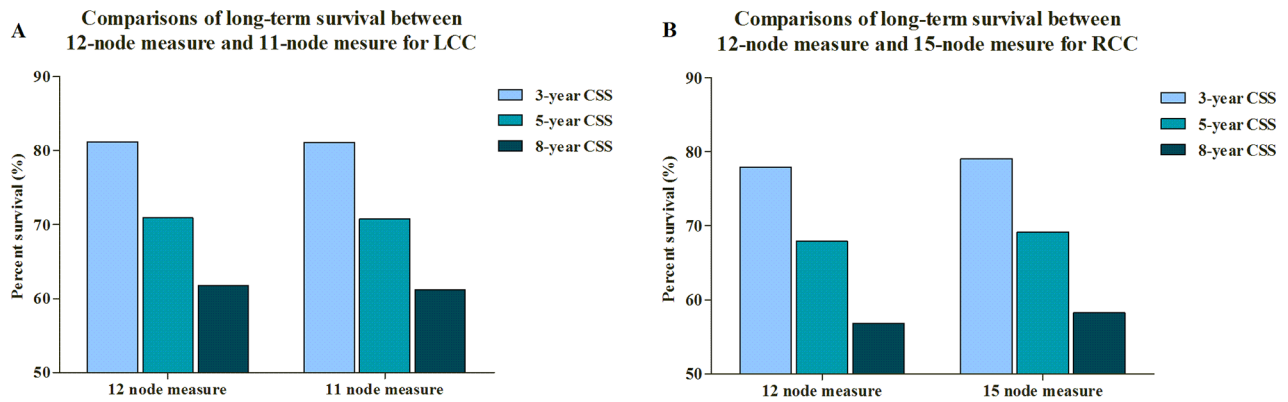
Comparisons of rates of node \geq new cutoff values (11 for LCC/15 for RCC) by tumor locations



Supplementary Figure S1: Comparison of rate of node \geq new cutoff values between RCC and LCC.



Supplementary Figure S2: A. The comparisons of rate of node positivity between 12-node measure and 11-node measure for LCC. B. The comparisons of rate of node positivity between 12-node measure and 15-node measure for RCC.



Supplementary Figure S3: A. The comparisons of long-term survivals between 12-node measure and 11-node measure for LCC. B. The comparisons of long-term survivals between 12-node measure and 15-node measure for RCC.

Supplementary Table S1: Relative odds of node positivity among RCC patients: multivariate logistic regression

Characteristic		OR [95% CI]	P
Node examined	<12	1	0.376
	≥12	0.979 [0.933-1.027]	
Gender	Female	1	0.640
	Male	0.991 [0.954-1.029]	
Age	20-59	1	<0.001
	≥60	0.735 [0.702-0.770]	
Race	White	1	<0.001
	Black	1.186 [1.119-1.258]	
	Others	1.128 [1.048-1.215]	
AJCC T Stage	T1	1	<0.001
	T2	1.415 [1.288-1.554]	
	T3	4.581 [4.229-4.963]	
	T4	8.721 [7.943-9.575]	
Histological type	Adenocarcinoma	1	0.008
	Mucous/signet-ring cell	1.070 [1.014-1.128]	
	Others	0.831 [0.679-1.019]	
Grade	Grade I/II	1	<0.001
	Grade III/IV	1.972 [1.887-2.060]	

Supplementary Table S2: Relative odds of node positivity among LCC patients: multivariate logistic regression

Characteristic		OR [95% CI]	P
Node examined	<12	1	0.111
	≥12	1.072 [0.984-1.167]	
Gender	Female	1	0.771
	Male	0.989 [0.915-1.068]	
Age	20-59	1	<0.001
	≥60	0.644 [0.594-0.699]	
Race	White	1	<0.001
	Black	1.207 [1.084-1.344]	
	Others	1.298 [1.139-1.479]	
AJCC T Stage	T1	1	<0.001
	T2	1.291 [1.086-1.534]	
	T3	3.426 [2.988-3.928]	
	T4	5.097 [4.299-6.043]	
Histological type	Adenocarcinoma	1	0.494
	Mucous/signet-ring cell	0.928 [0.808-1.067]	
	Others	0.830 [0.446-1.544]	
Grade	Grade I/II	1	<0.001
	Grade III/IV	1.910 [1.712-2.131]	

Supplementary Table S3: Univariate and multivariate analyses RCC patients

Characteristic	Univariate analysis		Multivariate analysis		
		HR [95% CI]	P	HR [95% CI]	P
Gender	Female	1	0.975		
	Male	0.999 [0.969-1.031]			
Age	20-59	1	<0.001	1	<0.001
	≥60	2.435 [2.316-2.561]		2.570 [2.443-2.704]	
Race	White	1	<0.001	1	<0.001
	Black	0.955 [0.909-1.002]		1.088 [1.036-1.142]	
	Others	0.697 [0.649-0.749]		0.709 [0.659-0.762]	
AJCC Stage	Stage I	1	<0.001	1	<0.001
	Stage II	1.436 [1.373-1.503]		1.480 [1.438-1.496]	
	Stage III	2.335 [2.235-2.440]		2.426 [2.279-2.649]	
AJCC T Stage	T1	1	<0.001	1	<0.001
	T2	1.241 [1.156-1.333]		1.226 [1.140-1.318]	
	T3	1.842 [1.734-1.957]		1.969 [1.775-2.185]	
	T4	3.451 [3.222-3.696]		3.394 [3.044-3.783]	
AJCC N Stage	N0	1	<0.001	1	<0.001
	N1/2	1.848 [1.792-1.907]		1.264 [1.102-1.450]	
Histological type	Adenocarcinoma	1	<0.001	1	<0.001
	Mucous/signet-ring cell	1.156 [1.109-1.206]		1.048 [1.004-1.093]	
	Others	1.917 [1.592-2.309]		1.375 [1.181-1.600]	
Grade	Grade I/II	1	<0.001	1	<0.001
	Grade III/IV	1.496 [1.446-1.549]		1.229 [1.186-1.274]	
Node examined	<12	1	<0.001	1	0.001
	≥12	0.718 [0.694-0.743]		0.692 [0.668-0.717]	

Supplementary Table S4: Univariate and multivariate analyses for LCC patients

Characteristic	Univariate analysis		Multivariate analysis		
		HR [95% CI]	P	HR [95% CI]	P
Gender	Female	1	0.121		
	Male	1.057 [0.986-1.133]			
Age	20-59	1	<0.001	1	<0.001
	≥60	2.413 [2.209-2.637]		2.557 [2.338-2.796]	
Race	White	1	<0.001	1	<0.001
	Black	1.124 [1.023-1.235]		1.231 [1.120-1.354]	
	Others	0.738 [0.644-0.846]		0.745 [0.650-0.855]	
AJCC Stage	Stage I	1	<0.001	1	<0.001
	Stage II	1.644 [1.477-1.829]		1.779 [1.626-1.976]	
	Stage III	2.246 [2.025-2.491]		2.001 [1.730-2.350]	
AJCC T Stage	T1	1	<0.001	1	<0.001
	T2	1.430 [1.212-1.686]		1.458 [1.230-1.728]	
	T3	2.113 [1.851-2.412]		2.467 [1.952-3.119]	
	T4	4.041 [3.477-4.697]		4.579 [3.585-5.848]	
AJCC N Stage	N0	1	<0.001	1	0.133
	N1/2	1.579 [1.473-1.693]		1.199 [0.946-1.519]	
Histological type	Adenocarcinoma	1	<0.001	1	0.354
	Mucous/signet-ring cell	1.292 [1.152-1.448]		1.089 [0.970-1.222]	
	Others	1.119 [0.674-1.858]		1.006 [0.604-1.677]	
Grade	Grade I/II	1	<0.001	1	<0.001
	Grade III/IV	1.541 [1.410-1.685]		1.328 [1.213-1.455]	
Node examined	<12	1	<0.001	1	<0.001
	≥12	0.813 [0.757-0.872]		0.737 [0.686-0.793]	