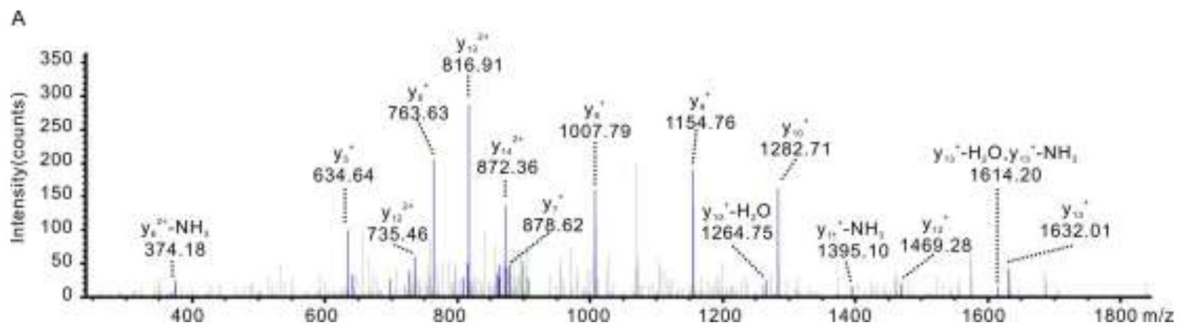
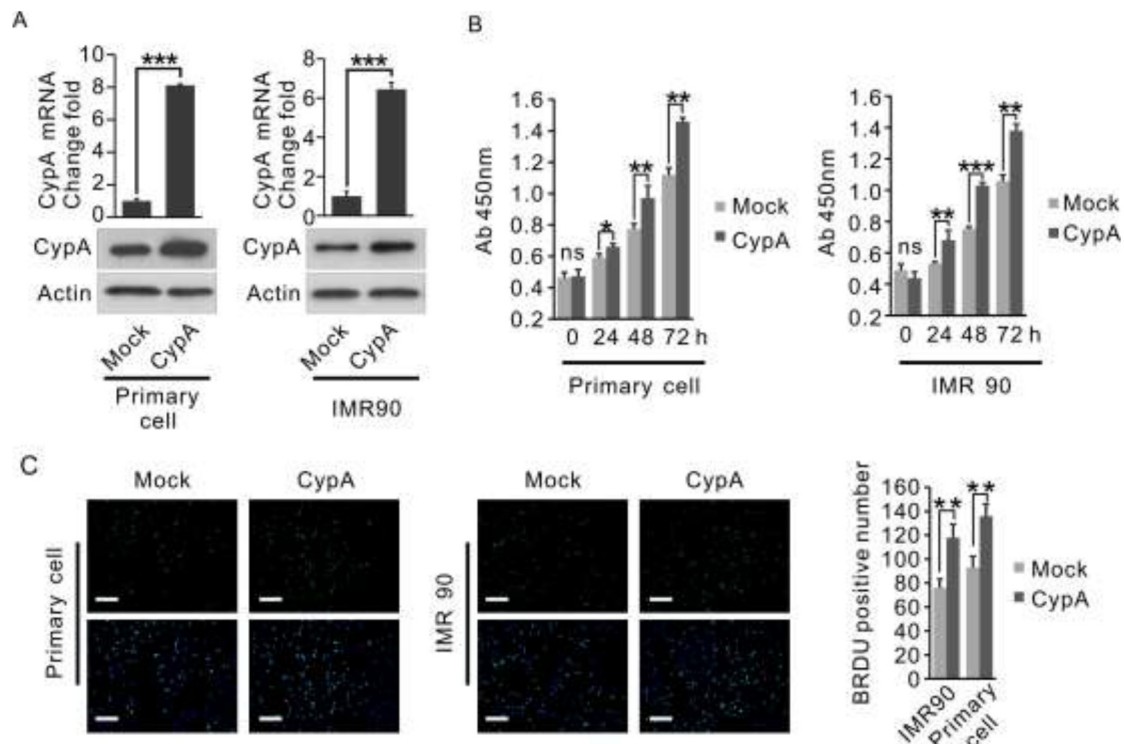


Proteomic identification of cyclophilin A as a potential biomarker and therapeutic target in oral submucous fibrosis

SUPPLEMENTARY FIGURES



Supplementary Figure S1: Representative MS/MS data of CypA. MS/MS results corresponding to the CypA-derived peptide SIYGEKFEDE.



Supplementary Figure S2: Overexpression of CypA promotes fibroblast proliferation. A. IMR90 and primary oral fibroblast were transfected with transfected mock or CypA expression vector. Expression of CypA was examined by Q-PCR and western blot. B. IMR90 and primary oral fibroblast were transfected with transfected mock or CypA expression vector. Proliferation of IMR90 and primary oral fibroblast cells was examined by CCK8 assay. C. IMR90 and primary oral fibroblast were transfected with transfected mock or CypA expression vector. Proliferation of IMR90 and primary oral fibroblast cells was examined by BrdU assay. T-test, $p < 0.001$ ***, $p < 0.01$ **, $p < 0.05$ *.