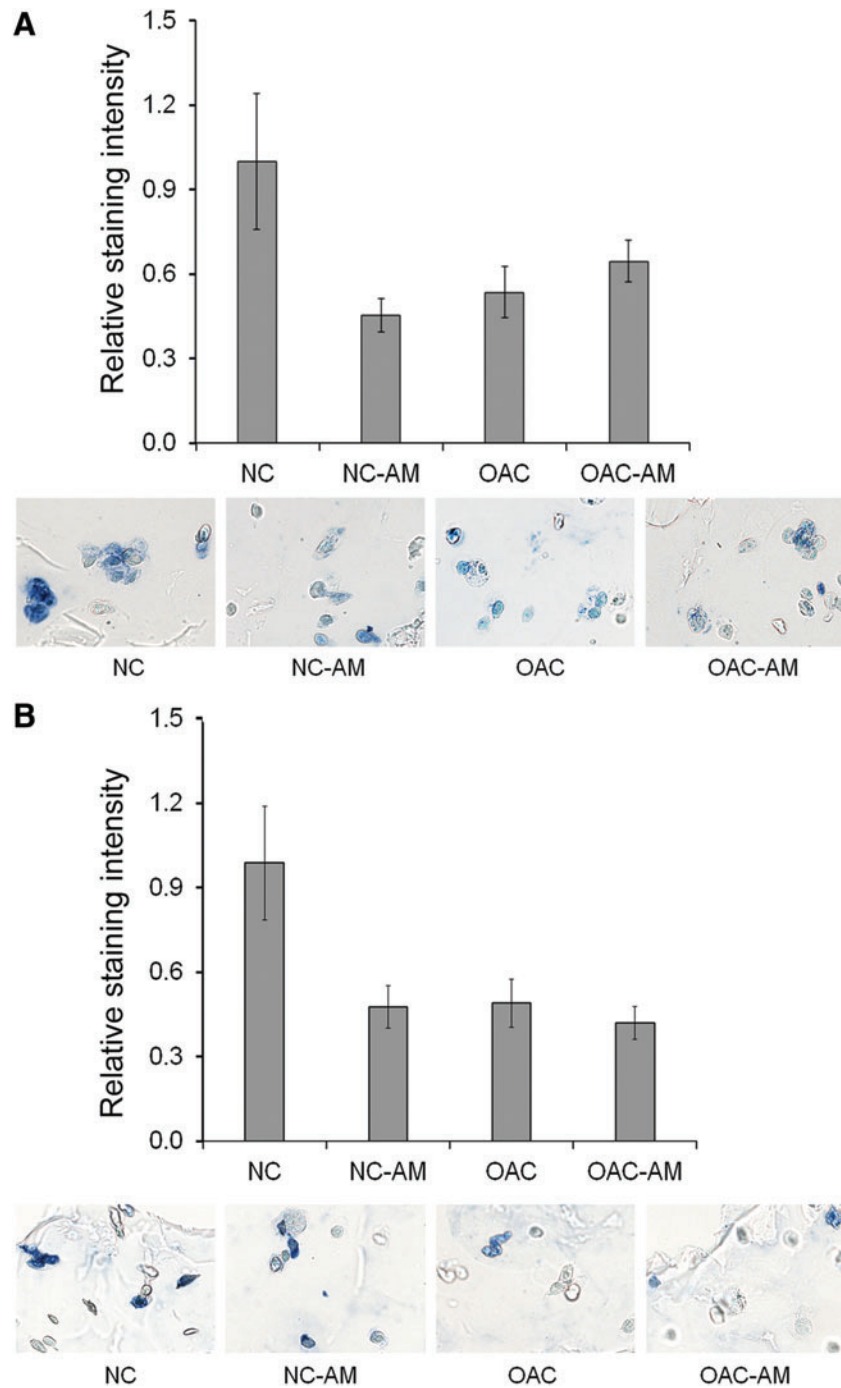
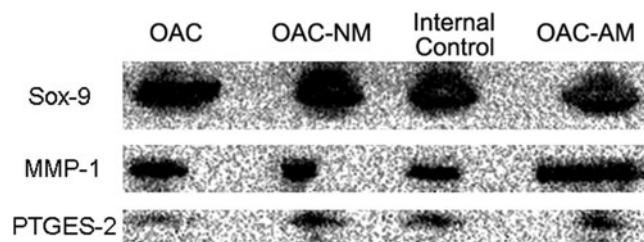


SUPPLEMENTARY FIG. S4. Representative western blot staining for Sox-9, MMP-1, and PTGES-2 for NCs in mono-culture or in coculture with AMs. Equal levels of DNA were loaded into each well of the SDS-PAGE gel for each sample. An internal control known to stain positively for each marker assayed was included for the purpose of confirming assay quality. SDS-PAGE, sodium dodecyl sulfate polyacrylamide gel electrophoresis.



SUPPLEMENTARY FIG. S5. (A) Semi-quantitative assessment of Col-2 immunostaining of transverse hydrogel sections of the NC mono-culture, NC-AM, OAC mono-culture, and OAC-AM groups. Representative images of Col-2 immunostaining are shown for each group, with *blue* coloration indicating positive staining. (B) Semi-quantitative assessment of aggrecan immunostaining of transverse hydrogel sections of the NC mono-culture, NC-AM, OAC mono-culture, and OAC-AM groups. Representative images of aggrecan immunostaining are shown for each group, with *blue* coloration indicating positive staining. Semi-quantitative immunohistochemical assessment was performed as per Materials and Methods section.



SUPPLEMENTARY FIG. S6. Representative western blot staining for Sox-9, MMP-1, and PTGES-2 for OACs in mono-culture, in coculture with AMs, or in coculture with NMs. Equal levels of DNA were loaded into each well of the SDS-PAGE gel for each sample. An internal control known to stain positively for each marker assayed was included for the purpose of confirming assay quality.