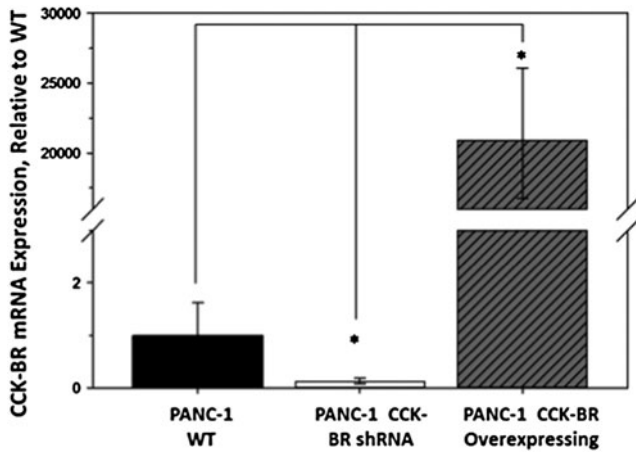


## Supplementary Data



**SUPPLEMENTARY FIG. S1.** Quantification of *CCKBR* mRNA in PANC-1 clonal cell lines. Total RNA was isolated from PANC-1 wild-type cells (*solid bar*), PANC-1 cells where the *CCKBR* has been knocked down by stable shRNA transfection (*open bar*), and PANC-1 cells that overexpress *CCKBR* (*hatched bar*) and quantitated by qRT-PCR. Levels of *CCKBR* mRNA are expressed relative to WT PANC-1, and error bars represent the standard error of the mean of three independent RNA isolates. Student's *t*-tests determined that the amount of *CCKBR* mRNA was significantly different among all three lines ( $*P < 0.001$ ). *CCKBR*, cholecystokinin B receptor.