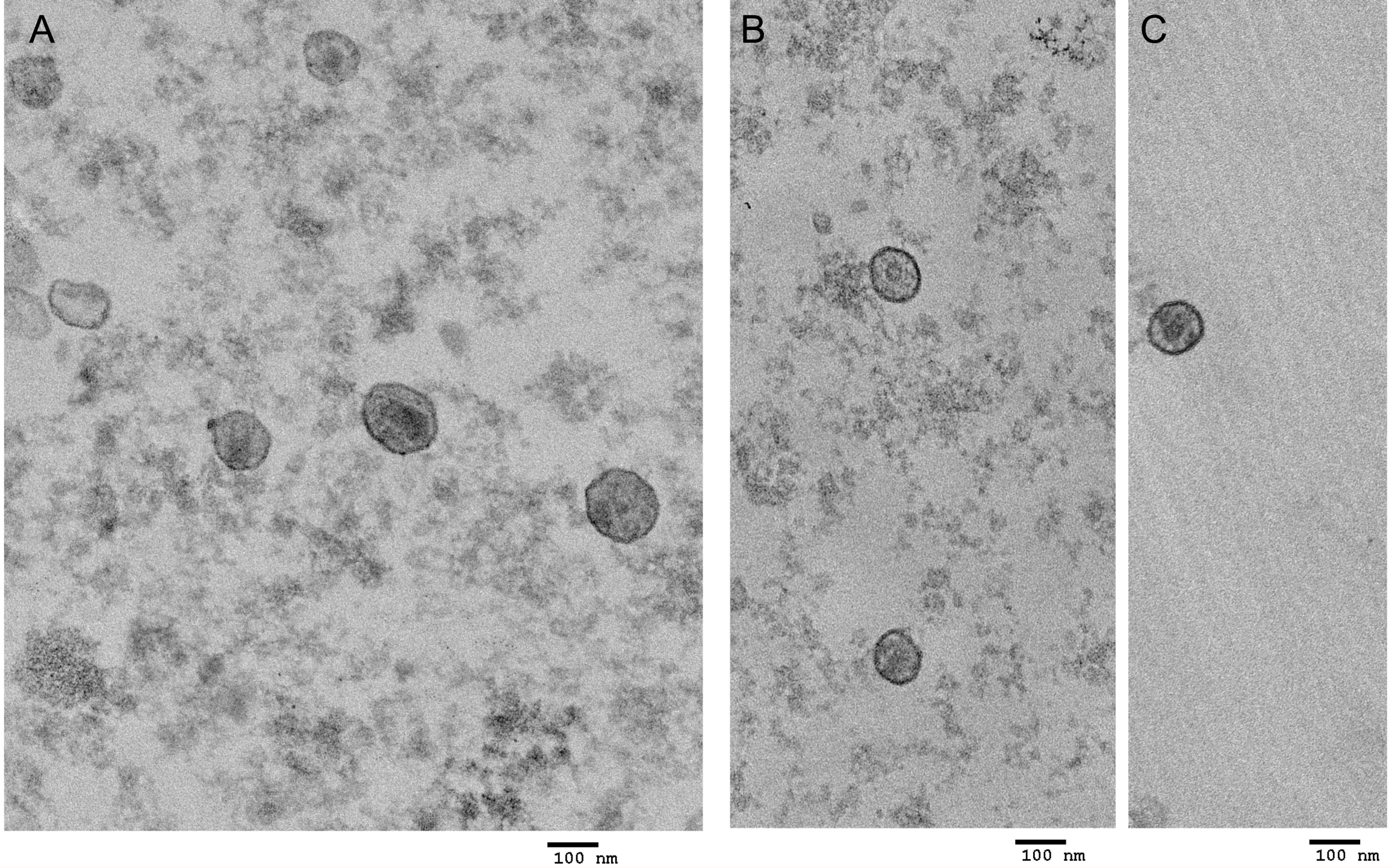
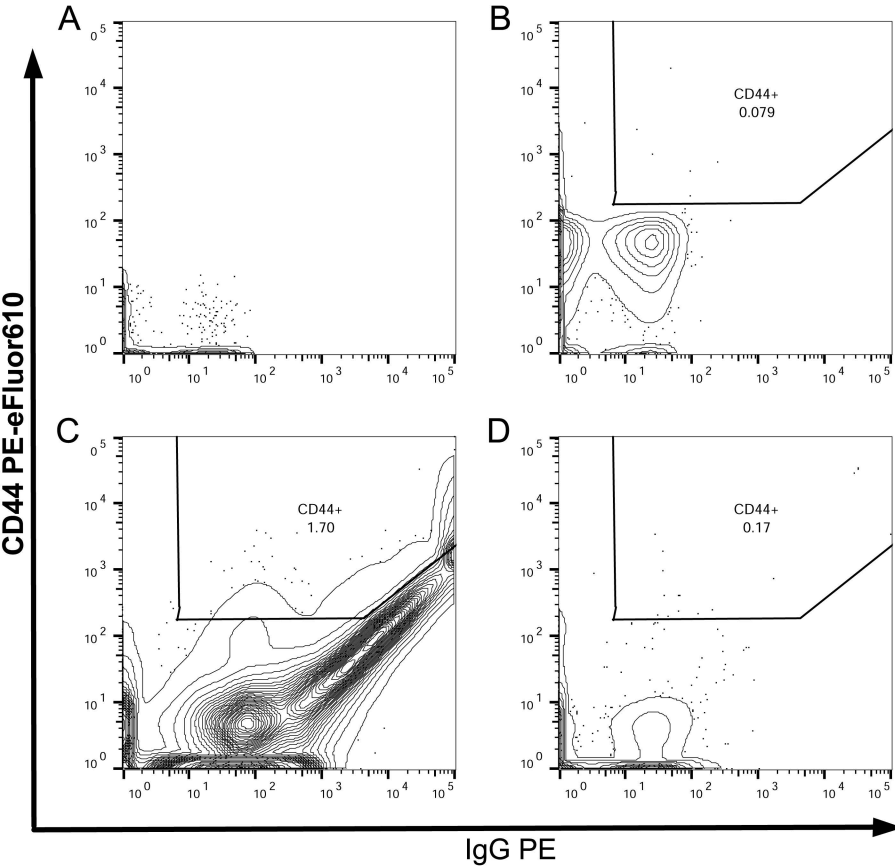


Supplementary Figure 1. CD26 and CD36 staining of uninfected H9 and THP-1 cellular supernatant. THP-1 cell supernatant was stained with A) IgG1k FITC isotype and B) anti-CD36 FITC. H9 cell supernatant was stained with C) IgG1k PE isotype and D) anti-CD26 PE. Staining and acquisition was performed as in Fig. 1.



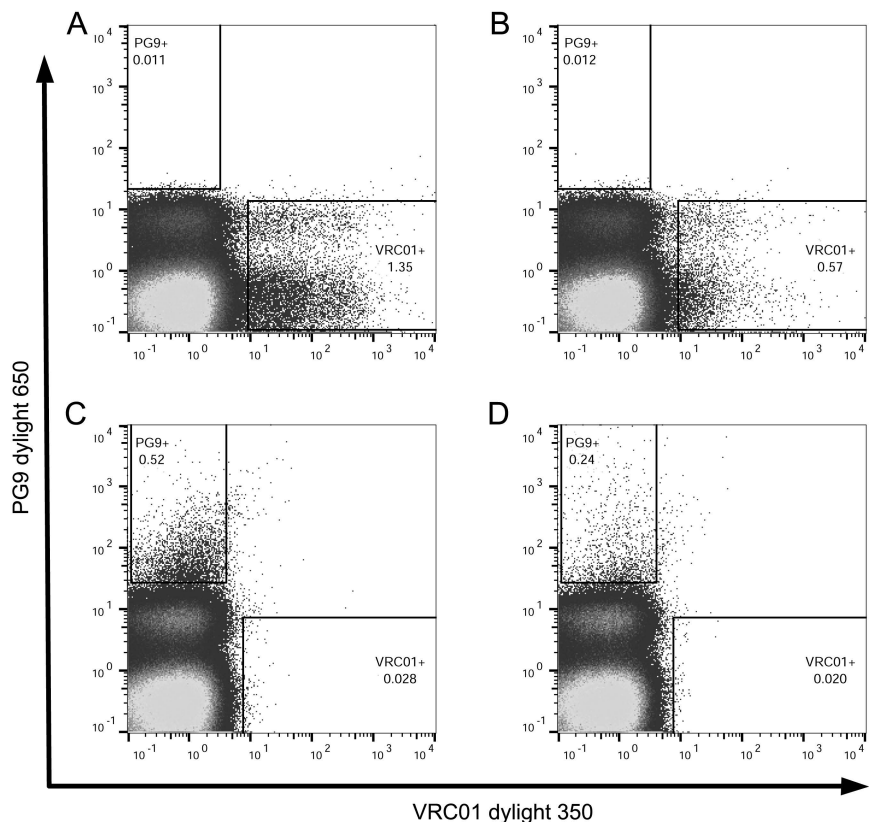
Supplementary Figure 2. Electron micrographs of pre and post sort 293T derived HIV-1 Bal.

HIV-1 Bal was generated in 293T cells and stained with PKH26 dye. HIV-1 Bal was fixed with 2% glutaraldehyde and analyzed by electron microscopy in A. This PKH26 stained Bal was then sorted using the same methods described for Figure 1, fixed, and analyzed by electron microscopy in B & C. Panels B and C represent different sections from the same experiment.



Supplementary Figure 3. Uninfected rhesus macaque plasma stained and sorted for CD44 shows no bound IgG .

A) Unstained uninfected serum has no autofluorescence. B) Uninfected serum stained with anti-CD44 sorted for CD44+ vesicles. C) CD44+ virus sorted from serum stained with isotype control and D) anti-rhesus IgG.



Supplementary Figure 4. HIV-1 virus sorted from infected human plasma using two broadly neutralizing antibodies and isotype controls.

A) Infected human plasma stained with VRC01 and B) Human IgG1-dylight 350 isotype. C) Infected plasma stained with PG9 and D) Human IgG1-dylight 650 isotype. This figure represents one of 3 separate experiments.