

TITLE: SMAD3 regulates follicle-stimulating hormone synthesis by pituitary gonadotrope cells *in vivo*

AUTHORS: Yining Li¹, Gauthier Schang¹, Ulrich Boehm², Chu-Xia Deng³, Jonathan Graff⁴, and Daniel J. Bernard¹

FIGURE LEGENDS:

FIGURE S1. 10-week-old control and cKO mice have comparable body weights. A) Body weight (in g) of 10-week-old control and cKO males (n=13 or 11). B) Body weights of 10-week-old control and cKO females (n=13 or 12).

FIGURE S2. Serum testosterone levels do not differ significantly between 10-week-old control and cKO males.

FIGURE S3. Gene expression in primary pituitary cells. A,B) *Lhb*, C,D) *Cga*, and E,F) *Gnrhr* mRNA levels in primary pituitary cell cultures from female (left column) and male (right column) control and cKO mice. Bars represent mean (+ SEM) from 3 independent experiments. Bars with different symbols (\$) and (¢) differ significantly. The *Fshb* data from the same cultures are presented in Fig. 10.

Figure S1

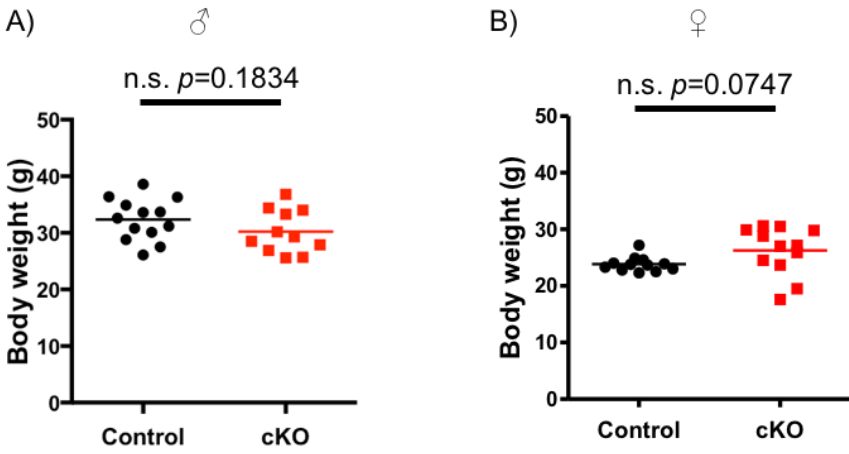


Figure S2

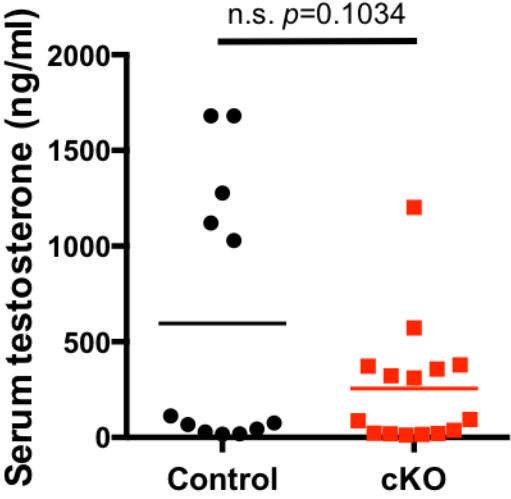


Figure S3

