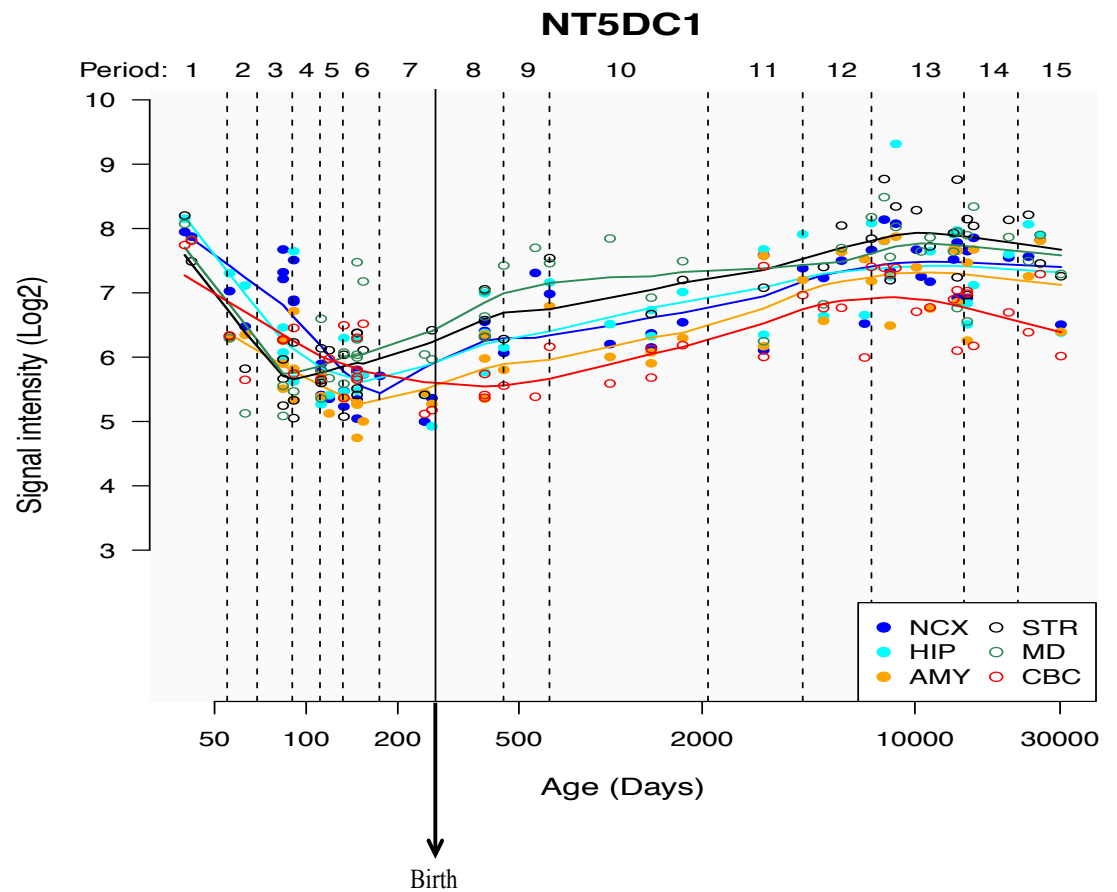


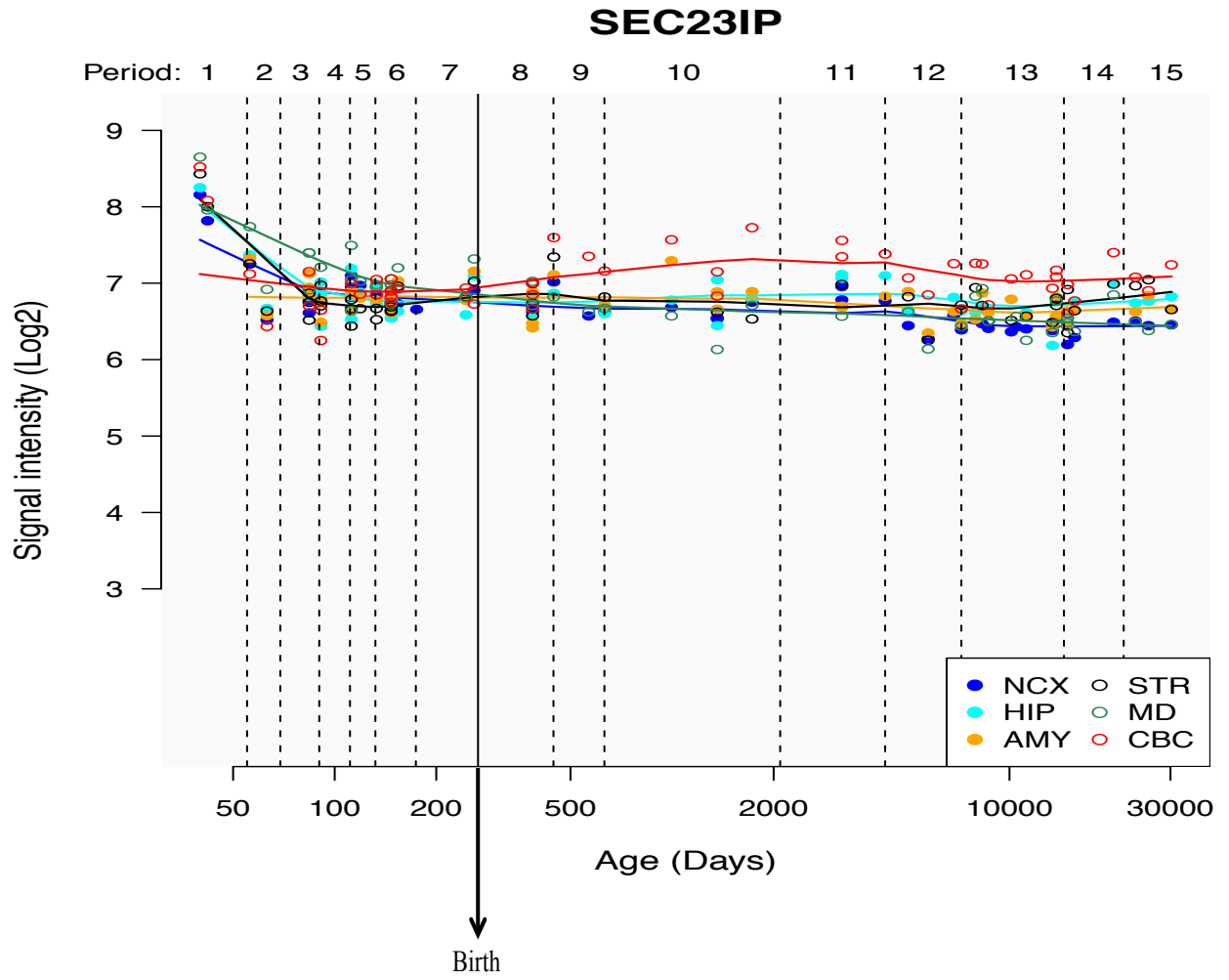
Supplementary Figure 6. Differential expression of the study-wide significant loci in the human brain across the lifetime.

Developmental age is shown on the x axes, in days. Brain regions are abbreviated as follows: NCX, neocortex; STR, striatum; HIP, hippocampus; MD, mediodorsal nucleus of the thalamus; AMY, amygdala; CBC, cerebellar cortex.

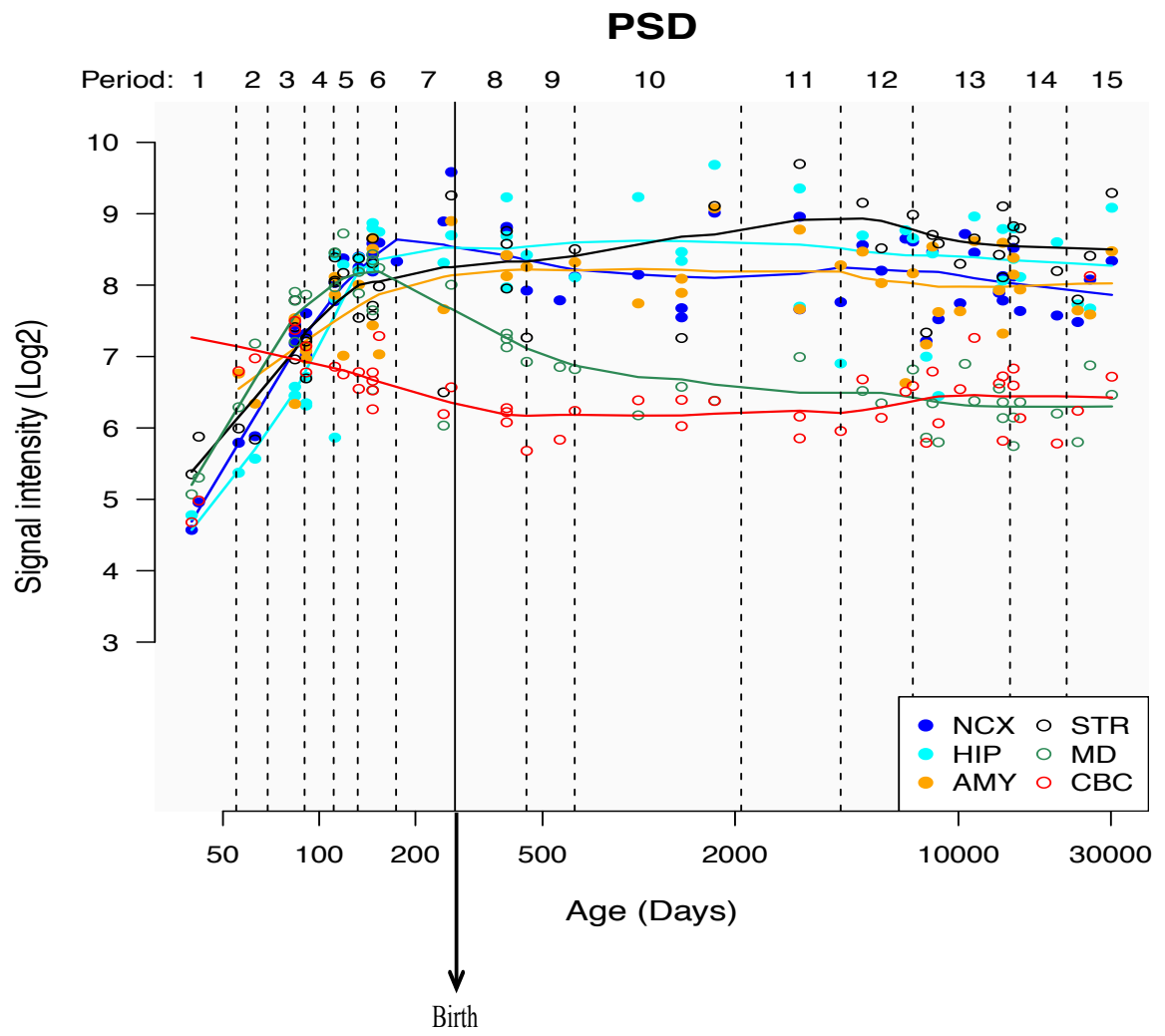
A) NT5DC1



B) SEC23IP



C) PSD



D) ZCCHC4

