

Tremelimumab in combination with ablation in patients with advanced hepatocellular carcinoma

Austin G. Duffy, Susanna V. Ulahannan, Oxana Makorova-Rusher, Osama Rahma,
Heiner Wedemeyer, Drew Pratt, Jeremy L. Davis, Marybeth S. Hughes, Theo Heller,
Mei ElGindi, Ashish Uppala, Firouzeh Korangy, David E. Kleiner, William D. Figg, David
Venzon, Seth M. Steinberg, Aradhana M. Venkatesan, Venkatesh Krishnasamy, Nadine
Abi-Jaoudeh, Elliot Levy, Brad J. Wood, Tim F. Greten

Table of contents

List of investigators.....	2
Supplementary Fig. 1.....	3
Supplementary Fig. 2.....	4
Supplementary Fig. 3.....	5
Supplementary Fig. 4.....	6
Supplementary Table 1.....	7

List of investigators

Austin G. Duffy¹, Susanna V. Ulahannan¹, Oxana Makorova-Rusher¹, Osama Rahma¹, Heiner Wedemeyer², Drew Pratt³, Jeremy L. Davis⁴, Marybeth S. Hughes⁴, Theo Heller⁵, Mei ElGindi¹, Ashish Uppala,¹ Firouzeh Korangy¹, David E. Kleiner³, William D. Figg⁶, David Venzon⁷, Seth M. Steinberg⁷, Aradhana M. Venkatesan⁸, Venkatesh Krishnasamy⁸, Nadine Abi-Jaoudeh⁸, Elliot Levy⁸, Brad J. Wood⁸, Tim F. Greten¹.

1 Gastrointestinal Malignancies Section, Thoracic and GI Oncology Branch, Center for Cancer Research, National Cancer Institute, National Institutes of Health.

2 Department of Gastroenterology, Hepatology and Endocrinology, Hannover Medical School.

3 Laboratory of Pathology, Center for Cancer Research, National Cancer Institute, National Institutes of Health.

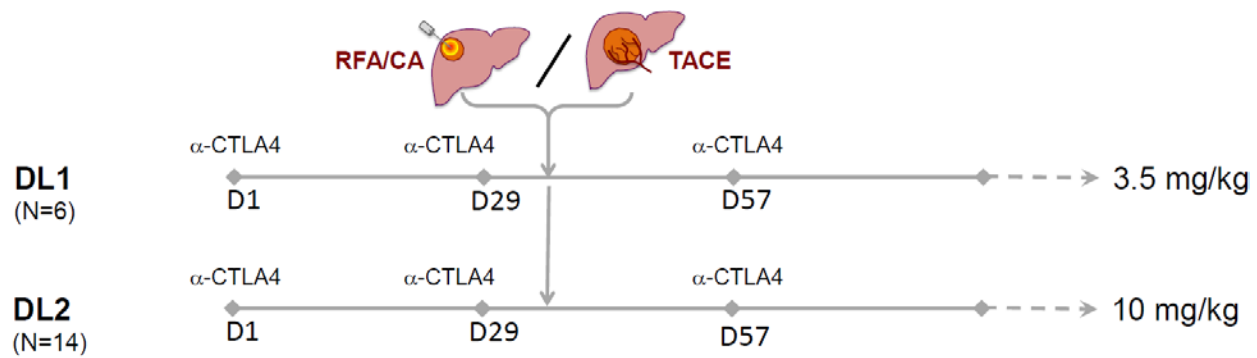
4 Thoracic and GI Oncology Branch, Center for Cancer Research, National Cancer Institute, National Institutes of Health.

5 Translational Hepatology Unit, Liver Diseases Branch (LDB), National Institute of Diabetes and Digestive and Kidney Disease (NIDDK) National Institutes of Health.

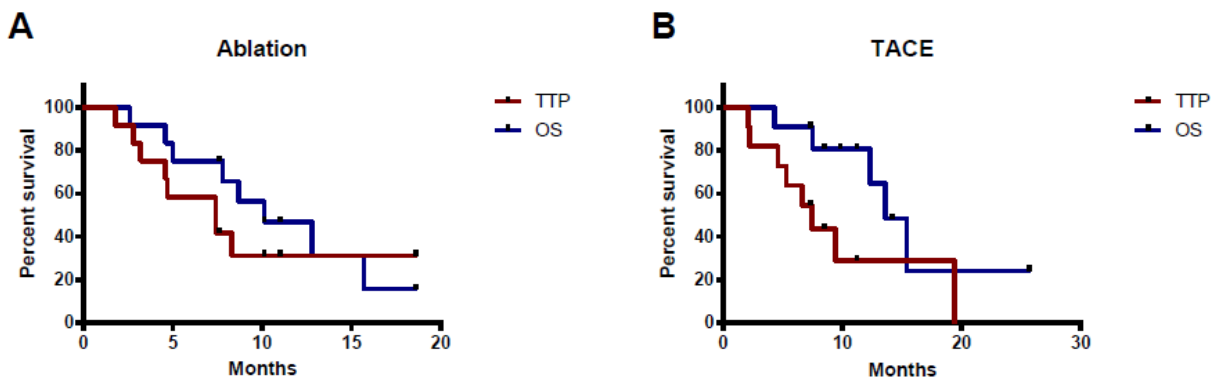
6 Clinical Pharmacology Program, Center for Cancer Research, National Cancer Institute, National Institutes of Health

7 Biostatistics and Data Management Section, Center for Cancer Research, National Cancer Institute, National Institutes of Health

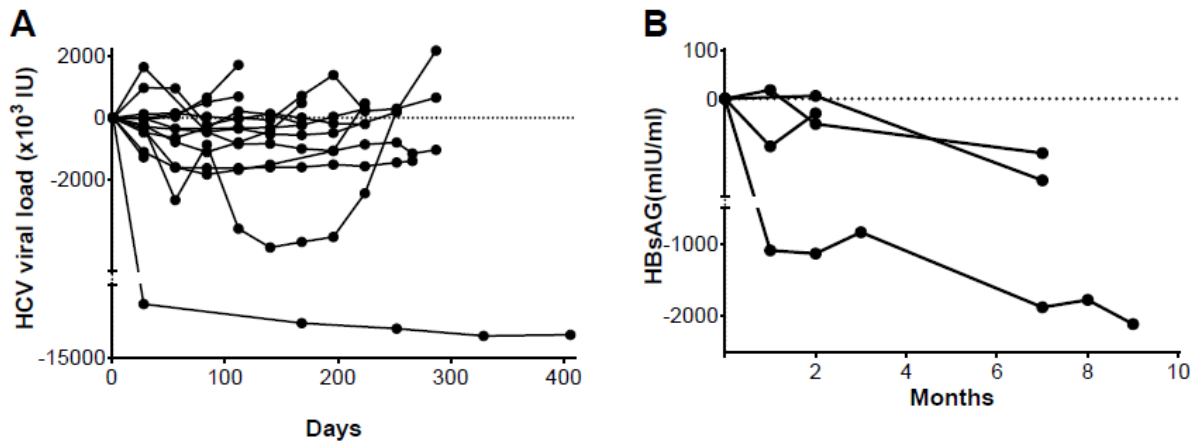
8 Center for Interventional Oncology, Radiology and Imaging Sciences and Center for Cancer Research, National Institutes of Health



Supplementary Fig 1: Study schema showing timing of study interventions.

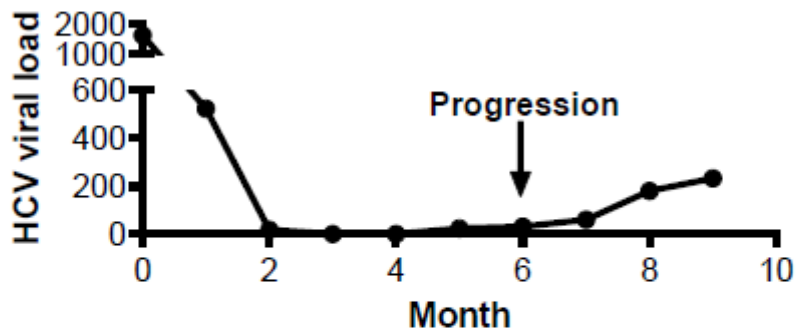


Supplementary Fig 2: Kaplan Meier curves showing (A) TTP and OS for patients who underwent ablation and (B) TTP and OS for patients who underwent TACE .

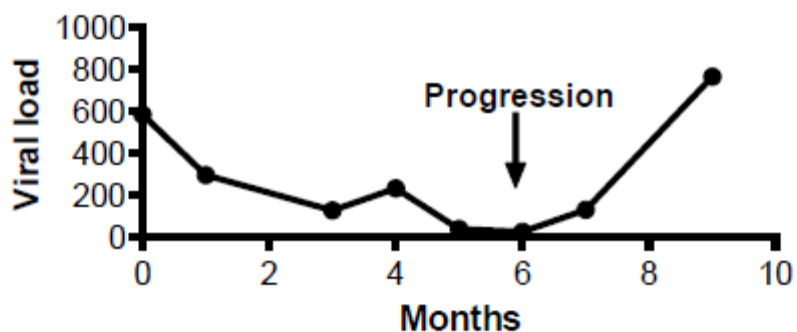


Supplementary Fig 3: (A) Relative changes in HCV viral load (iu/ml) over time for all evaluable patients; (B) Quantitative hepatitis B surface antigen for N=4 patients with hepatitis B.

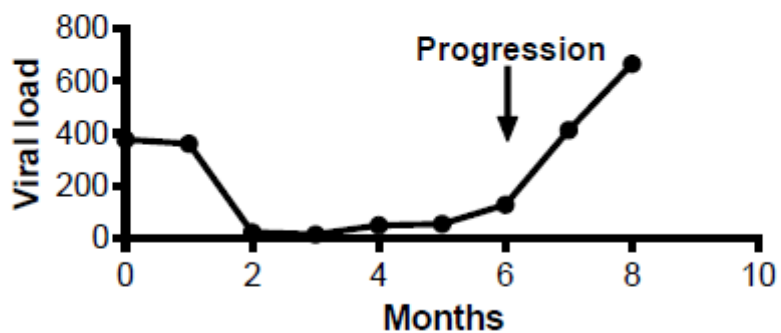
Patient A



Patient B



Patient C



Supplementary Figure 4:
Supplementary Figure 4

Data for N=3 patients demonstrating reduction in HCV viral load had a subsequent increase in VL which coincided with disease progression

Supplementary Table 1

Study pt no.	Prior therapies	Description of disease burden	IR intervention	Measureable lesions <u>not</u> subject to ablation/TACE			
				Baseline	After 2 months	After 4 months	After 6 months
3	Partial hepatectomy x2; TACEx3; Radioembolization; GEMOX, FOLFOX, Avastin + erlotinib	5 measurable lesions, all intrahepatic	<u>Complete</u> RFA to one lesion only	L1: 5cm L2: 2.2cm L3: 1.8cm L4: 2.9cm Sum: 11.9cm	L1: 5.9cm L2: 2.6cm L3: 2.3cm L4: 5.3cm Sum: 16.1cm	L1: 5cm L2: 1.6cm L3: 0.8cm L4: 2.5cm Sum: 9.9cm	L1: 3.5cm L2: 1cm L3: 0.6cm L4: 2cm Sum: 7.1cm
8	TACEx2; Brivanib; RT to liver	3 measurable lesions, all intrahepatic	<u>Complete</u> RFA to one lesion only; Other 2 lesions followed for RECIST	L1: 1.8 cm L2: 1.4cm Sum: 3.2cm	L1: 1cm L2: 0.7cm Sum: 1.7cm	L1: 0.8cm L2: 0.4cm Sum: 1.2cm	L1: 0.7cm L2: 0 Sum: 0.7cm
10	TACEx3	One measurable lesion, all intrahepatic. Multiple lesions visible on arteriography	<u>Complete</u> TACE (to small lesion not visible on CT scan)	L1: 10.2cm	L1: 6.5cm	L1: 4.8cm	L1: 4.8cm
17	RFA x 2	4 measurable lesions, all intrahepatic	<u>Complete</u> TACE to RT liver; x1 lesion in Lt lobe followed for RECIST (and not treated with TACE given shrinkage)	L1: 3.6 cm	L1: 2.2cm	L1: 1.8cm	L1: 1.6cm
25	TACE x 4	1 measurable lesion in Left lobe of liver, with diffuse mass and tumor infiltration centrally	Cryoablation to central tumor area <u>ie incomplete</u>	L1: 4 cm	L1: 3.2cm	L1: 3 cm	L1: 2.5cm

Data describing the measurable lesions in N=5 responding patients.