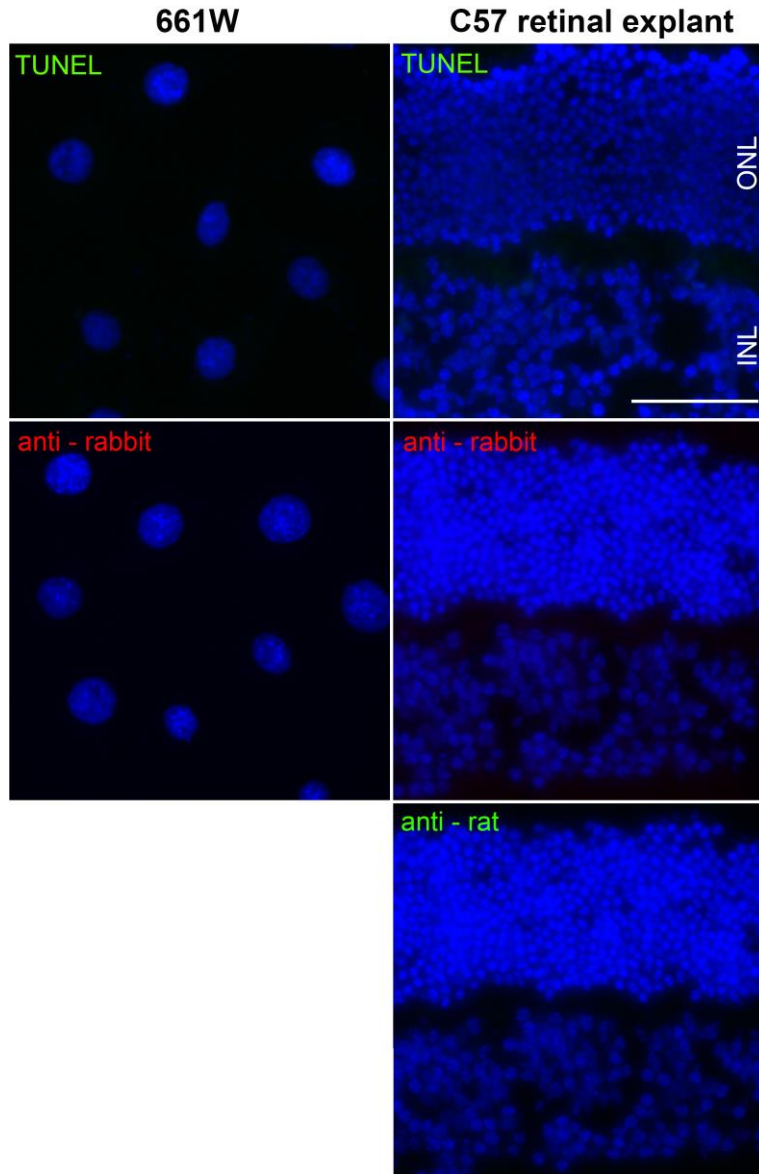


Supplementary Files

**Fractalkine-CX3CR1 signaling is critical for progesterone-mediated
neuroprotection in the retina**

Sarah L Roche¹, Alice C Wyse-Jackson¹, Ana M Ruiz-Lopez¹, Ashleigh M Byrne¹ and Thomas G
Cotter^{1*}

Negative Controls



Supplementary Figure S1. Example images of negative controls for TUNEL (elimination of TdT enzyme) and immunofluorescence (elimination of secondary antibody) in 661W cells and C57 retinal explants. Scale bar 50 μ m.