

**Proteomic analysis of exported chaperone/co-chaperone complexes of *P. falciparum* reveals an array of complex protein-protein interactions.**

Qi Zhang, Cheng Ma, Alexander Oberli, Astrid Zinz, Sonja Engels and Jude M Przyborski\*

**Legends to Supplementary Material**

**Supplementary Table S1. Proteins identified by crosslink followed by co-IP using either anti-GFP or anti-PfHsp70x.** ID, PlasmoDB accession number; UP, unique peptides; PC, peptide coverage. Localization based on literature or Apiloc predictions.

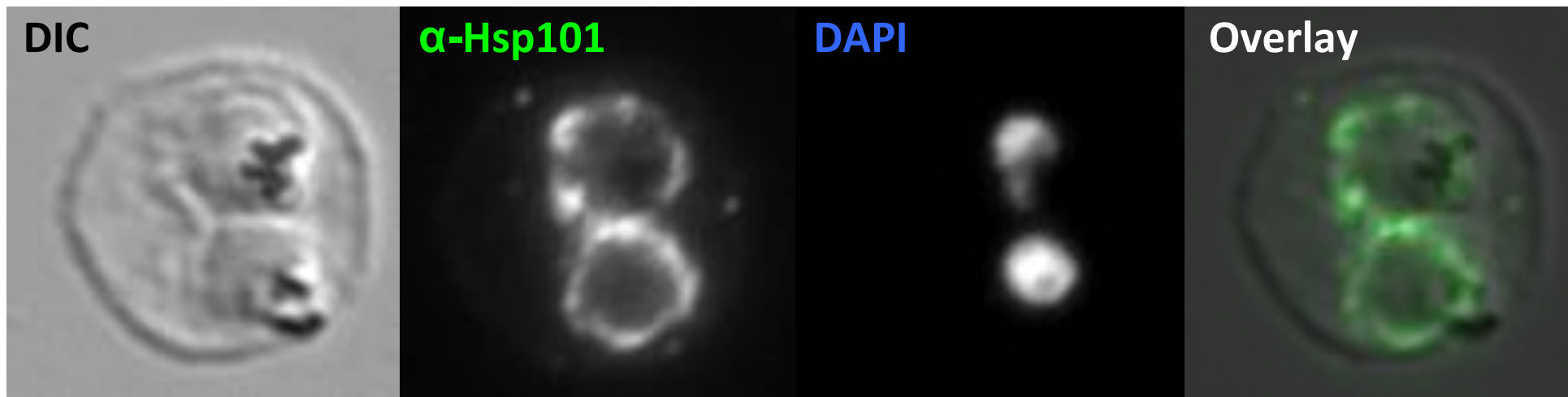
**Supplementary Table S2. Human proteins identified by crosslink followed by co-IP using either anti-GFP or anti-PfHsp70x.** ID, Uniprot accession number; UP, unique peptides; PC, peptide coverage.

**Supplementary Movie S3. Live cell imaging of GEXP18<sup>GFP</sup> cell line.** Highly mobile fluorescent foci can be observed within the infected erythrocyte.

**Supplementary Figure S4. PfHsp101 localizes only to a “ring” surrounding the parasite, suggestive of a PV localization.** DIC, differential interference contrast.

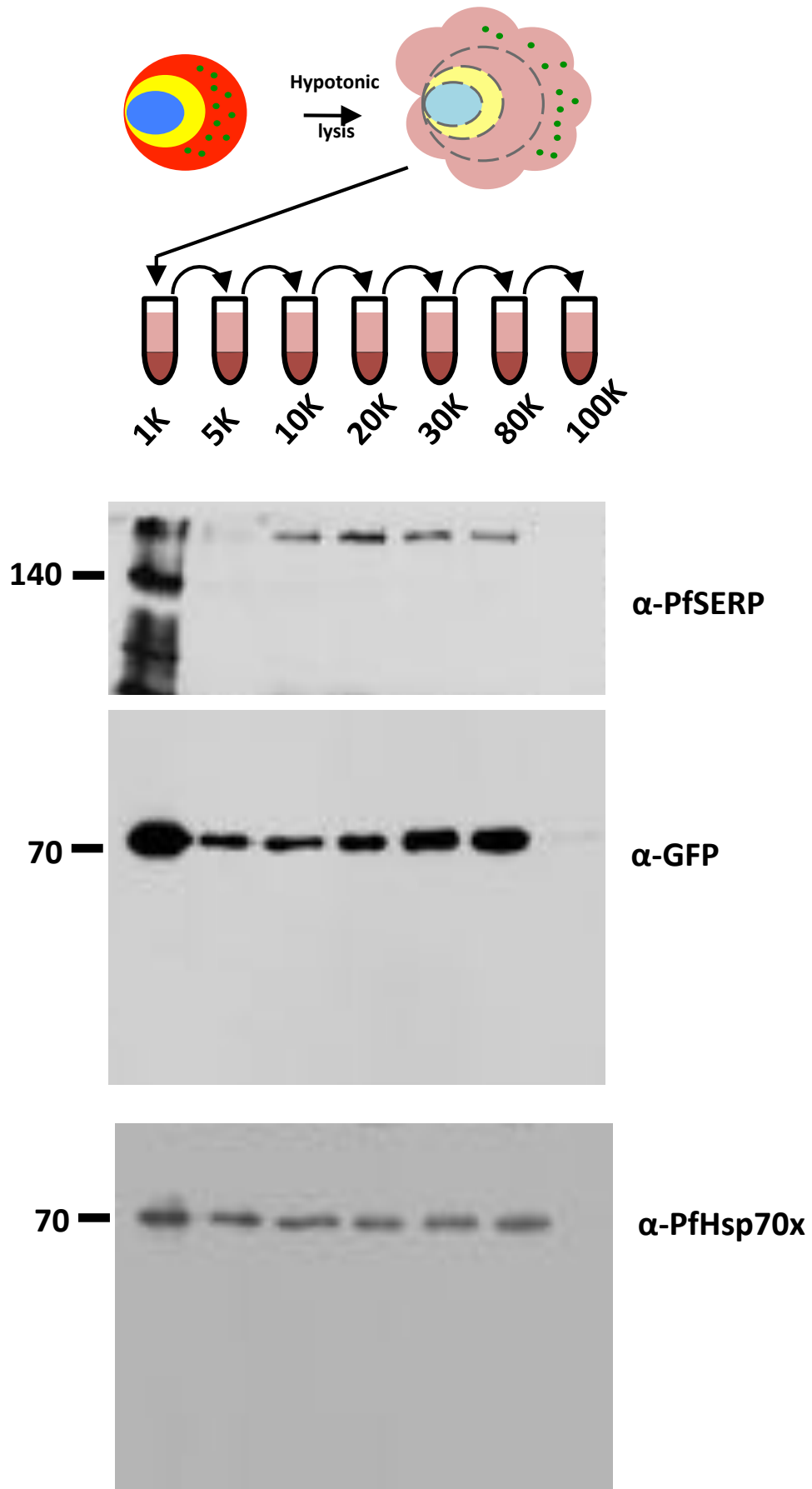
**Supplementary Table S5. Total proteins detected following SLO permeabilisation, proteinase K treatment and co-IP using anti-PfHsp70x.** ID, PlasmoDB accession number; UP, unique peptides; PC, peptide coverage.

**Supplementary File S6. Full-length blots used to generate figures 1, 2, 3, 4, 6 and 7.**

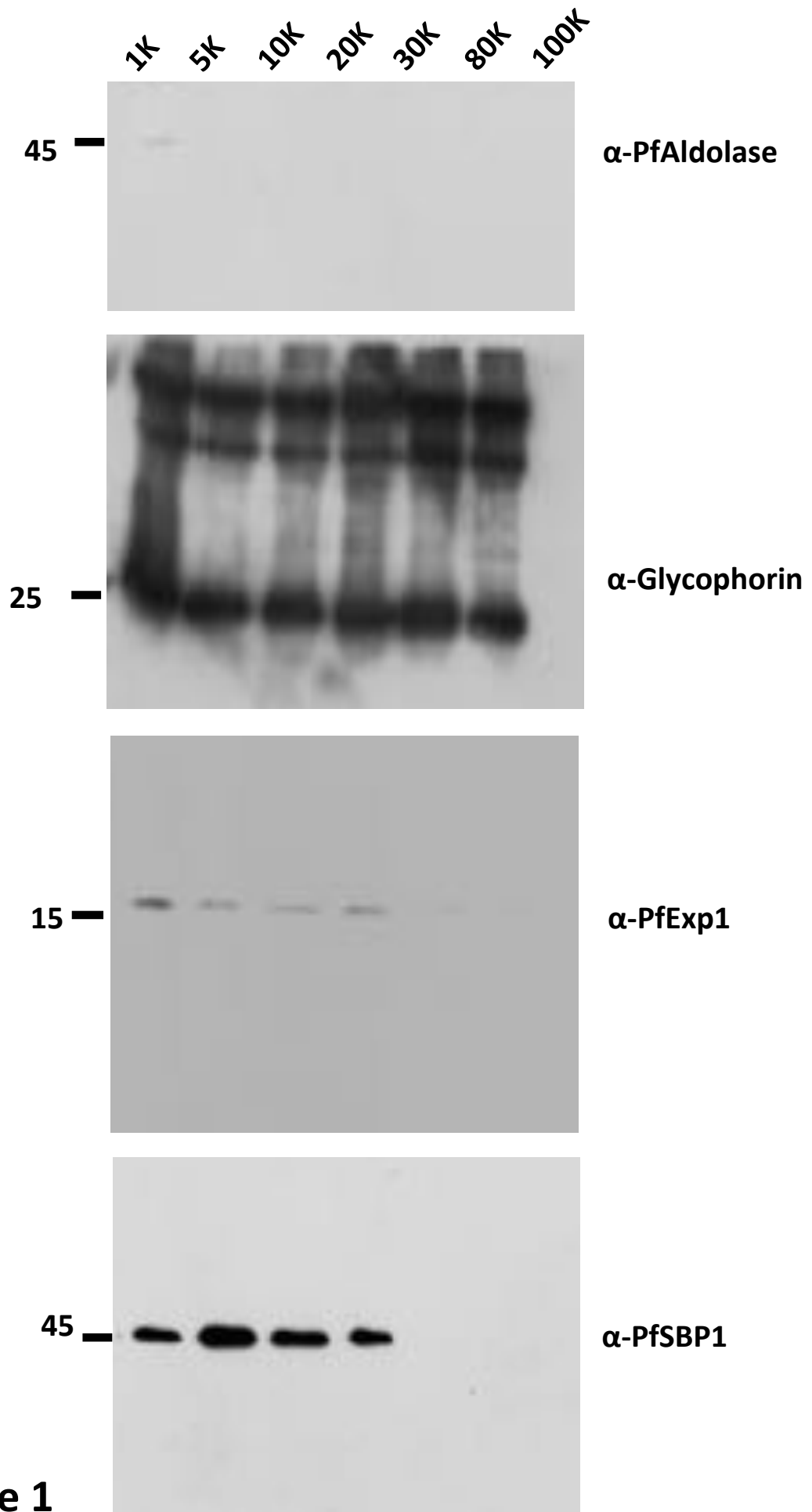


Supplementary Figure S4

## **Supplementary Information file S6**

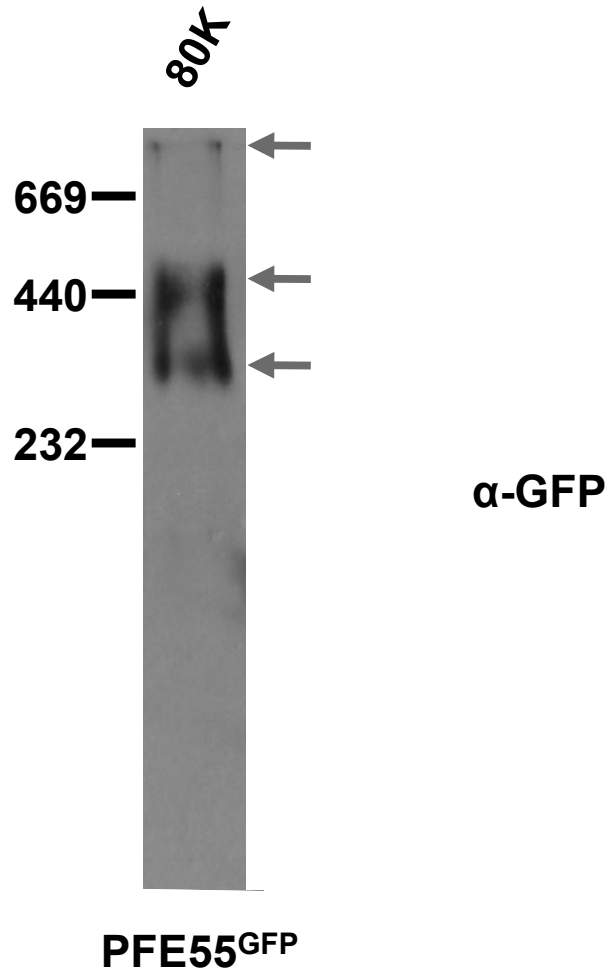


**Figure 1**



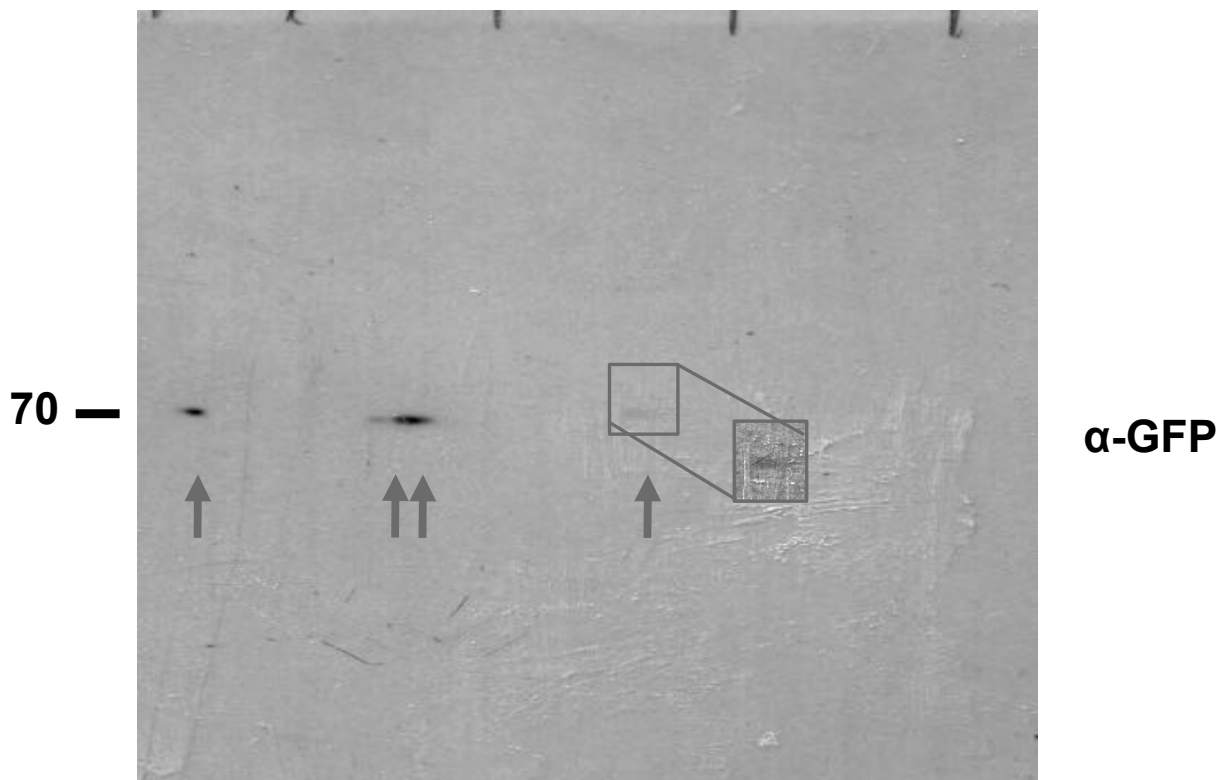
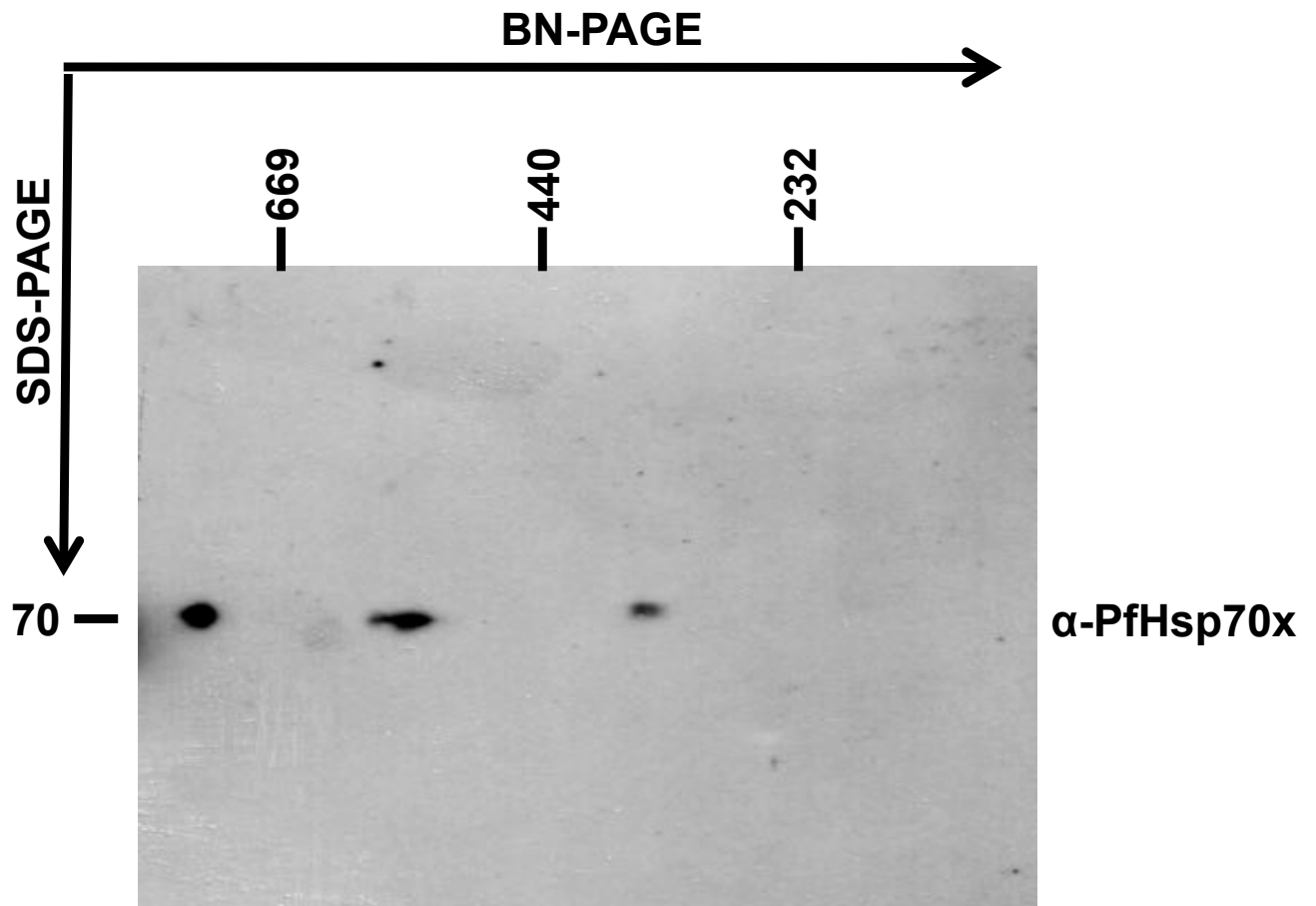
**Figure 1**

**A**



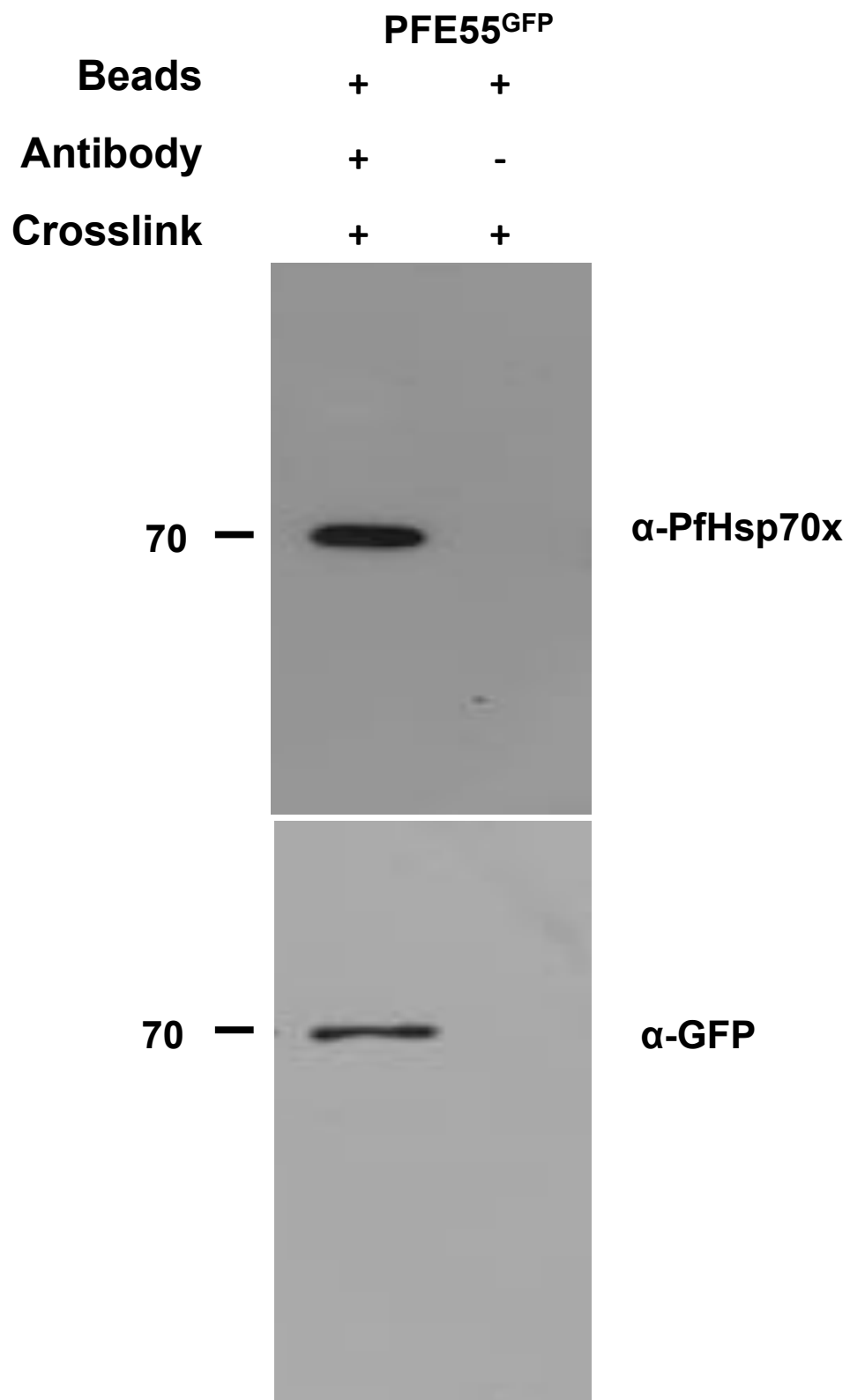
**Figure 2**

**B**



**Figure 2**

**PFE55<sup>GFP</sup>**

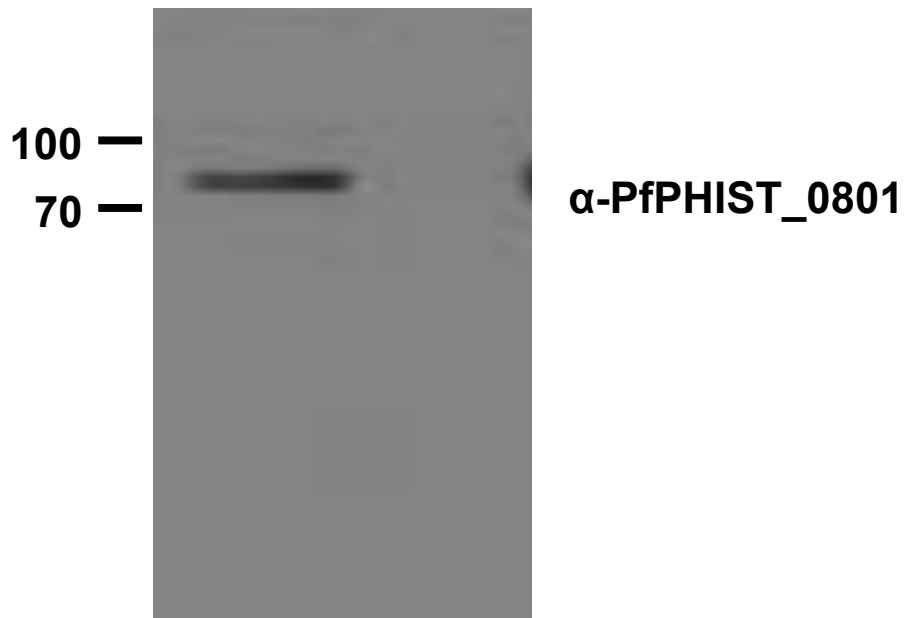
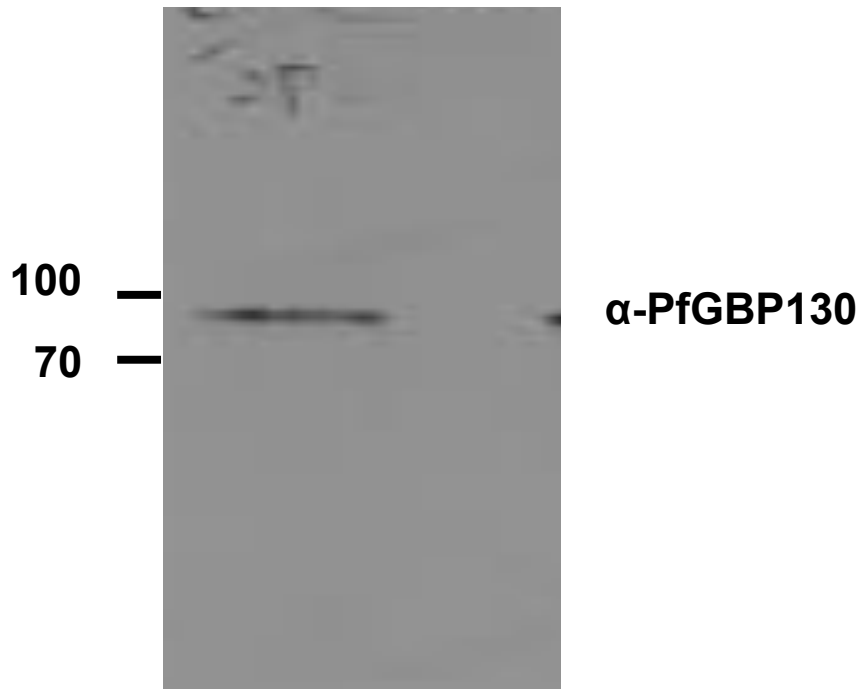


**Figure 3**

IP: α-PfHsp70x

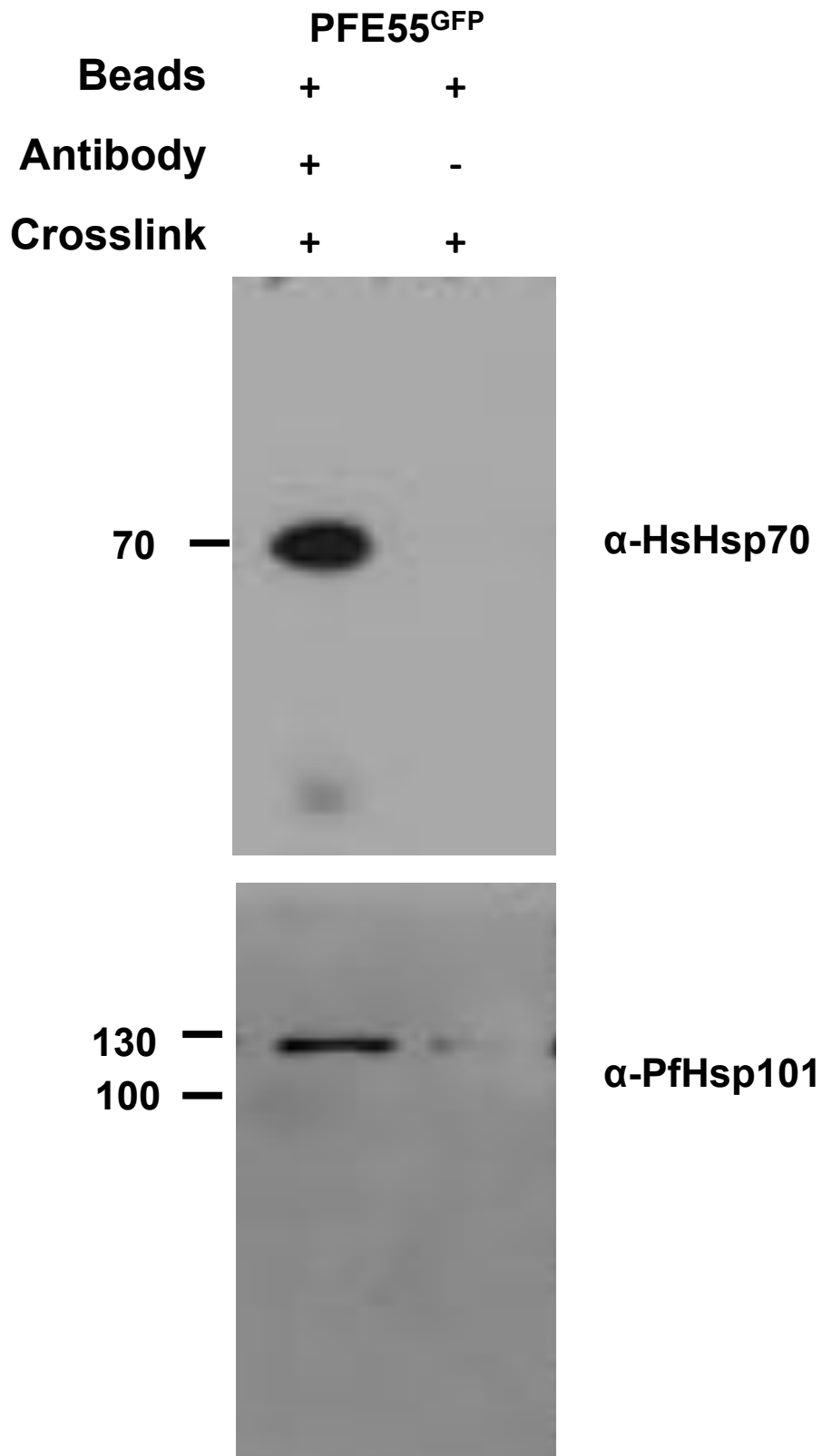


	<b>PFE55<sup>GFP</sup></b>	
<b>Beads</b>	+	+
<b>Antibody</b>	+	-
<b>Crosslink</b>	+	+



**Figure 3**

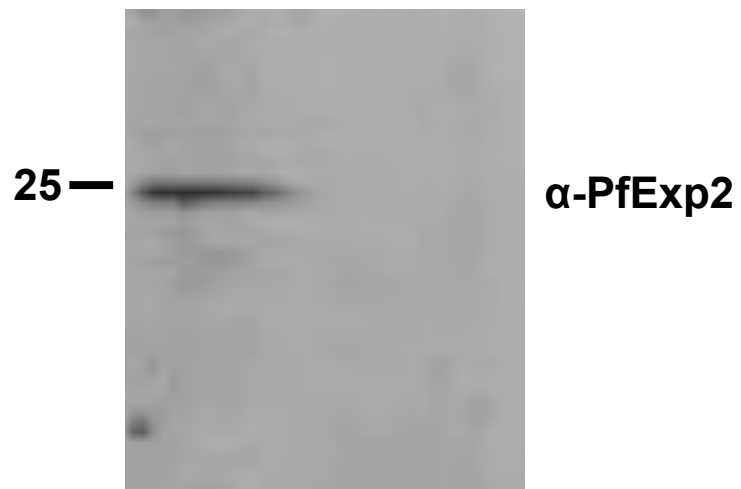
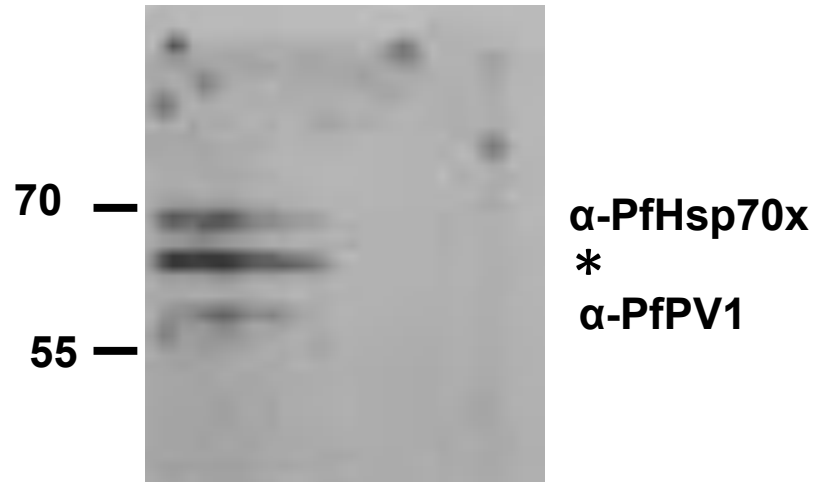
**IP:  $\alpha$ -PfHsp70x**



**Figure 3**

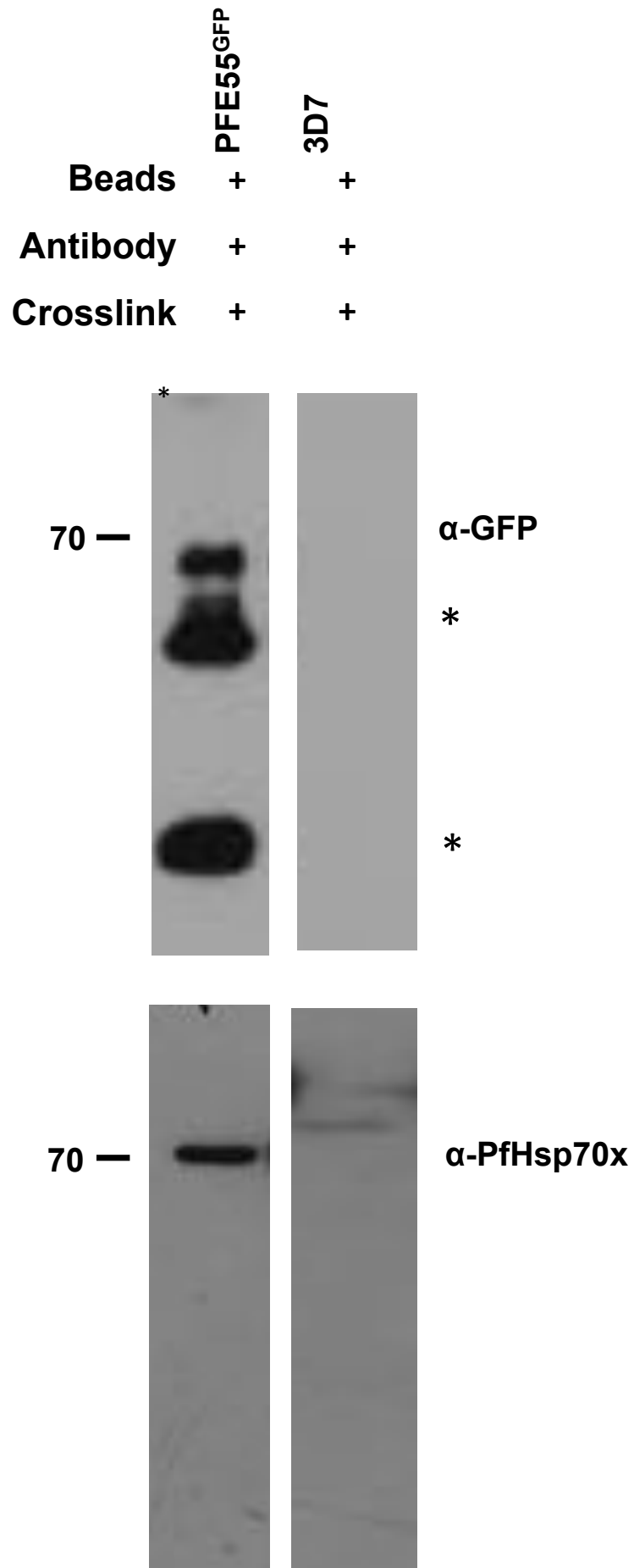
**IP: α-PfHsp70x**

	PFE55 <sup>GFP</sup>	
<b>Beads</b>	+	+
<b>Antibody</b>	+	-
<b>Crosslink</b>	+	+



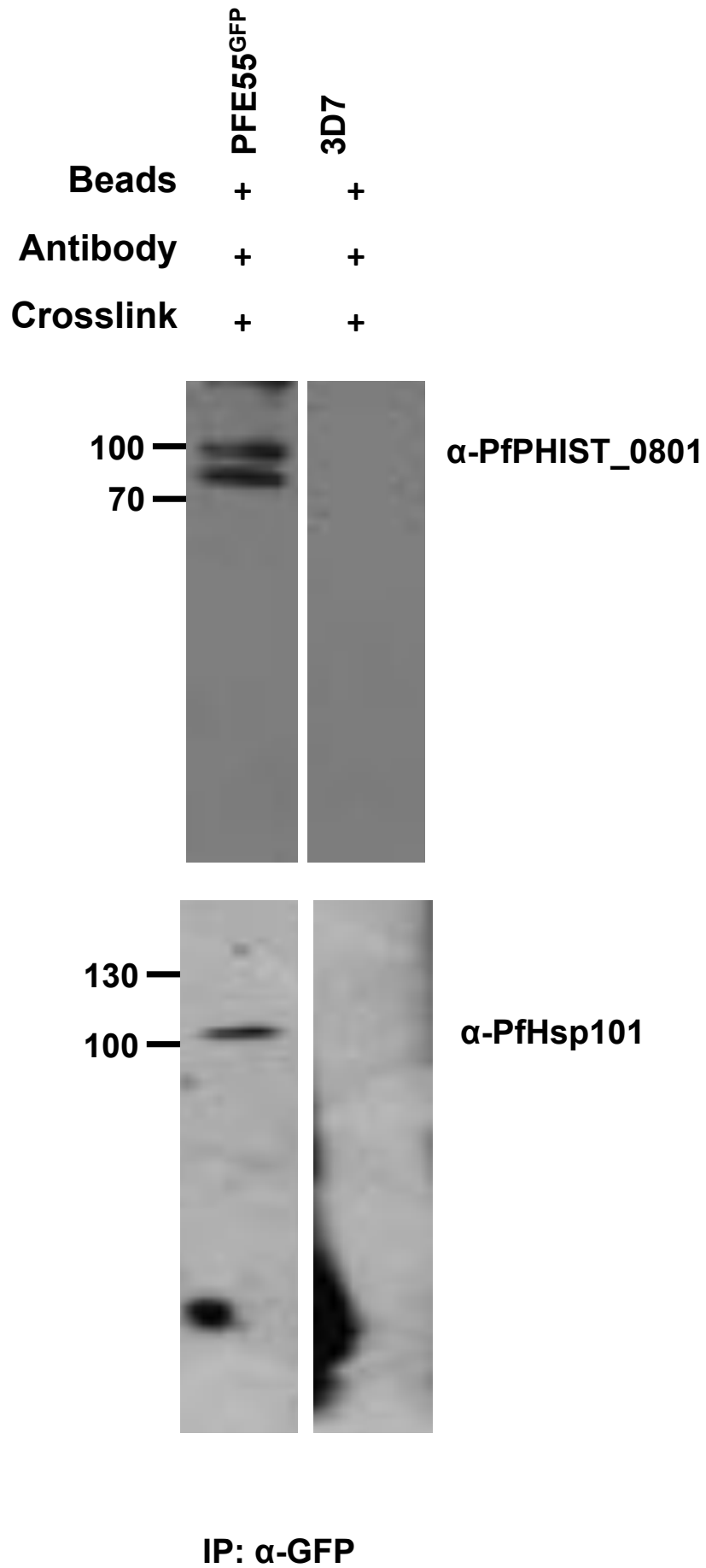
**Figure 3**

**IP: α-PfHsp70x**



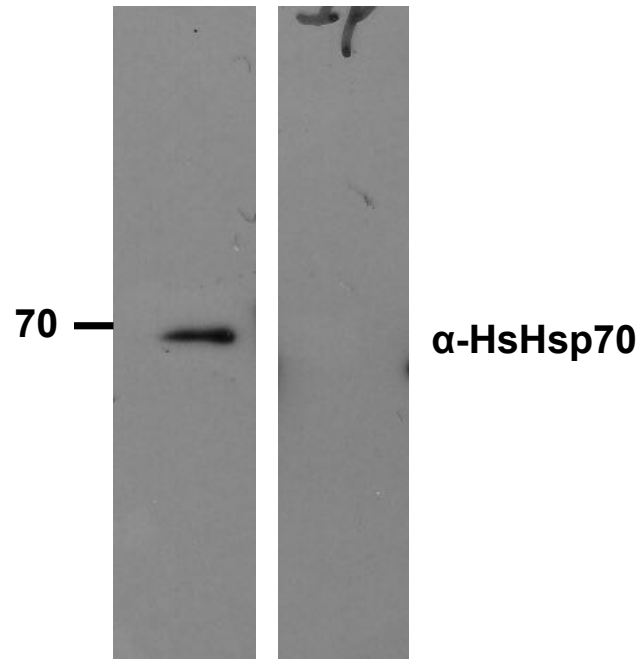
**Figure 4**

**IP: α-GFP**



**Figure 4**

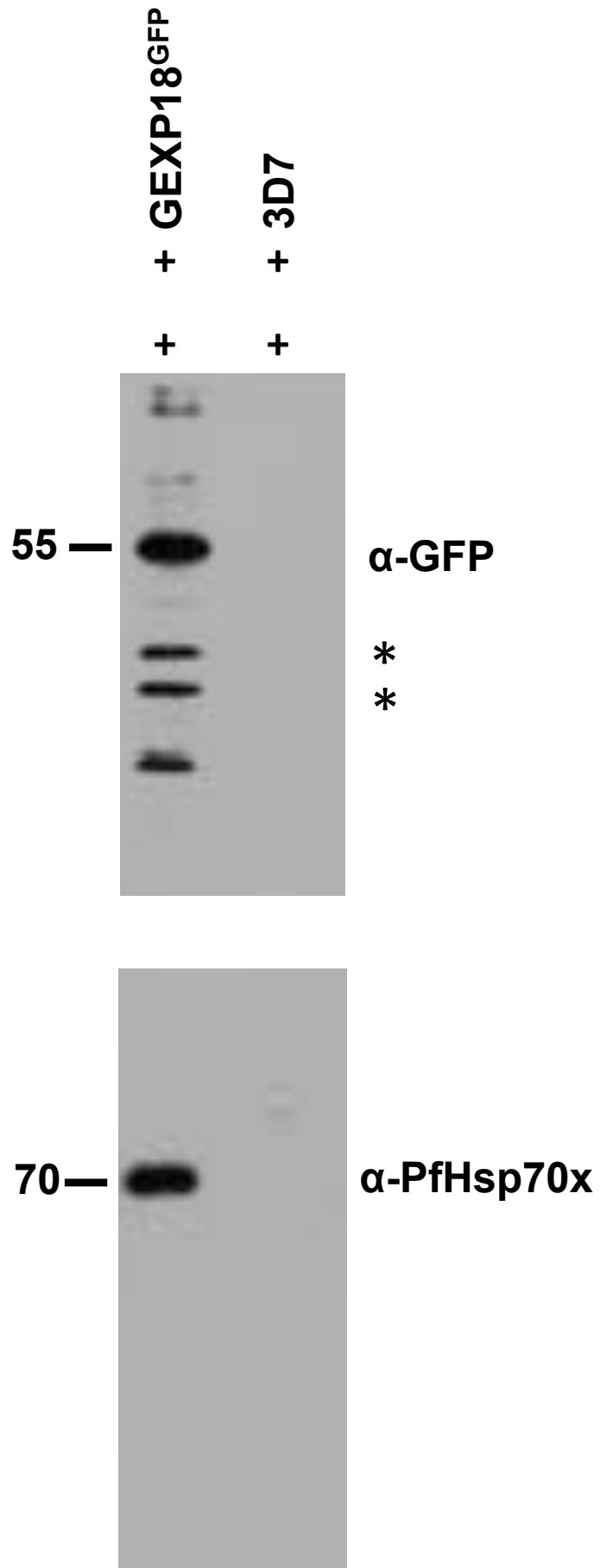
	<b>PFE55<sup>GFP</sup></b>	<b>3D7</b>
<b>Beads</b>	+	+
<b>Antibody</b>	+	+
<b>Crosslink</b>	+	+



**Figure 4**

IP:  $\alpha$ -GFP

**A**

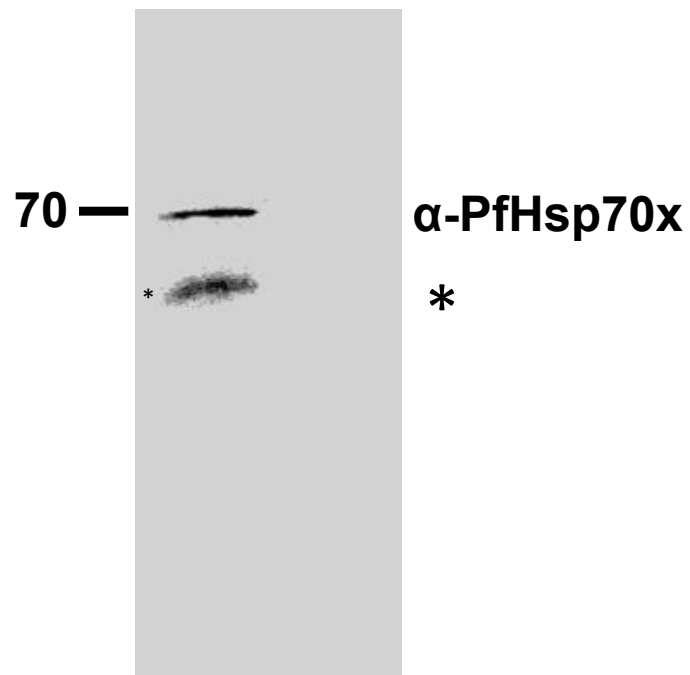
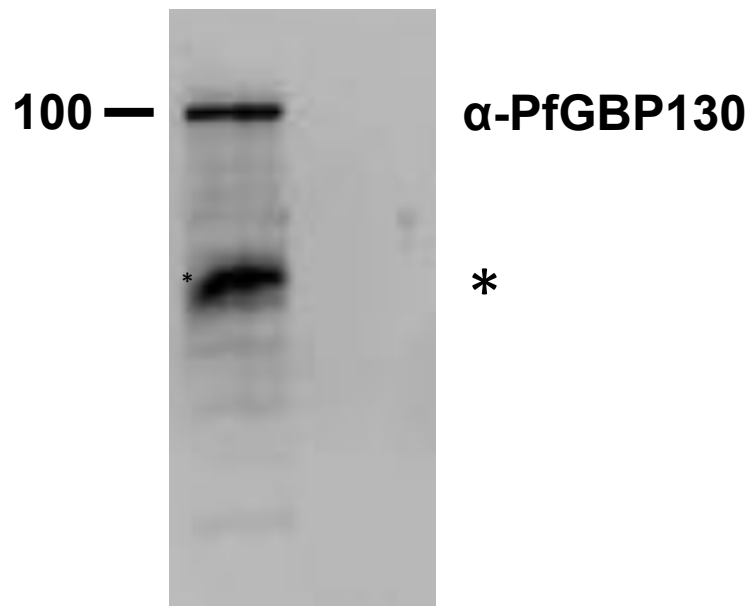


**Figure 6**

**IP: α-GFP**

**B**

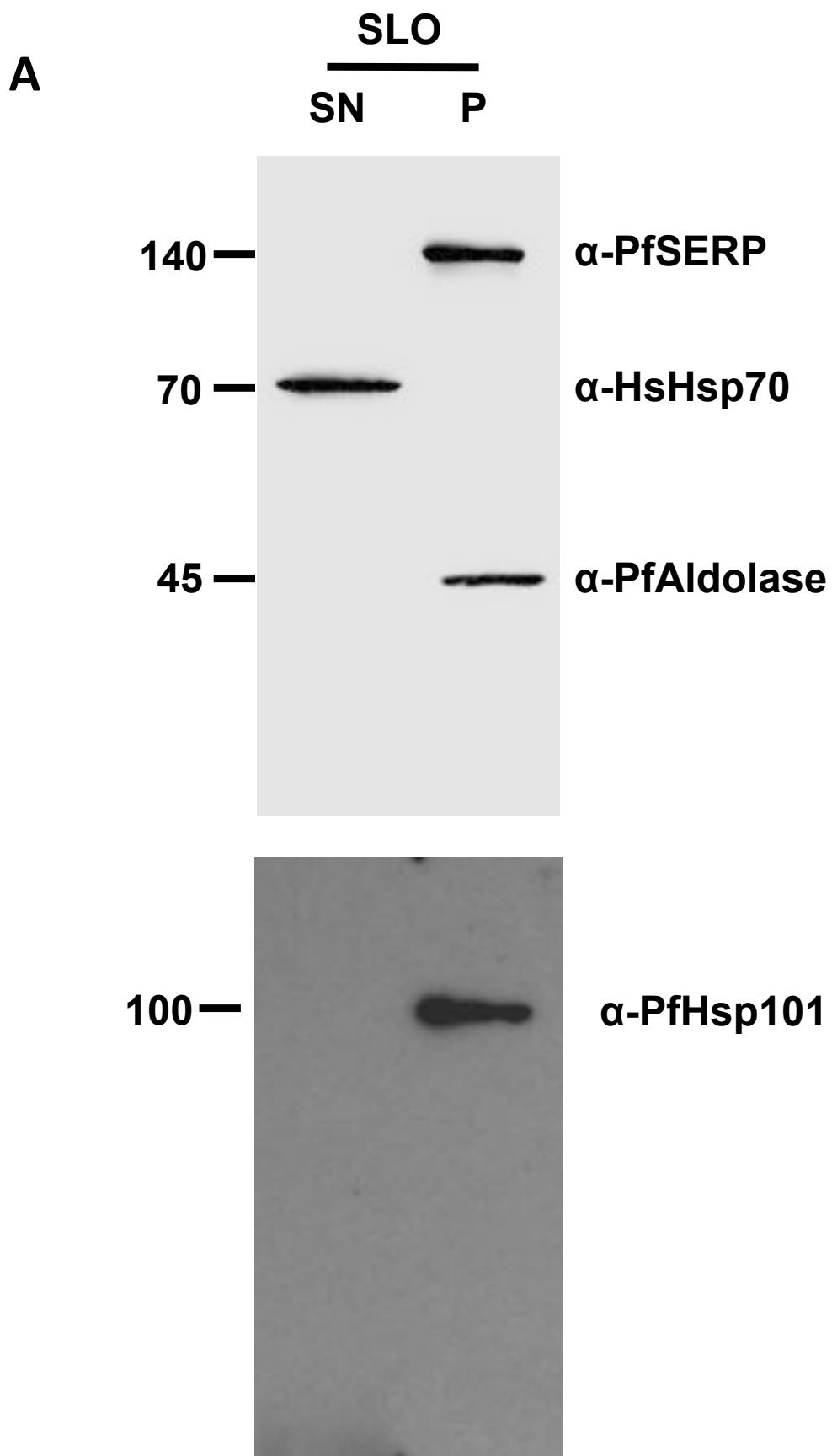
	<b>PFE55<sup>GFP</sup></b>	
<b>Beads</b>	<b>+</b>	<b>+</b>
<b>Antibody</b>	<b>+</b>	<b>-</b>
<b>Crosslink</b>	<b>+</b>	<b>+</b>



**Figure 6**

**IP:  $\alpha$ -PfGBP130**



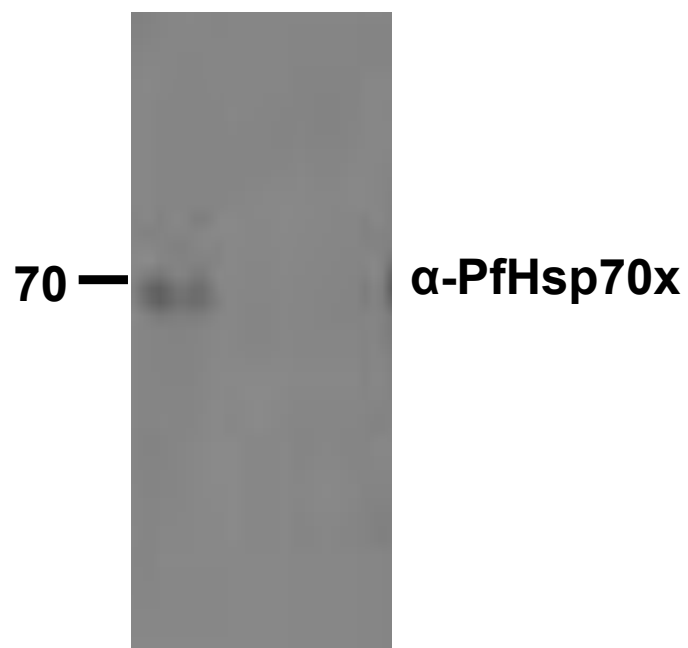
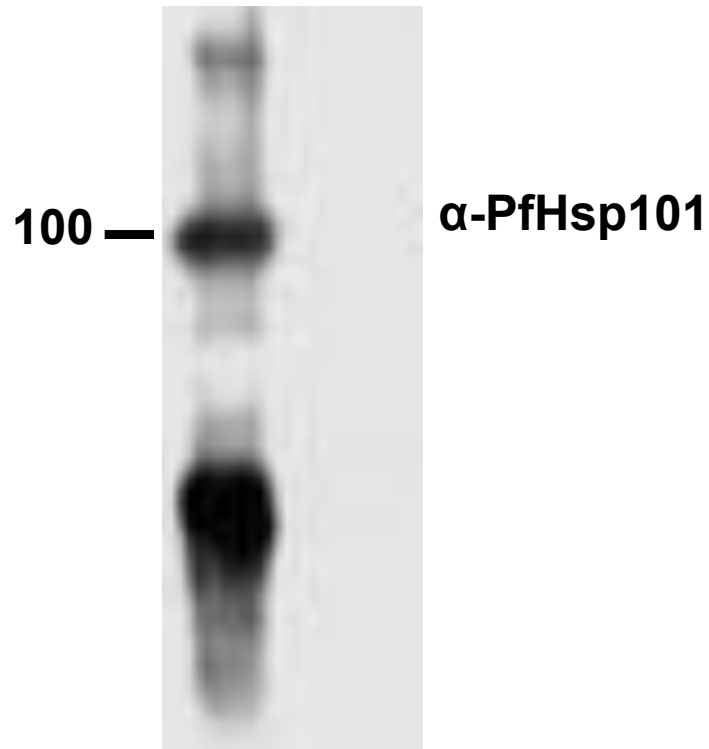


**Figure 7**      **PFE55<sup>GFP</sup>**

**B**

**PFE55<sup>GFP</sup>**

<b>Beads</b>	<b>+</b>	<b>+</b>
<b>Antibody</b>	<b>+</b>	<b>-</b>
<b>Crosslink</b>	<b>+</b>	<b>+</b>

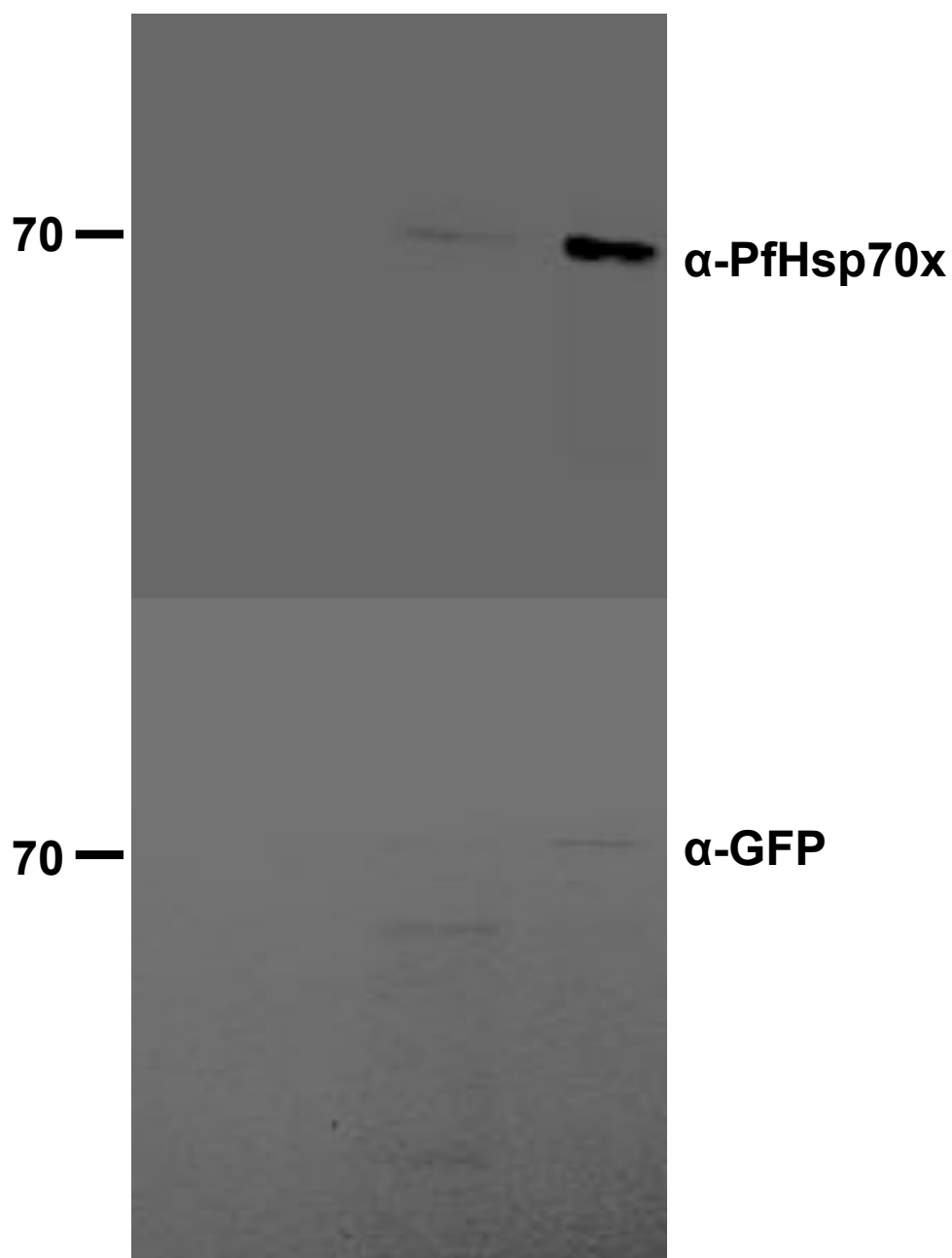


**Figure 7**

**IP:  $\alpha$ -PfHsp101**

**C**

	<b>PFE55<sup>GFP</sup></b>			
<b>SAP</b>	<b>+</b>	<b>+</b>	<b>-</b>	<b>-</b>
<b>SLO</b>	<b>-</b>	<b>-</b>	<b>+</b>	<b>+</b>
<b>Proteinase K</b>	<b>+</b>	<b>+</b>	<b>+</b>	<b>+</b>
	<b>U</b>	<b>B</b>	<b>U</b>	<b>B</b>

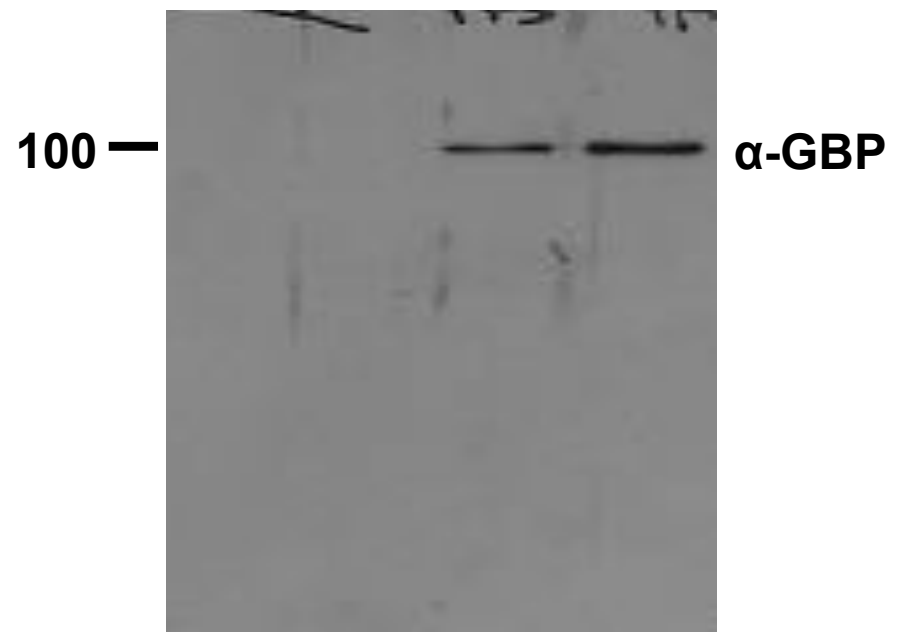
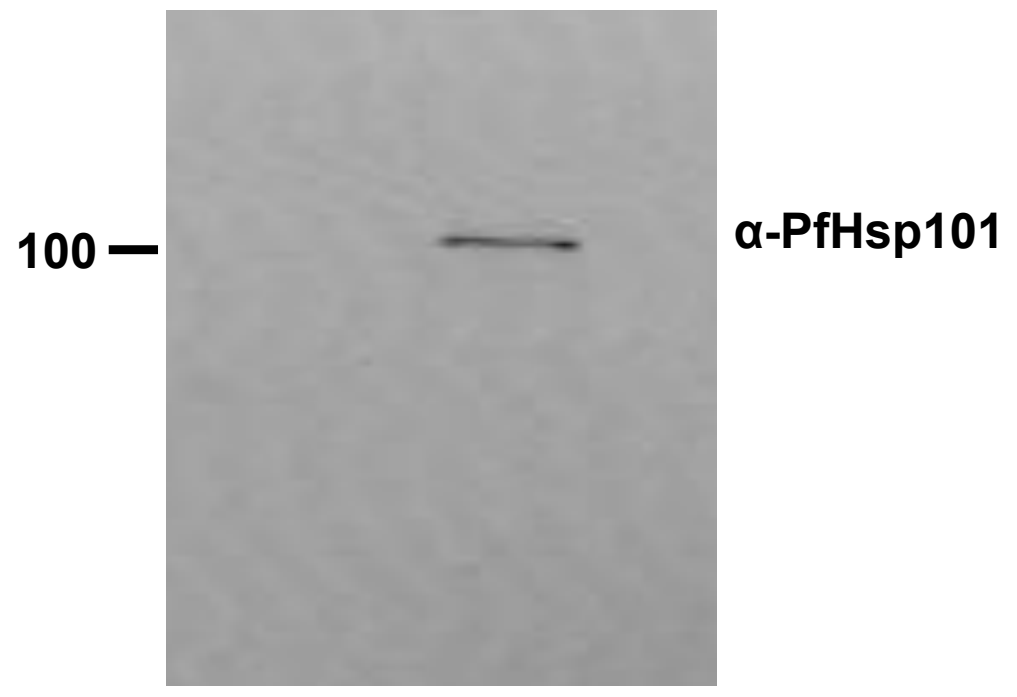


**Figure 7**

**IP:  $\alpha$ -PfHsp70x**

**C**

	<b>PFE55<sup>GFP</sup></b>			
<b>SAP</b>	<b>+</b>	<b>+</b>	<b>-</b>	<b>-</b>
<b>SLO</b>	<b>-</b>	<b>-</b>	<b>+</b>	<b>+</b>
<b>Proteinase K</b>	<b>+</b>	<b>+</b>	<b>+</b>	<b>+</b>
	<b>U</b>	<b>B</b>	<b>U</b>	<b>B</b>



**Figure 7**

**IP:  $\alpha$ -PfHsp70x**