

## Supplementary Information

### **Multi-institutional study of nuclear KIFC1 as a biomarker of poor prognosis in African American women with triple-negative breast cancer**

Angela Ogden<sup>1</sup>, Chakravarthy Garlapati<sup>1</sup>, Xiaoxian (Bill) Li<sup>2</sup>, Ravi Chakra Turaga<sup>1</sup>, Nikita Wright<sup>1</sup>, Shristi Bhattarai<sup>1</sup>, Karuna Mittal<sup>1</sup>, Ceyda Sönmez Wetherilt<sup>1,2</sup>, Uma Krishnamurti<sup>2</sup>, Michelle D. Reid<sup>2</sup>, Mildred Jones<sup>3</sup>, Meenakshi Gupta<sup>4</sup>, Remus Osan<sup>5</sup>, Sonal Pattni<sup>2</sup>, Ansa Riaz<sup>1</sup>, Sergey Klimov<sup>1</sup>, Arundhati Rao<sup>6</sup>, Guilherme Cantuaria<sup>3</sup>, Padmashree C. G. Rida<sup>1,7\*</sup>, Ritu Aneja<sup>1\*</sup>

<sup>1</sup>Georgia State University, Department of Biology, Atlanta, GA

<sup>2</sup>Emory University School of Medicine, Department of Pathology, Atlanta, GA

<sup>3</sup>Northside Hospital Cancer Institute, Atlanta, GA

<sup>4</sup>West Georgia Medical Center, Department of Pathology, LaGrange, GA

<sup>5</sup>Georgia State University, Department of Mathematics and Statistics, Atlanta, GA

<sup>6</sup>Baylor Scott & White Medical Center, Department of Pathology, Taylor, TX

<sup>7</sup>Novazoi Theranostics, Rolling Hills Estates, CA

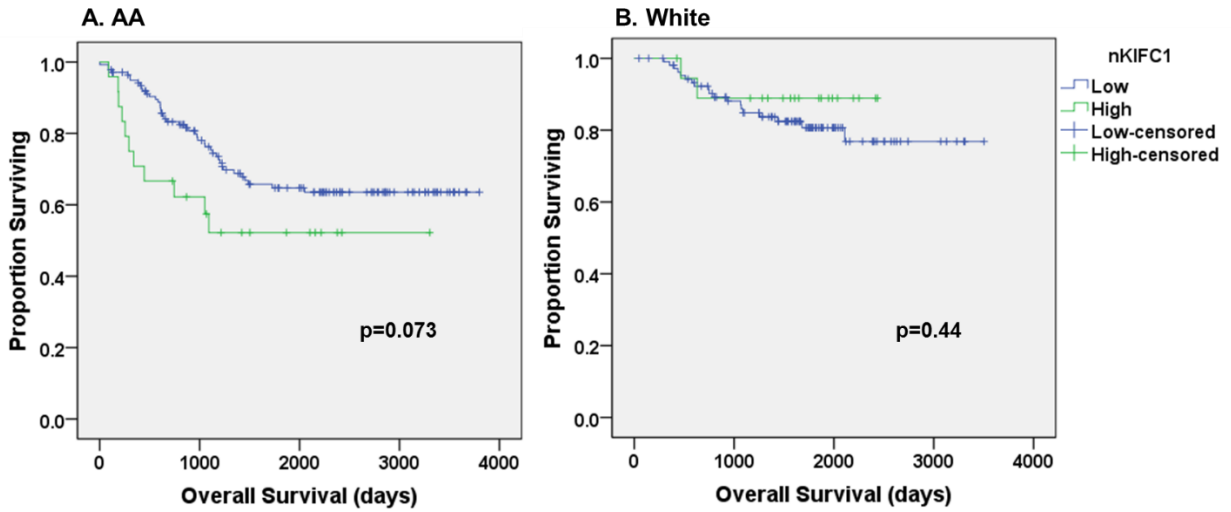
\*Corresponding Authors:

Ritu Aneja, Department of Biology, Georgia State University, Atlanta, GA, USA

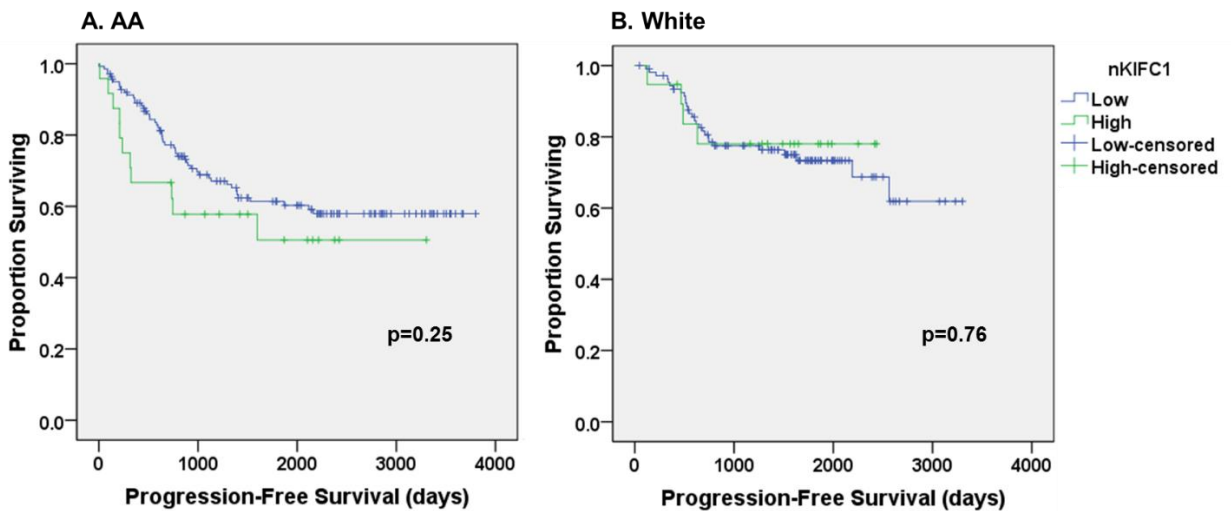
Email: raneja@gsu.edu; Phone: 404-413-5417; Fax: 404-413-5301

Padmashree C. G. Rida, Department of Biology, Georgia State University, Atlanta, GA, USA; Novazoi Theranostics, Rolling Hills Estates, CA, USA

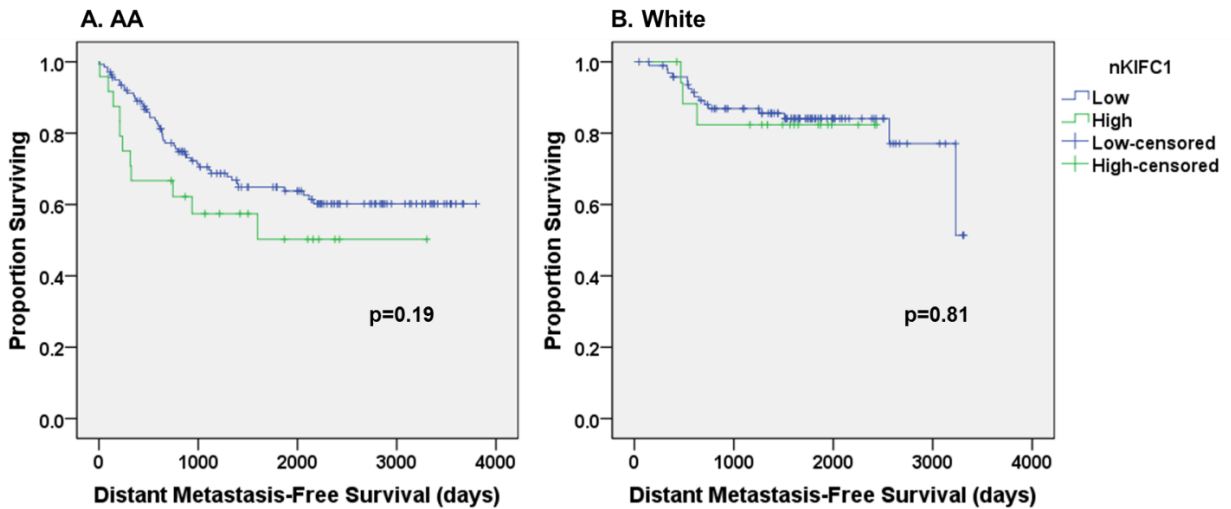
Email: prida@gsu.edu; Phone: 404-783-7733; Fax: 404-413-5301



**Supplementary Figure 1.** Kaplan-Meier curves of overall survival based on nKIFC1 weighted index (stratified by 1 standard deviation above the mean) in **A.** African American (AA) and **B.** White triple-negative breast cancer patients.



**Supplementary Figure 2.** Kaplan-Meier curves of progression-free survival based on nKIFC1 weighted index (stratified by 1 standard deviation above the mean) in **A.** African American (AA) and **B.** White triple-negative breast cancer patients.



**Supplementary Figure 3.** Kaplan-Meier curves of distant metastasis-free survival based on nKIFC1 weighted index (stratified by 1 standard deviation above the mean) in **A.** African American (AA) and **B.** White triple-negative breast cancer patients.