

Supplemental Table 1. Top SNPs in CL/P, CP, and all OFC meta-analyses in European subgroup

CL/P									
CHR	BP	SNP	Minor Allele	Major Allele	OR	X2	P	L95	U95
1	18976489	rs9439714	C	T	1.47	41.90	7.98E-10	1.31	1.65
8	88868340	rs12543318	C	A	1.41	35.11	2.38E-08	1.26	1.58
8	129933720	rs72728734	G	A	2.06	116.14	6.02E-26	1.81	2.35
17	8947708	rs12944377	C	T	0.67	42.86	4.92E-10	0.60	0.76
17	61076428	rs1588366	G	A	0.65	37.06	8.98E-09	0.56	0.74
20	3982658	rs113788813	A	G	3.08	23.92	6.40E-06	1.96	4.83

CP									
CHR	BP	SNP	Minor Allele	Major Allele	OR	X2	P	L95	U95
1	24816853	rs112392969	A	C	3.15	25.62	2.73E-06	2.02	4.91
11	102507415	rs2260433	G	T	1.74	23.30	8.70E-06	1.39	2.17

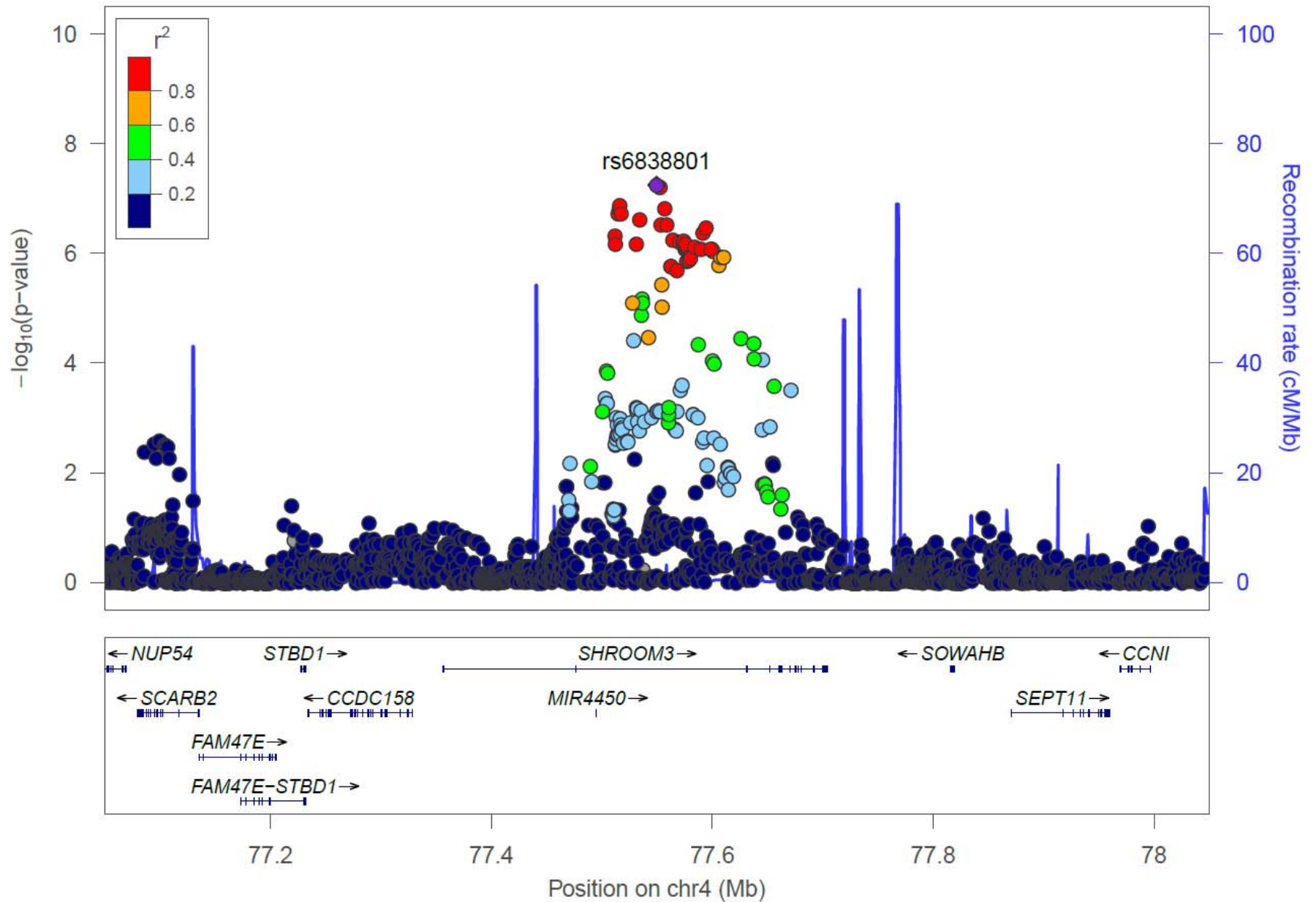
All OFCs									
CHR	BP	SNP	Minor Allele	Major Allele	OR	X2	P	L95	U95
1	18976489	rs9439714	C	T	1.33	29.00	5.04E-07	1.20	1.47
6	10296336	rs1333657	T	C	1.29	23.39	8.34E-06	1.16	1.42
8	88868340	rs12543318	C	A	1.34	31.78	1.26E-07	1.21	1.48
8	129933720	rs72728734	G	A	1.76	88.76	5.32E-20	1.56	1.98
17	8947708	rs12944377	C	T	0.71	41.81	8.32E-10	0.64	0.79

Supplemental Table 2. Top SNPs in CL/P, CP, and all OFC meta-analyses in Asian subgroup

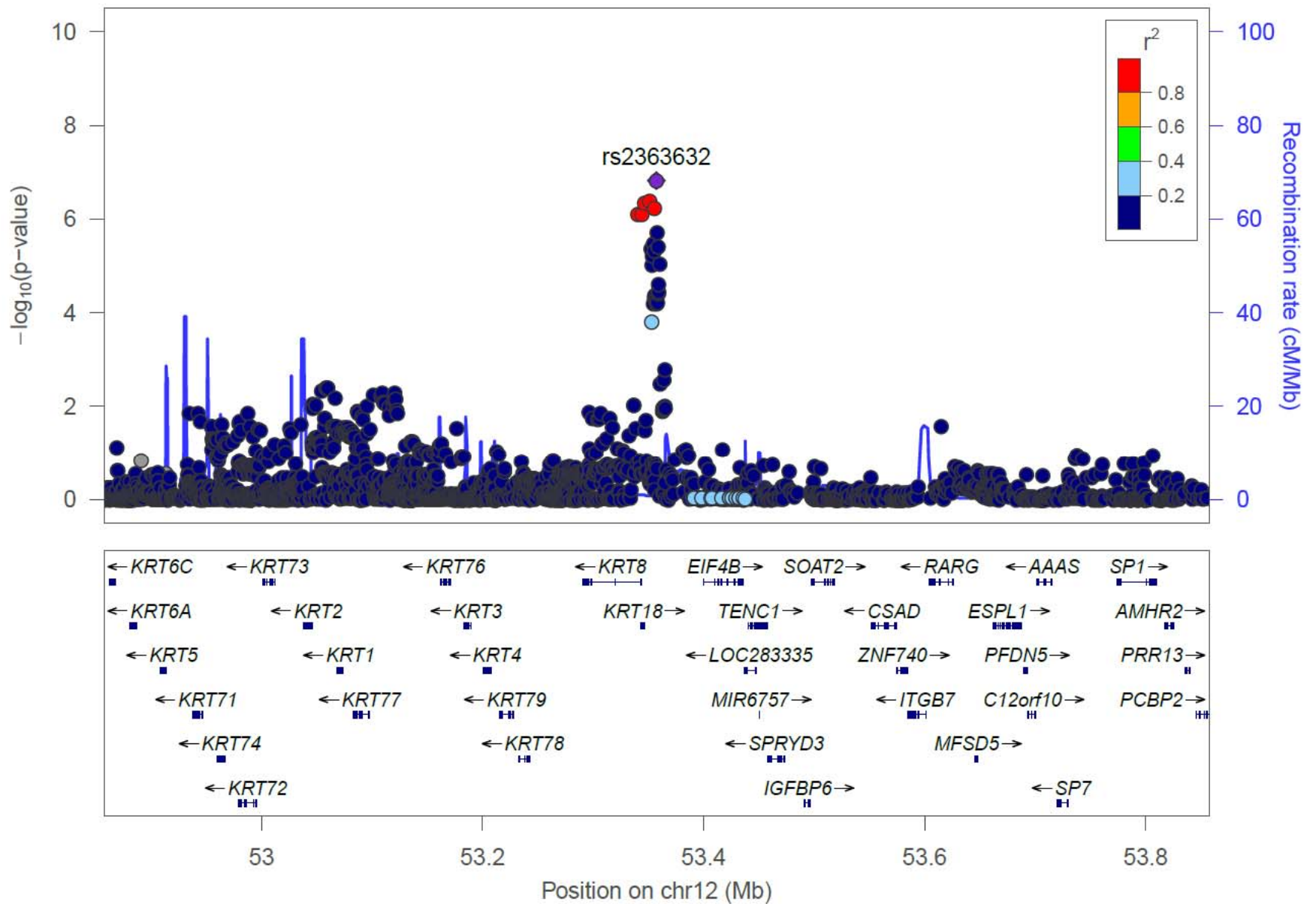
CL/P									
CHR	BP (Hg19)	SNP	Minor Allele	Major Allele	OR	X2	P	L95	U95
1	94558110	rs66515264	T	G	1.63	35.55	1.91E-08	1.39	1.91
1	209982025	rs6540559	A	G	0.60	70.23	5.62E-16	0.54	0.68
3	99701134	rs7616988	G	A	0.64	25.13	3.49E-06	0.54	0.76
10	118846294	rs10886040	G	C	1.39	32.33	9.55E-08	1.24	1.56
12	53357335	rs2363632	G	T	0.75	23.95	6.31E-06	0.67	0.84
17	8943063	rs9911652	T	C	1.56	34.73	2.87E-08	1.35	1.81
20	39284775	rs6029258	A	G	0.65	52.30	4.39E-12	0.58	0.73

CP									
CHR	BP	SNP	Minor Allele	Major Allele	OR	X2	P	L95	U95
8	83260231	rs7000204	T	C	0.53	20.67	5.45E-06	0.40	0.70
8	141513072	rs4246129	C	G	0.50	20.89	4.86E-06	0.38	0.68
16	25201980	rs57933945	T	C	0.35	21.95	2.80E-06	0.23	0.54

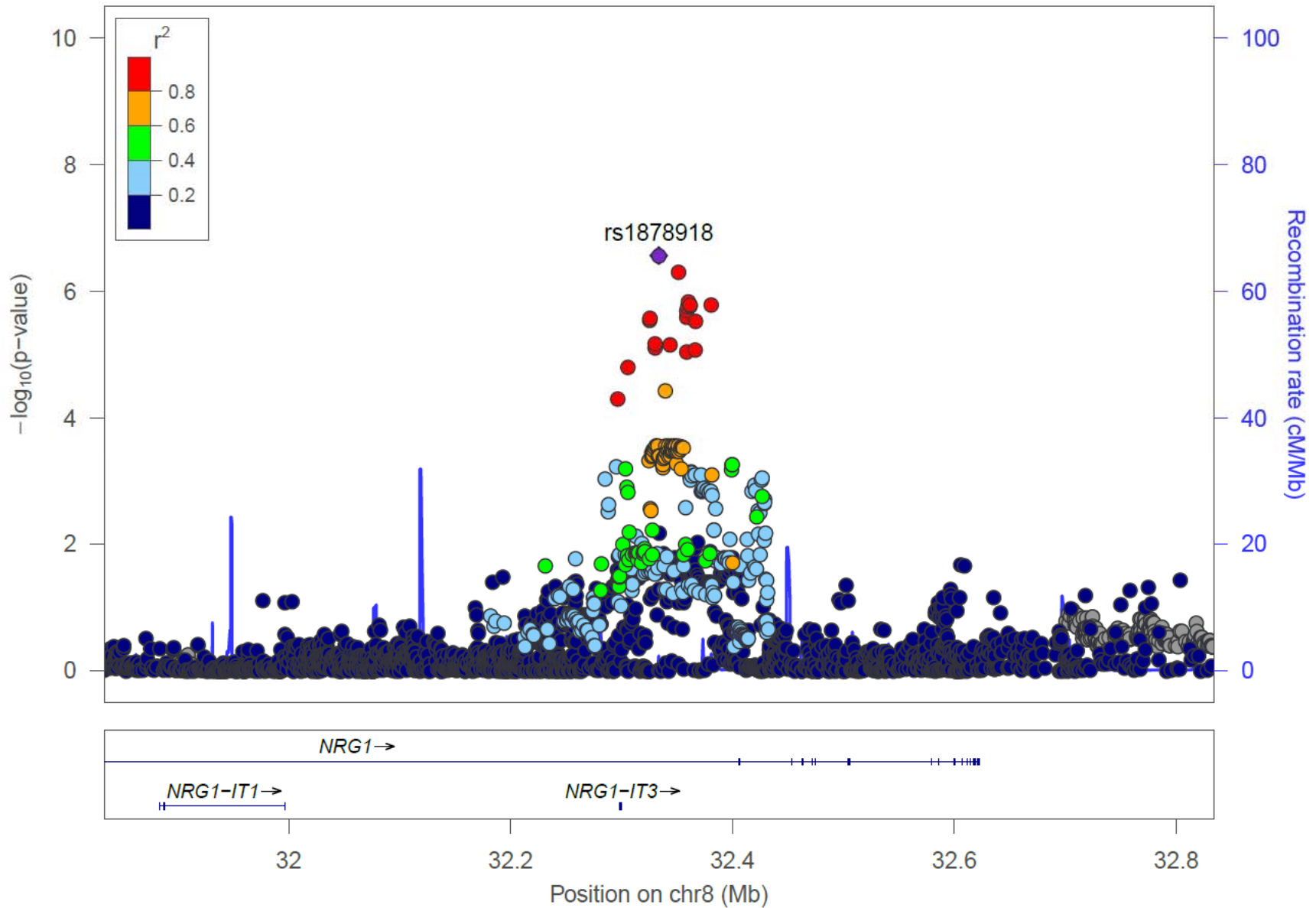
All OFCs									
CHR	BP	SNP	Minor Allele	Major Allele	OR	X2	P	L95	U95
1	94575308	rs3789432	C	T	0.71	36.94	9.52E-09	0.64	0.79
1	209992127	rs12070337	A	G	0.68	51.54	6.43E-12	0.61	0.75
9	127510669	rs78427461	A	T	1.41	23.37	8.42E-06	1.23	1.62
10	118817067	rs1898349	T	C	1.35	31.56	1.40E-07	1.21	1.49
17	8948104	rs16957821	G	C	1.39	23.03	9.99E-06	1.21	1.58
20	39284775	rs6029258	A	G	0.68	51.81	5.61E-12	0.62	0.76



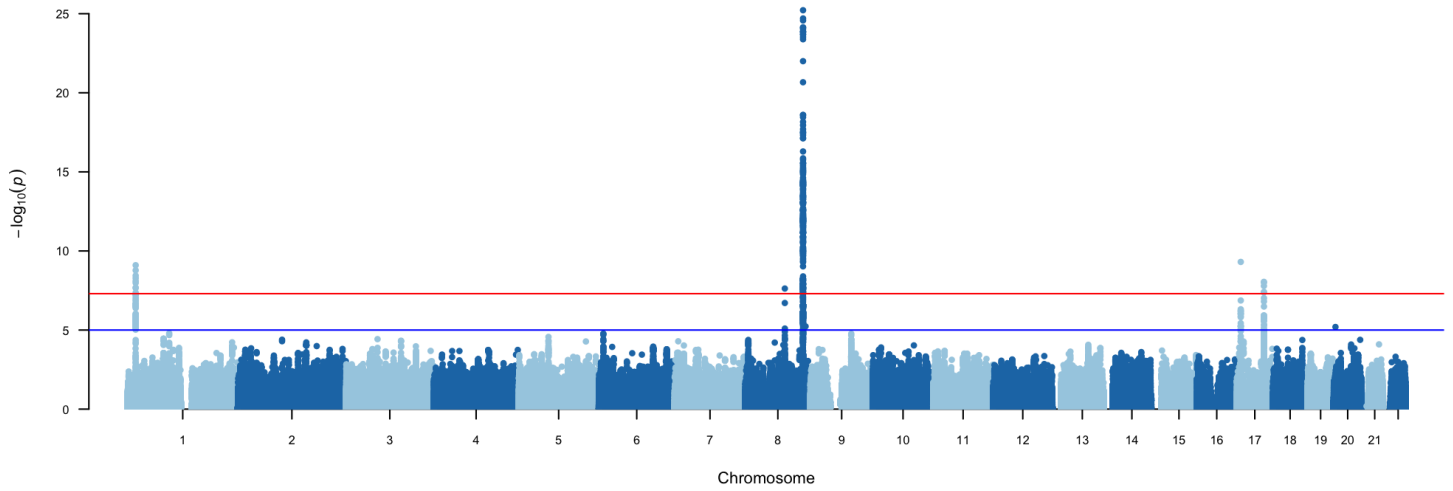
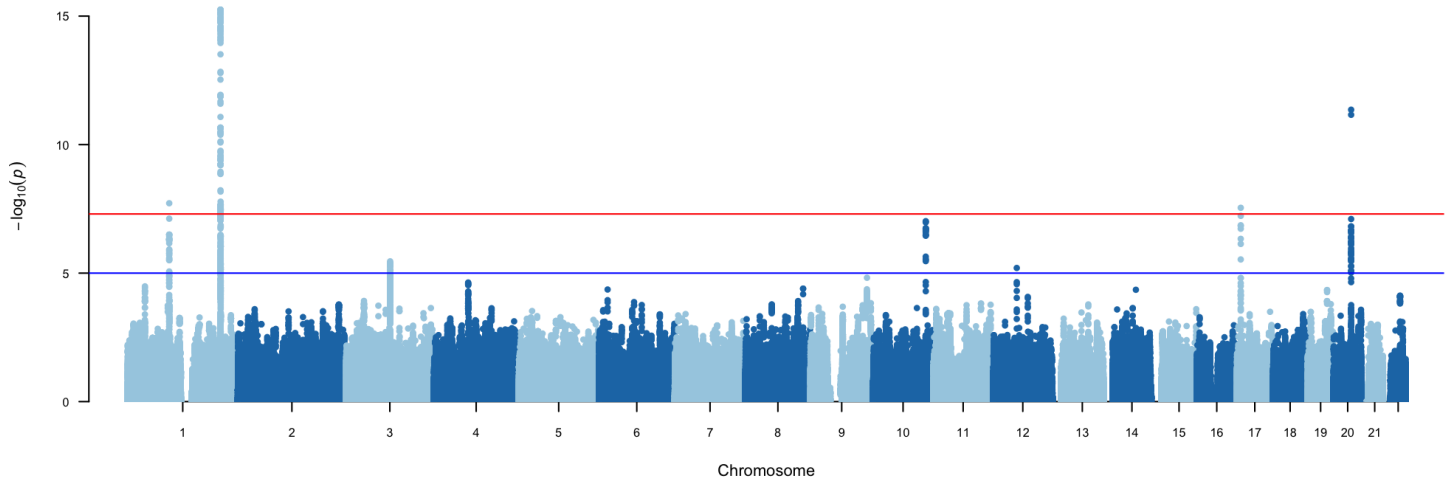
Supplemental Figure 1. Regional plot for 4q21.1 locus from CL/P meta-analysis.



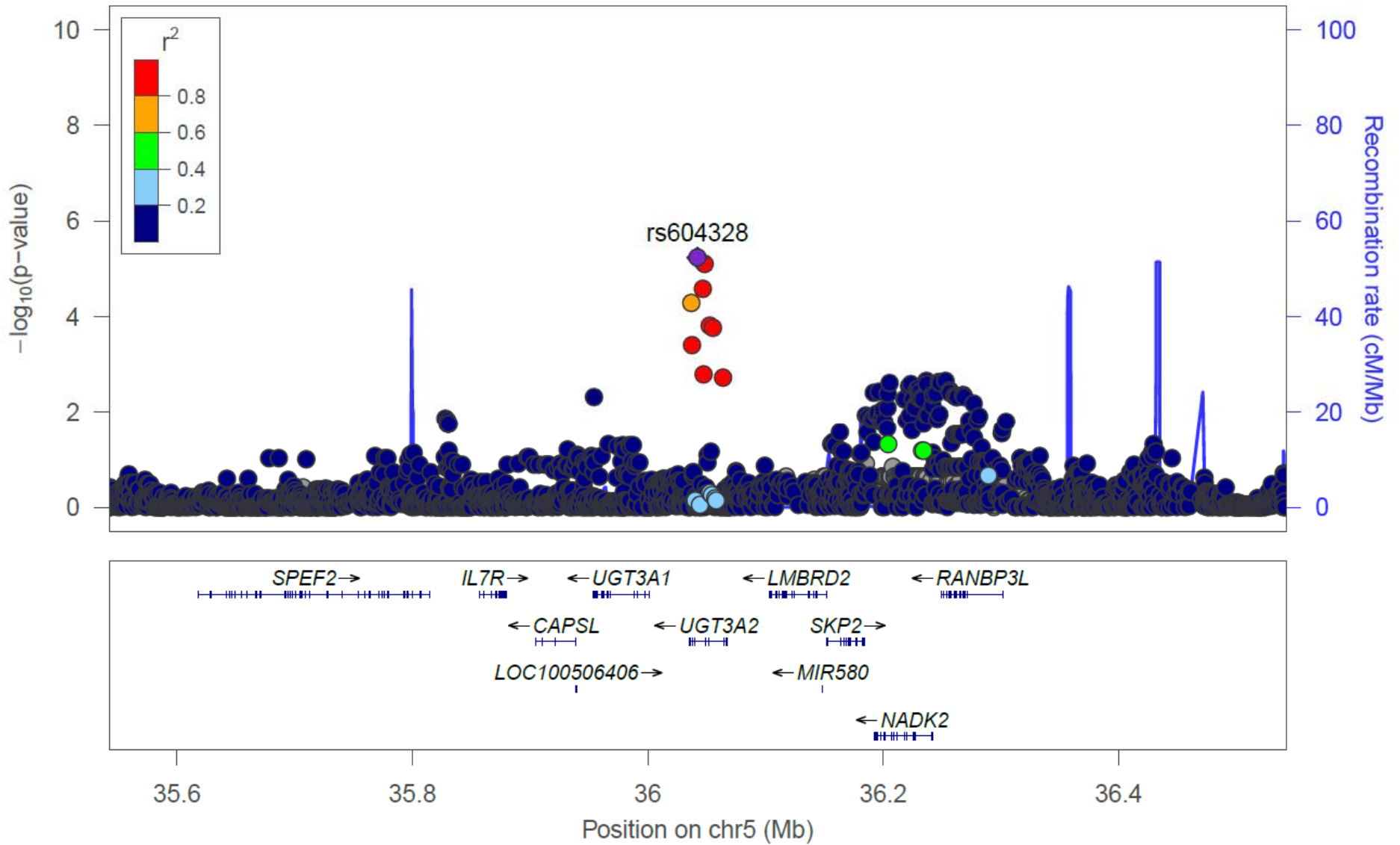
Supplemental Figure 2. Regional plot for 12q13.1 locus from CL/P meta-analysis.



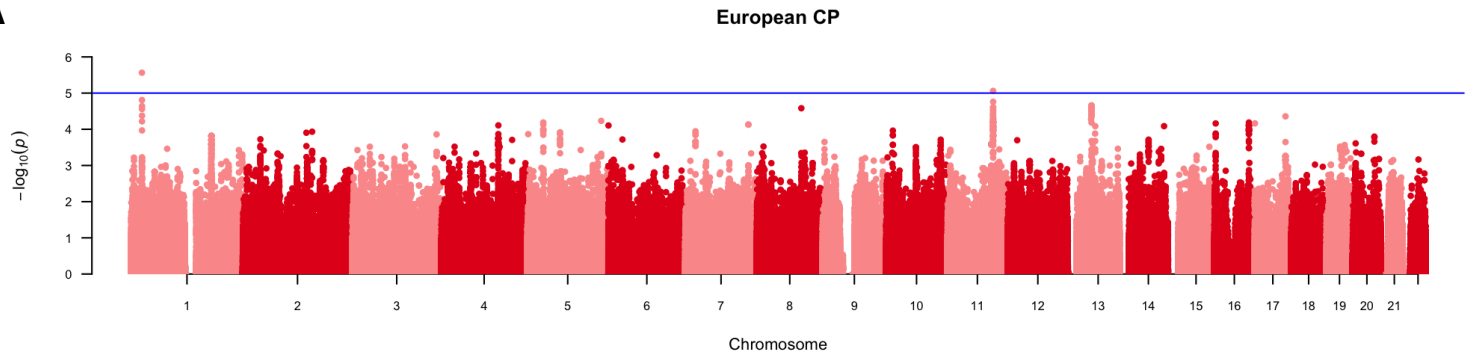
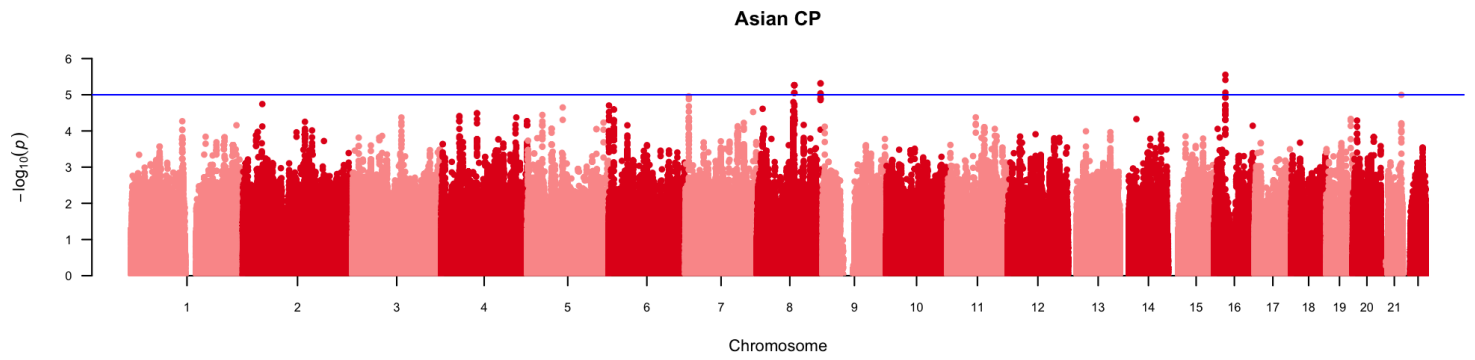
Supplemental Figure 3. Regional plot for 8p21 locus from CL/P meta-analysis.

A**European CL/P****B****Asian CL/P**

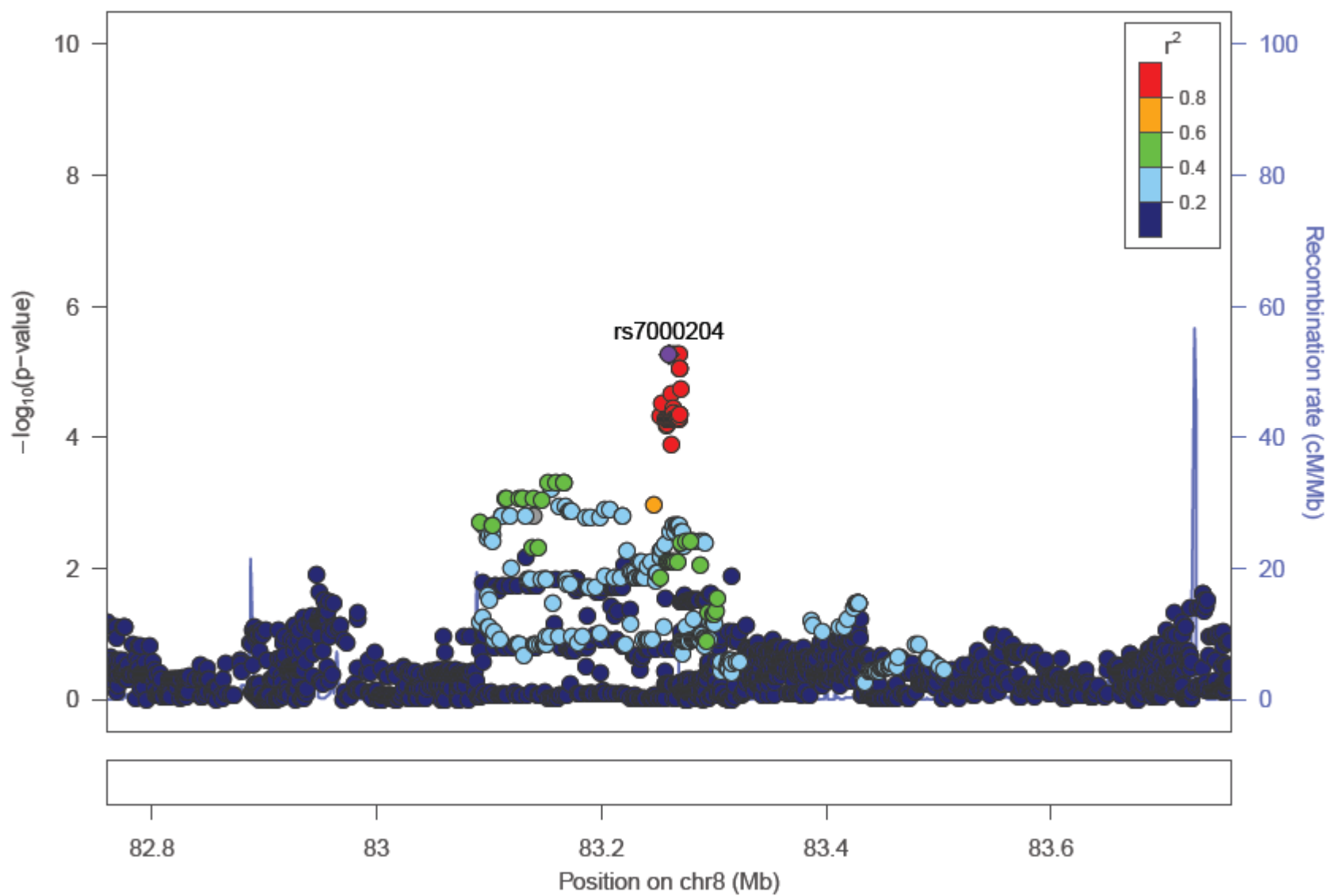
Supplemental Figure 4. Manhattan plots for CL/P meta-analysis of (A) Europeans and (B) Asians.



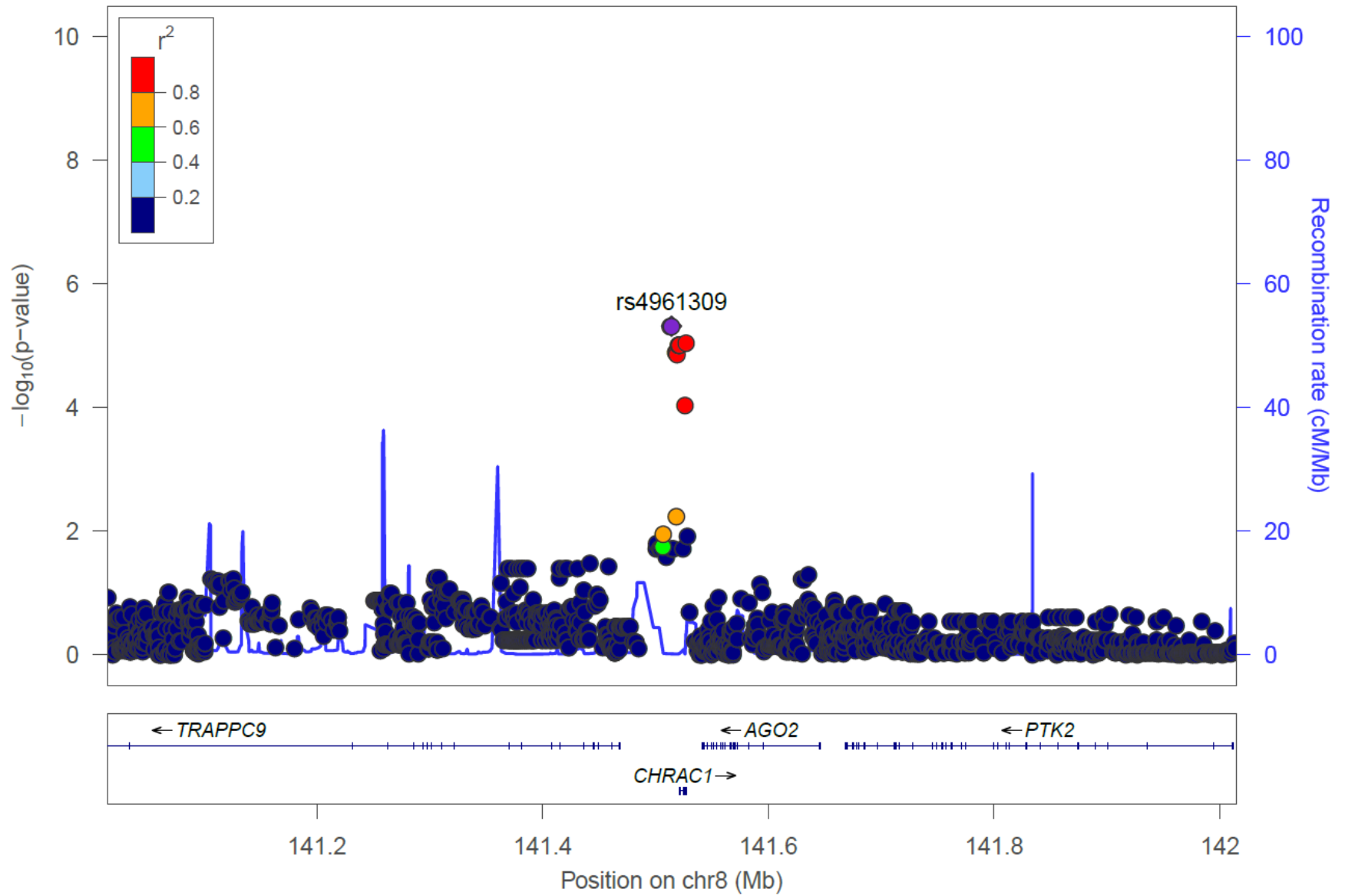
Supplemental Figure 5. Regional plot for 5p13.2 locus from CP meta-analysis.

A**B**

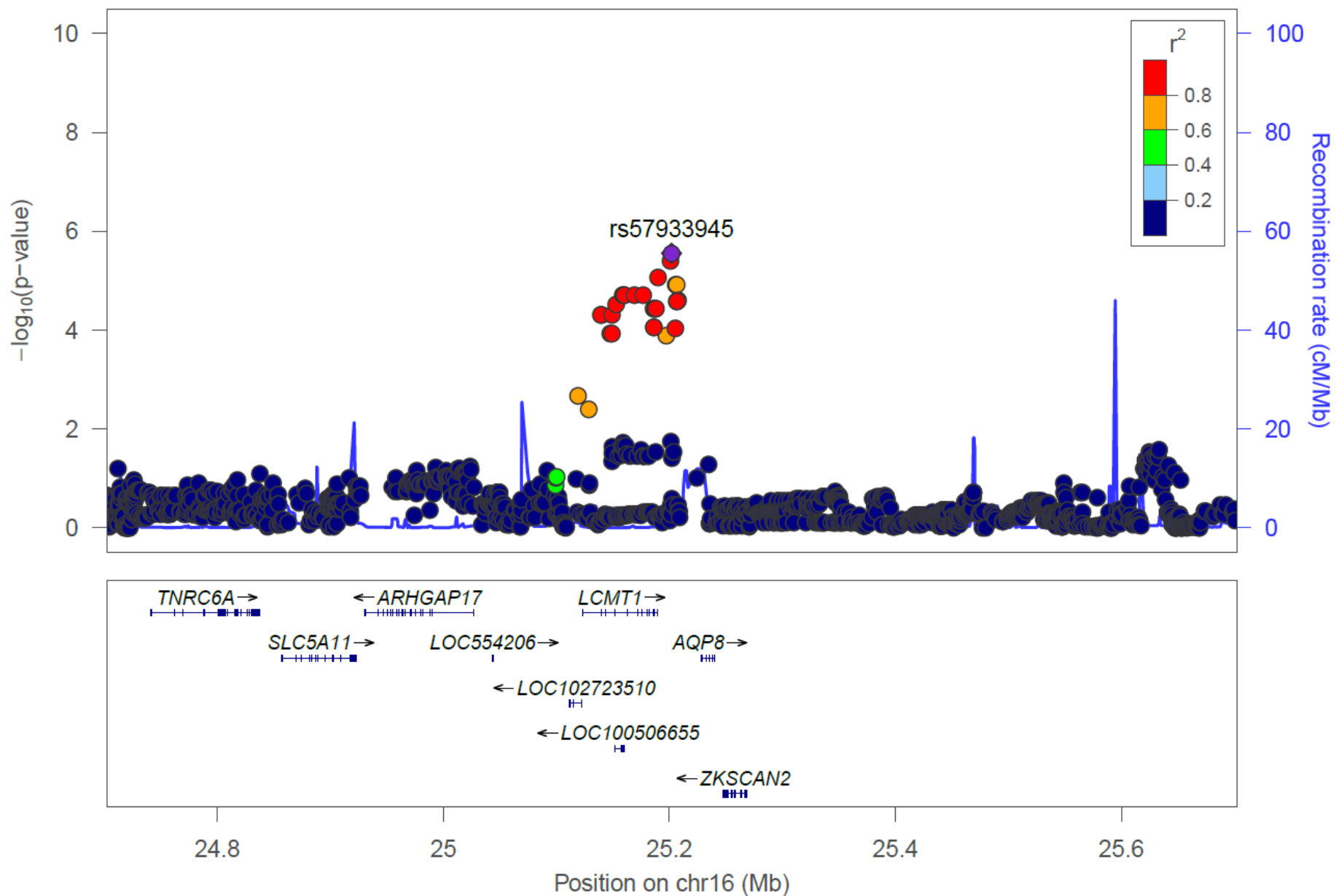
Supplemental Figure 6. Manhattan plots for CP meta-analysis of (A) Europeans and (B) Asians.



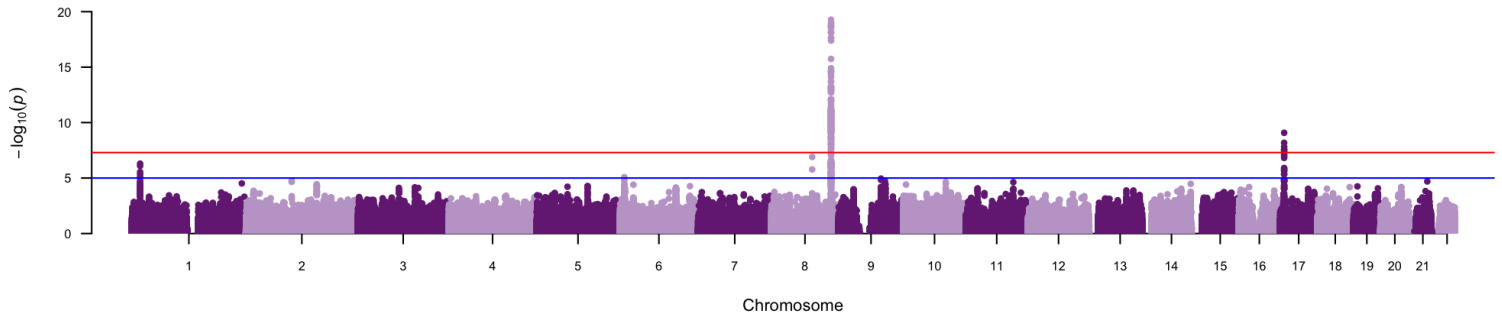
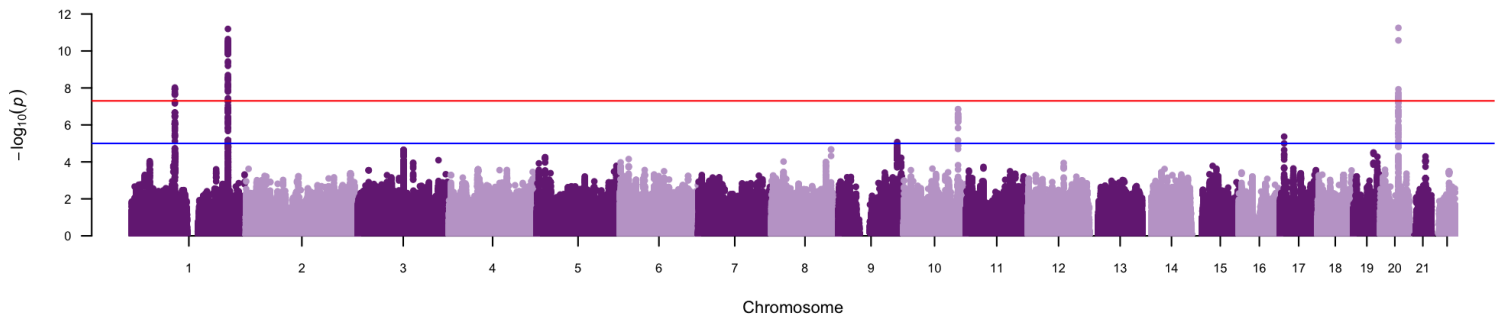
Supplemental Figure 7. Regional plot for 8q21 locus from Asian CP meta-analysis



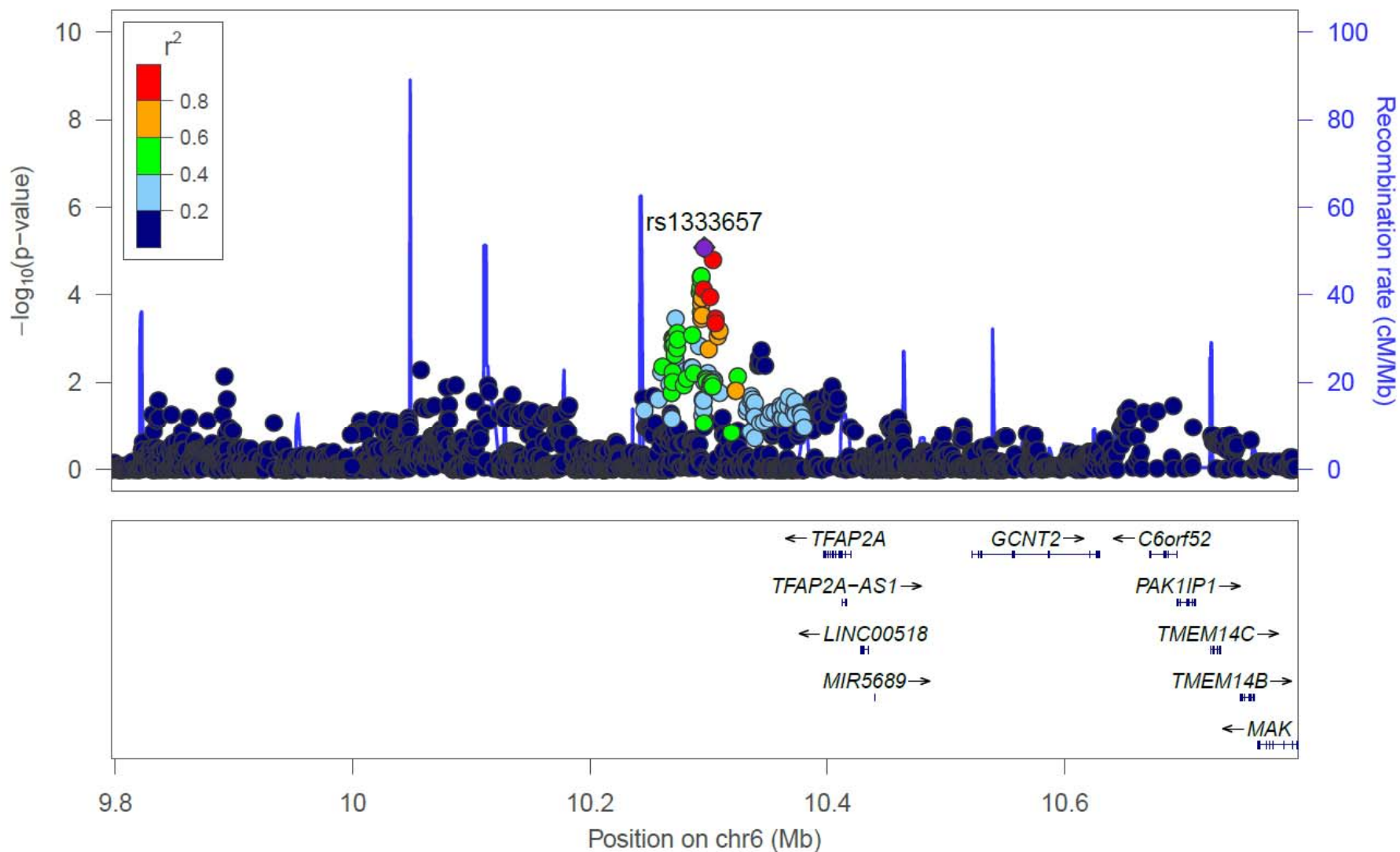
Supplemental Figure 8. Regional plot for 8q24.3 locus from Asian CP meta-analysis.



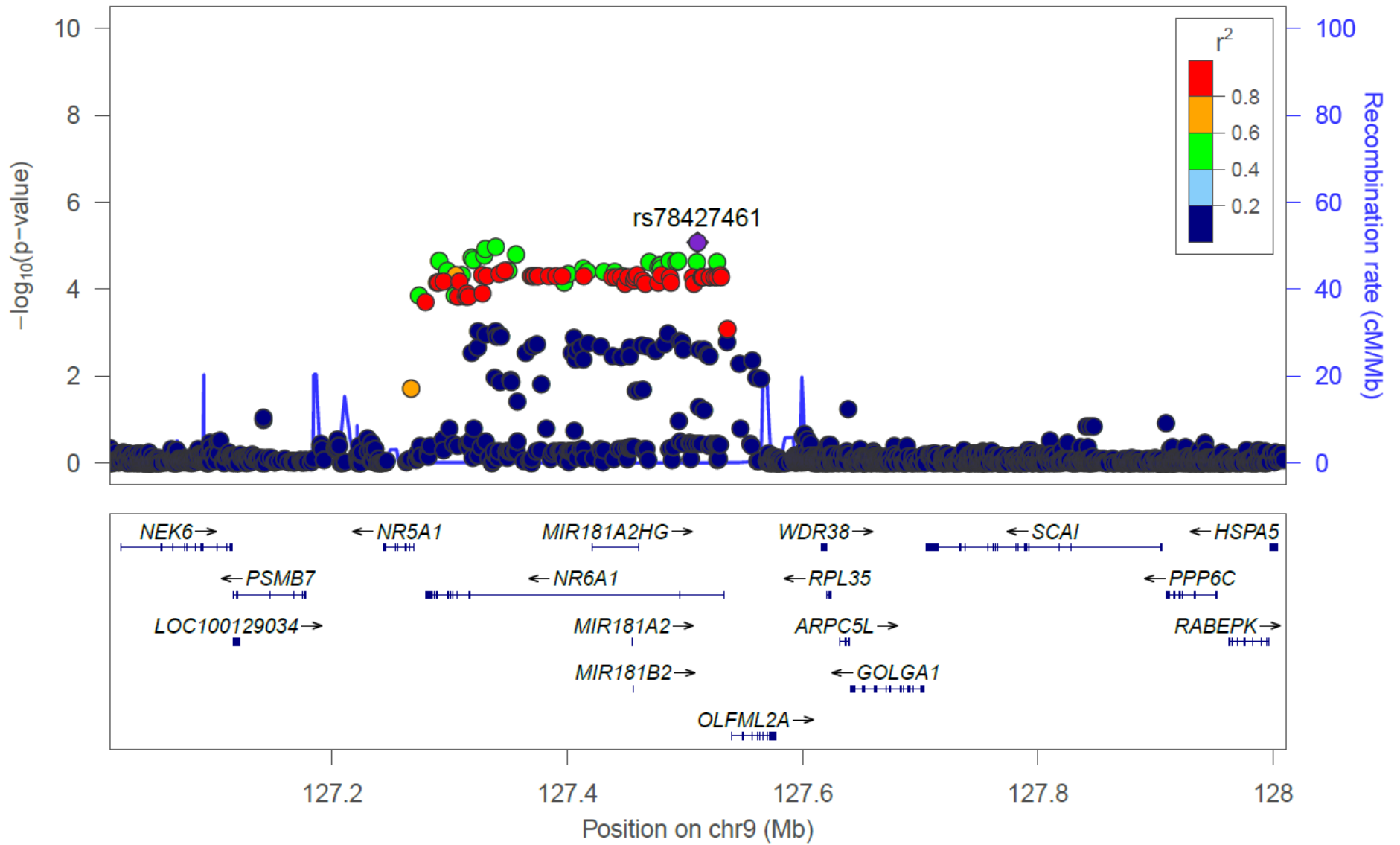
Supplemental Figure 9. Regional plot for 16p12.1 locus from Asian CP meta-analysis.

A**European All Clefts****B****Asian All Clefts**

Supplemental Figure 10. Manhattan plots for OFC (all clefts) meta-analysis of (A) Europeans and (B) Asians.



Supplemental Figure 11. Regional plot for 6p24.3 locus from European OFC meta-analysis.



Supplemental Figure 12. Regional plot for 9q33.3 locus from Asian OFC meta-analysis.