

Field deployability and ease of use of the CM-monitoring device

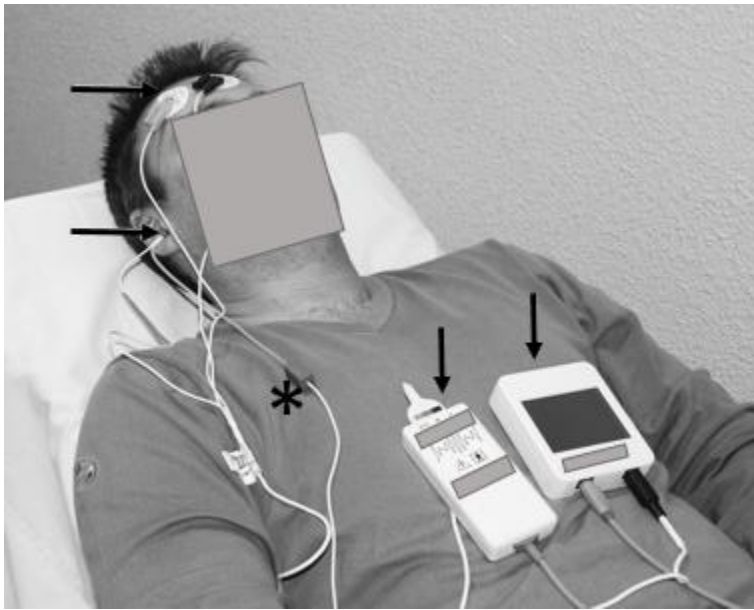


Fig. S1. CM-measuring device in situ. Picture of the setup in a non-medical environment (vertical arrows: CM-device, preamplifier; horizontal arrows: electrodes; *: earphone). The earphone is connected to the ear by a 30-cm long plastic tubing. Before starting CM data collection, this tubing can be clamped to attenuate the sound stimulus, which allows the operator to check the absence of electromagnetic artifact emitted by the earphone.