

*Monitoring of ICP in patients who stayed less than 4 days in NICU*

The following panels (A-O) display the time courses of ICP and CM phase in all the patients not shown in Fig.2 in the main text.

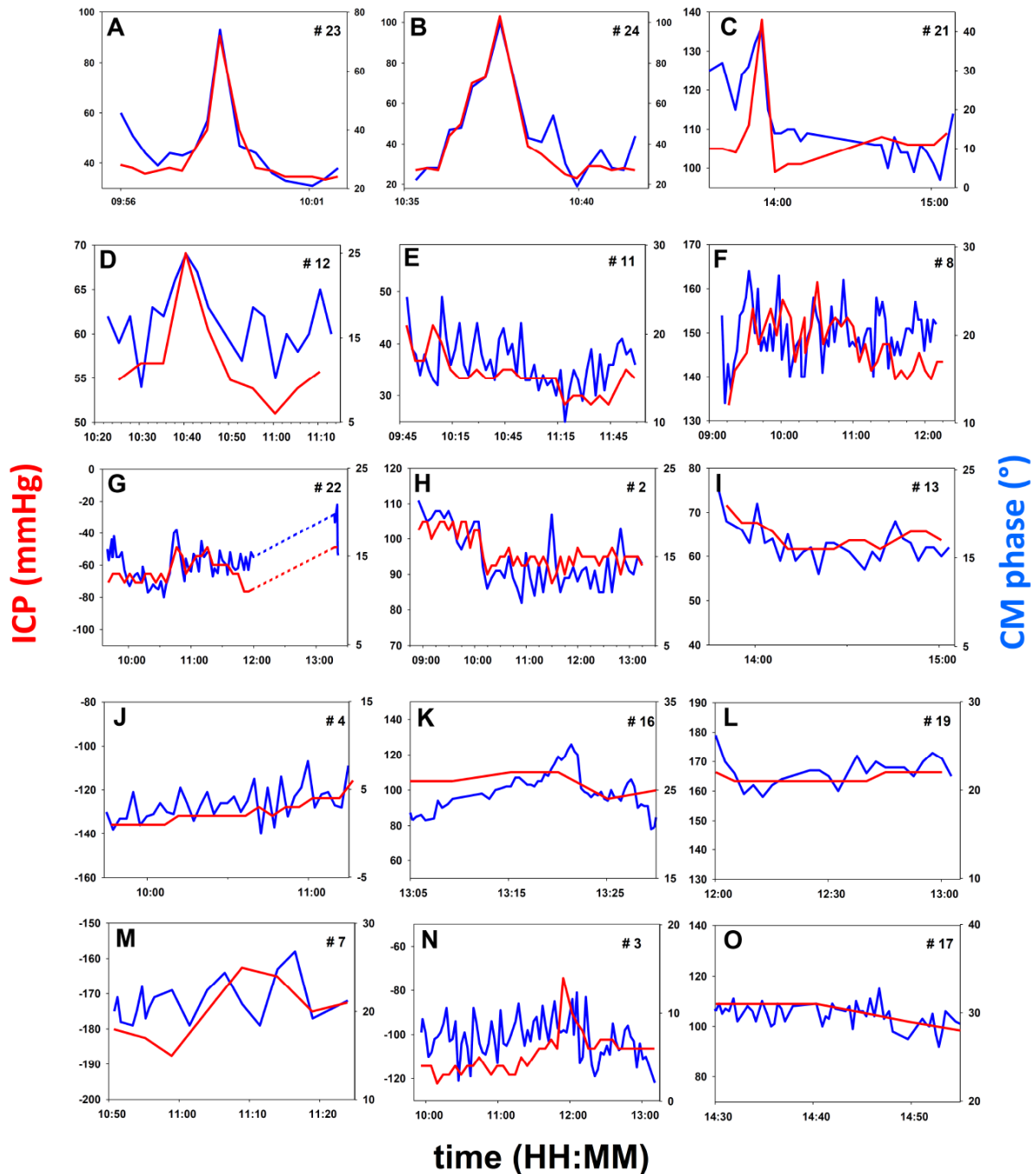


Fig.S3: ICP (red, in mmHg) and CM phase (blue, in degrees). Patient numbers (#n) match those in fig.1C, left column (main text). Diagrams A to L are sorted according to the size of ICP changes over the time course of monitoring, in descending order. In the lowest row (M-O), CM-to-ICP relationships do not reach significance.