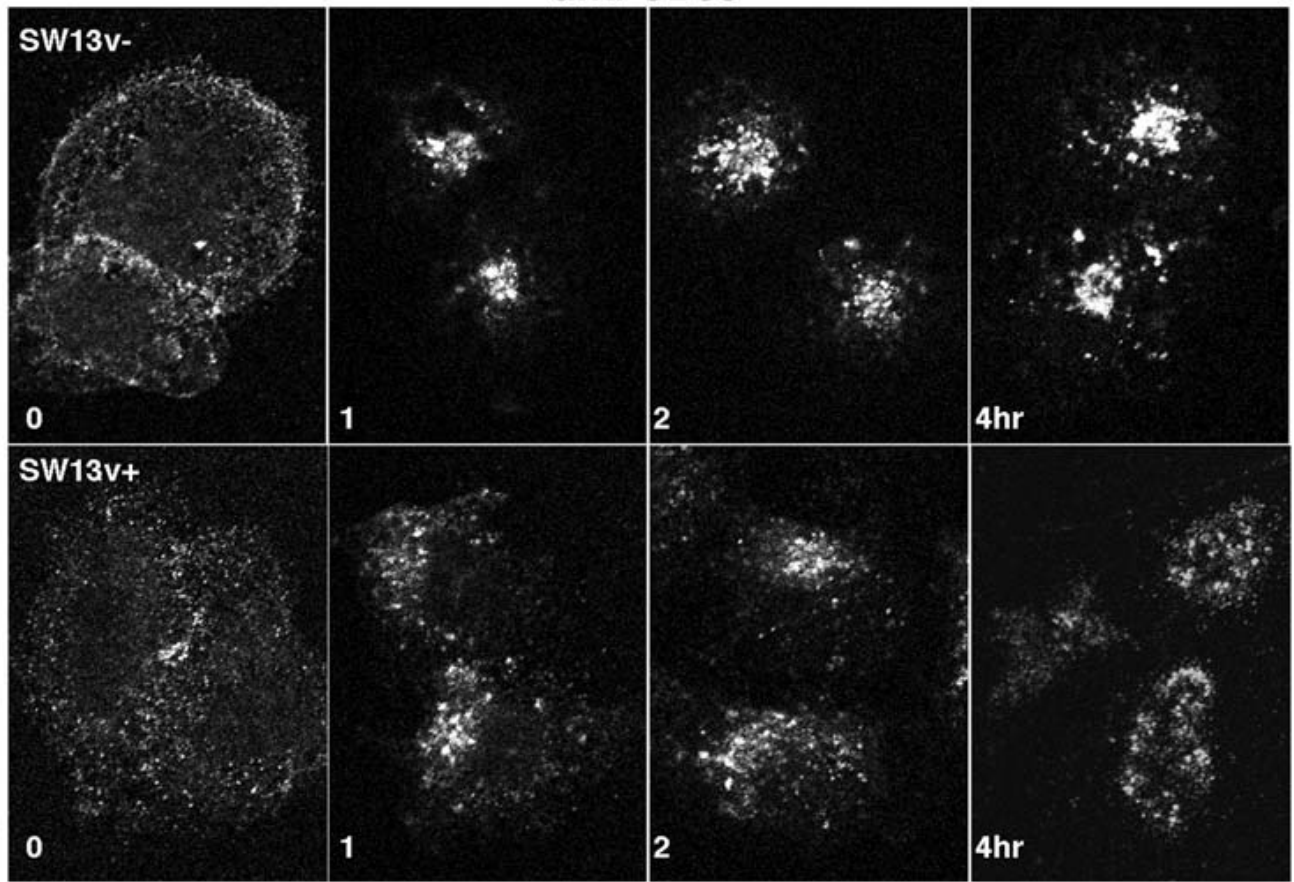
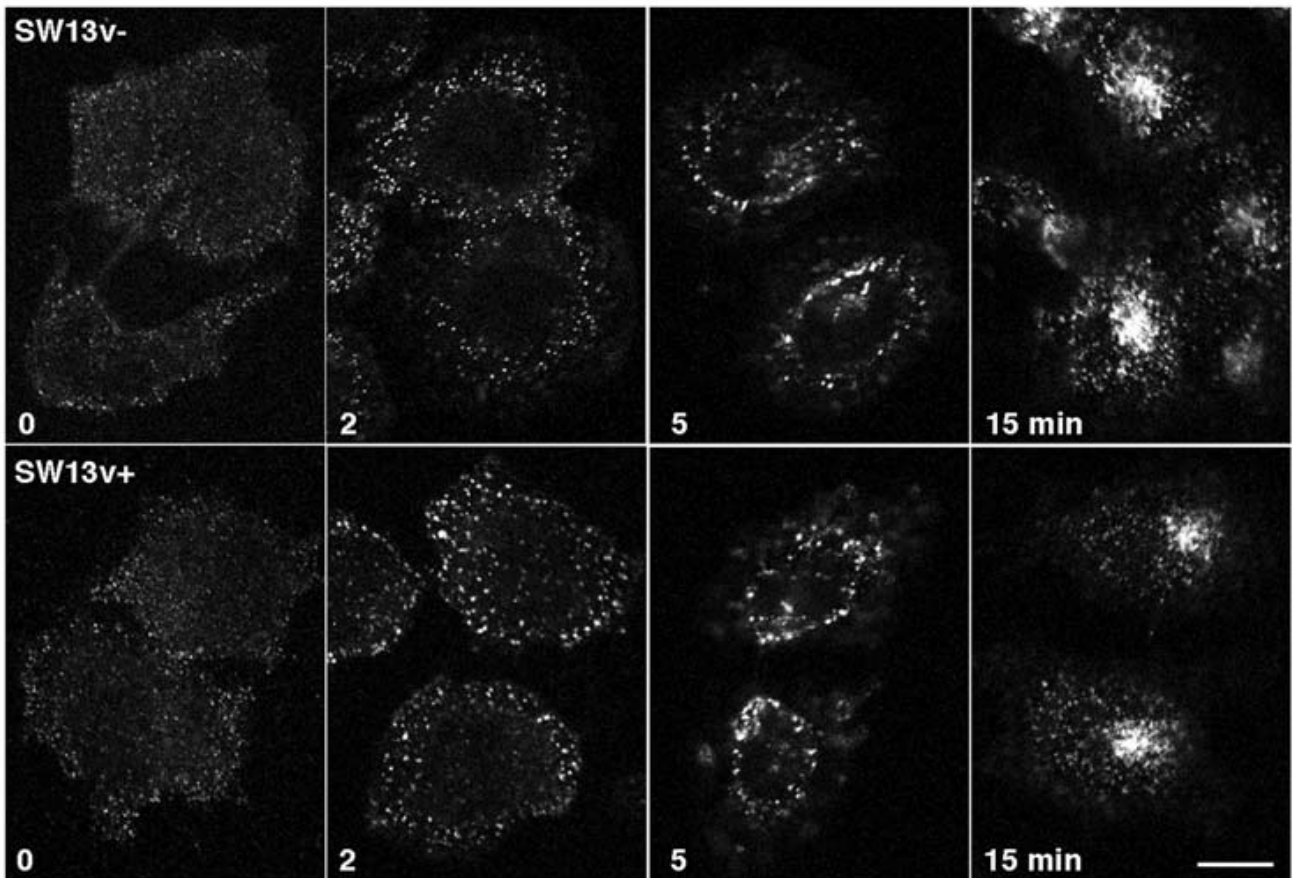


**a****anti-CD63****b****Alexa-Transferrin****Supplementary 1**

**Supplementary Figure 1. Mispositioned juxtannuclear lysosomes can be labeled endocytically using surface tracers.**

SW13 v- and v+ cells were surface labeled at 4°C with either antibodies against an extracellular epitope present in cd63 (a) or Alexa-conjugated transferrin (b). Unbound ligands were washed, and internalization was initiated at 37°C for 0-4 h. Internalization was stopped by washing and fixation at 4°C. Cells were imaged by confocal microscopy. CD63 antibodies internalized from the plasma membrane were concentrated around the nucleus in both cell types, yet in cells expressing vimentin, punctate cytoplasmic labeling was more prominent (a). However, internalization of labeled transferrin was indistinguishable between v- and v+ cells (b).