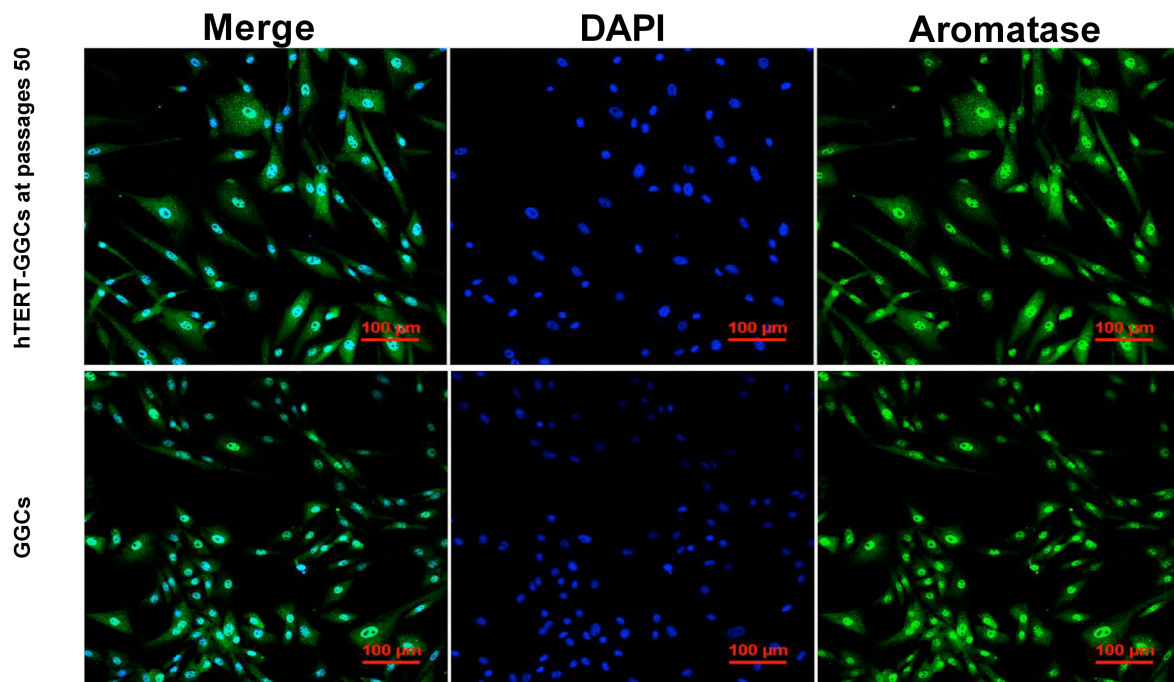
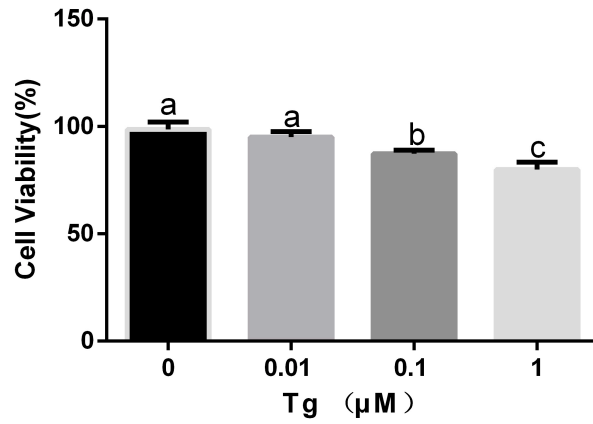


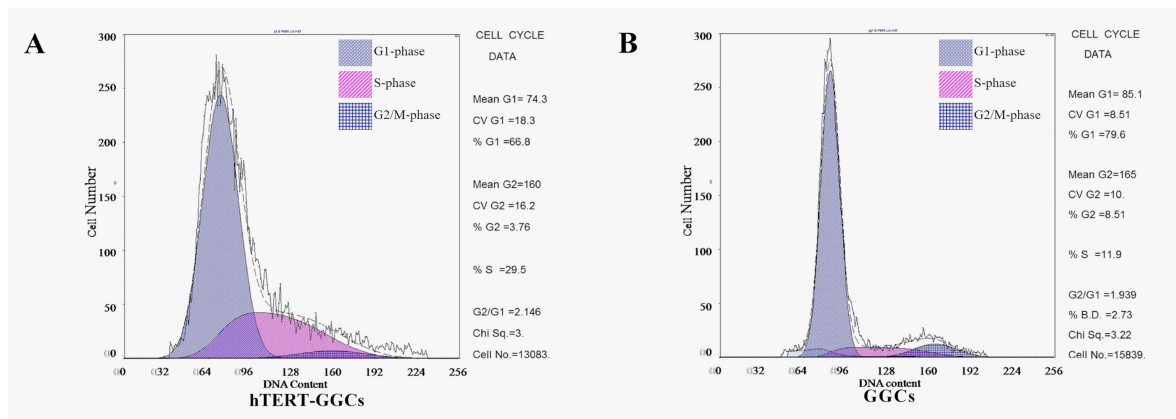
**Supplementary Fig. 1.** Constant levels of *GAPDH* in GGCs, hTERT-GGCs, and HeLa cells. Data presented are means  $\pm$  SEM of three independent experiments. Bars with different letters are significantly different ( $P < 0.05$ ).



**Supplementary Fig. 2.** Immunofluorescence detection of aromatase protein in GGCs and hTERT-GGCs. Immunofluorescence staining analysis of GGCs at passage 3 and hTERT-GGCs at passage 50 were performed using antibodies against aromatase. Bar = 10  $\mu\text{m}$ .



**Supplementary Fig. 3.** Tg treatment reduced cell viability in hTERT-GGCs. Cells were treated with 0, 0.01, 0.1, or 1 μM Tg for 12 h and then measured using the CCK-8 assay. Data presented are means ± SEM of three independent experiments.



**Supplementary Fig. 4.** Cell cycle distribution of GGCs at passage 7 and hTERT-GGCs at passage 50 as detected by flow cytometry. The solid line represents the actual sensed value generated by flow cytometry. The broken line represents the fitted values generated by the software.