

# Single CD28 stimulation induces stable and polyclonal expansion of human regulatory T cells

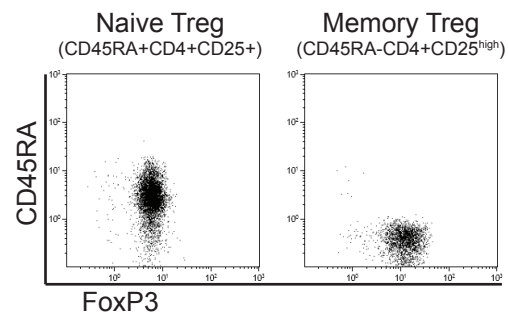
Xuehui He<sup>1,2</sup>, Ruben L. Smeets<sup>3</sup>, Esther van Rijssen<sup>1</sup>, Annemieke M.H. Boots<sup>4</sup>, Irma Joosten<sup>1</sup> and Hans J.P.M. Koenen<sup>1,\*</sup>

<sup>1</sup>Laboratory of Medical Immunology, Department of Laboratory Medicine, Radboud university medical center, Nijmegen, The Netherlands; <sup>2</sup>College of Computer Science, Qinghai Normal University, Xining, Qinghai, China; <sup>3</sup>Laboratory of Clinical Chemistry, Department of Laboratory Medicine, Radboud university medical center, Nijmegen, The Netherlands; <sup>4</sup>Department of Rheumatology and Clinical Immunology, University of Groningen, University Medical Center Groningen, Groningen, The Netherlands.

## ***Contact information for correspondence:***

\* Dr. Hans J.P.M. Koenen  
Department of Laboratory Medicine - Medical Immunology (route 469)  
Radboud university medical center  
Geert Grooteplein zuid 10  
Postbus 9101, 6500 HB Nijmegen  
The Netherlands  
Email: [hans.koenen@radboudumc.nl](mailto:hans.koenen@radboudumc.nl)

## Supplemental Figure S1



**Supplemental Figure S1: FOXP3 expression on freshly sorted human naïve and memory Treg.** Purified human CD4<sup>+</sup> T cells were stained with CD45RA and CD25. Thereafter, CD45RA<sup>+</sup>CD25<sup>+</sup> naïve Treg and CD45RA<sup>-</sup>CD25<sup>high</sup> memory Treg were FACS sorted. Subsequently, intracellular expression of FOXP3 was analysed in the sorted naïve and memory Treg by flow cytometry. Dotplots show a representative experiments of two individual experiments conducted with cells obtained from two different donors.