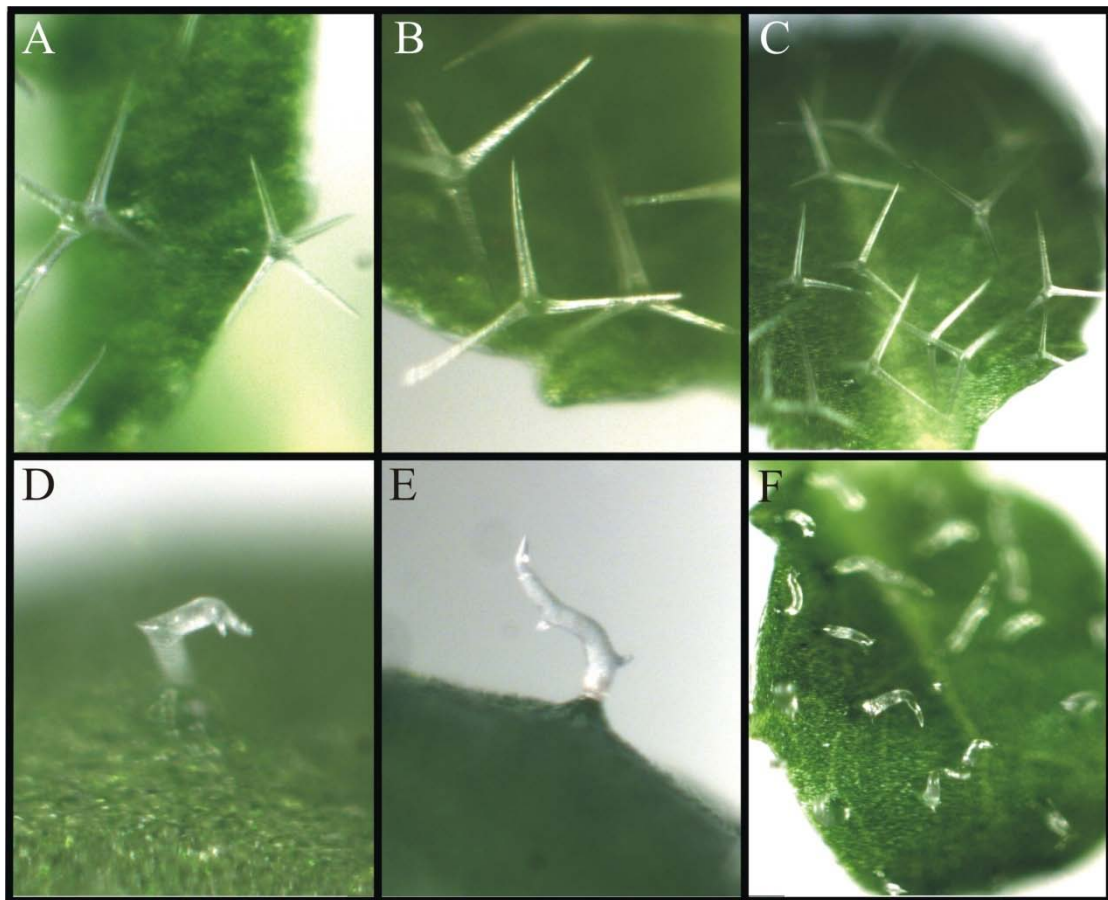
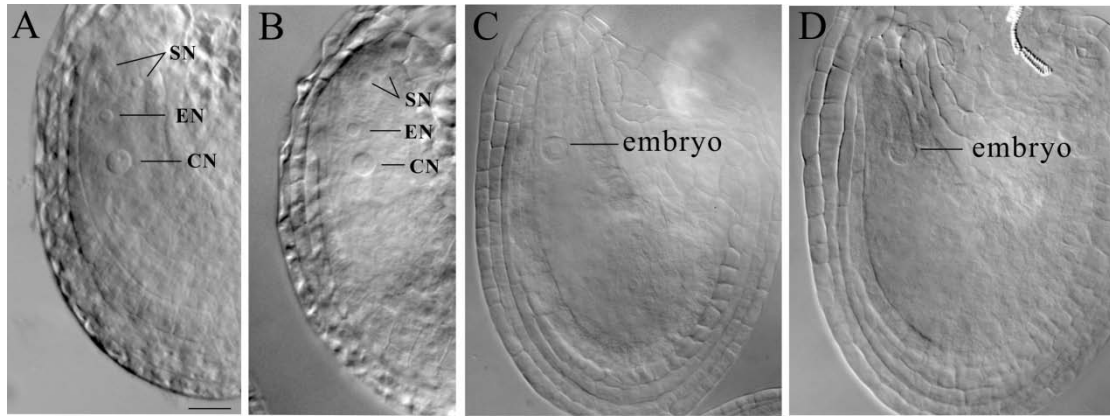


The WASP-Arp2/3 complex signal cascade is involved in actin-dependent sperm nuclei migration during double fertilization in tobacco and maize

Xiongbo Peng^{*}, Tingting Yan, Mengxiang Sun



Supp Fig1 Arp2/3 complex mutant plants show abnormal trichome.
A wide type; **B** *arp2/+* mutant; **C** *arp3/+* mutant;
D *arp2/arp2* mutant; **E** *arp3/arp3* mutant; **F** *arp2arp3double* mutant.



Supp Fig2 *arp2arp3* double mutant plants show normal female gametophyte and embryo development.

A wide type female gametophyte; **B** *arp2arp3* mutant female gametophyte; **C** wide type ovule one day after fertilization; **D** *arp2arp3* mutant ovule one day after fertilization. SN: synergid cell nucleus; EN: egg cell nucleus; CN: central cell nucleus.