

Supplementary Material for “CD4+ T-cell Epitope Prediction Using Antigen Processing Constraints”

Rangopal R. Mettu Tysheena Charles Samuel J. Landry

We provide the output of our algorithm below for each of the datasets tested (see Table 1 for references). For each dataset we give the residue-level aggregate z-score (at left) with experimental epitopes indicated by vertical green shaded bars. Our stability-based epitope likelihood score (titled “Stability”) is given in order of the mapped peptides (experimental epitopes indicated by vertical black lines). Below this plot we also show stability-based scores in rank-order (titled “Rank”), with 90th and 80th percentiles (indicated by red dashed lines). Where applicable we also show the corresponding plots for MHC binding-based scores.

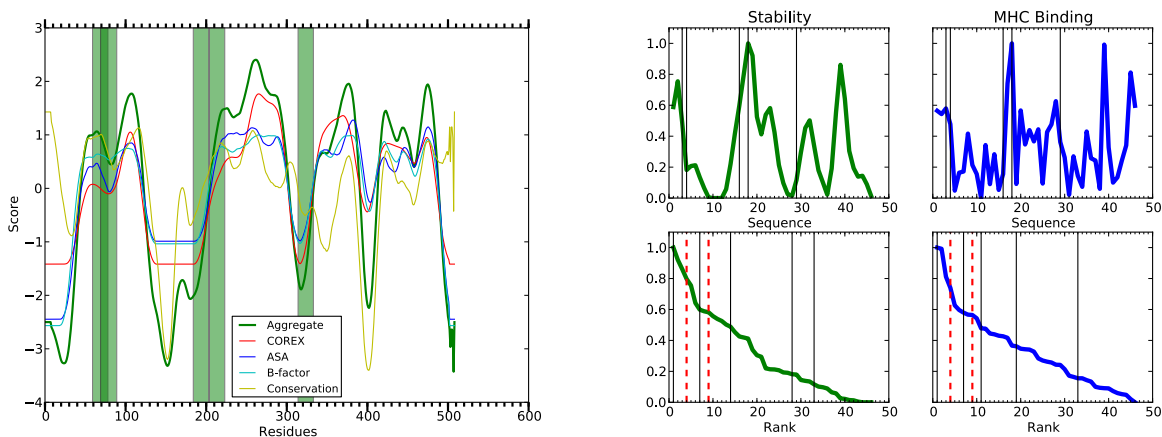


Figure S1: HIV gp120 (JRFL)

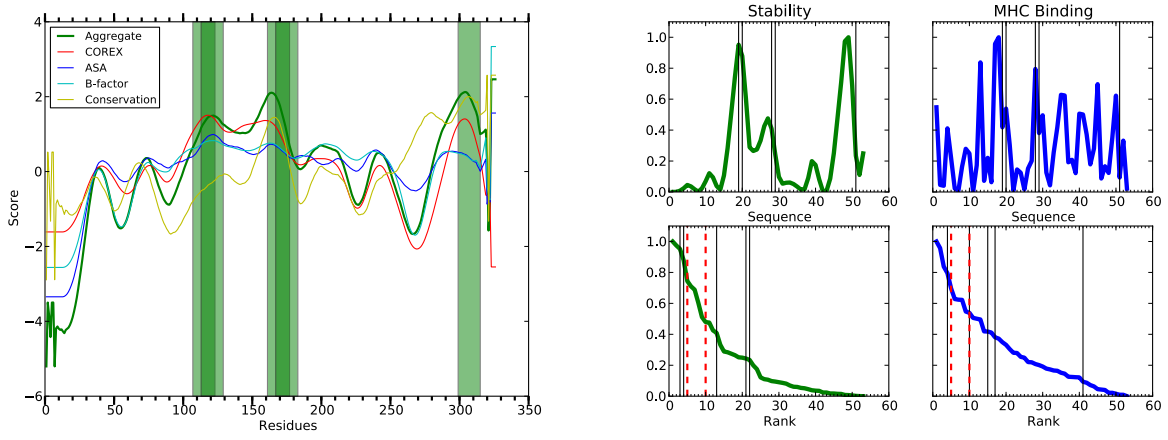


Figure S2: *Yersinia pestis* LcrV

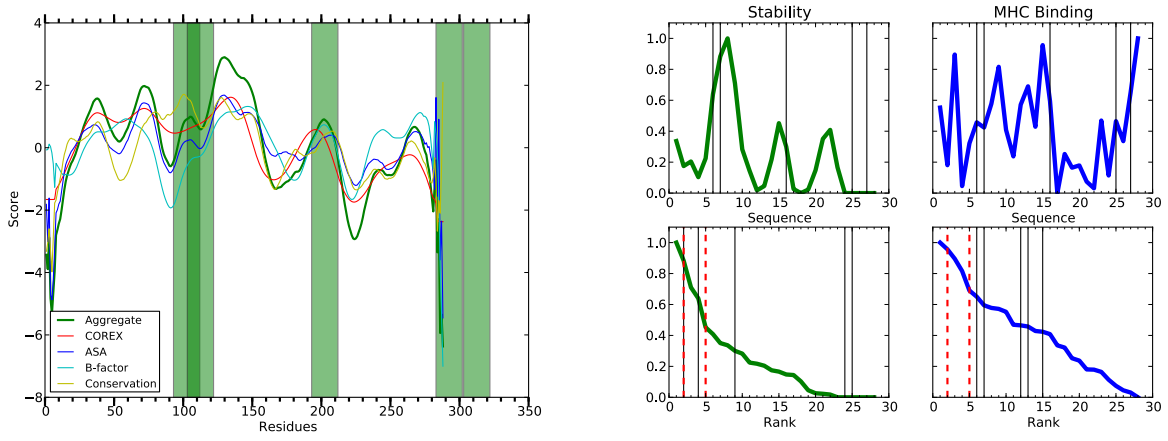


Figure S3: Tuberculosis Ag85A

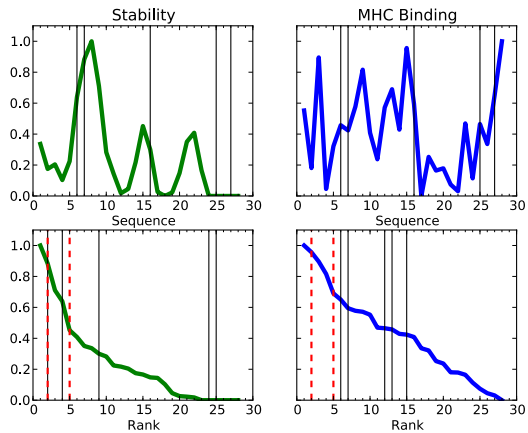
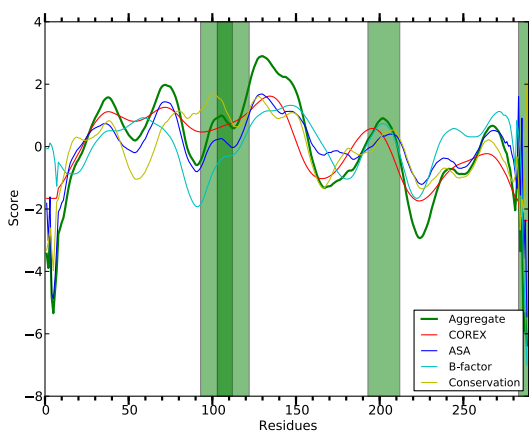


Figure S4: Tuberculosis antigen 88

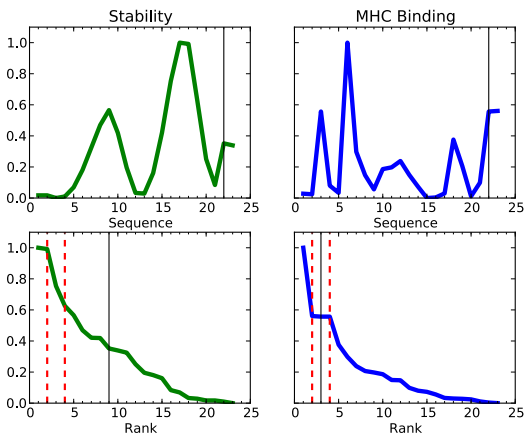
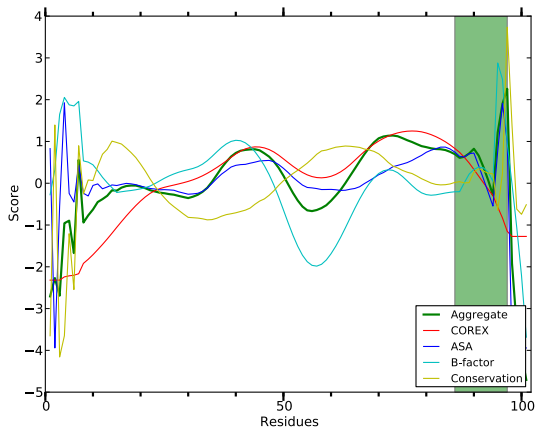


Figure S5: Cholera toxin B

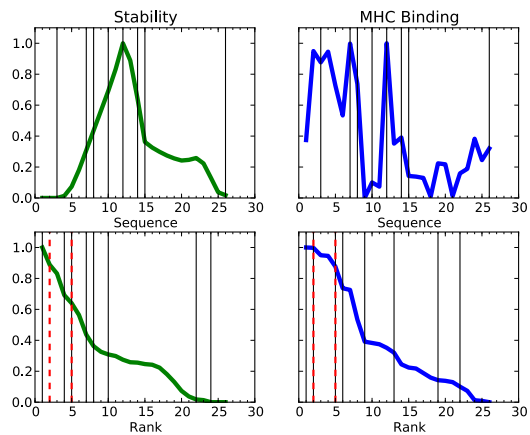
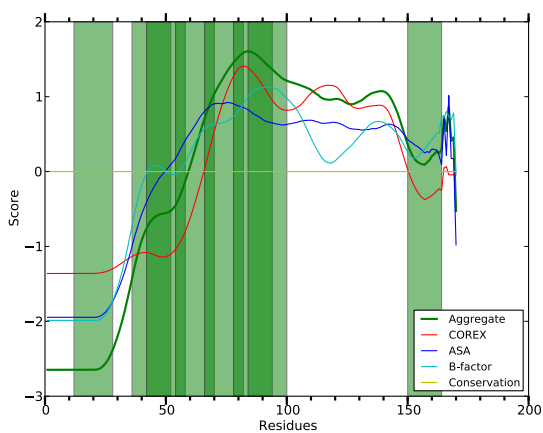


Figure S6: *Y. pestis* CAF1

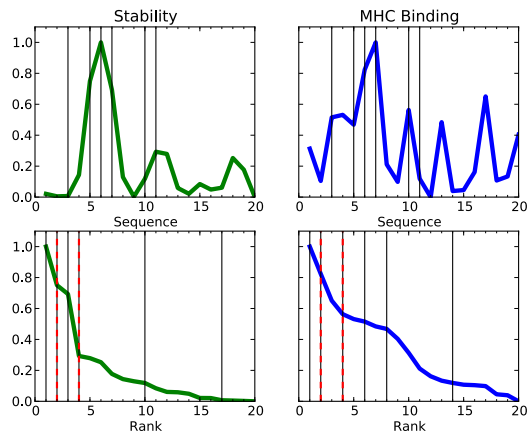
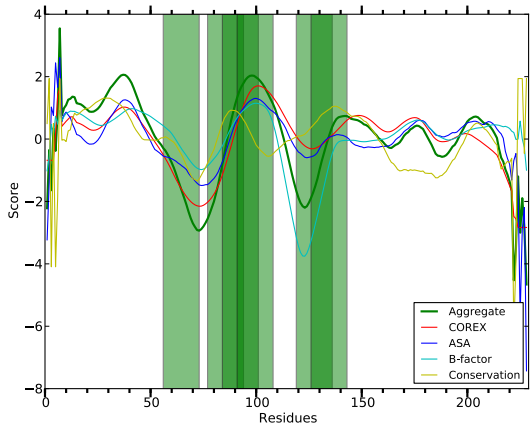


Figure S7: Friend virus env

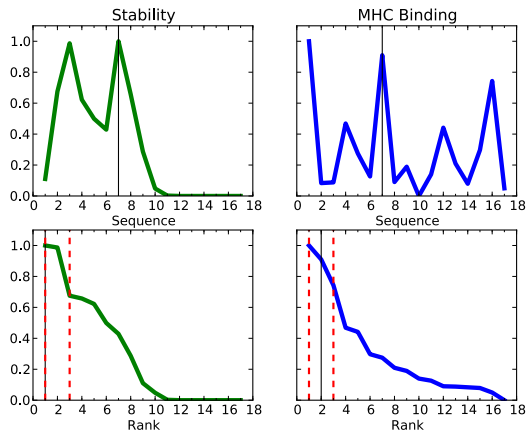
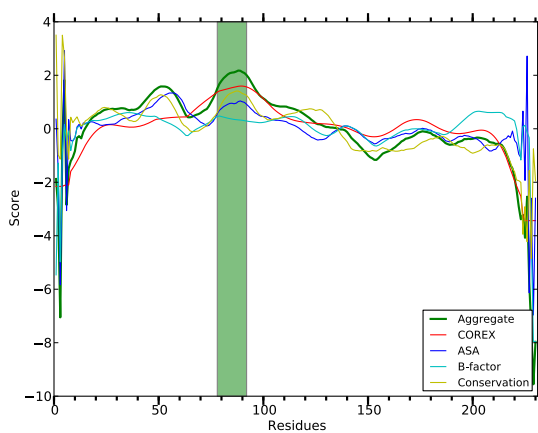


Figure S8: GFP

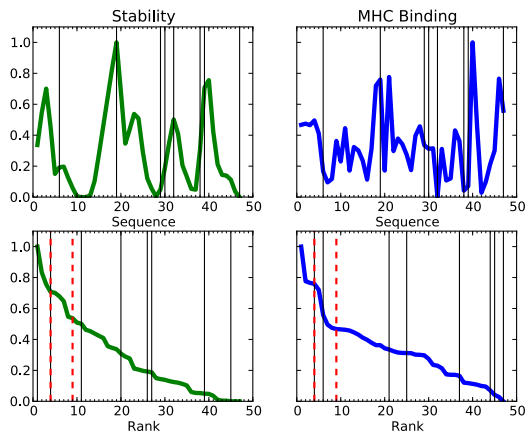
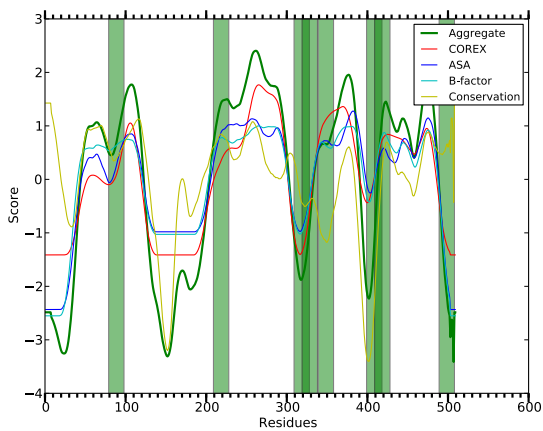


Figure S9: HIV gp120 (89.6)

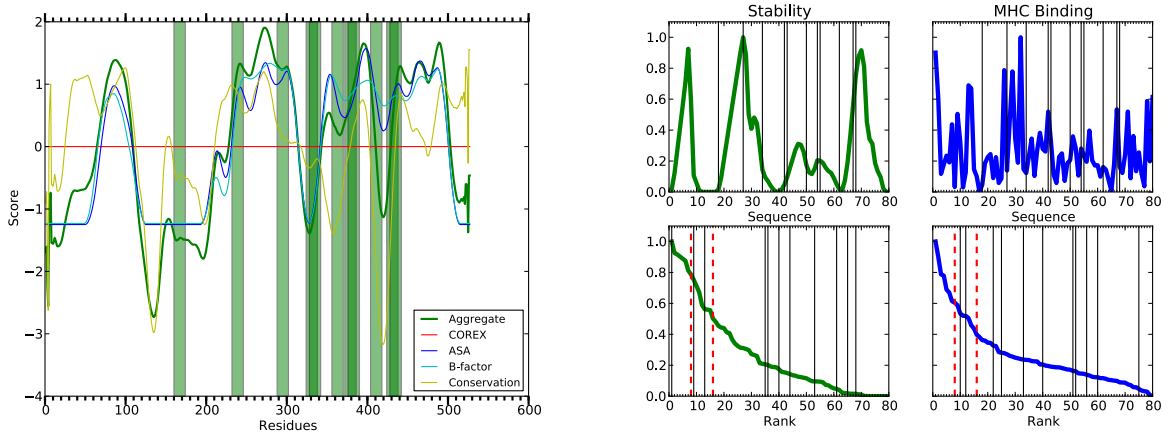


Figure S10: SIV gp120

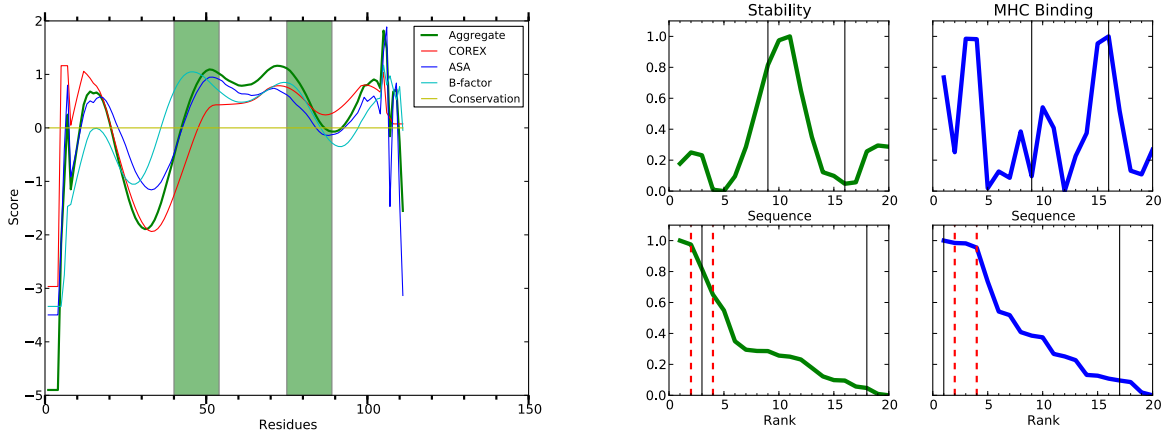


Figure S11: Bacteriophage T4 HSP10

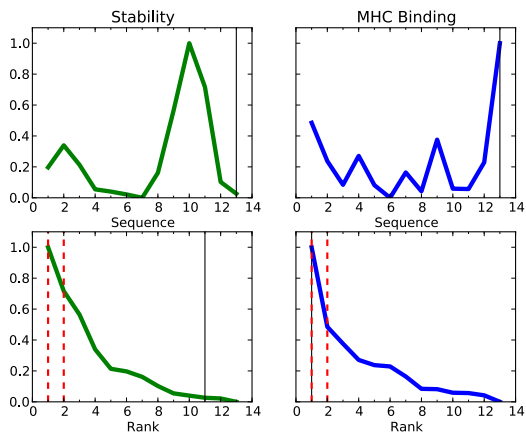
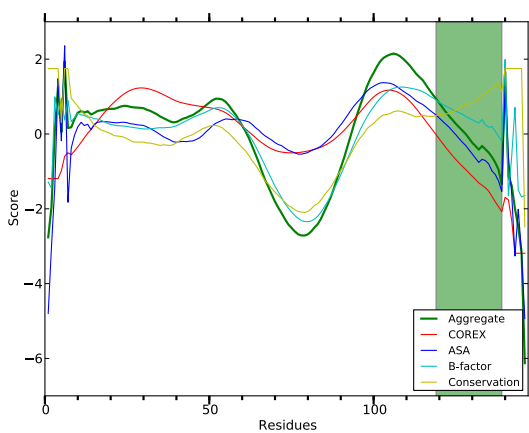


Figure S12: Hepatitis B virus

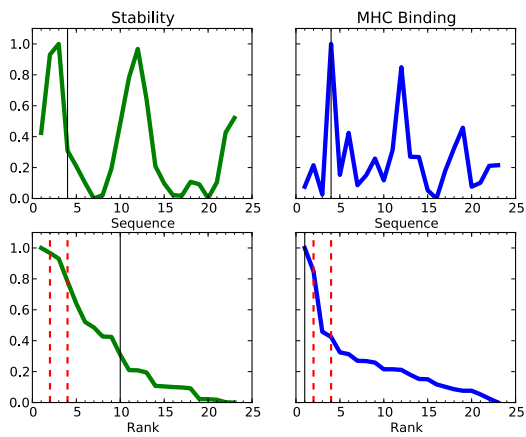
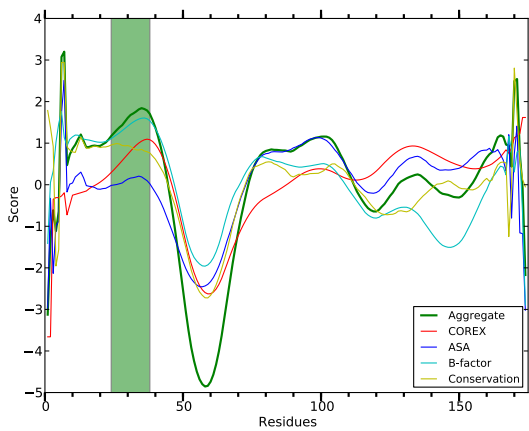


Figure S13: HRSV M2-1

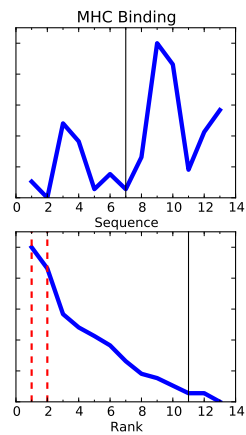
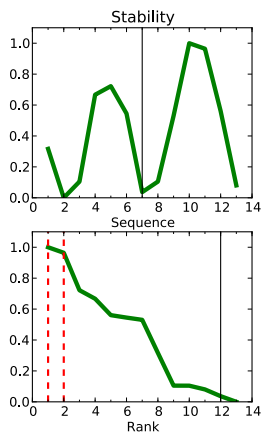
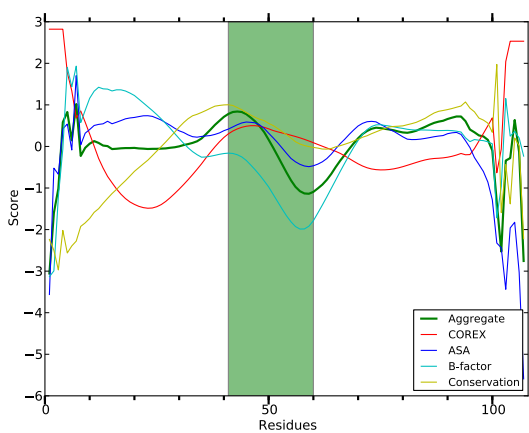


Figure S14: HSP 16

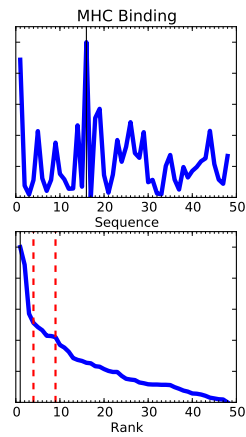
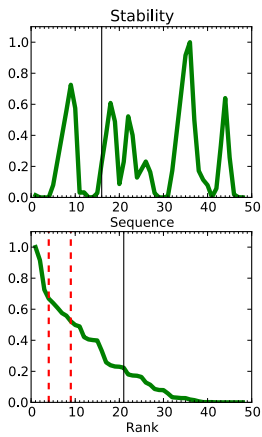
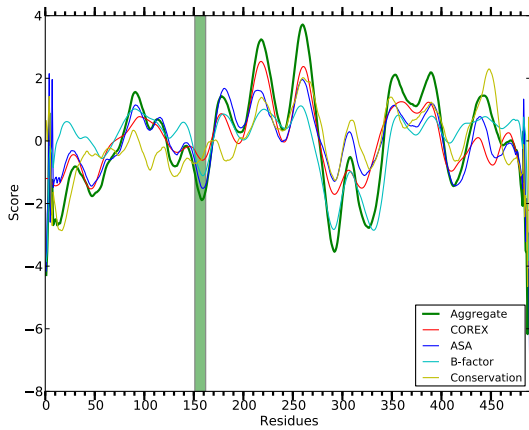


Figure S15: Listerialysin O

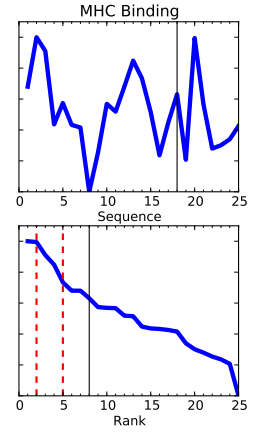
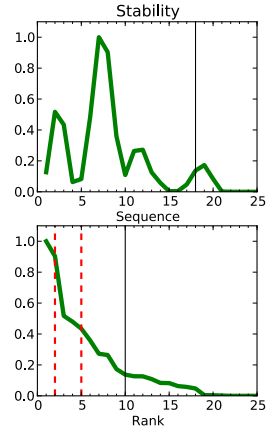
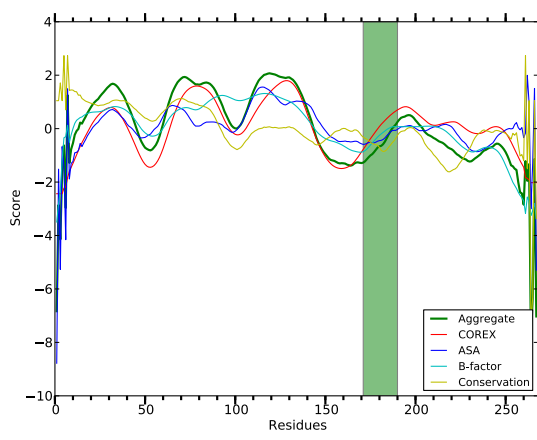


Figure S16: Tuberculosis MPT51

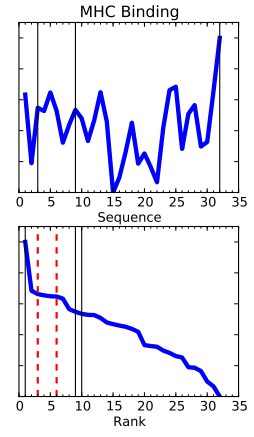
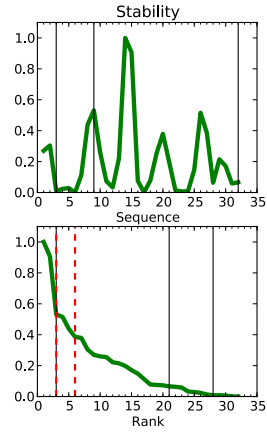
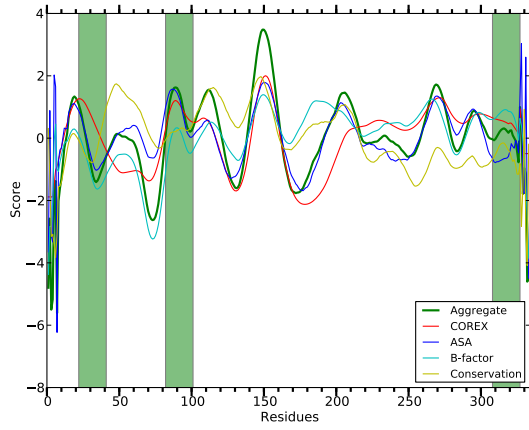


Figure S17: Tuberculosis PstS

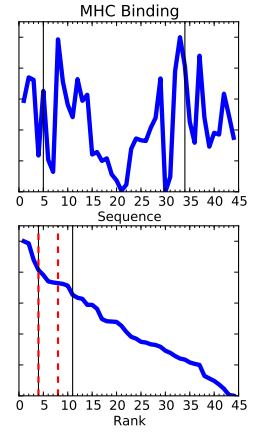
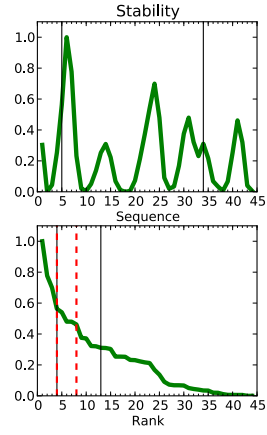
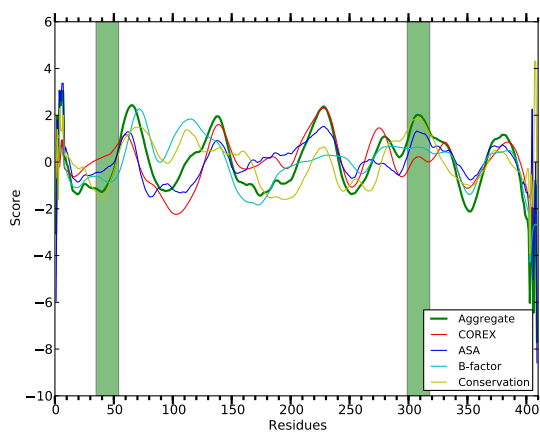


Figure S18: VSV glycoprotein

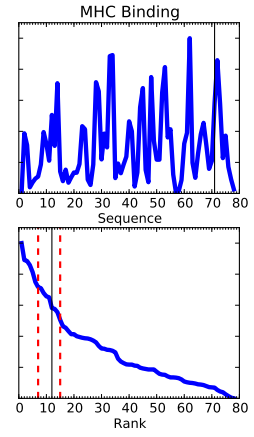
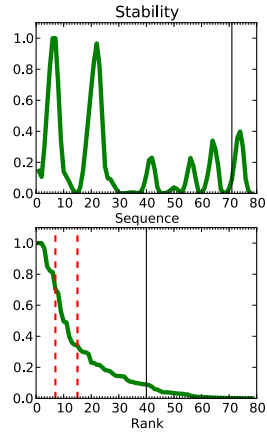
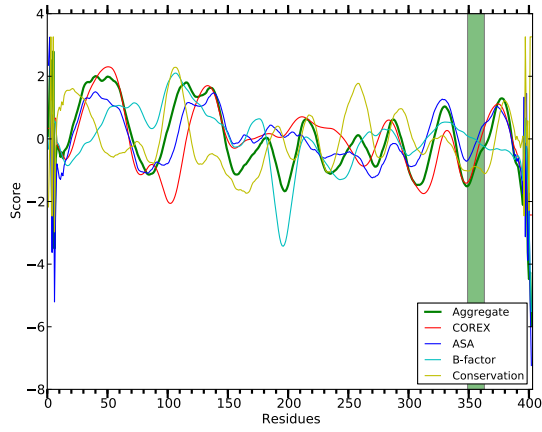


Figure S19: West Nile virus env

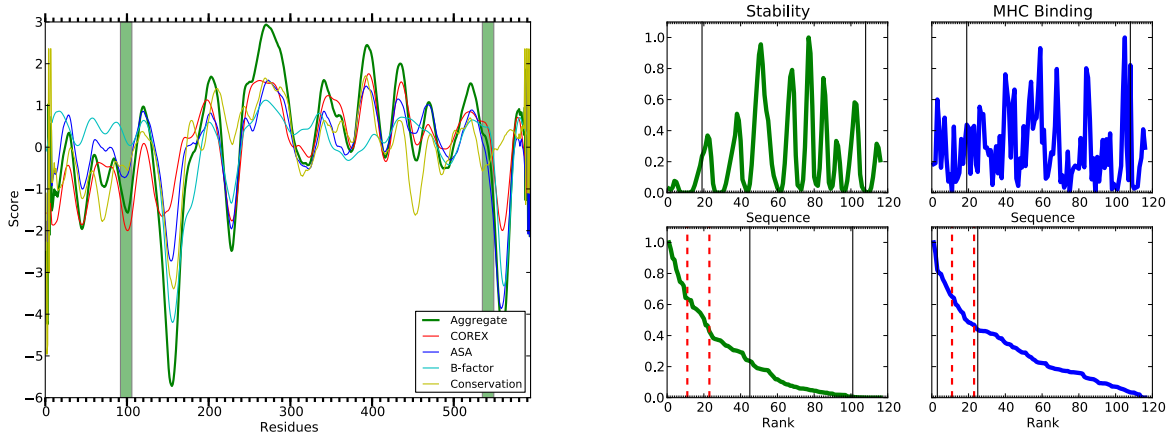


Figure S20: West Nile virus ns3

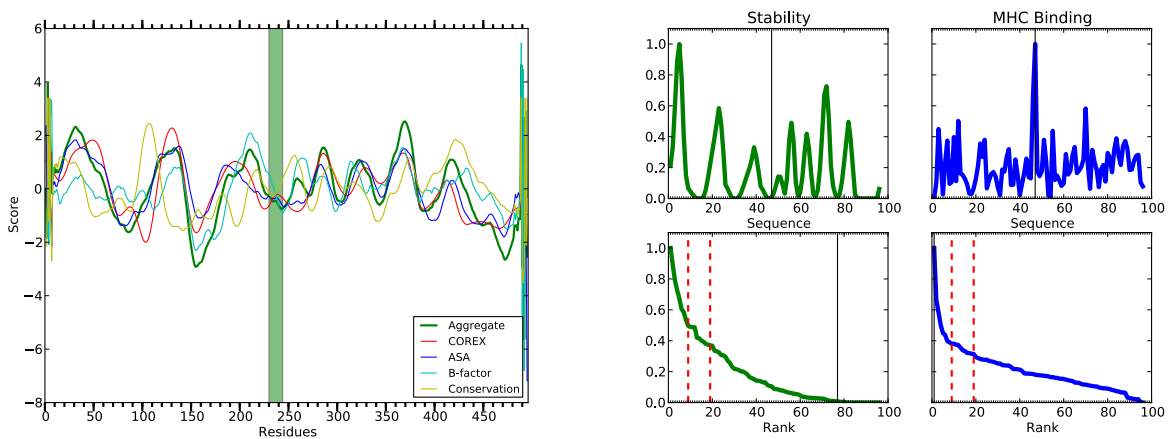


Figure S21: Yellow Fever env

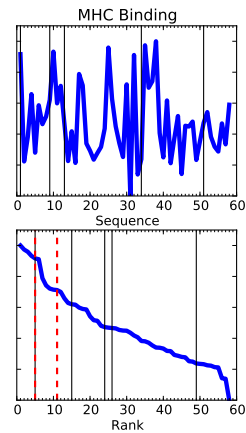
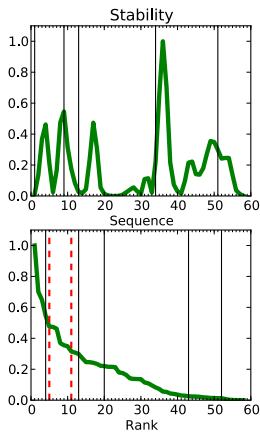
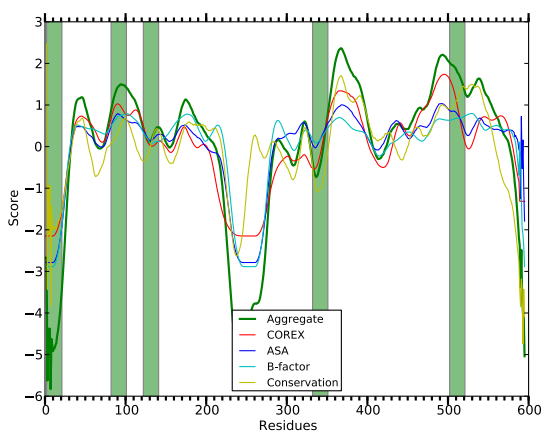


Figure S22: Chlamydia CPAF

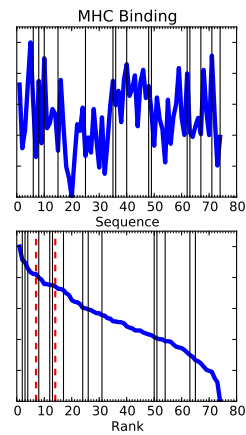
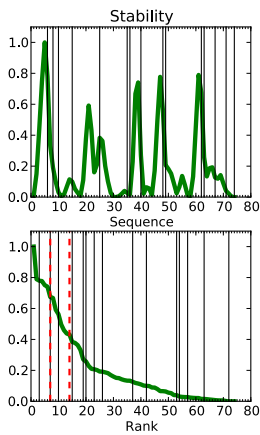
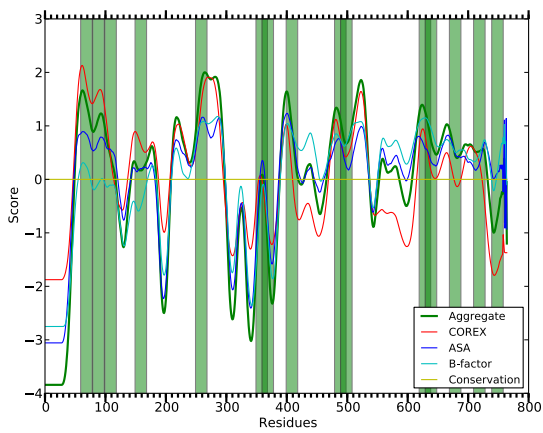


Figure S23: Anthrax protective antigen

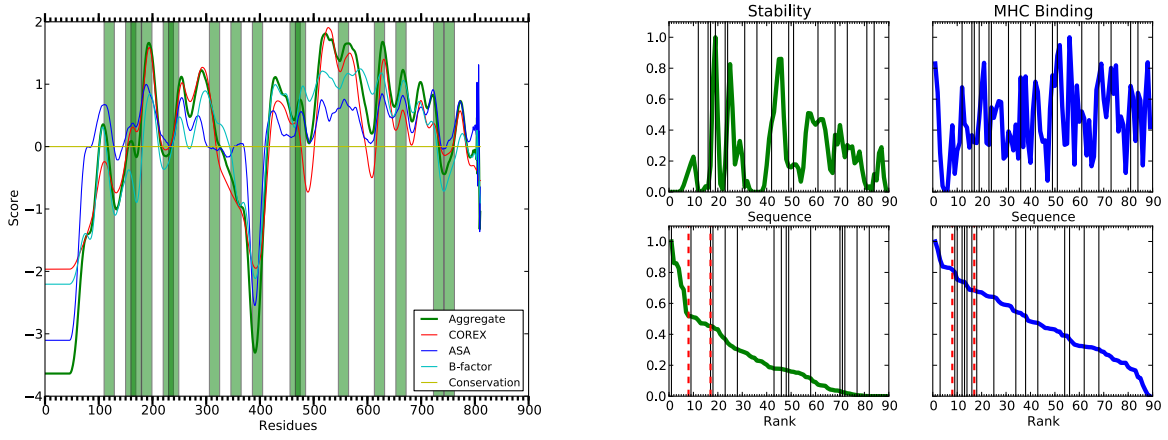


Figure S24: Anthrax lethal factor

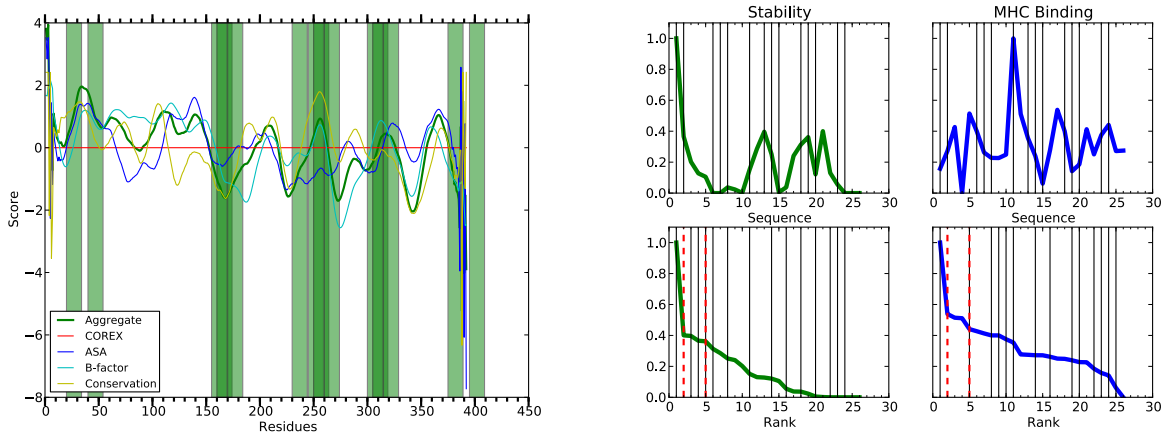


Figure S25: Dengue env

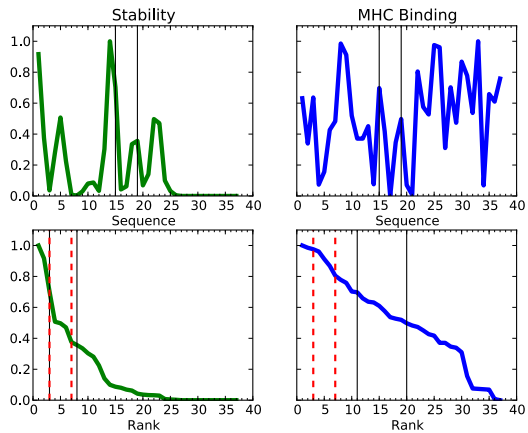
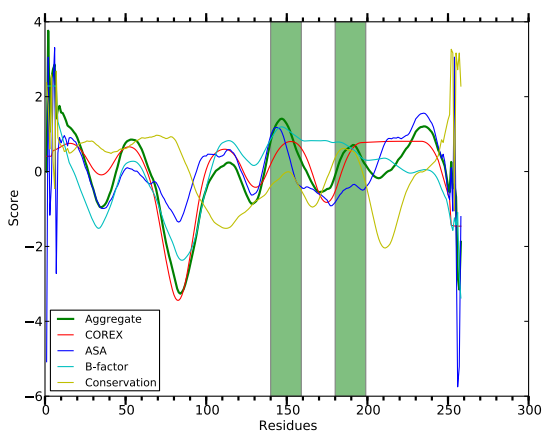


Figure S26: Burkholderia flagellin

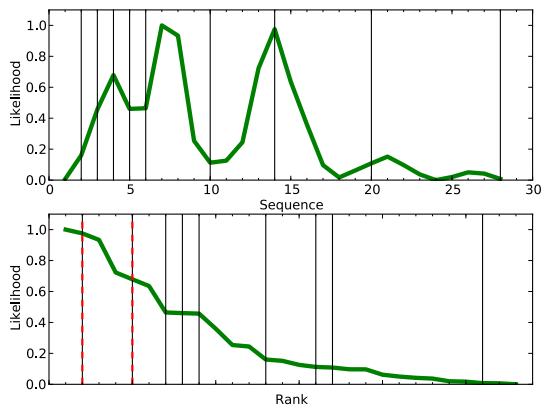
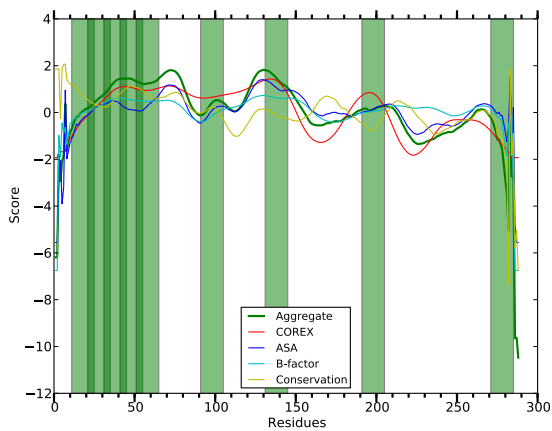


Figure S27: Tuberculosis Ag85B

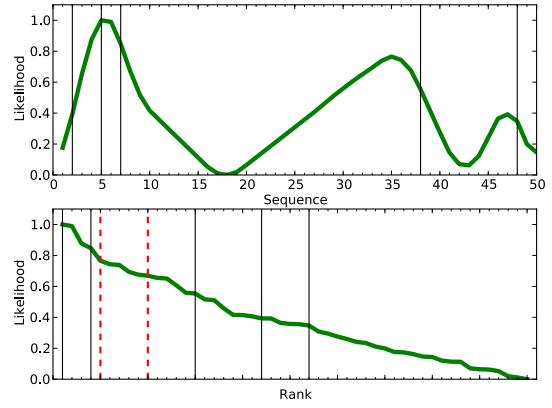
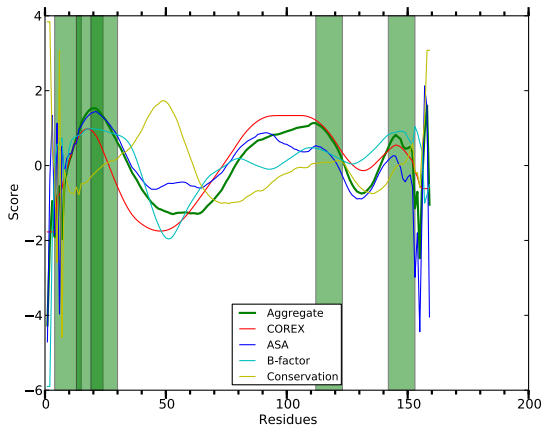


Figure S28: Birch pollen Bet v 1

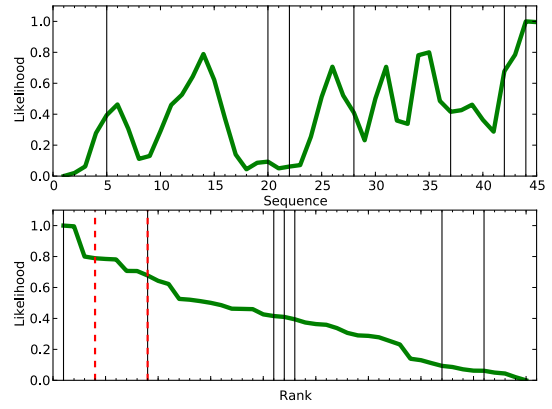
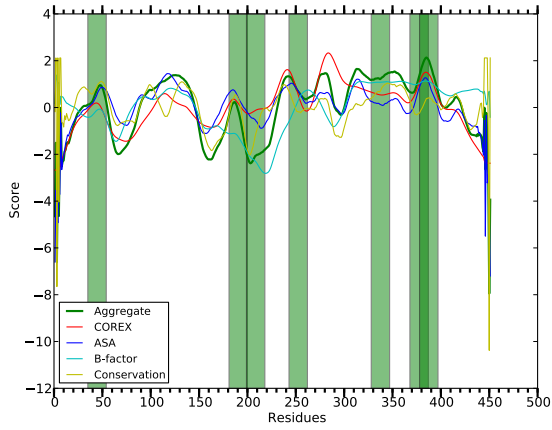


Figure S29: Hepatitis C ns3

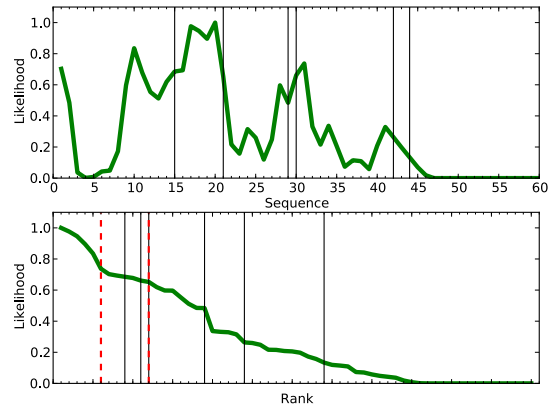
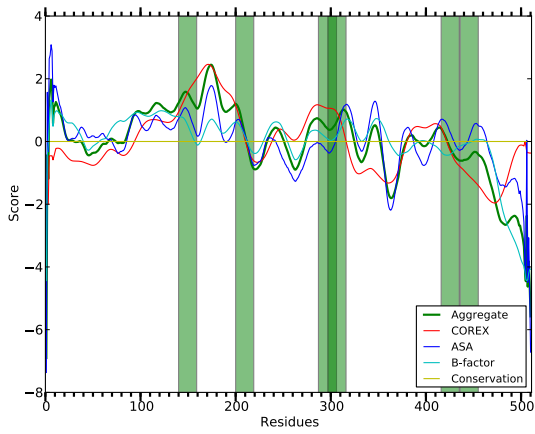


Figure S30: *M. leprae* HSP70

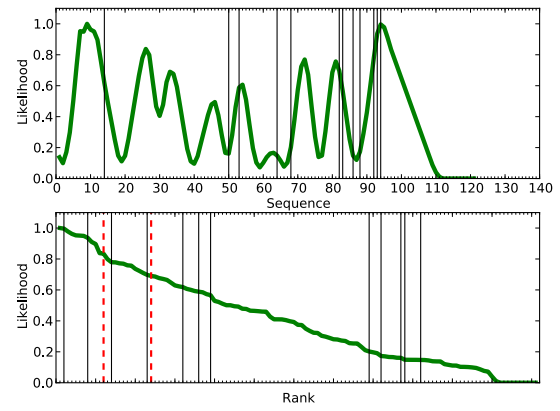
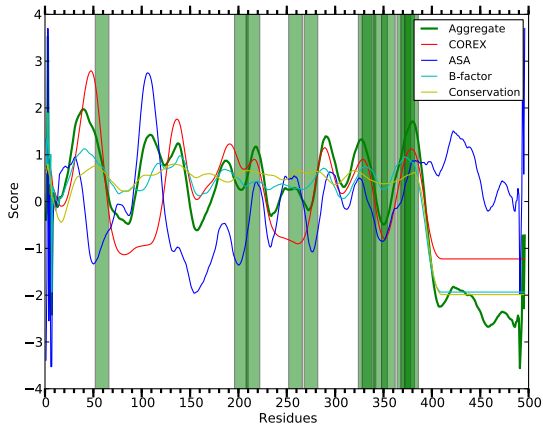


Figure S31: Tick-borne encephalitis protein E

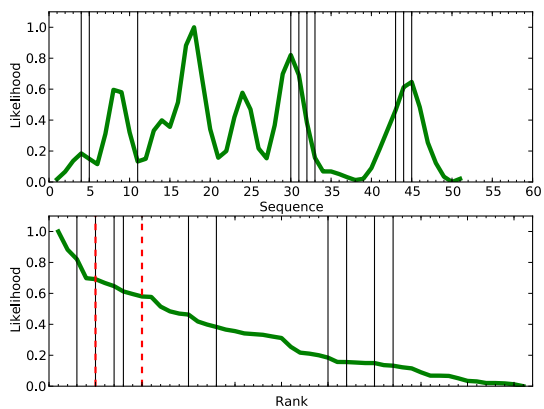
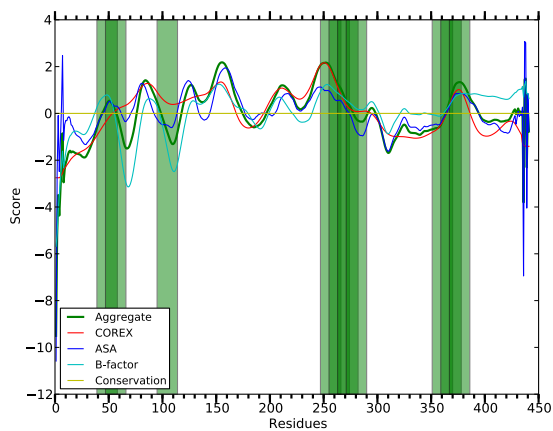


Figure S32: Tetanus toxoid

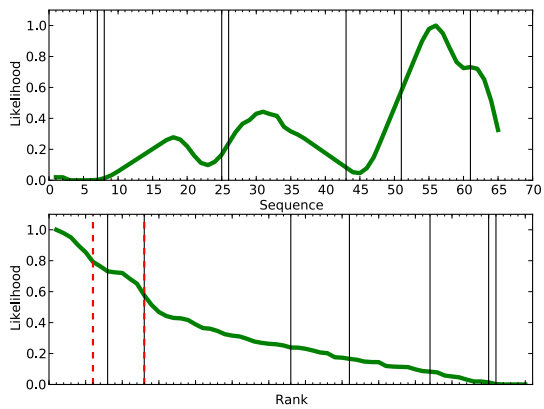
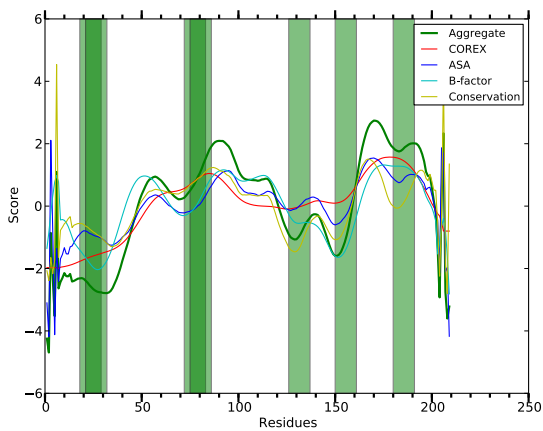


Figure S33: Wasp Ves v 1

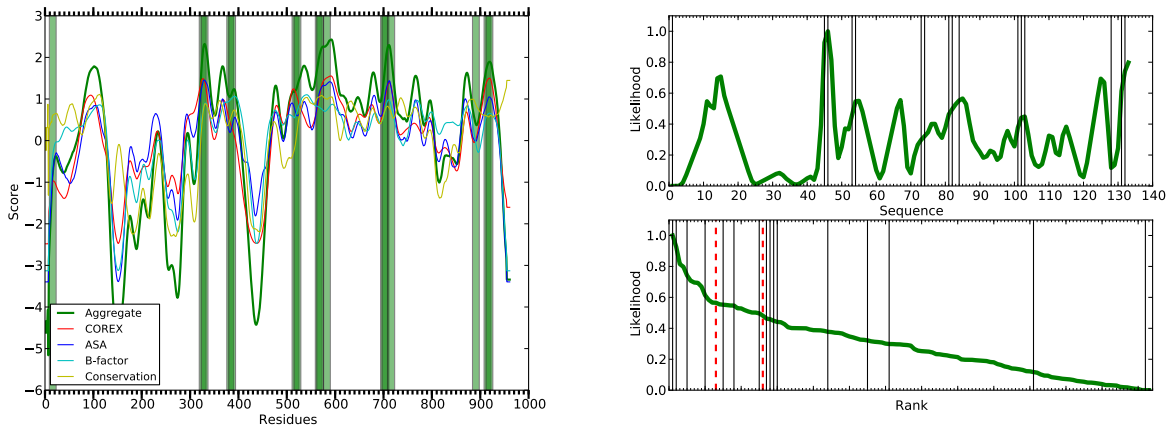


Figure S34: Adenovirus serotype 5 hexon

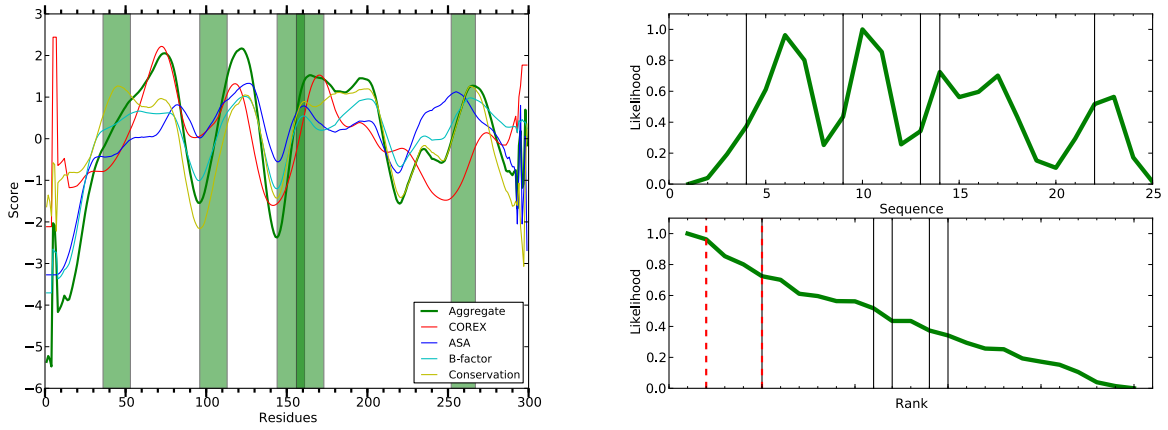


Figure S35: Polio vp1