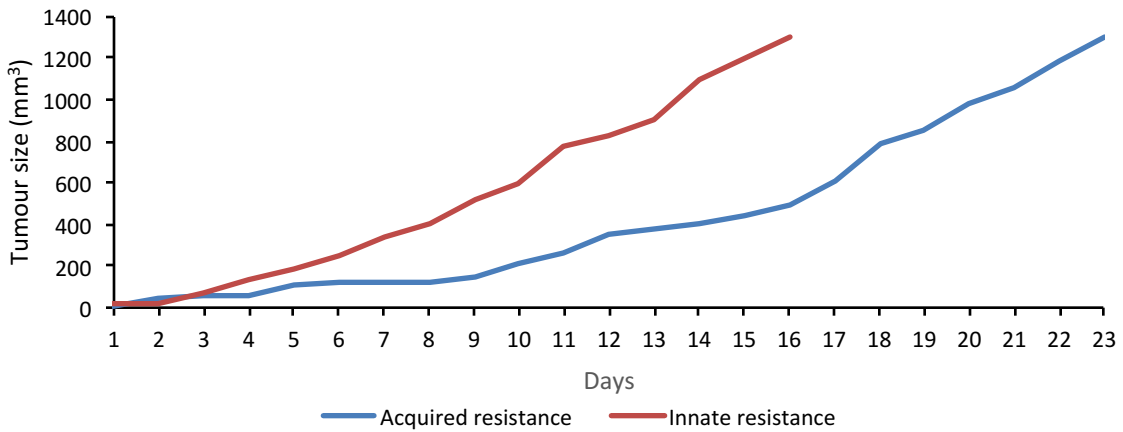


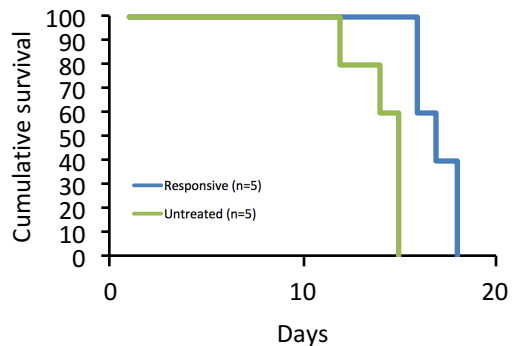
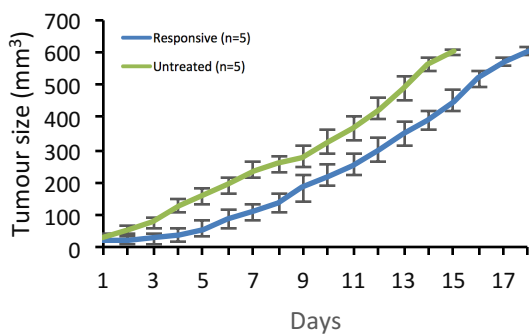
## Seeding tumour growth curves

A

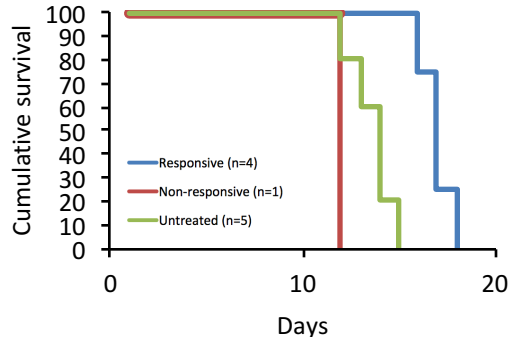
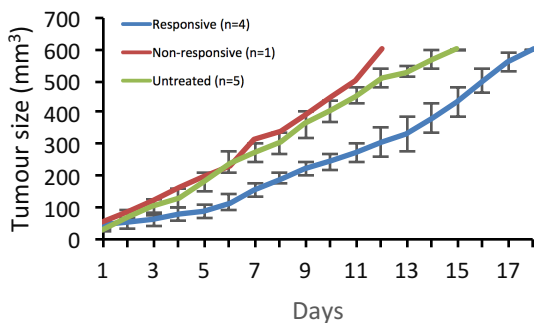


B

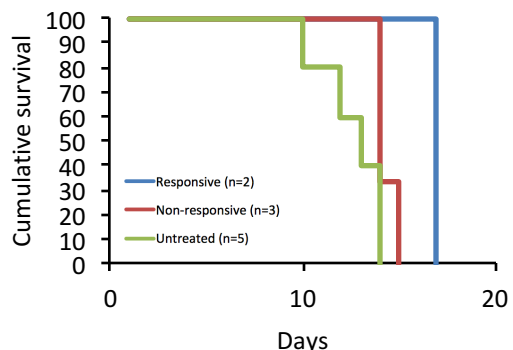
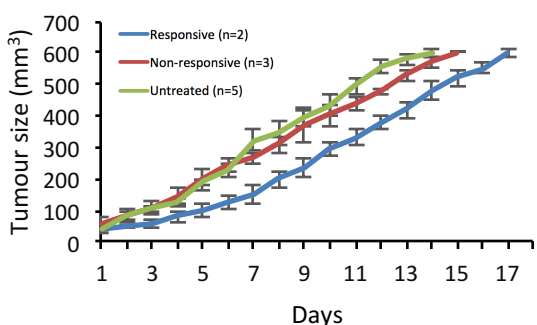
## Naïve tumours



## Acquired resistance tumours



## Innate resistance tumours



**Supplementary figure 1.** Sunitinib resistance inheritance. Tumour cells were isolated from 4T1 tumours displaying acquired (responsive cohort) or innate (non-responsive cohort) resistance to sunitinib treatment *in vivo* and cultured for 2 weeks. A, tumour growth curves of the selected tumours from each cohort.  $2.5 \times 10^5$  tumour cells from each culture along with treatment naïve 4T1 tumour cells were inoculated into Balb/c mice and the tumours allowed to grow to 600 mm<sup>3</sup> with or without 40 mg/Kg sunitinib treatment. B, tumour growth curves (mean  $\pm$  SEM) and Kaplan-meier plots for each inoculation, split into Untreated (green), Responsive (blue) and Non-responsive (red) cohorts. N-numbers as shown.