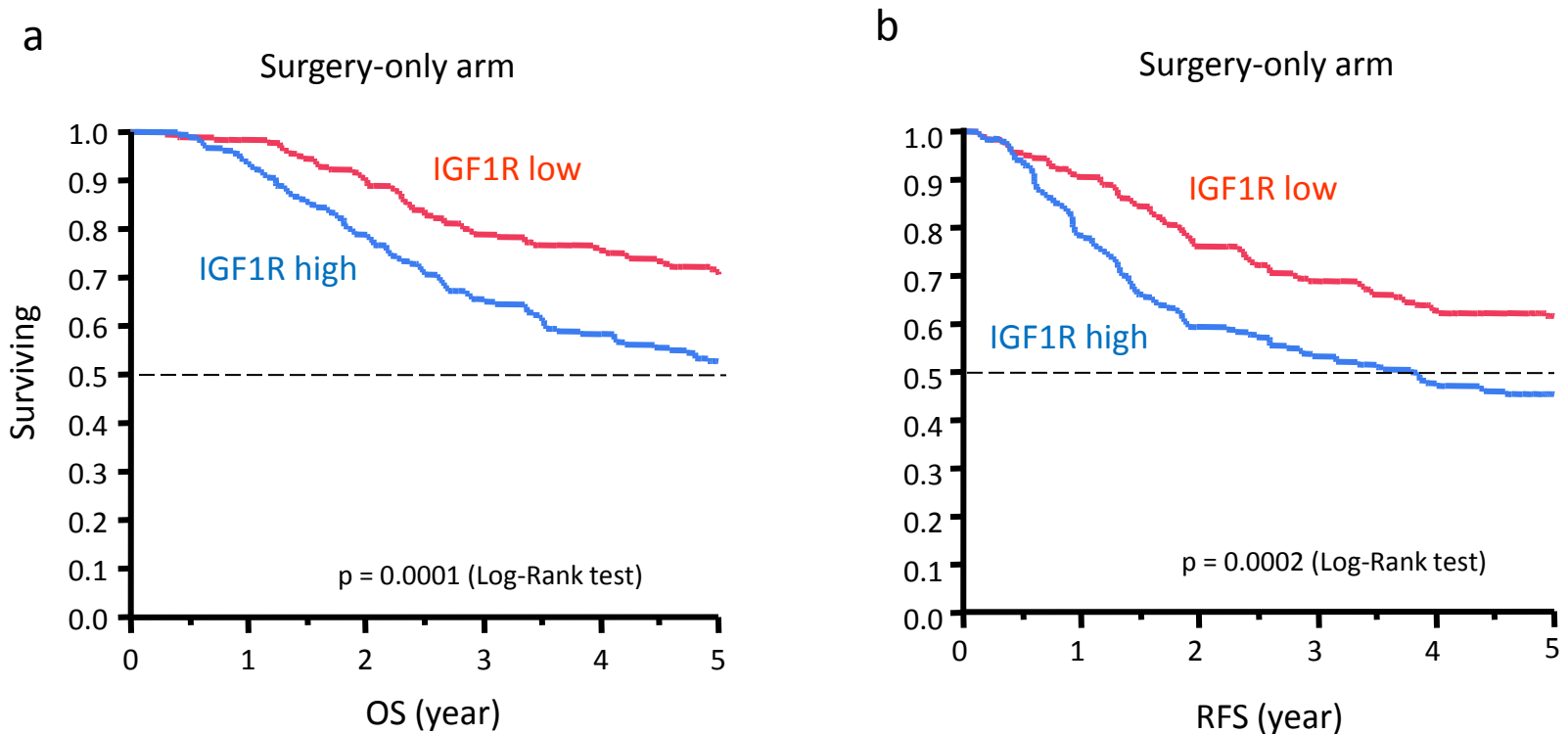
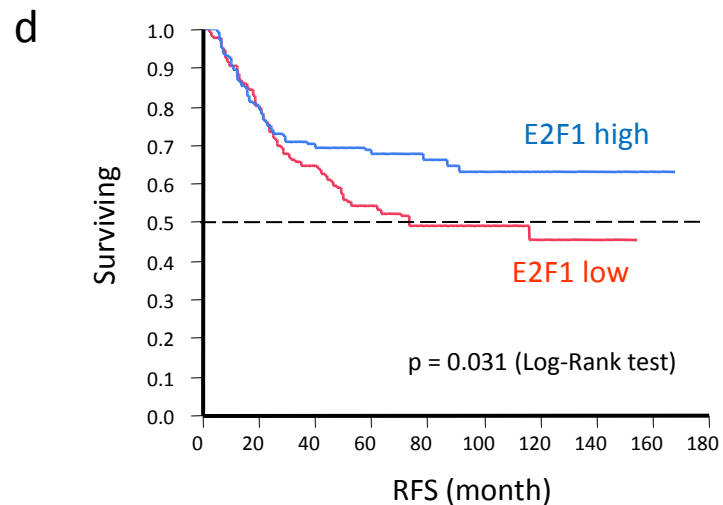
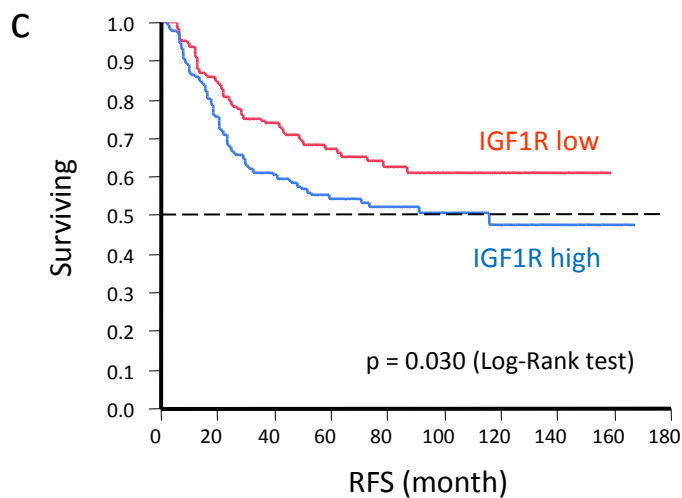
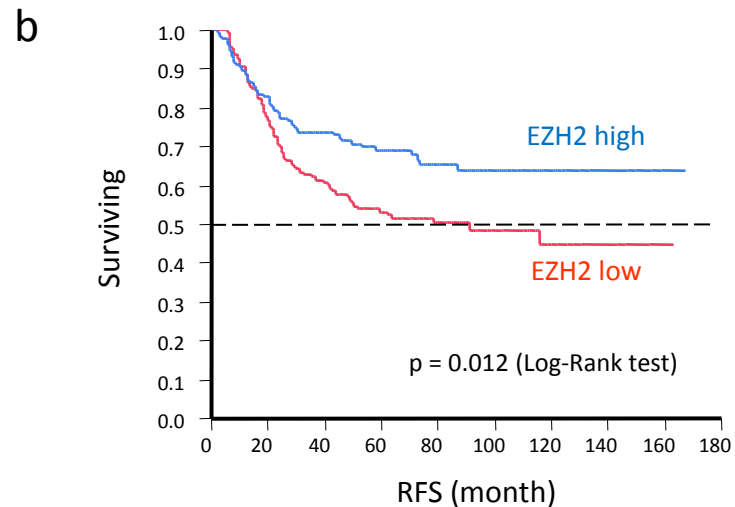
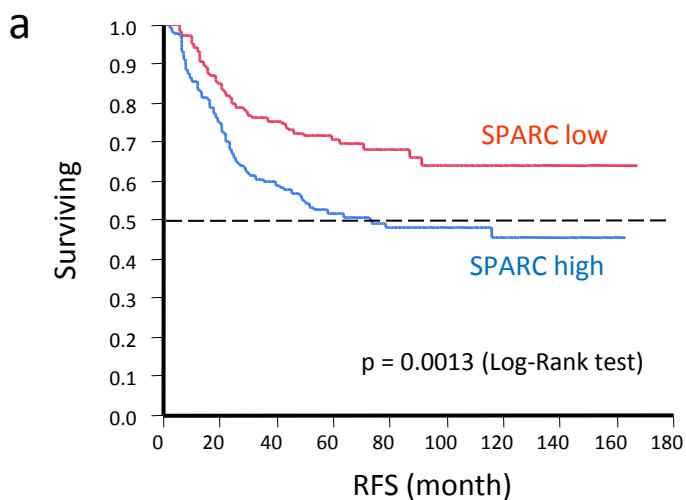


**Supplemental Figure S1.** Kaplan-Meier curves showing RFS for all patients according to *IGF1R* expression. RFS was poorer in high *IGF1R* tumors.



**Supplemental Figure S2.** Kaplan-Meier curves showing OS or RFS for patients in surgery-only arm according to *IGF1R* expression. OS (a) and RFS (b) in groups with tumors according to *IGF1R* expression. OS and RFS were poorer in high *IGF1R* tumors.



**Supplemental Figure S3.** Kaplan-Meier curves showing RFS for all patients according to *SPARC* (a), *EZH2* (b), *IGF1R* (c), and *E2F1* (d) expression from the GSE26253 data set. RFS was worse in tumors with high *SPARC* or *IGF1R* and low *EZH2* or *E2F1*.