

Supplementary Information

Evidence for Critical Role of Lymphocyte Cytosolic Protein 1 in Oral Cancer

Nao Koide¹, Atsushi Kasamatsu², Yosuke Endo-Sakamoto², Sho Ishida¹, Toshihiro Shimizu³, Yasushi Kimura⁴, Isao Miyamoto⁵, Shusaku Yoshimura¹, Masashi Shiiba⁶, Hideki Tanzawa^{1,2}, & Katsuhiko Uzawa^{1,2}

¹Department of Oral Science, Graduate School of Medicine, Chiba University, Chiba, Japan

²Department of Dentistry and Oral-Maxillofacial Surgery, Chiba University Hospital, Chiba, Japan

³Department of Oral Surgery, Kashima Rosai Hospital, Ibaraki, Japan

⁴Department of Oral and maxillofacial Surgery Research Institute, National Defense Medical College, Saitama, Japan

⁵Department of Dentistry and Oral-Maxillofacial Surgery, Japanese Red Cross Fukaya Hospital, Saitama, Japan

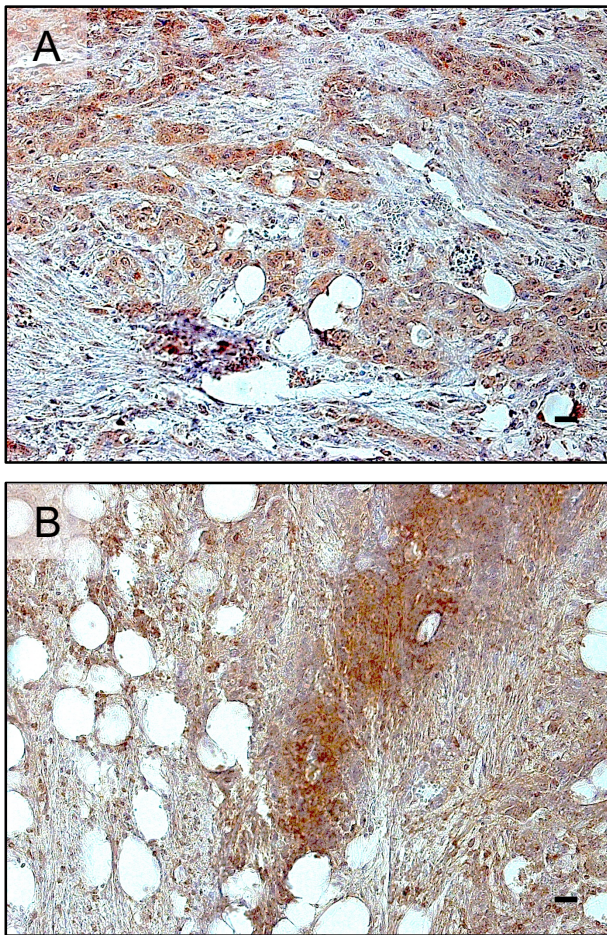
⁶Department of Clinical Oncology, Graduate School of Medicine, Chiba University, Chiba, Japan

*Corresponding Authors:

A. Kasamatsu and K. Uzawa, Department of Oral Science, Graduate School of Medicine, Chiba University, 1-8-1 Inohana, Chuo-ku, Chiba 260-8670, Japan

E-mails: kasamatsua@faculty.chiba-u.jp; uzawak@faculty.chiba-u.jp

Supplemental Fig. S1



Supplemental Figure S1. Representative results of IHC for LCP1 (A) and F-actin (B).

Note that the cancer cells at the invasive front reveal strong immunoreaction for both LCP1 and F-actin. Original magnification, x 200. Scale bars, 50 μ m.