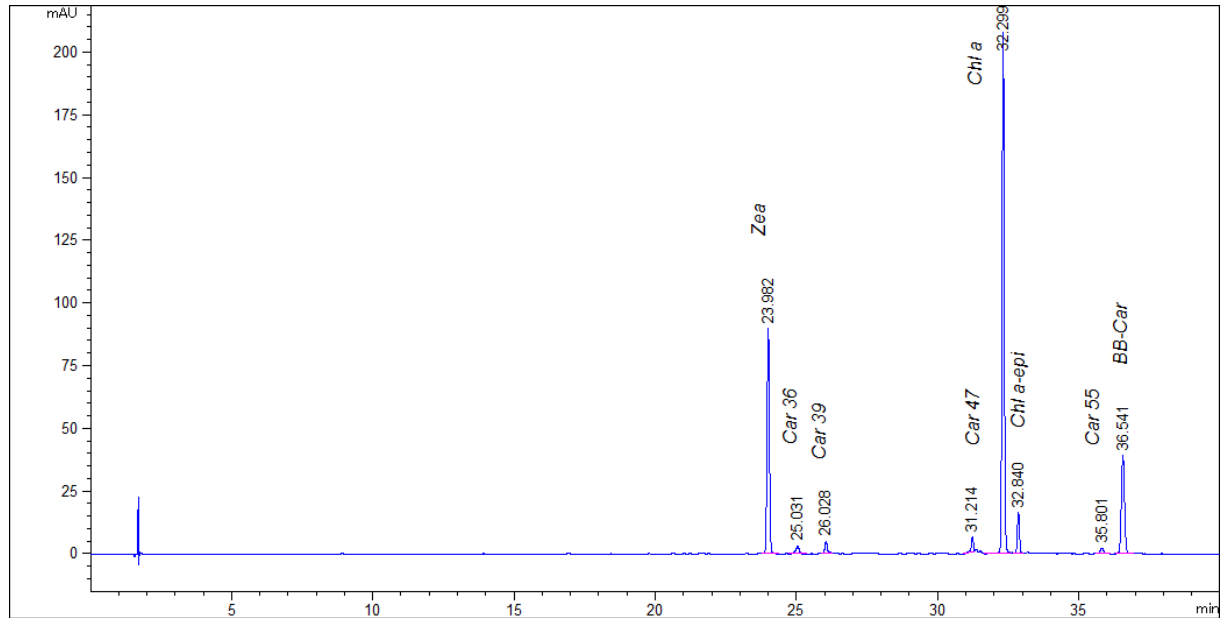
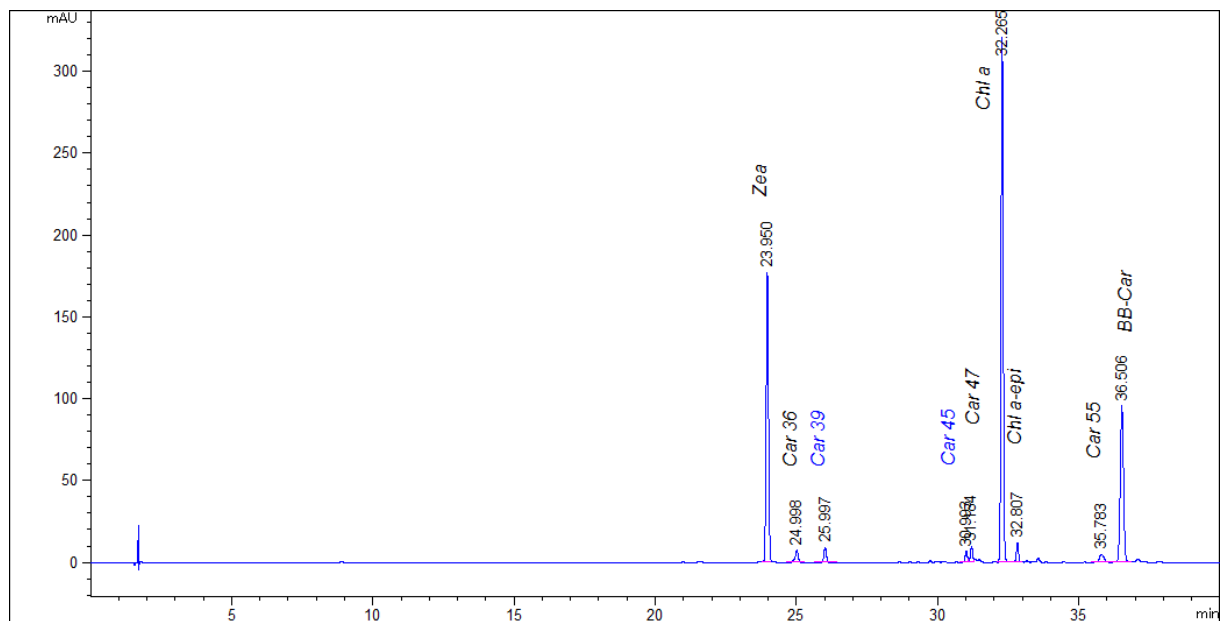


# Supporting Information

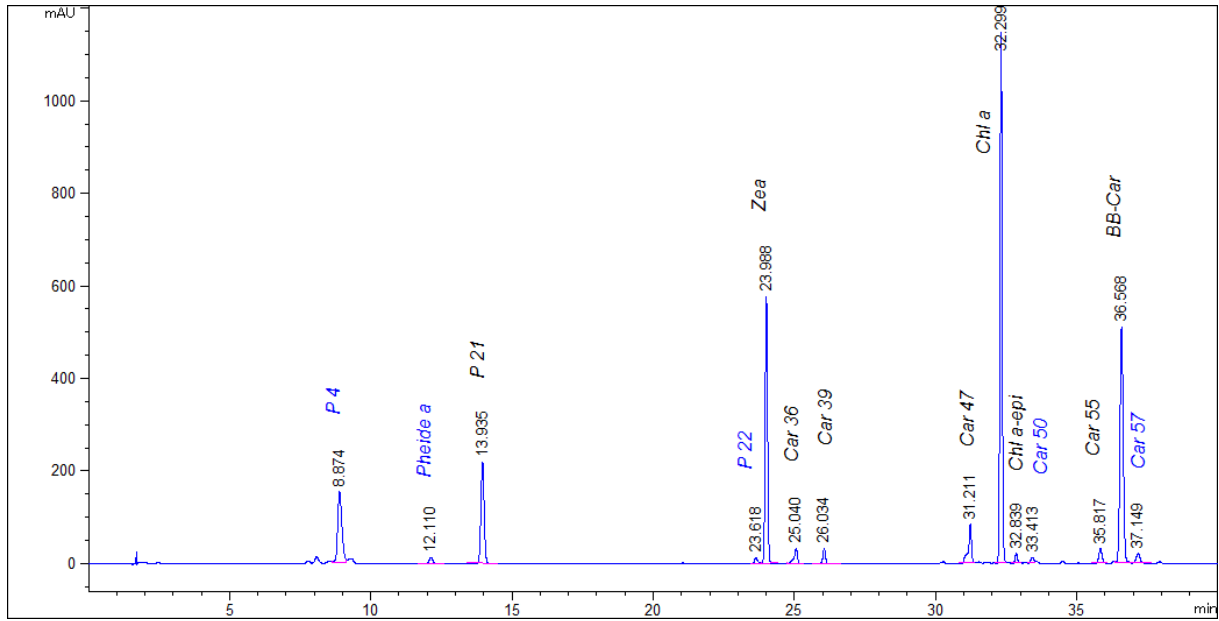
**S3 Figs. Chromatograms at 436 nm of all carotenoid and chlorophyll pigments detected in the 37 analysed strains.** Ancillary pigments are annotated according to Table 2.



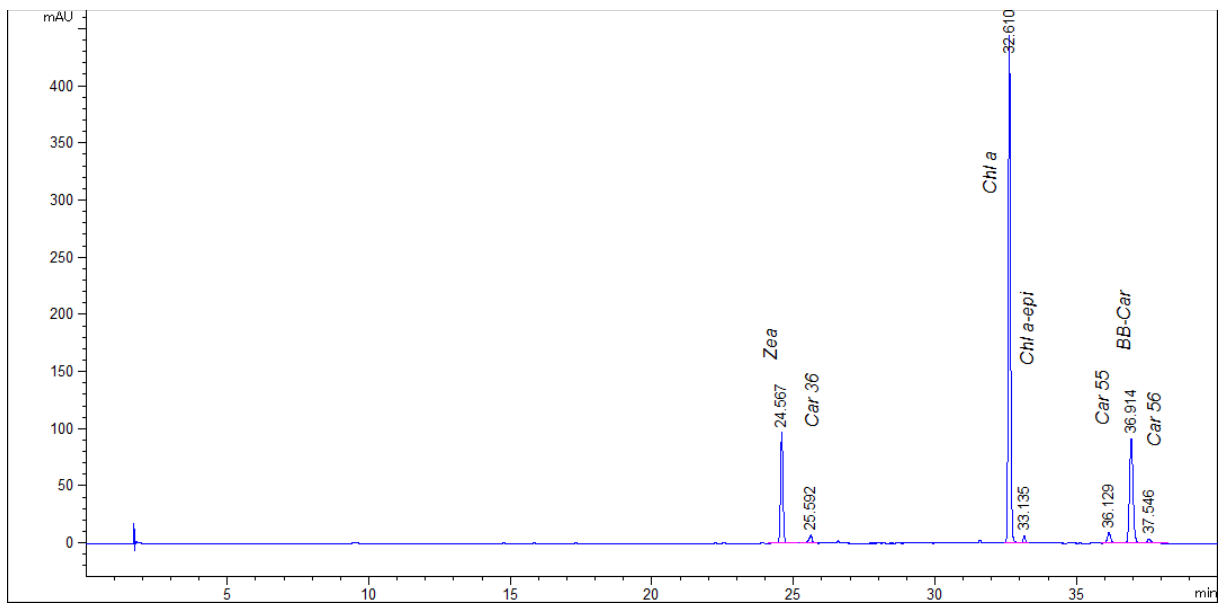
*Porphyridium purpureum* SAG 1380-d



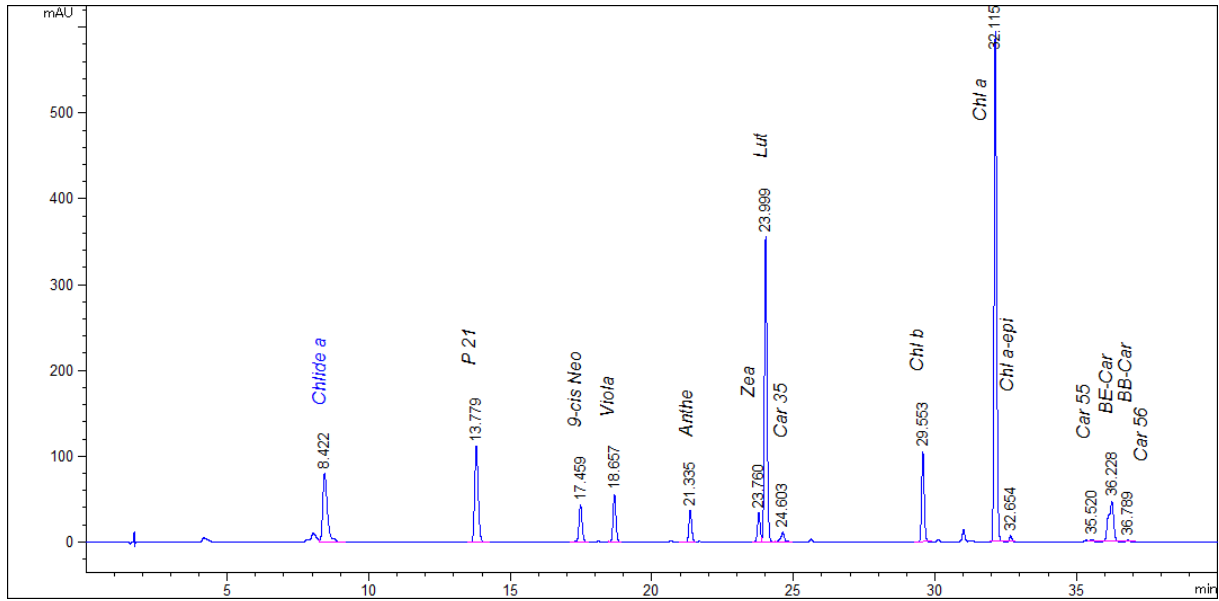
*Rhodella violacea* SAG 115.79



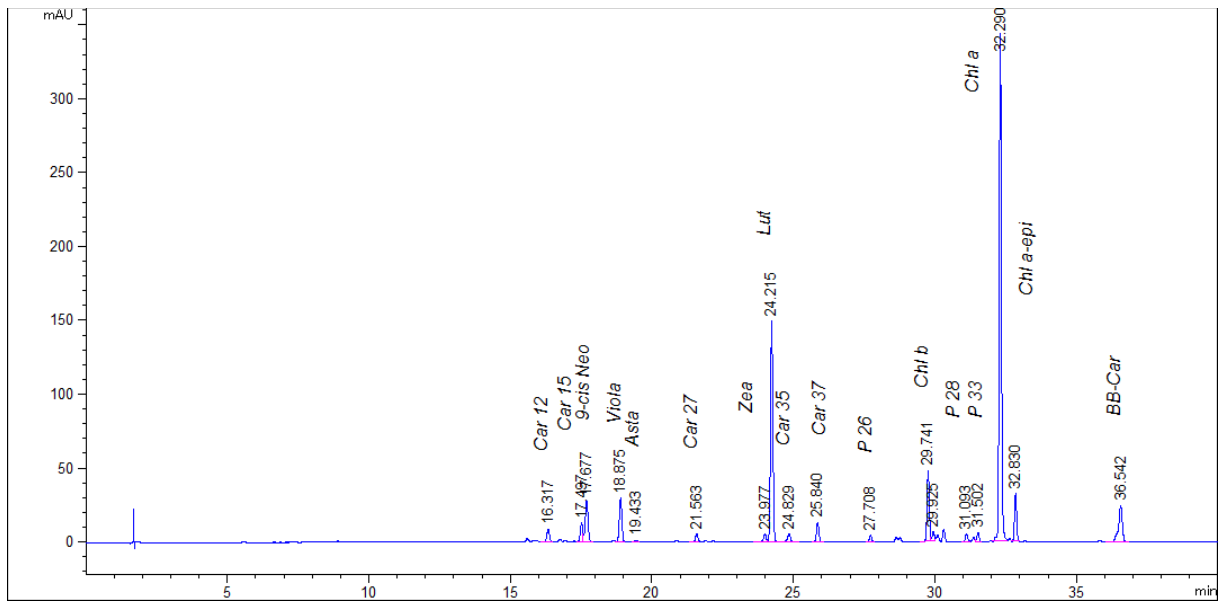
*Galdieria sulphuraria*



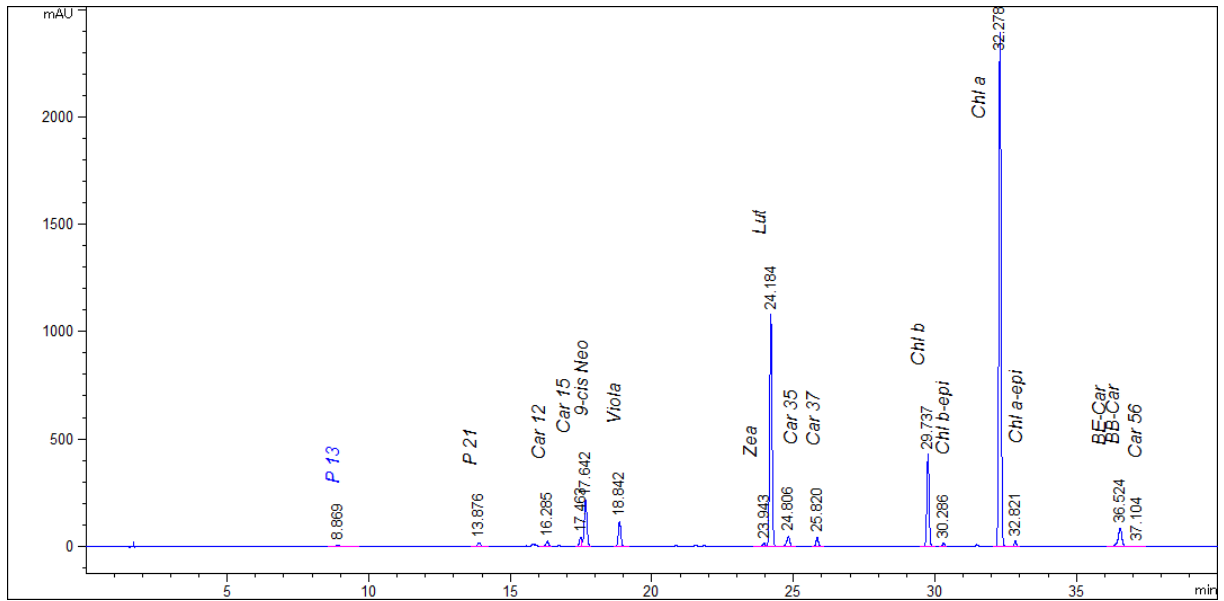
*Cyanophora paradoxa* SAG 29.80



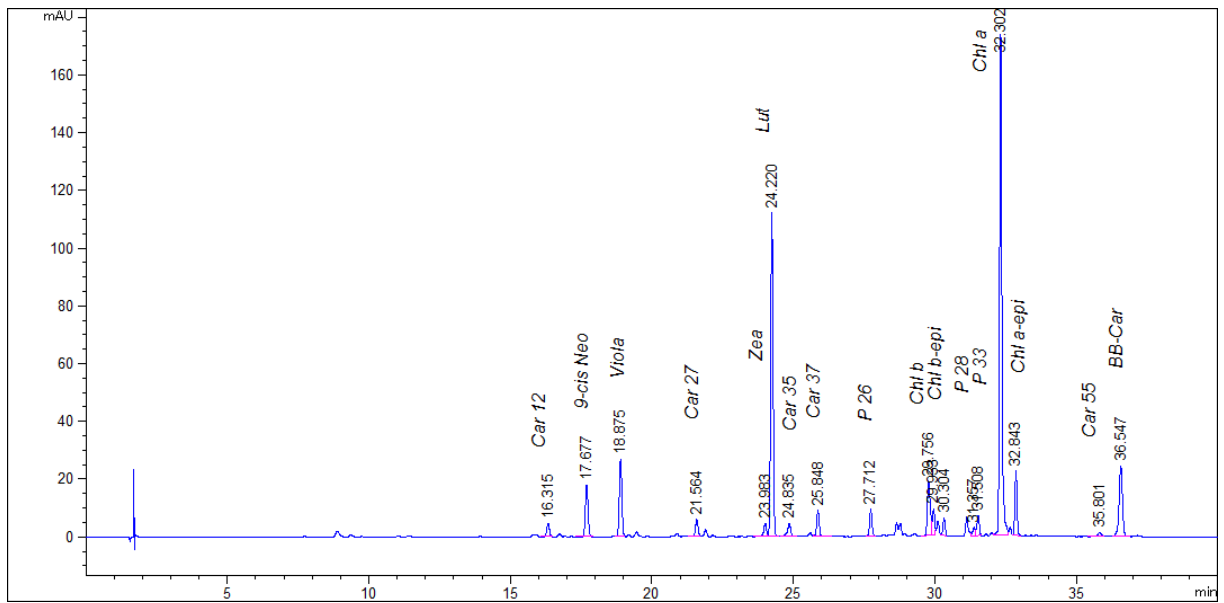
*Closterium baillyanum* SAG 50.89



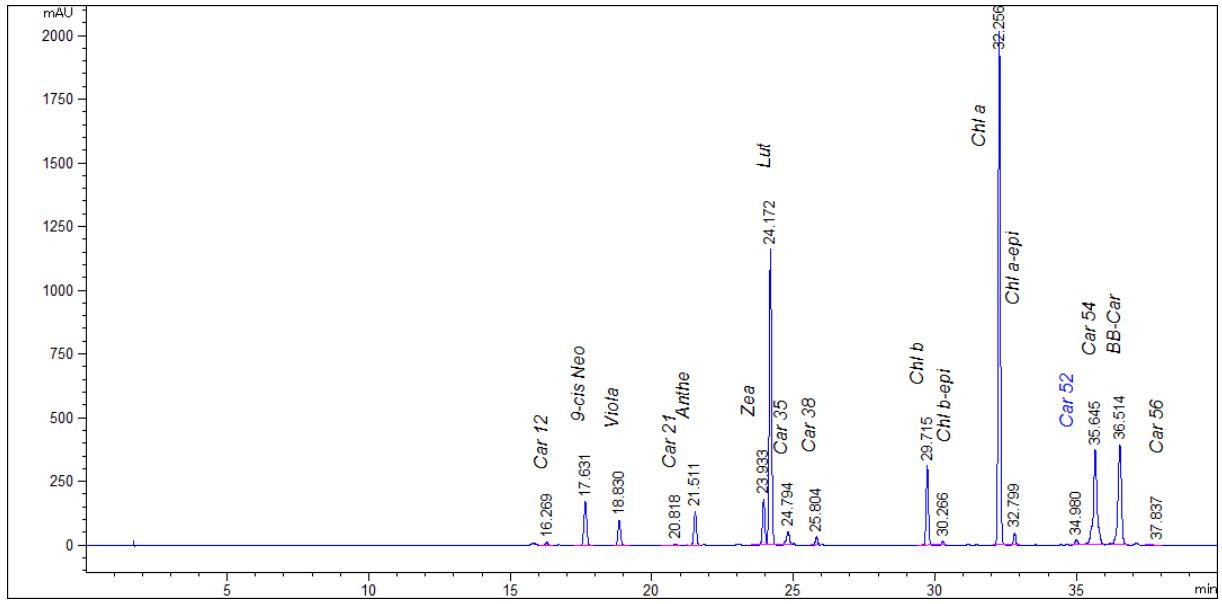
*Scenedesmus acutus* f. *alternans* UTEX 72



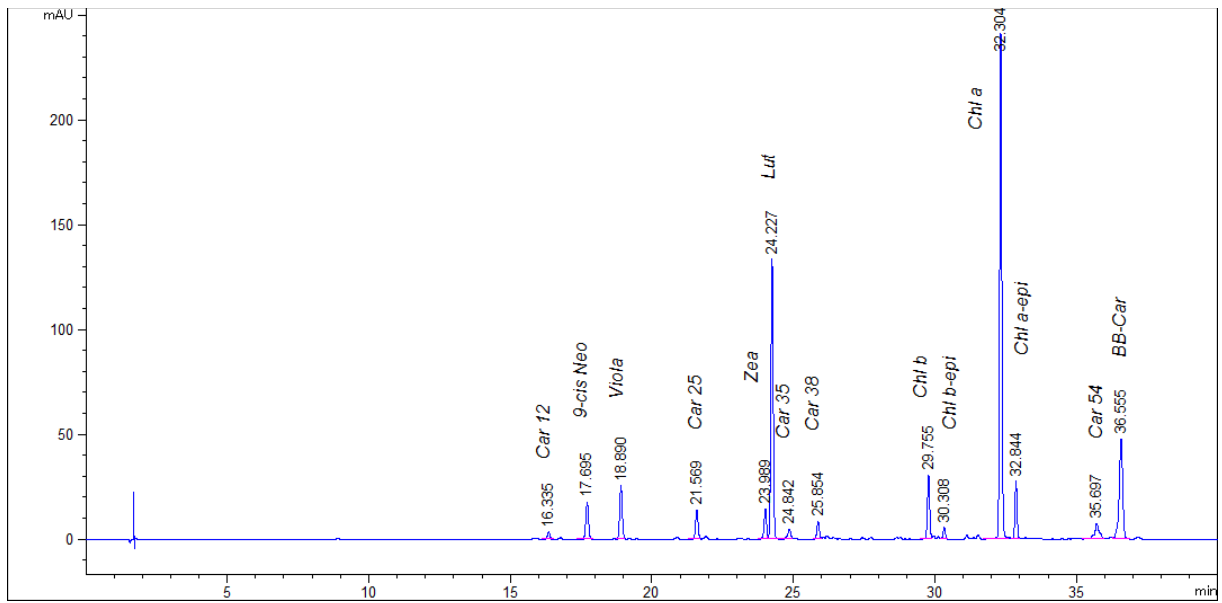
*Scenedesmus obliquus* UTEX 1450



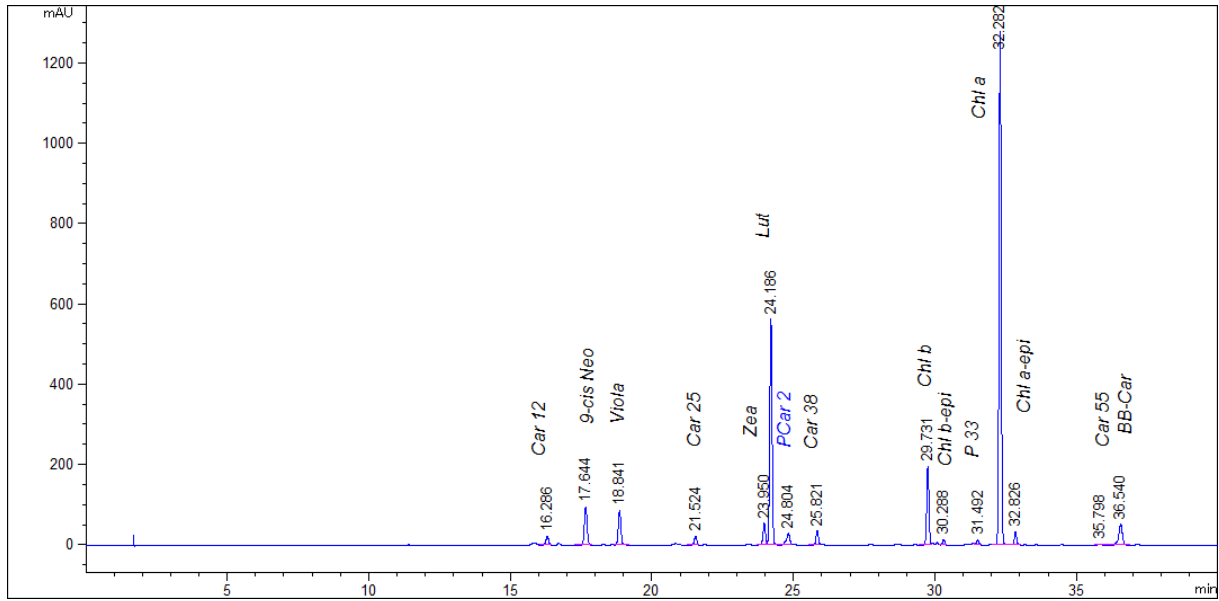
*Haematococcus pluvialis* CCAP 34/7



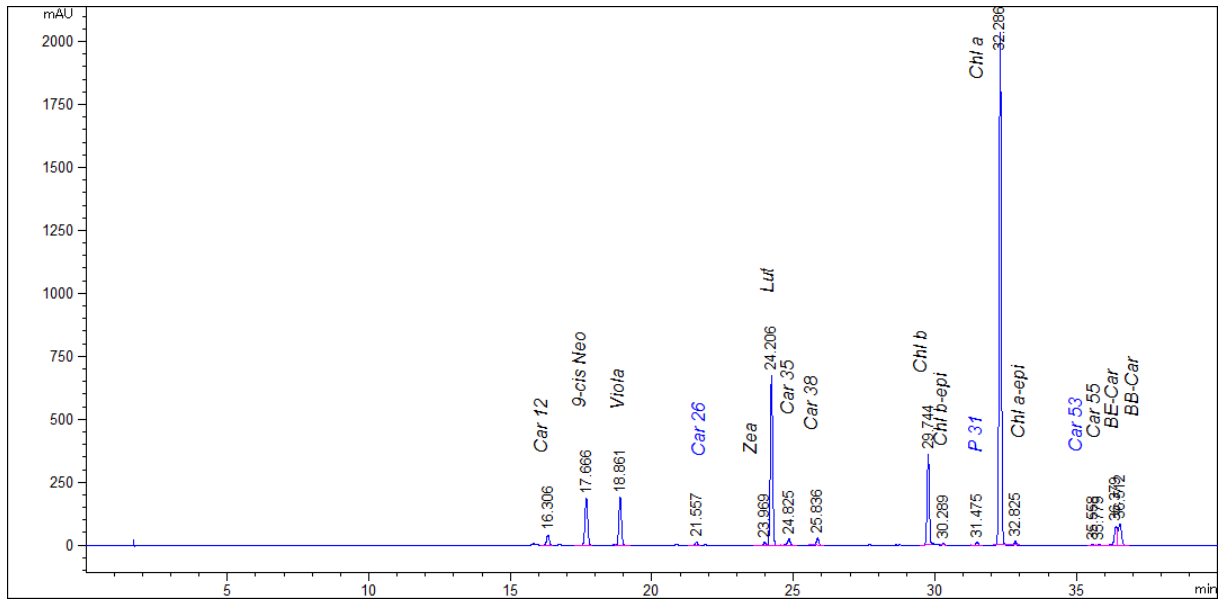
*Dunaliella* sp. CCAP 19/19



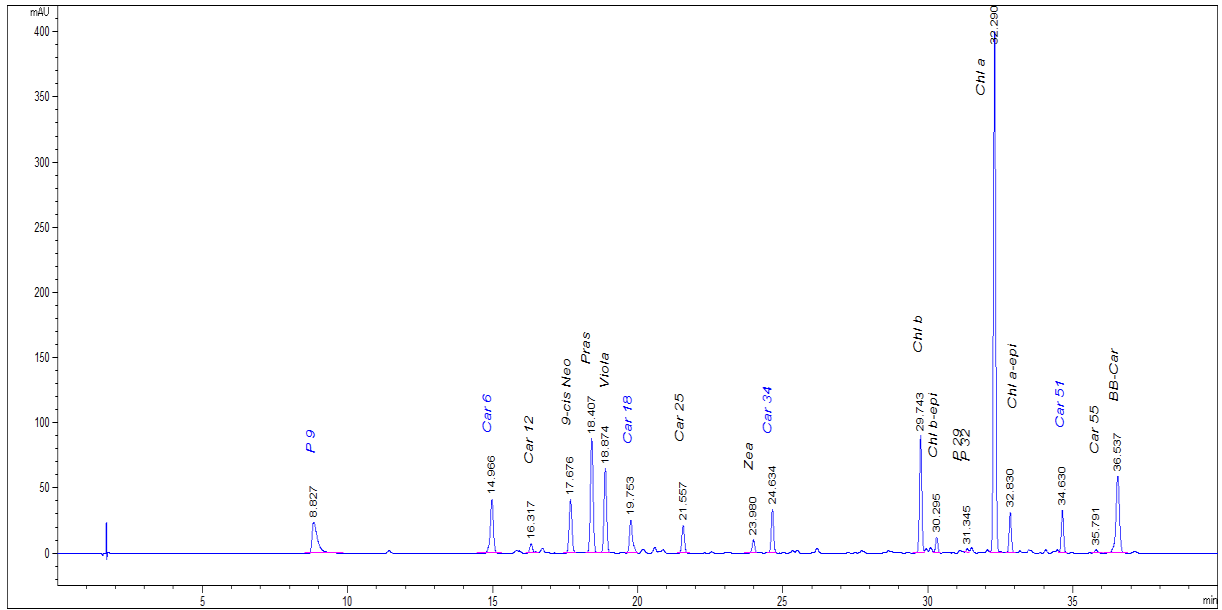
*Dunaliella salina* SAG 19-3



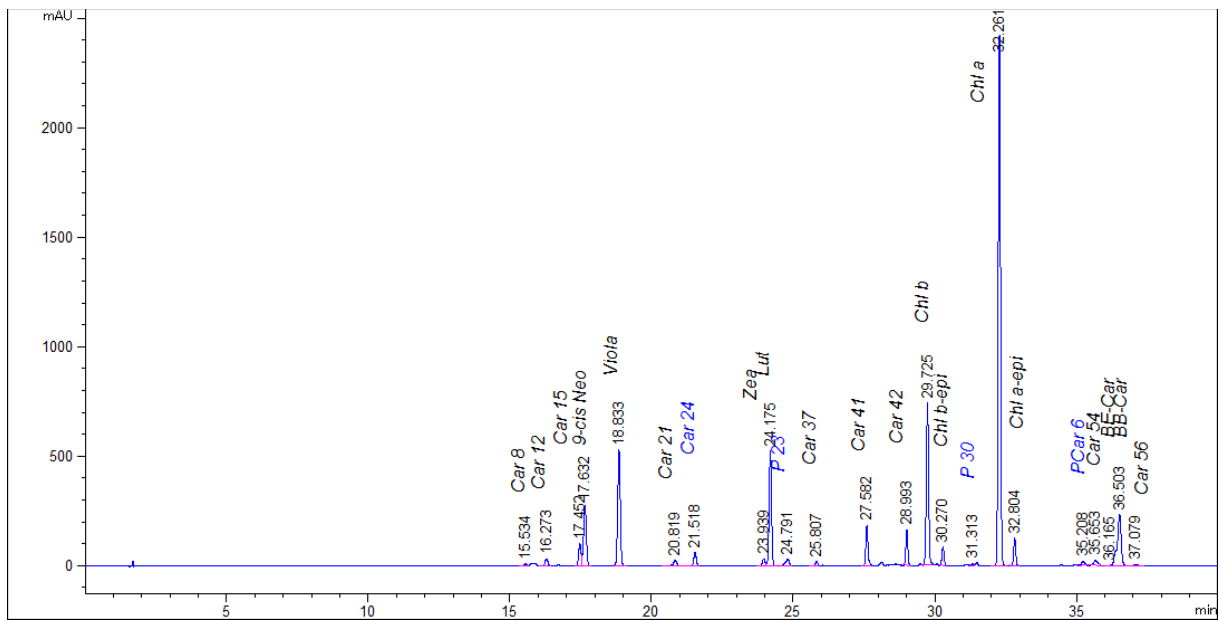
*Chlorella autotrophica* CCMP 243



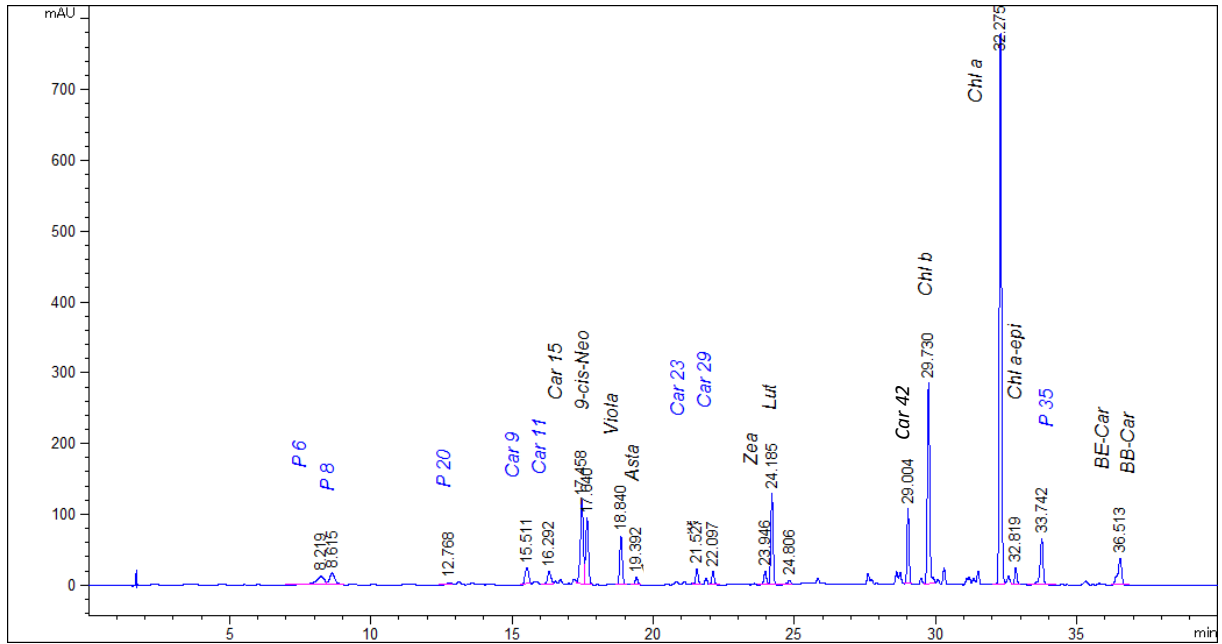
*Chlorella vulgaris* SAG 2.80



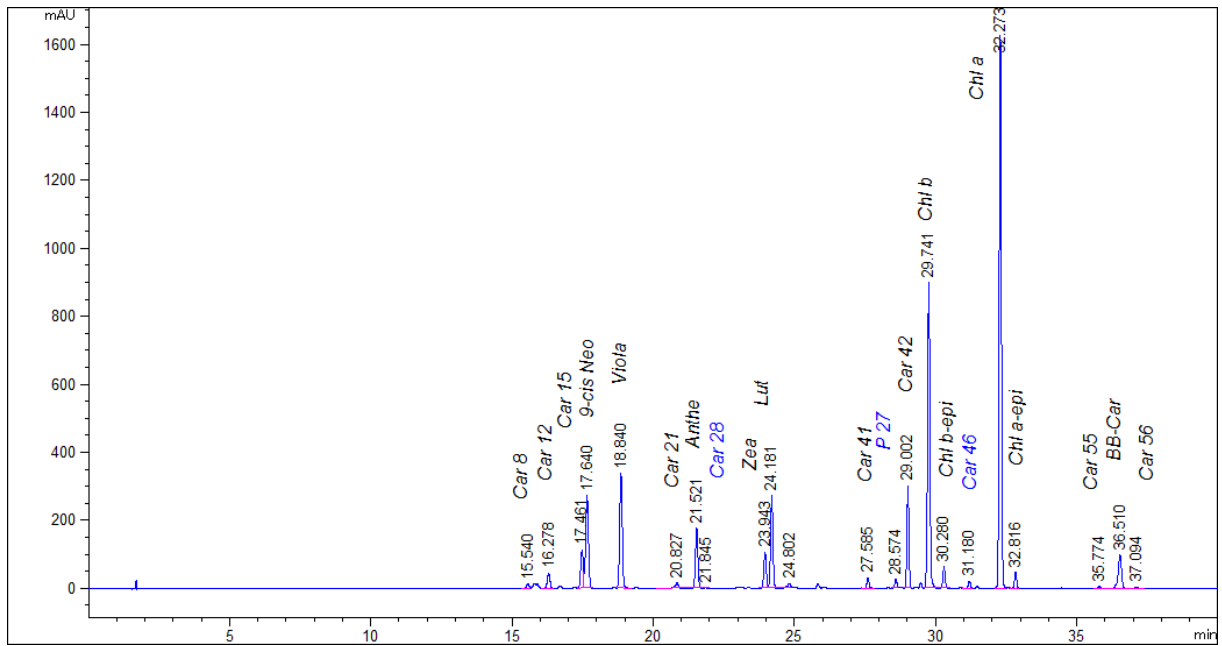
*Ostreococcus tauri* H95



*Tetraselmis suecica* CCMP 904

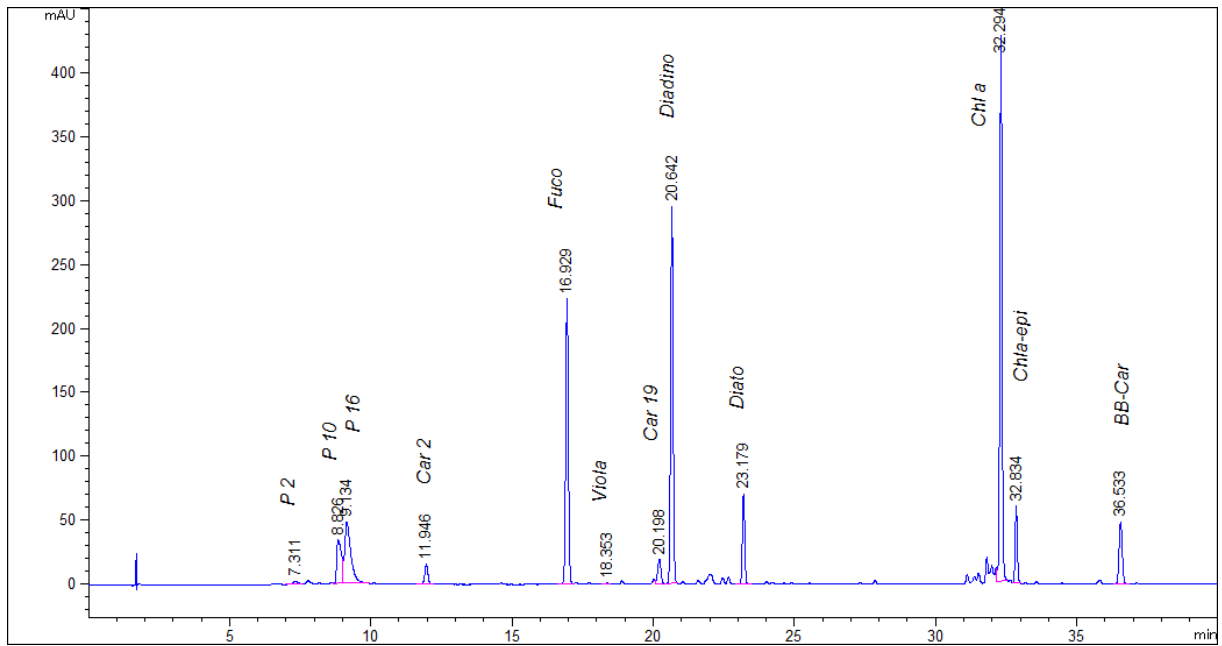


*Chlorarachnion reptans* SAG 26.97 (fed with *Nitzschia curvilineata*.)

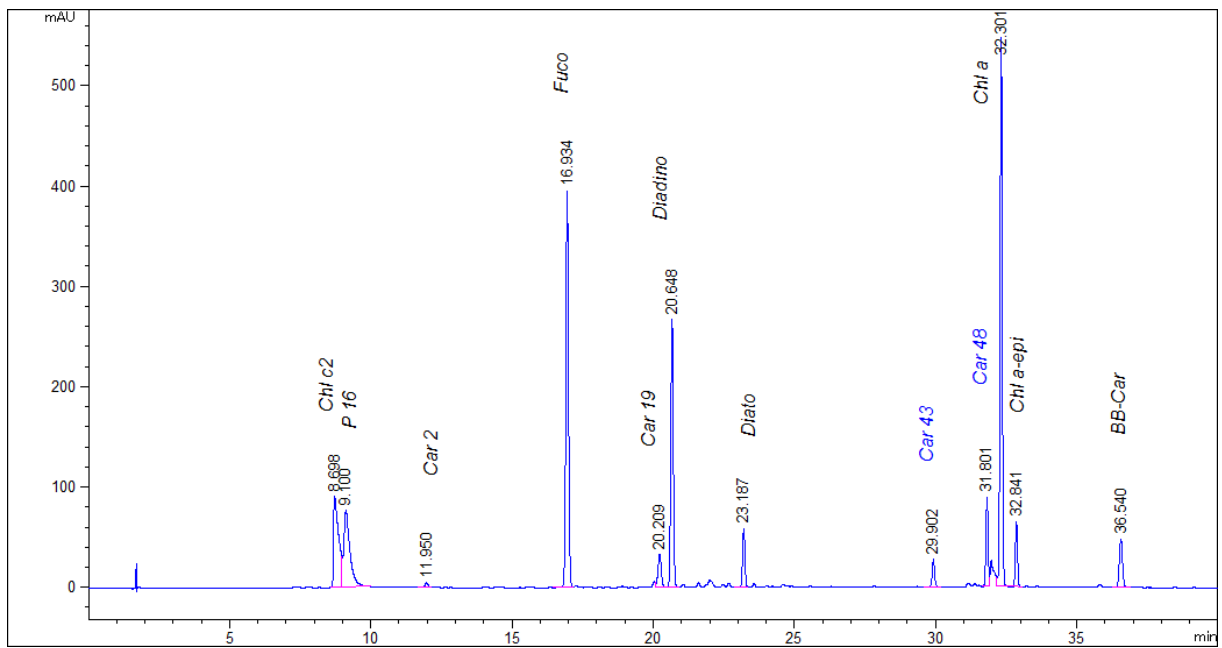


*Bigelowiella natans* CCMP 621

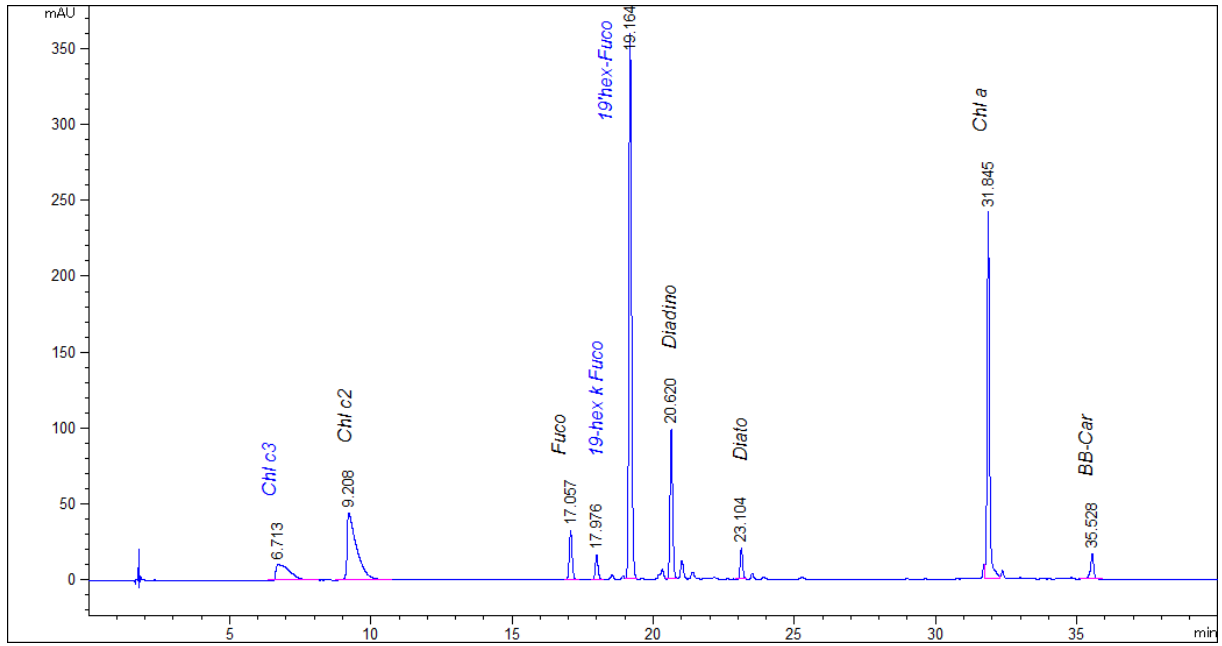




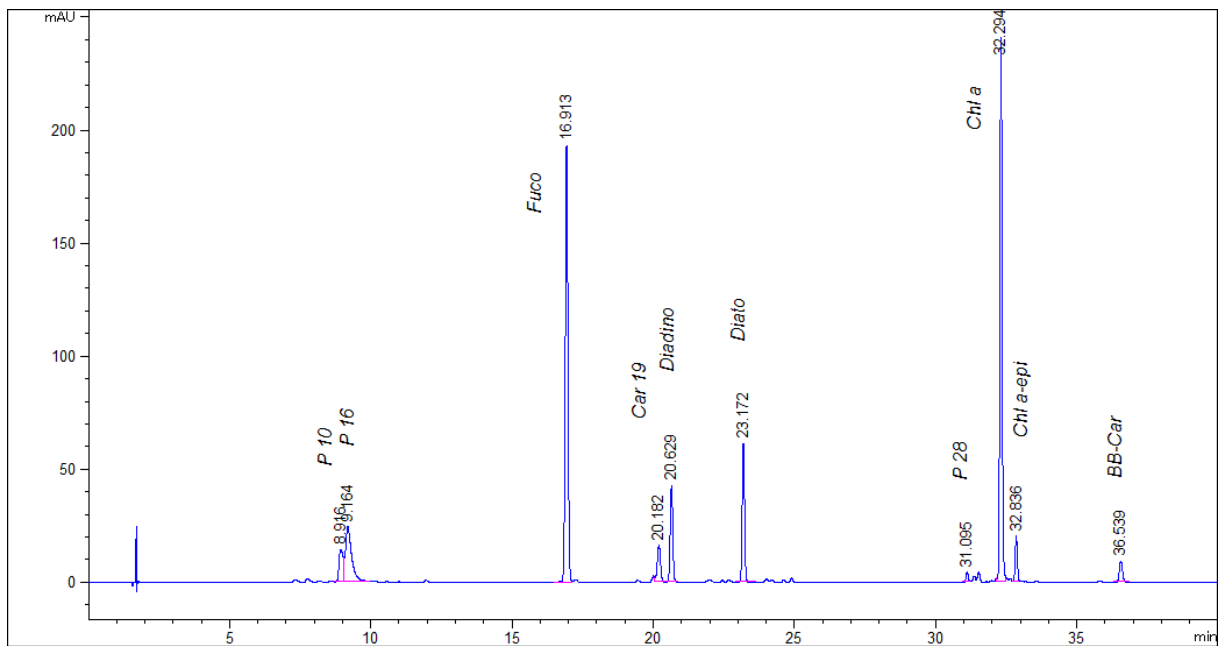
*Isochrysis galbana* SAG 13.92



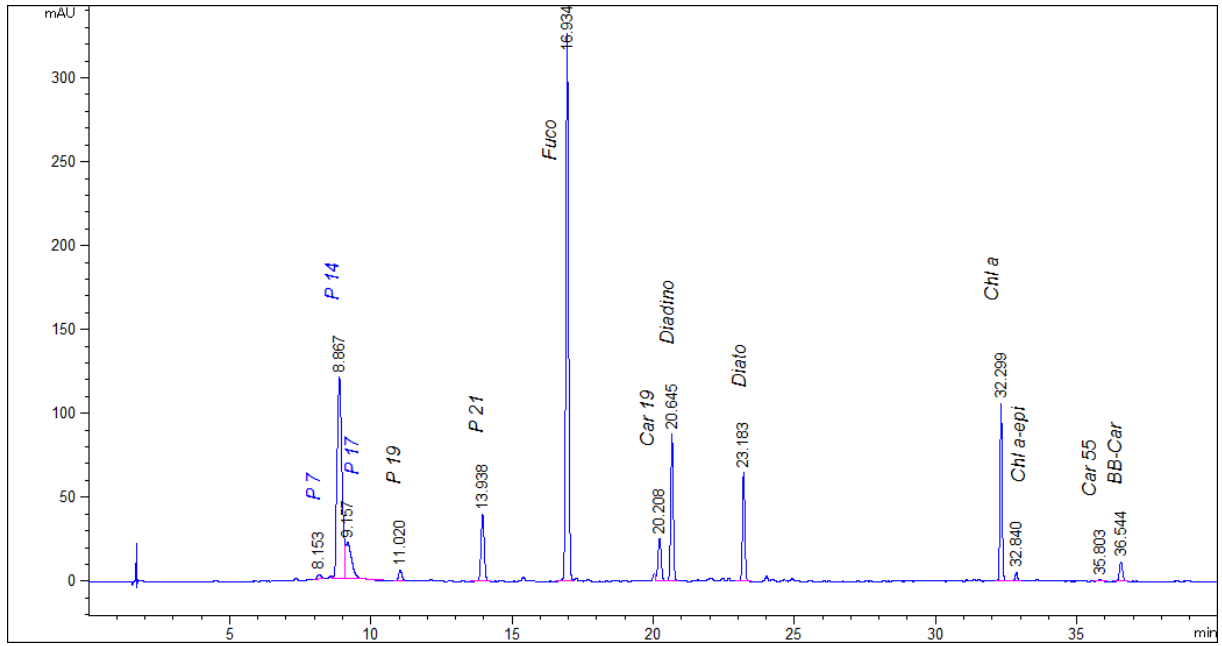
*Tisochrysis lutea* CCAP927/114



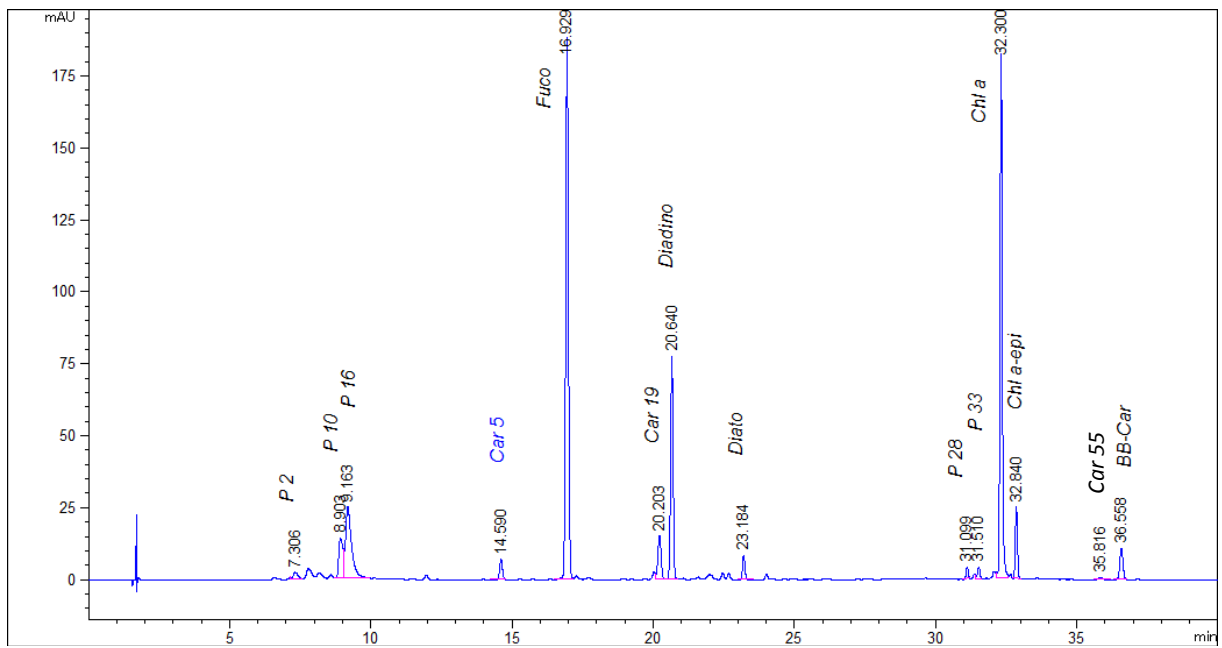
*Emiliana huxleyi* SAG 33.90



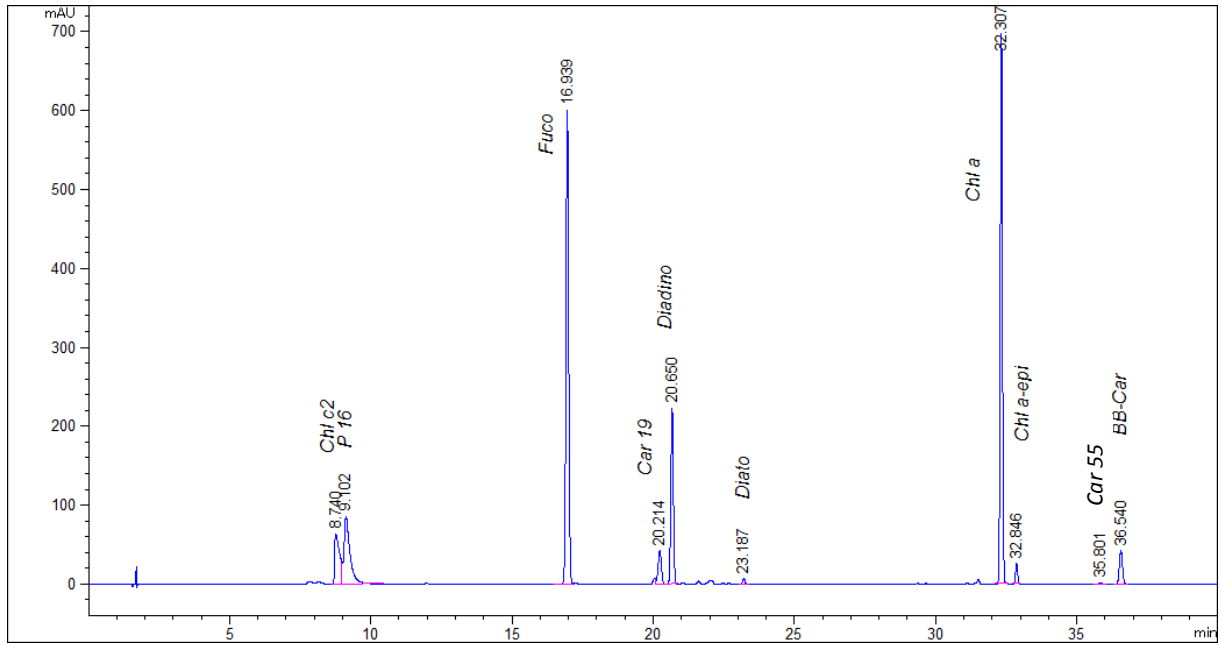
*Thalassiosira pseudonana* SAG 1224-11a



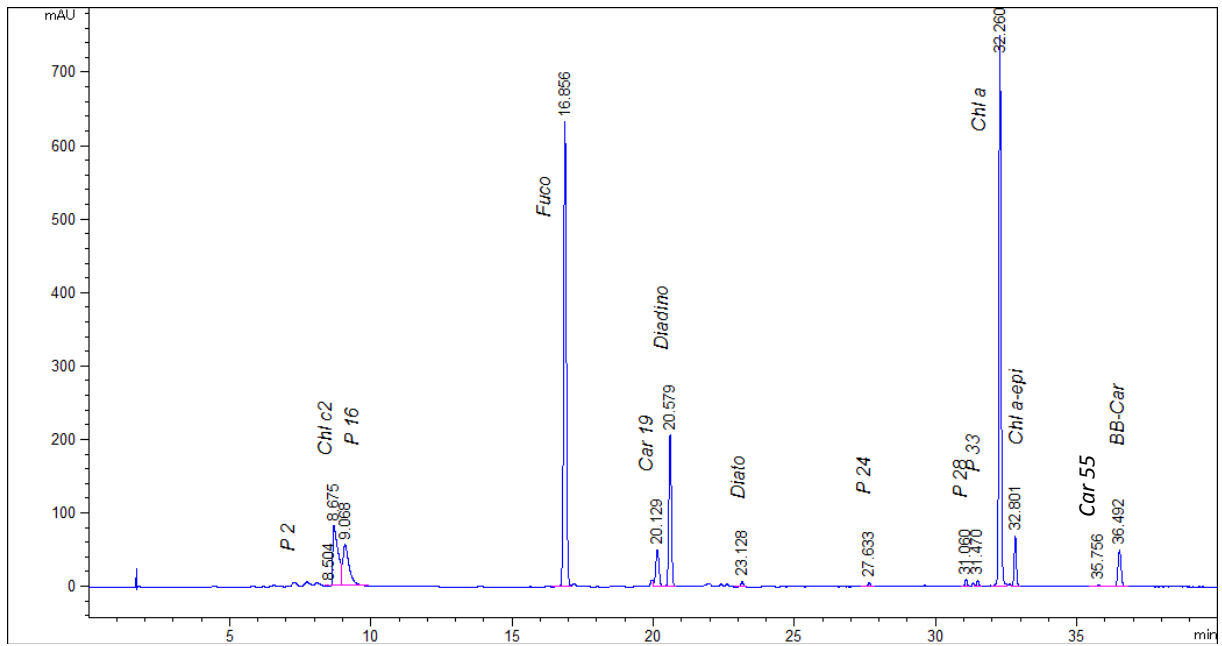
*Skeletonema grethae* CCAP 1077/4



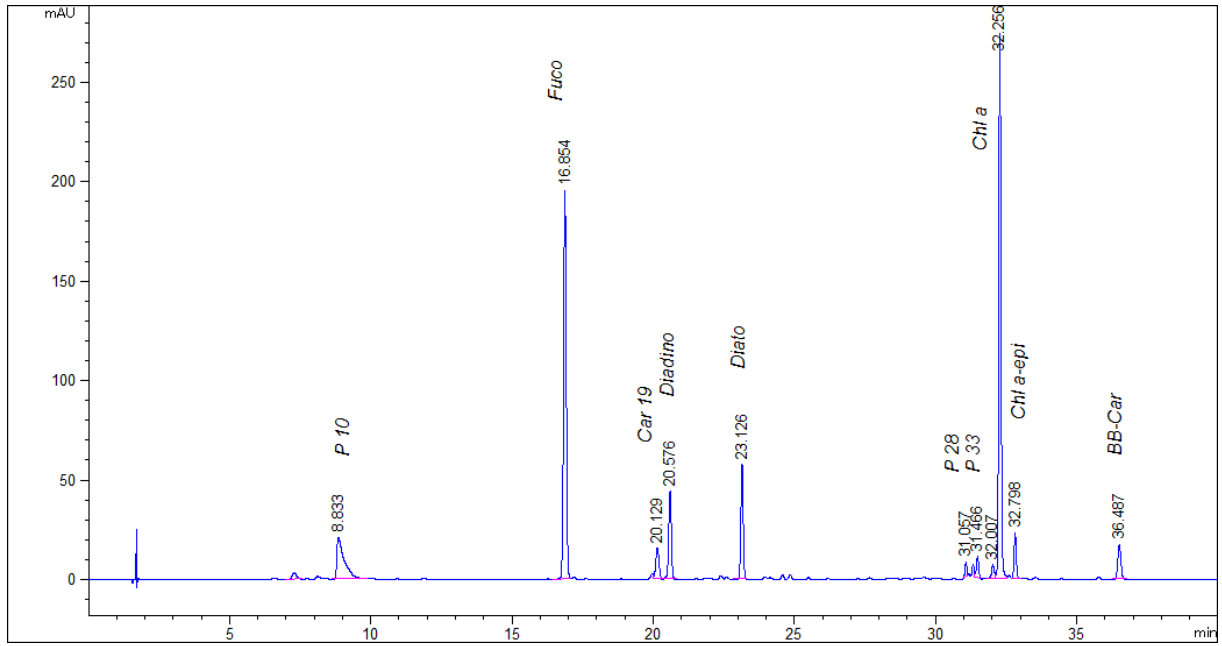
*Odontella aurita* 123



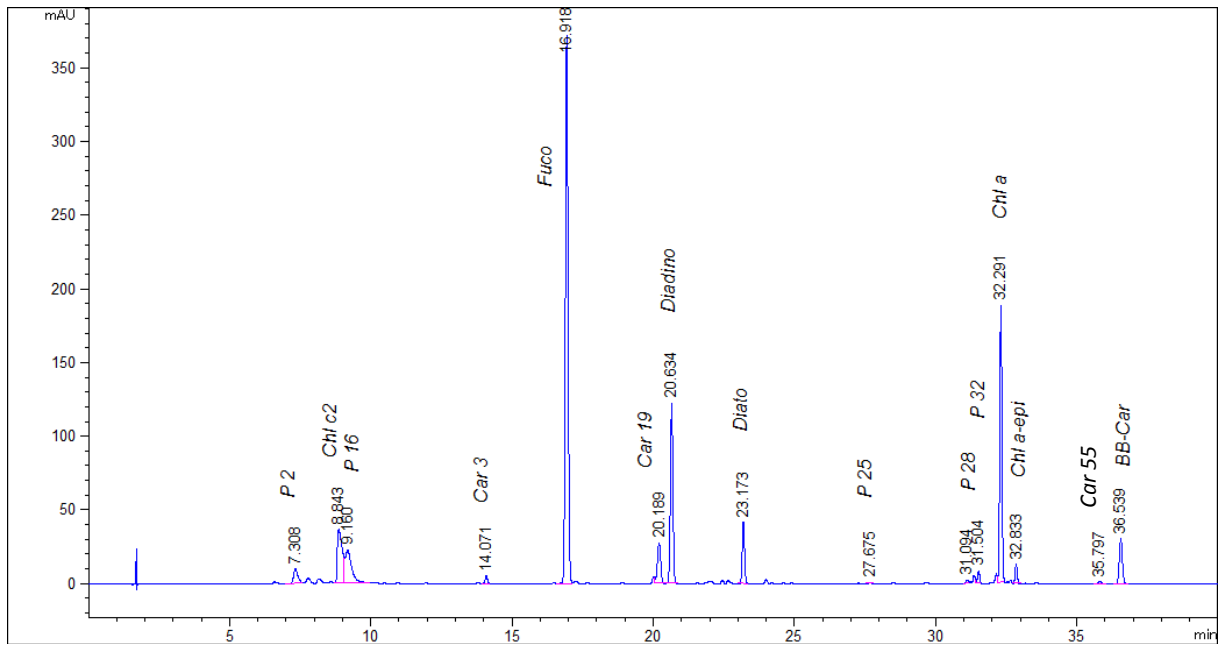
*Odontella aurita* 122



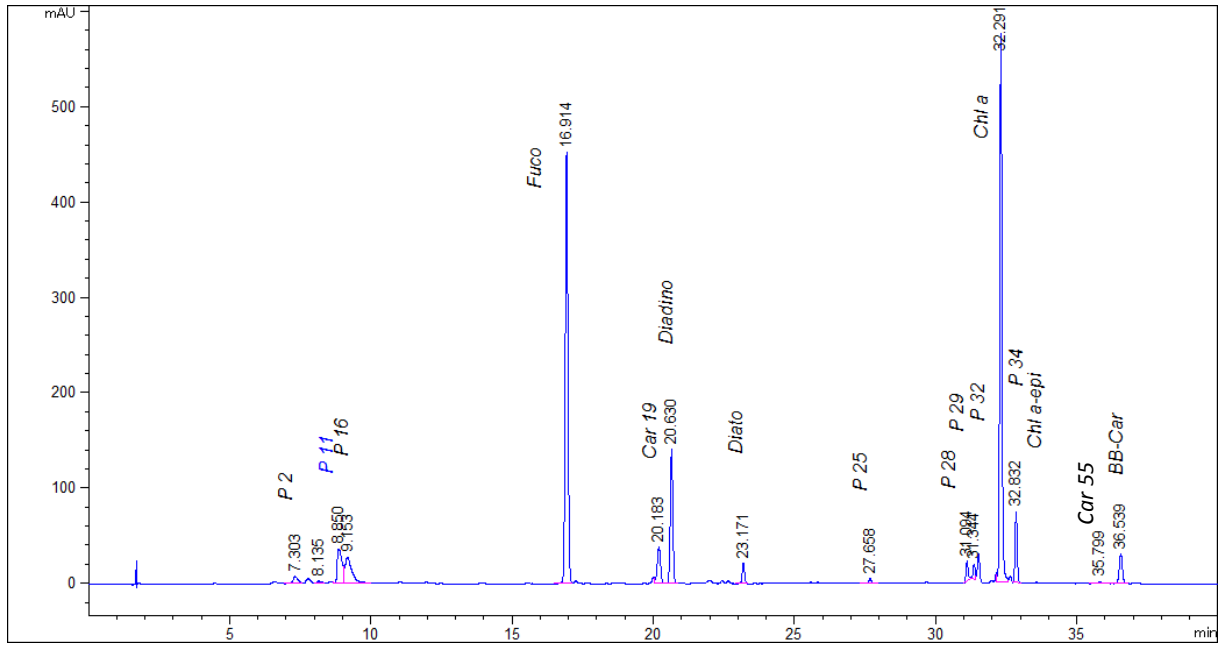
*Chaetoceros mulleri*



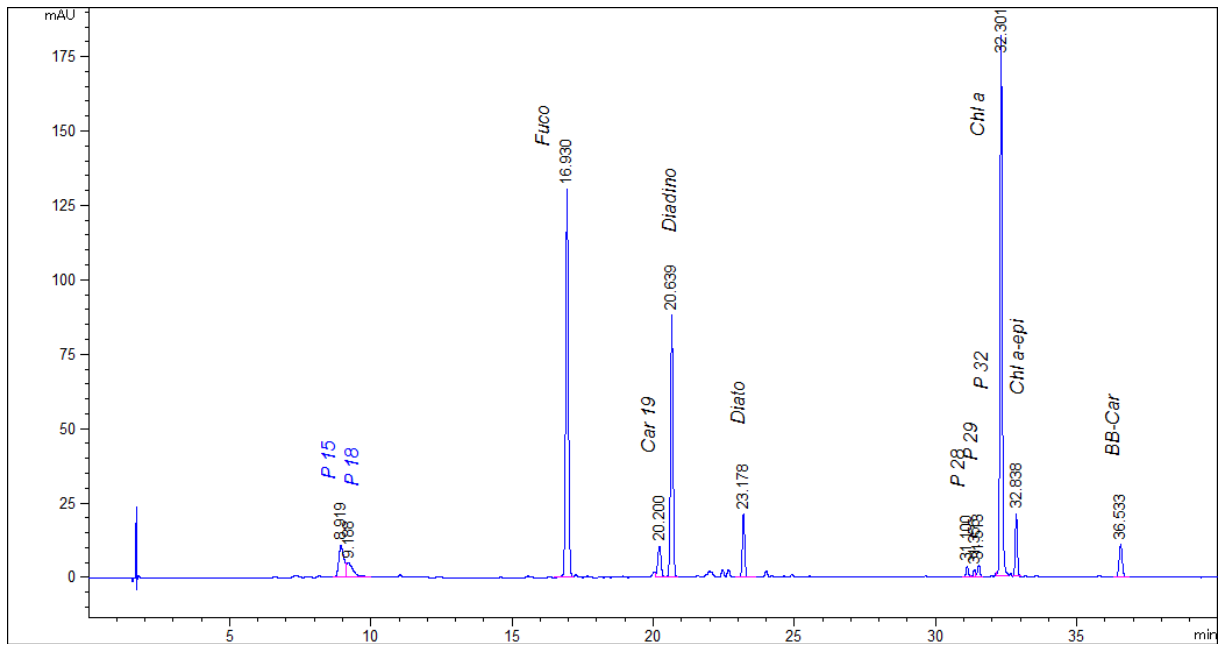
*Chaetoceros minus*



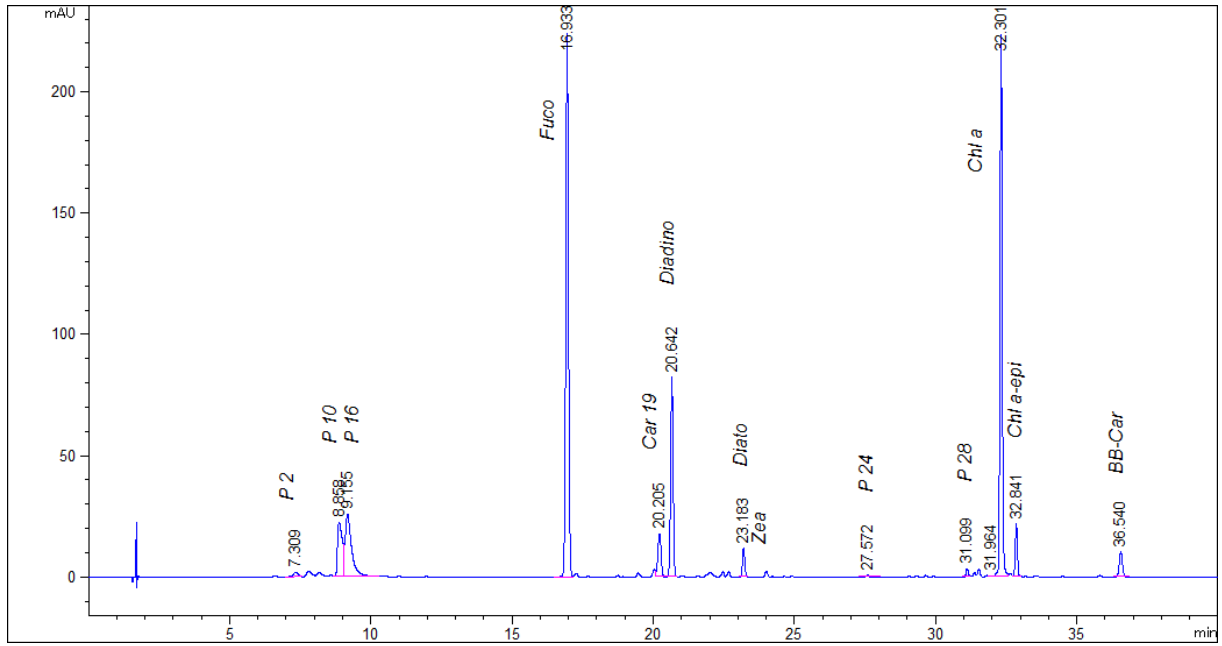
*Chaetoceros sp. tenuissimus* like



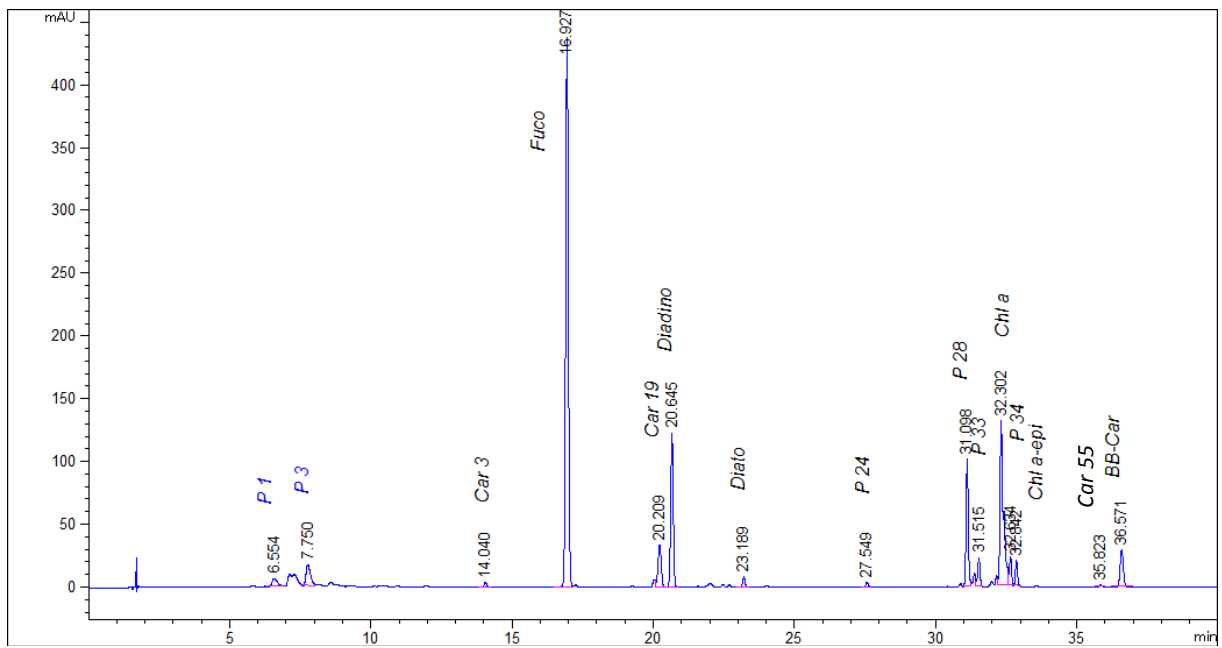
*Chaetoceros calcitrans f. pumillum* CCAP 1010/11



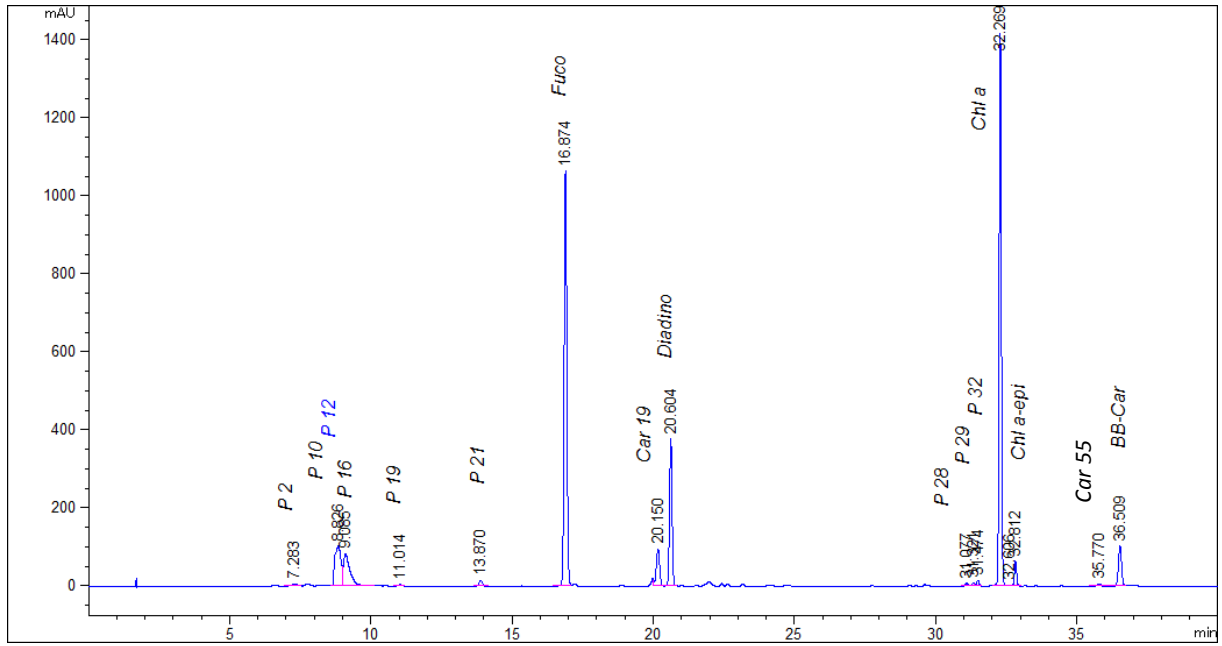
*Chaetoceros calcitrans* CCMP 1315



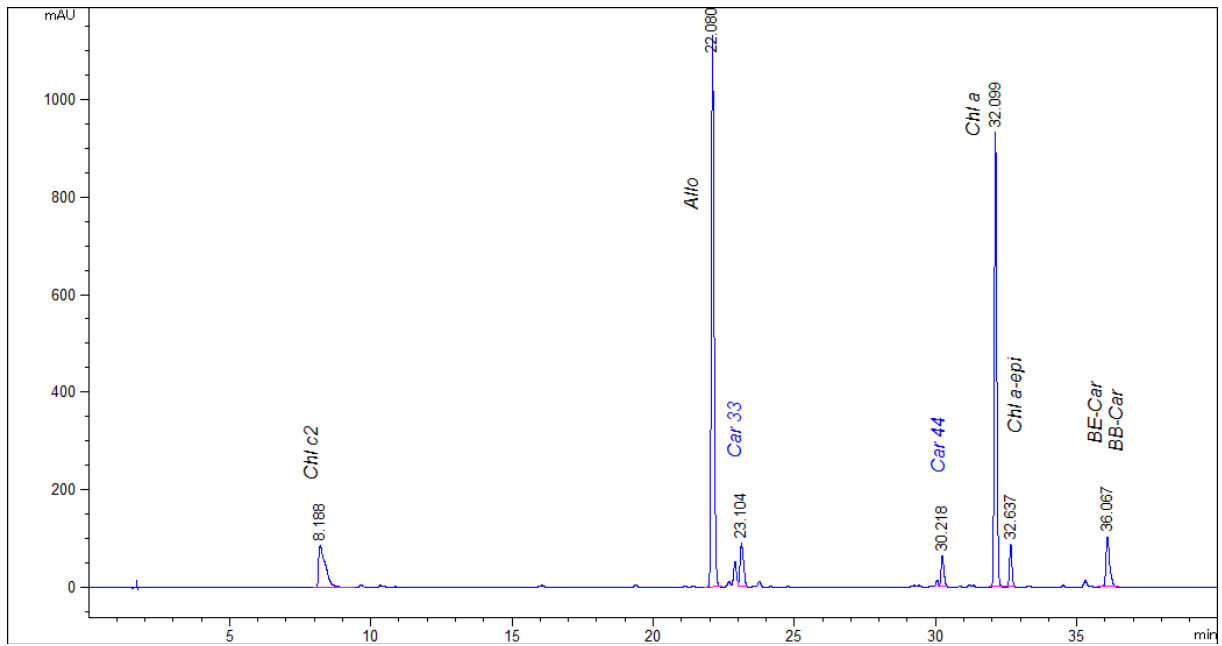
*Chaetoceros gracilis* UTEX LB 2658



*Nitzschia* sp. CCMP 2526

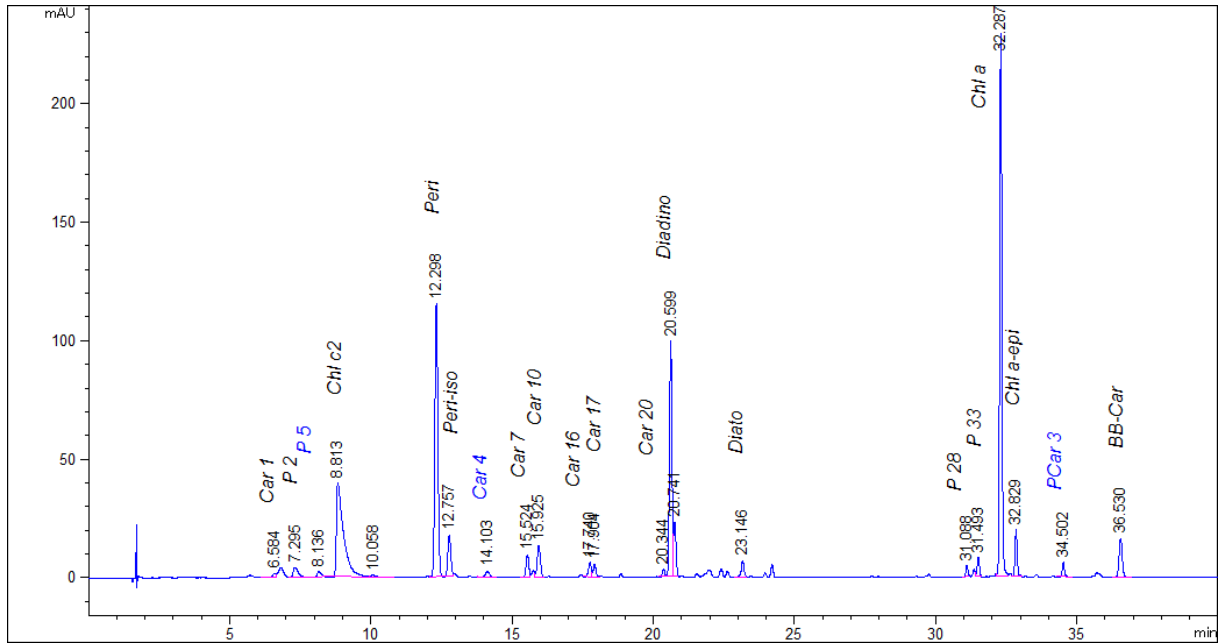


*Phaeodactylum tricornutum* CCMP 632

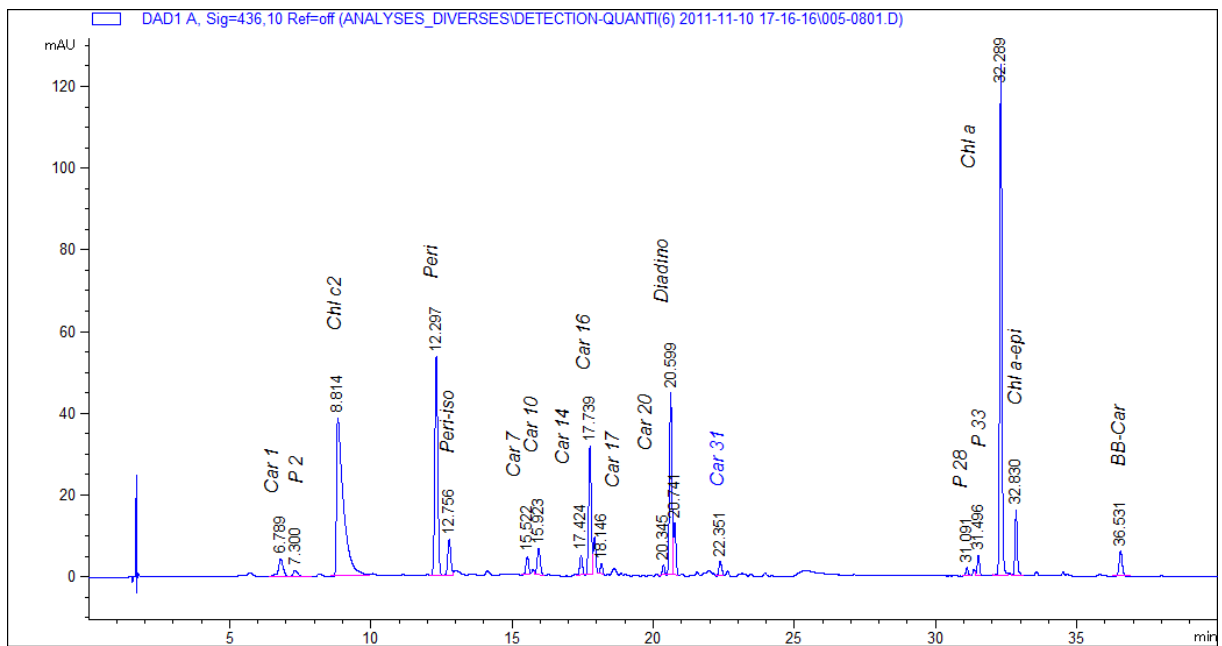


*Rhodomonas salina* CCAP 978/27

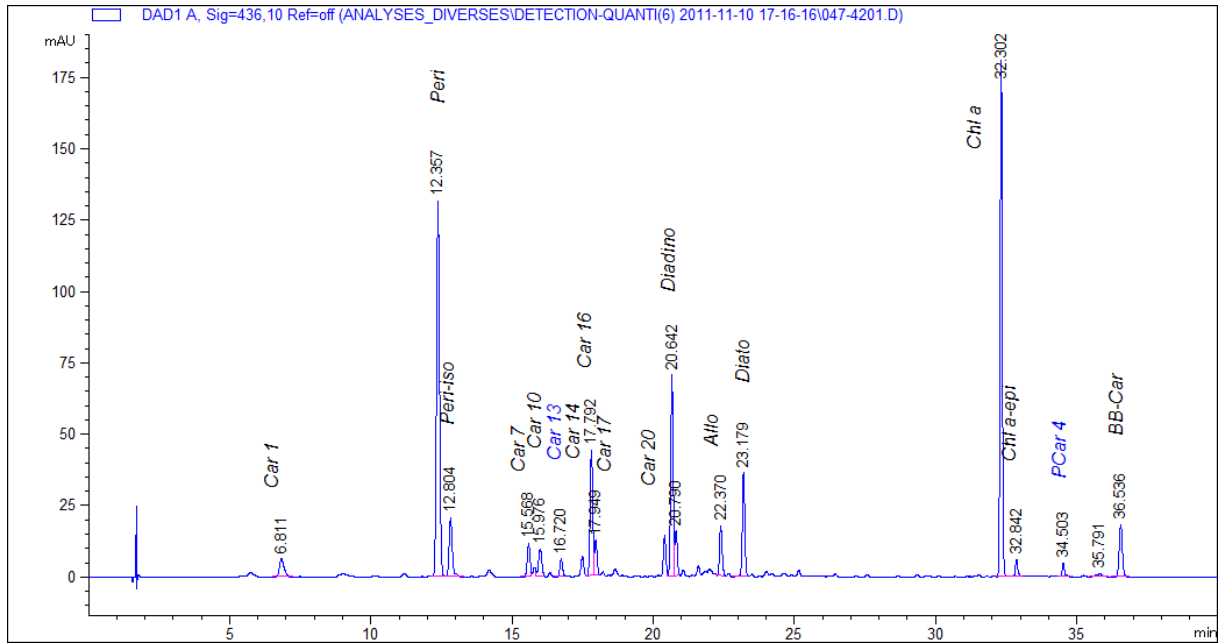




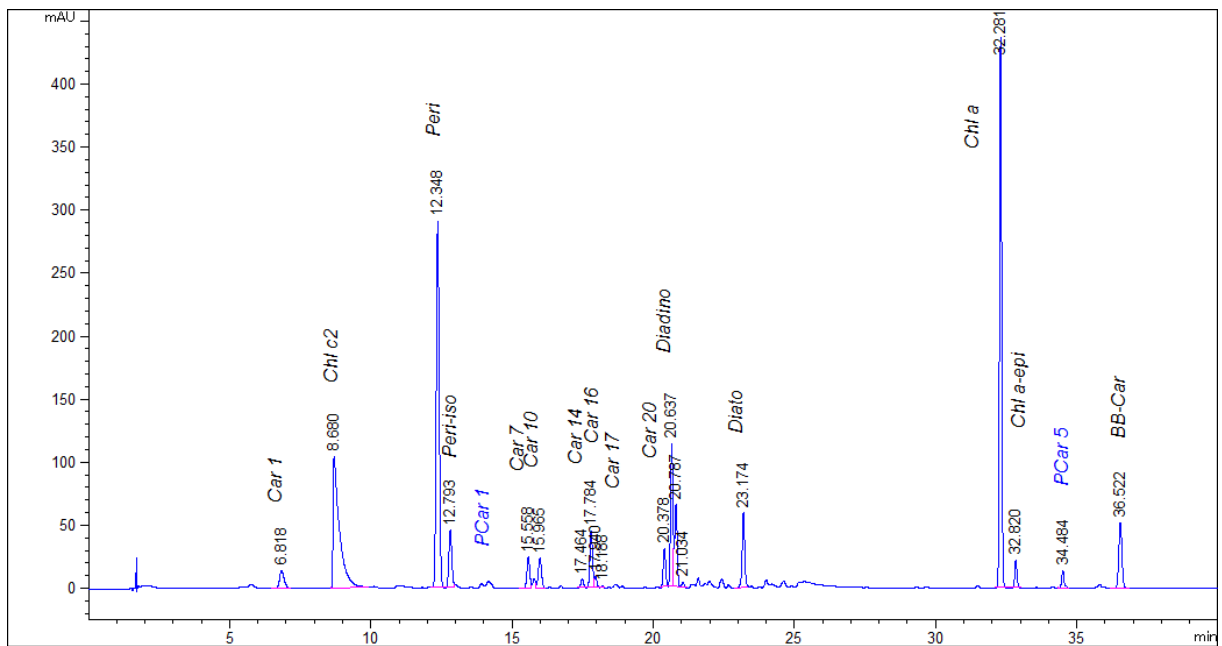
*Alexandrium tamarensis* MOG 835 (toxic)



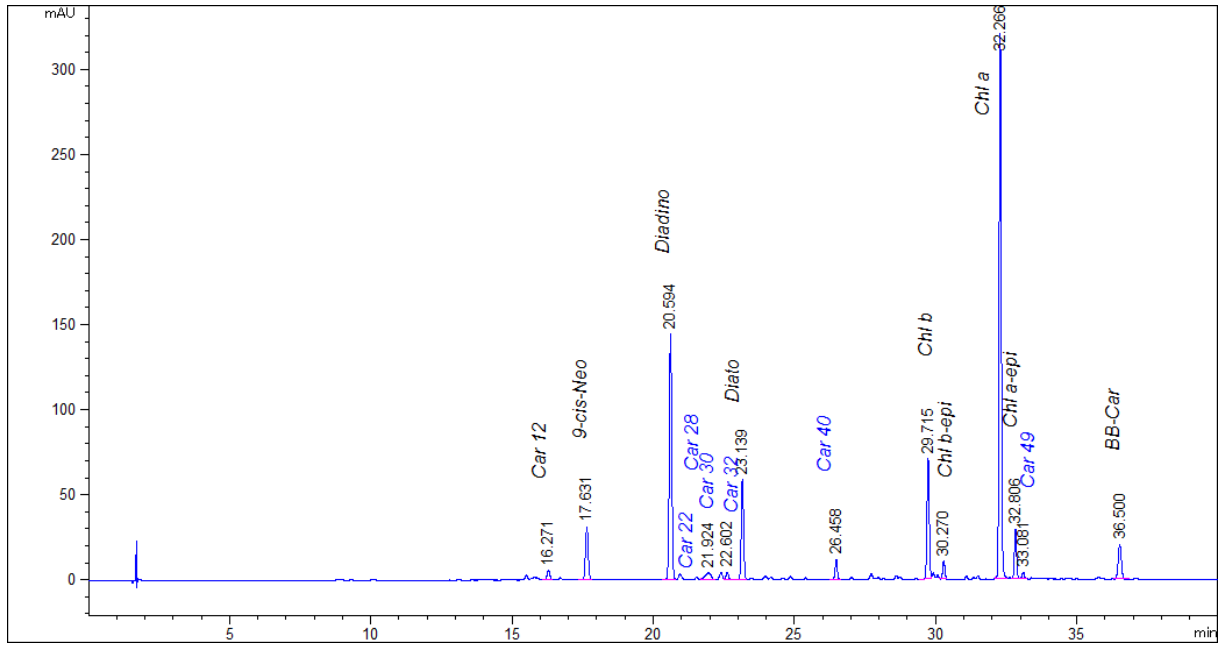
*Alexandrium tamarensis* PLY 497A (non toxic)



***Alexandrium minutum* CM 1002 (non toxic)**



***Alexandrium minutum* AM89BM (Toxic)**



*Euglena proxima* SAG 1224-11a