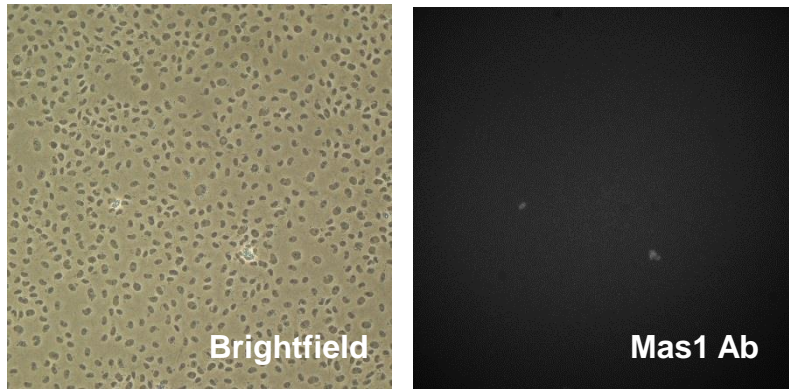
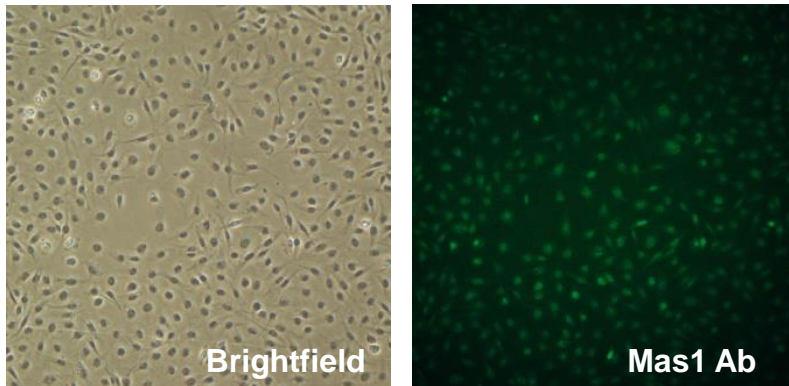


Non-Permeabilized RMVEC Mas1 Antibody Staining

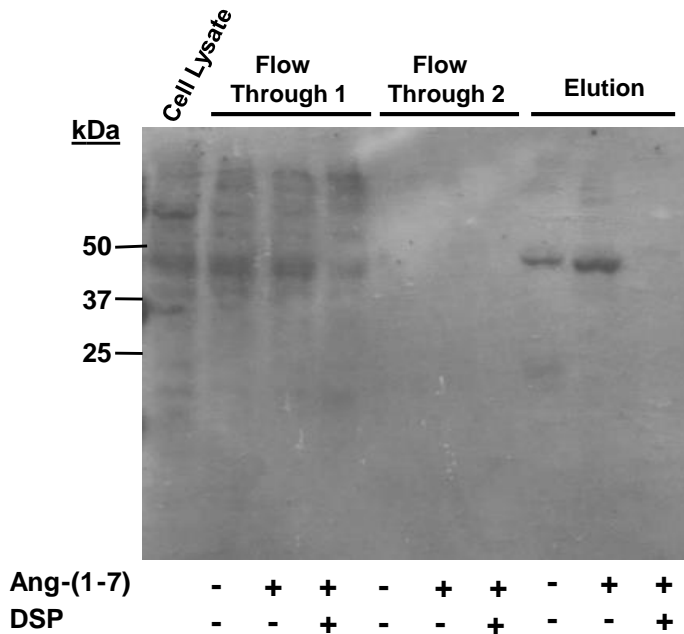


Permeabilized RMVEC Mas1 Antibody Staining



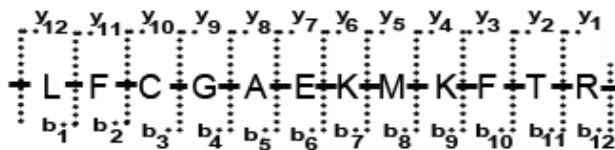
Supplemental Figure I. Permeabilized rat microvascular endothelial cells (RMVECs) were imaged by phase contrast brightfield and stained using the Mas1 receptor antibody. Non-permeable RMVECs showed no recognition.

A Mas1 Immuno-precipitation Antibody Staining

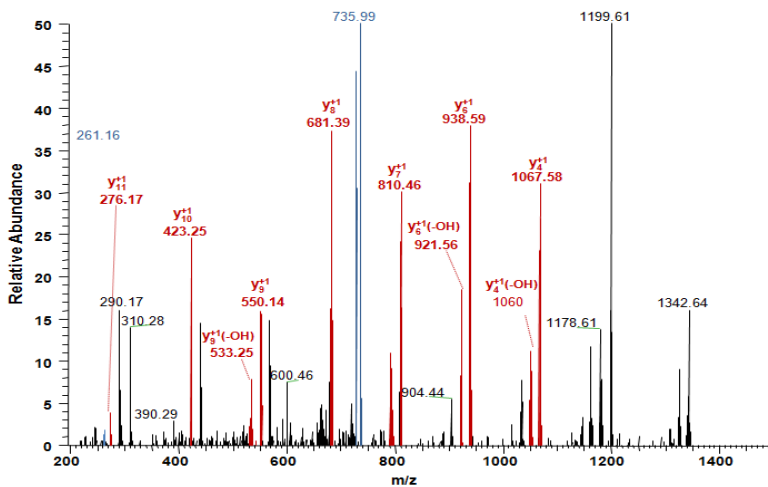


B

Predicted MAS1 Peptide Ion Series



Detected MAS1 Peptide Ion Series



Supplemental Figure II. (A) Immuno-blot of the Mas1 immunoprecipitations from Ang-(1-7) stimulated and unstimulated rat microvascular endothelial cells and their respective flow throughs as indicated above/below the image. (B) Predicted and detected Mas1 mass spectra from the Ang-(1-7) stimulated immuno-precipitation is indicated.

Supplemental Table I. Comparison data from Ang-(1-7) stimulated Mas1 immunoprecipitation versus the non-stimulated Mas1 immunoprecipitation after application of filters described in the methods.

Annotation	Description	Total Peptides	Ang-(1-7) Stim. MAS1 IP Scan Count	No Stim. MAS1 IP Scan Count	NormLog 2Ratio	norm p-value
Mov10l1	Putative helicase Mov10l1	12	63	9	-2.342568	4.3E-08
Adamts16	A disintegrin and metalloproteinase with thrombospondin motifs 16	22	54	20	-0.968172	0.00736
AGTR1	Type-1 angiotensin II receptor	2	19	26	0.9173	0.03368
Ang2	Angiogenin-2 precursor	4	102	0	1 only	5.41E-26
Apc	Adenomatous polyposis coli protein	55	62	29	-0.631428	0.04649
Arhgap33	TC10/CDC42 GTPase-activating protein	11	57	25	-0.724246	0.03133
Card10	Caspase recruitment domain-containing protein 10	18	35	14	-0.857141	0.0513
cb054	Uncharacterized protein C2orf54 homolog	2	29	0	1 only	1.9E-08
Cct7	T-complex protein 1 subunit eta	16	34	13	-0.922236	0.0411
Cd19	B-lymphocyte antigen CD19	3	30	0	1 only	1.1E-08
Cilp	Cartilage intermediate layer protein 1	20	60	14	-1.634748	2.3E-05
Cit	Citron Rho-interacting kinase	37	54	24	-0.705138	0.04063
Cldn11	Claudin-11	5	25	0	1 only	1.8E-07
Clta	Clathrin light chain A	7	57	22	-0.908671	0.009
Cntn2	Contactin-2	13	76	35	-0.653857	0.02301
COL17A1	Collagen alpha-1(XVII) chain	24	36	12	-1.120175	0.01378
Csgalnact2	Chondroitin beta-1,4-N-acetylgalactosaminyltransferase 2	3	29	9	-1.223269	0.01782
Cyc1	Cytochrome c1, heme protein	11	27	9	-1.120175	0.03293
Cyp4a12a	Cytochrome P450 4A12	7	26	4	-2.235652	0.00062
Diaph2	Protein diaphanous homolog 2	17	32	9	-1.365288	0.00677
Eif2d	Ligatin (EIF2D)	12	27	8	-1.2901	0.01721
Eppk1	Epiplakin	50	128	36	-1.365288	6.1E-08
Fgd6	FYVE, RhoGEF and PH domain-containing protein 6	19	51	13	-1.507198	0.00023
Fis1	Tetratricopeptide repeat protein 11	5	26	0	1 only	1E-07
Flna	Filamin-A	134	1329	770	-0.322623	6.3E-07
Flt3	Receptor-type tyrosine-protein kinase FLT3	7	60	28	-0.634748	0.04911
Gfap	Glial fibrillary acidic protein	7	148	55	-0.963306	1E-05
Grin1	Glutamate receptor ionotropic, NMDA 1	16	43	14	-1.154122	0.00584
Grip1	Glutamate receptor-interacting protein 1	16	28	10	-1.020639	0.0439
Klk1b24	Glandular kallikrein K24 precursor	2	37	0	1 only	2.1E-10

Klra8	Killer cell lectin-like receptor 8	7	64	26	-0.834773	0.00996
Matn2	Matrilin-2 precursor	18	162	41	-1.517511	4.4E-11
Mical1	Protein-methionine sulfoxide oxidase	12	67	23	-1.07774	0.00112
Mrgpra	Mas-related G-protein coupled receptor member A	4	13	0	1 only	0.00017
Mtor	Mammalian target of rapamycin (MTOR)	29	53	16	-1.263133	0.00102
Notch4	Neurogenic locus notch homolog protein 4	31	33	8	-1.579607	0.0022
Ppp1r3a	Protein phosphatase 1 regulatory subunit 3A	13	93	46	-0.55081	0.03089
Prkd1	Protein kinase D1	13	25	5	-1.857141	0.00287
Pskh1	Serine/threonine-protein kinase H1	12	52	20	-0.913724	0.01219
Rasal1	RasGAP-activating-like protein 1	13	66	32	-0.579607	0.05698
Rasgrf1	Ras-specific nucleotide exchange factor CDC25	27	26	9	-1.065727	0.04432
Rp1	Oxygen-regulated protein 1	34	56	23	-0.819006	0.01769
Rwdd2b	Protein C21orf6 homolog	4	74	0	1 only	2.7E-19
Scel	Sciellin	14	27	9	-1.120175	0.03293
Serpina3k	Contrapsin-like protease inhibitor 1 precursor	7	32	5	-2.213285	0.00016
Skor1	Ladybird homeobox corepressor 1	19	34	12	-1.037713	0.02441
Tnfsf10	Tumor necrosis factor ligand superfamily member 10	3	68	13	-1.922236	4.9E-07
Trpm6	Transient receptor potential cation channel subfamily M member 6	23	26	7	-1.428297	0.01158
Ywhaq	14-3-3 protein theta (14-3-3 protein tau)	6	47	0	1 only	8.2E-13
Zfyve16	Zinc finger FYVE domain-containing protein 16	16	36	6	-2.120175	9.7E-05