

Long non-coding RNA PVT1 activates hepatic stellate cells through competitively binding microRNA-152

Supporting Material

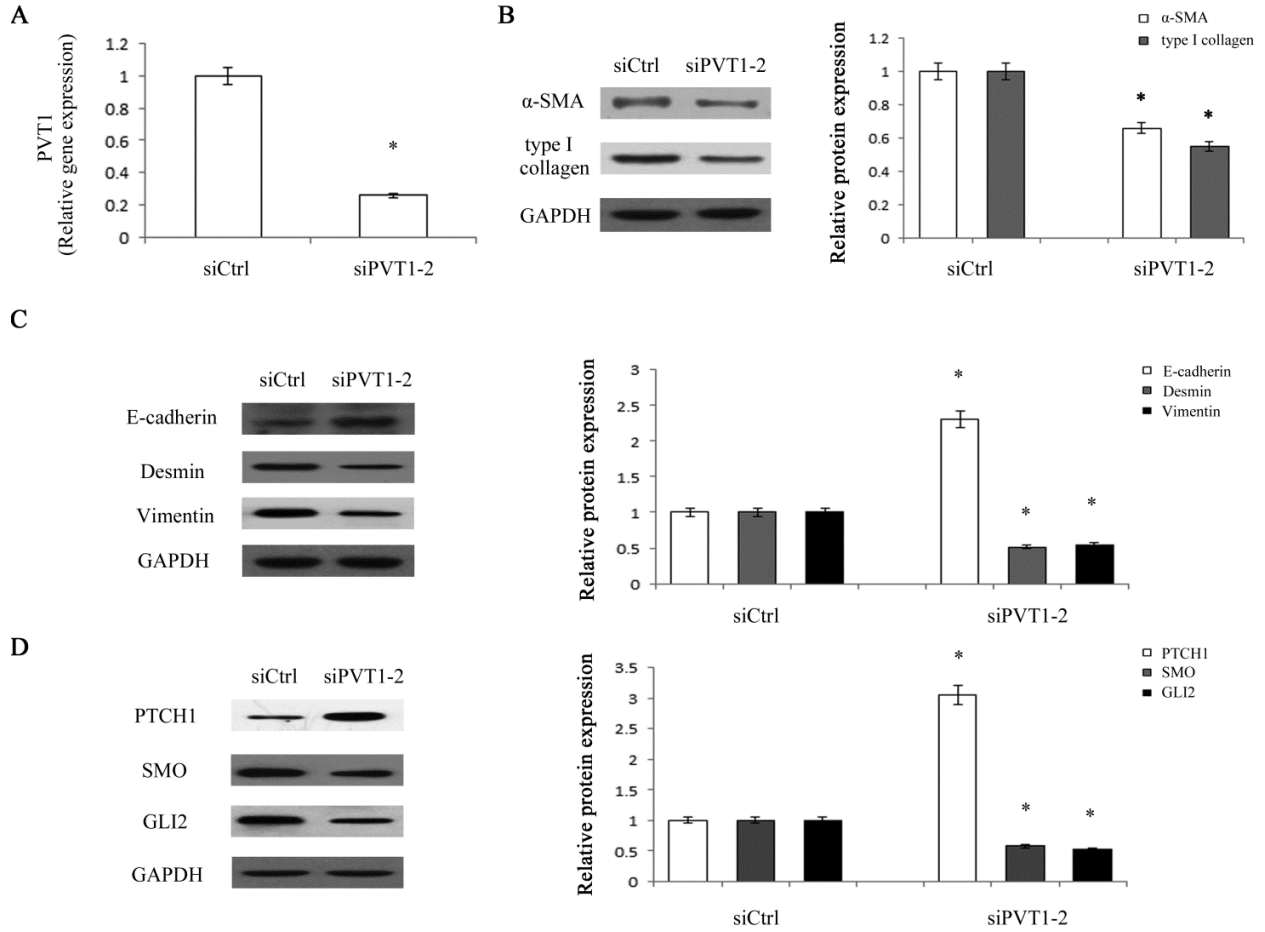


Fig.S1 Effects of siPVT1-2 on HSC activation, EMT process and Hh pathway. (A) PVT1 expression was detected by qRT-PCR in primary HSCs transfected with siPVT1-2. (B) The protein expression levels of α -SMA and type I collagen were analyzed in primary HSCs transfected with siPVT1-2. (C) The protein levels of E-cadherin, desmin and vimentin were analyzed were analyzed in primary HSCs transfected with siPVT1-2. (D) The protein levels of PTCH1, SMO and GLI2 were analyzed were analyzed in primary HSCs transfected with

siPVT1-2. GAPDH was used as internal control. * $P < 0.05$ compared to the control. Each value is the mean \pm SD of three experiments.

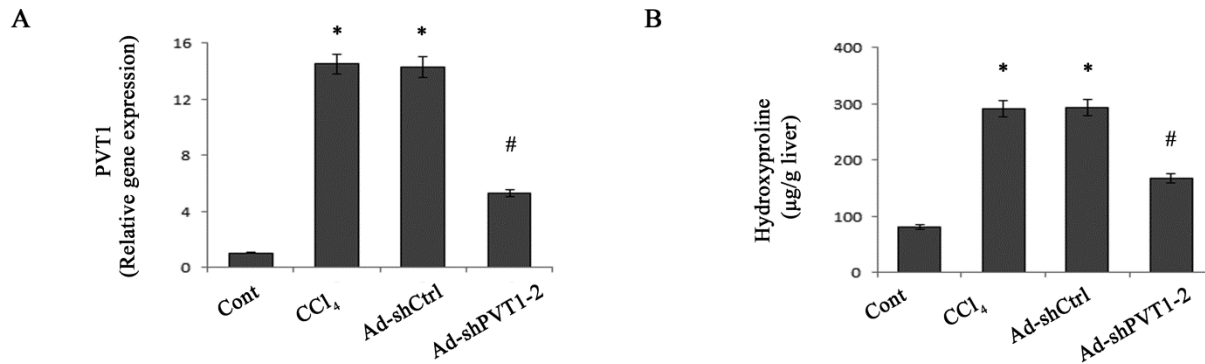


Fig.S2 Silencing PVT1 by Ad-shPVT1-2 inhibits collagen expression in CCl₄ mice. (A) Relative gene expression of PVT1 was analyzed by qRT-PCR. (B) The level of hydroxyproline was detected in CCl₄ mice after Ad-shPVT1-2 treatment. * $P < 0.05$ compared to the control and # $P < 0.05$ compared to the CCl₄ group. Each value is the mean \pm SD of three experiments.

Table.S1 Primer sequences

Gene	Forward sequence	Reverse sequence
PVT1 transcript variant 1	5'-CCTGGATGCCCACTGAAAAC-3'	5'-GATAGACTGCTTGCCAGGGG-3'
PVT1 transcript variant 2	5'-GAGCTCCAAGTGGGACTTCT-3'	5'-GGAGGGCATCTTCTTACCGT-3'
PVT1 transcript variant 3	5'-CATGCCGGAGGCAATCCTAT-3'	5'-AAAACCACACTGGAGAGCCG-3'

Table.S2 Antibodies used in Western blotting

Antigens	Poly/monoclonal	manufacturer	Dilution
GAPDH	Monoclonal	Abcam,Cambridge, MA (ab8245)	1:2000
Type I collagen	Monoclonal	Abcam,Cambridge, MA (ab6308)	1:1000
α -SMA	Monoclonal	Abcam,Cambridge, MA (ab7817)	1:1000
E-cadherin	Monoclonal	Abcam,Cambridge, MA (ab76055)	1:1500
Desmin	Polyclonal	Abcam,Cambridge, MA (ab15200)	1:1000
Vimentin	Monoclonal	Abcam,Cambridge, MA (ab8978)	1:1500
PTCH1	Polyclonal	Abcam,Cambridge, MA (ab53715)	1:1500
SMO	Polyclonal	Abcam,Cambridge, MA (ab38686)	1:1500
GLI2	Polyclonal	Abcam,Cambridge, MA (ab26056)	1:1500
IRDye800-conjugated rabbit anti-mouse IgG	Polyclonal	Rockland, Limerick (610-431-002)	1:2000
IRDye800-conjugated goat anti-rabbit IgG	Polyclonal	Rockland, Limerick (611-131-002)	1:2000