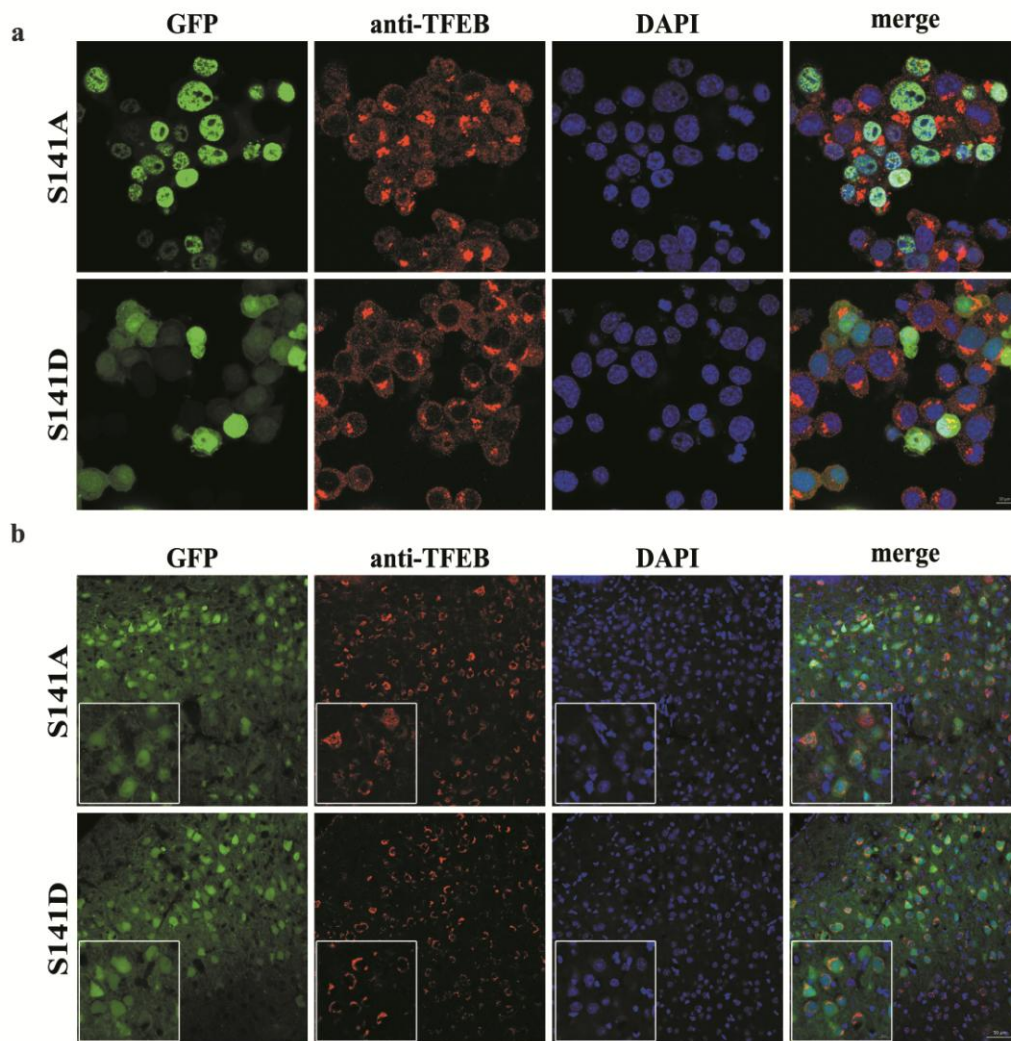


**Supplemental Material to:**

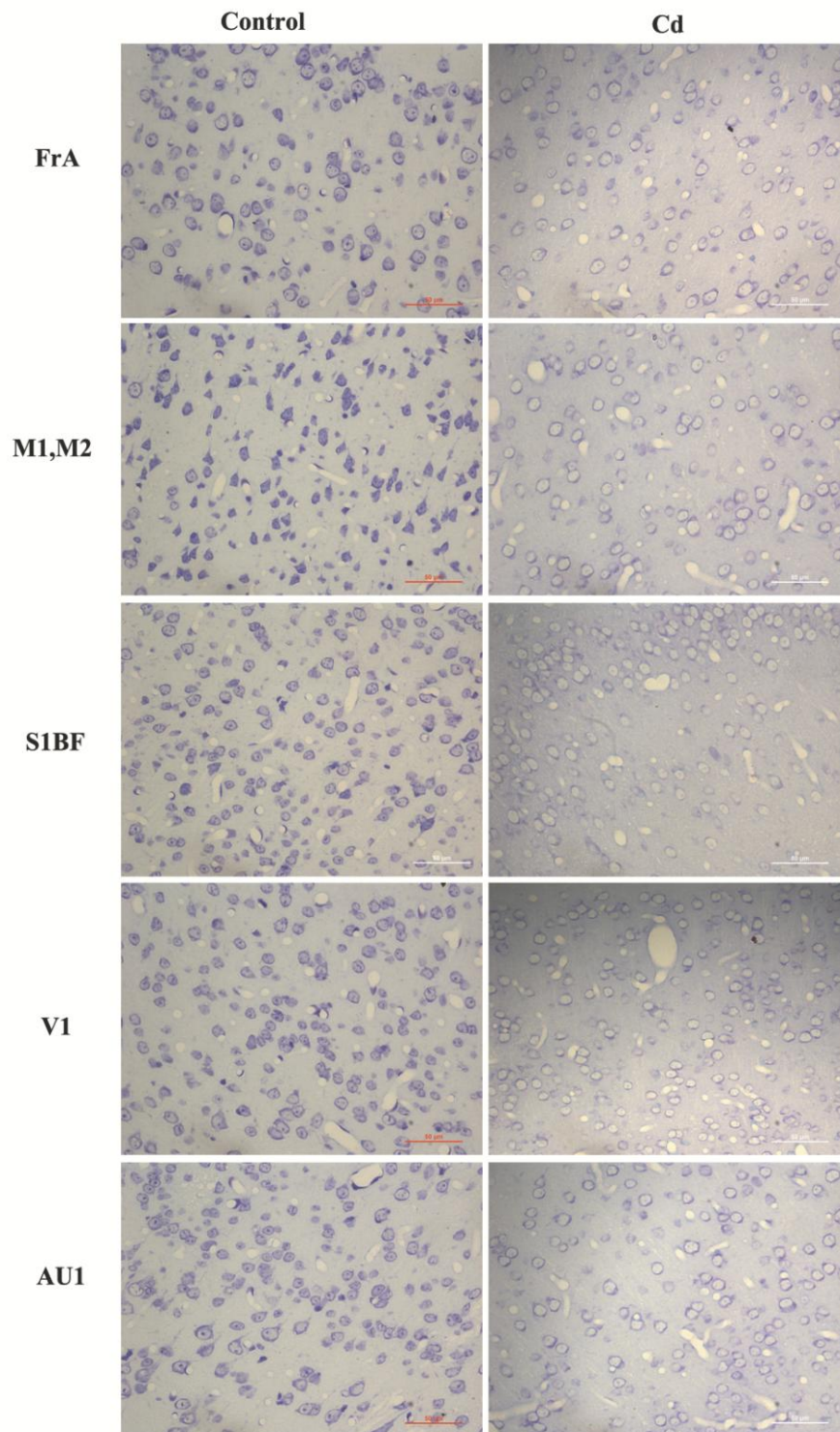
**Enhancing lysosomal biogenesis and autophagic flux**

**by activating the transcription factor EB protects against  
cadmium-induced neurotoxicity**

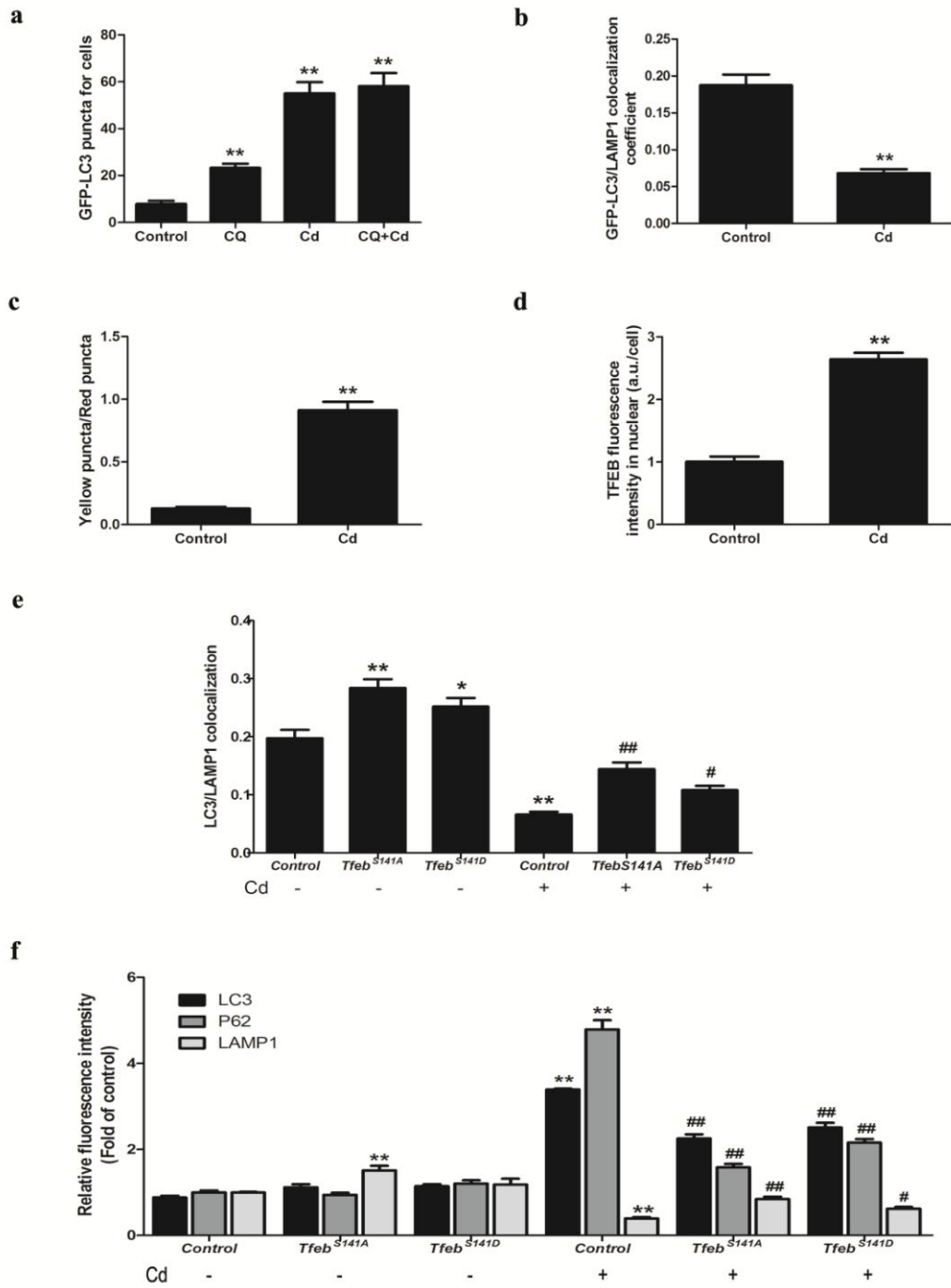
**Huifeng Pi, Min Li, Li Tian, Zhiqi Yang, Zhengping Yu, Zhou Zhou**



**Figure S1.** The *Tfeb*<sup>S141A</sup> mutant nearly translocates into nucleus; conversely, the mutant *Tfeb*<sup>S141D</sup> is unable to translocate into the nucleus. Immunofluorescence of **A.** Neuro-2a cells and **B.** brain tissue with anti-TFEB antibody and DAPI. Panels on the left are high magnifications.



**Figure S2.** Cd exposure leads to extensive damage in the cerebral cortices of mice. Nissl staining of the brain tissue.



**Figure S3.** Quantification of immunocytochemical analysis of Neuro-2a cells and in mouse brain tissue. **(a)** Quantification of Fig. 2c. **(b)** Quantification of Fig. 3a. **(c)** Quantification of Fig. 3b. **(d)** Quantification of Fig. 5c. **(e)** Quantification of Fig. 6b. **(f)** Quantification of Fig. 7a-c.