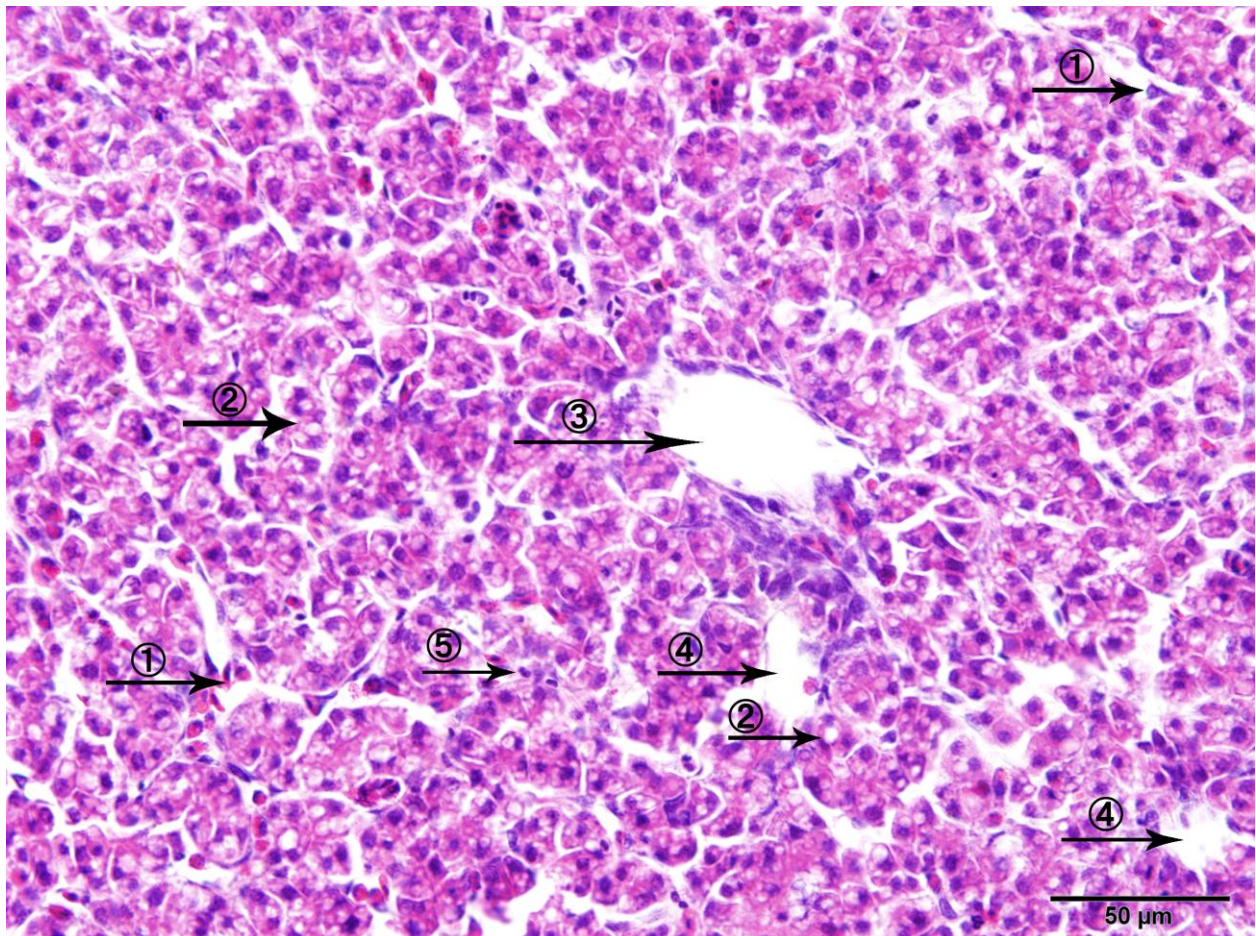
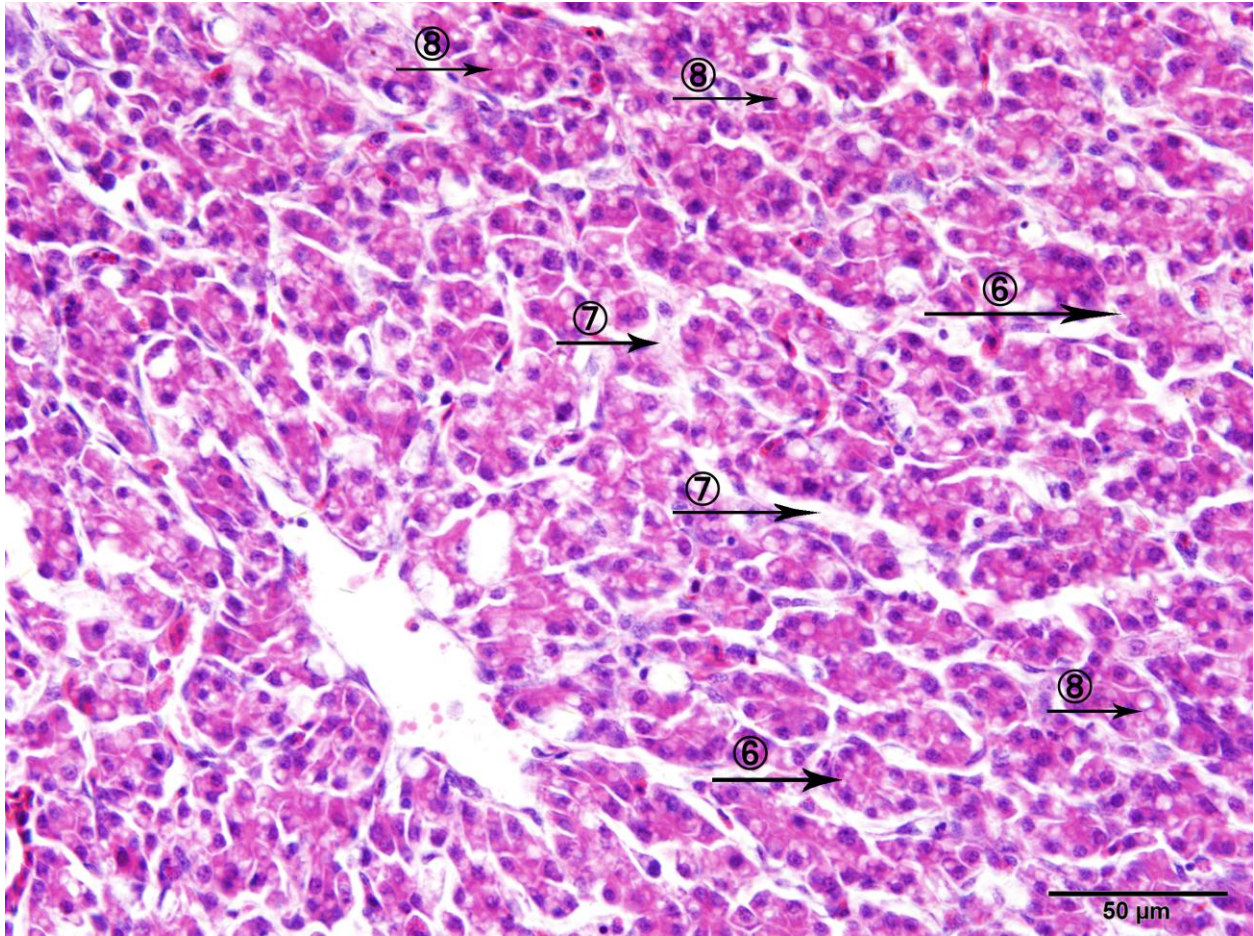


**Additional file 1:** Images of Fig. 1a at 6h, 12h, 24h and 72h post LPS stimulation



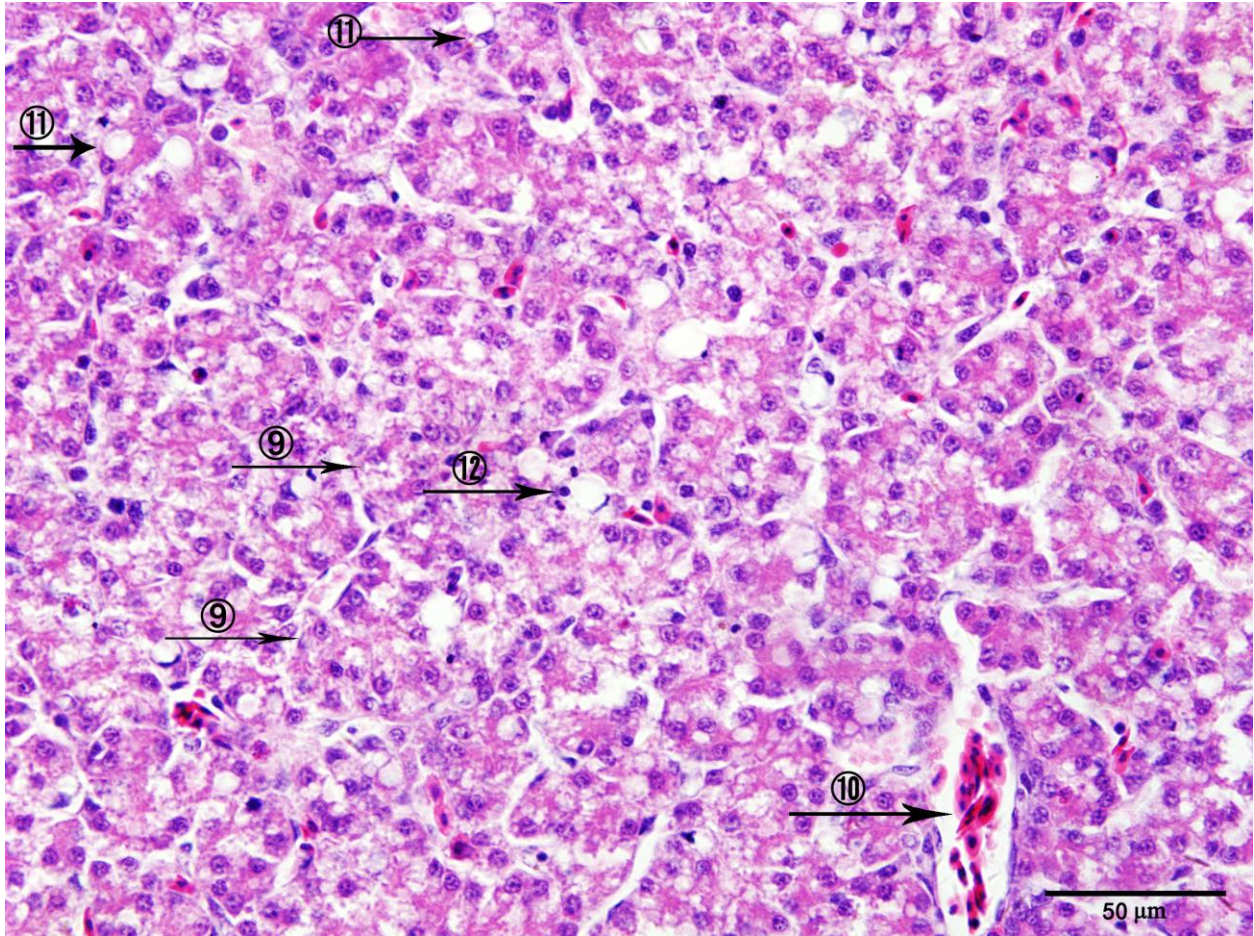
**Fig. 1a (at 6 h post LPS stimulation) H&E staining**

Enhanced stellate macrophages (Kupffer cells) in perisinusoidal areas ①, diffuse infiltration of fat vacuoles indicating fatty infiltration ②, Central veins ③ and sinusoidal capillaries ④ were both dilated, reduction in size of a few hepatocytes ⑤.



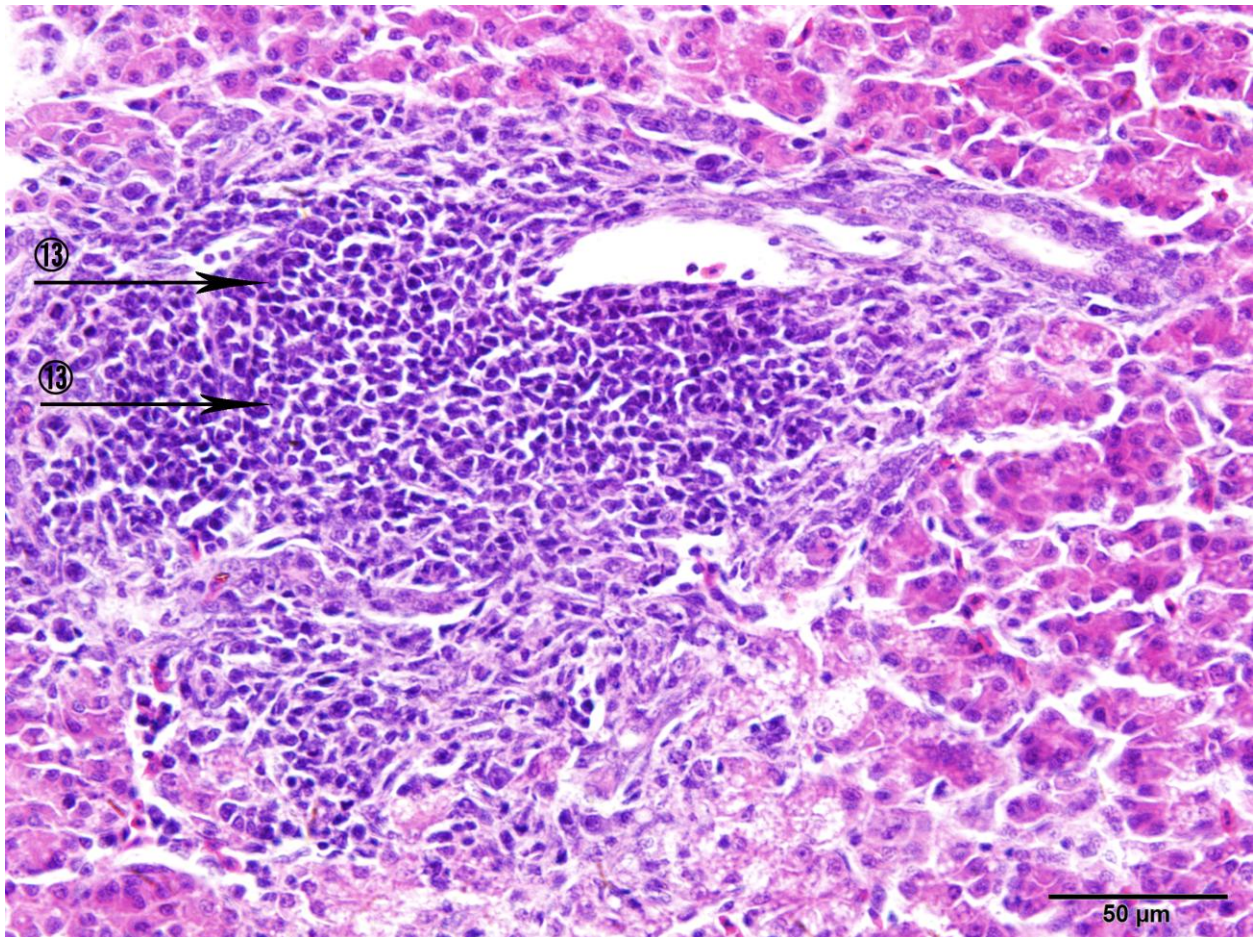
**Fig. 1a (at 12 h post LPS stimulation) H&E staining**

Liver cells were seen dissociated from each other in hepatic cords (6), Hepatic sinusoids were dilated at many places along with fibrocytes proliferation in perisinusoidal areas (7), Intracytoplasmic infiltration of variable size and shape fat vacuoles (8)



**Fig. 1a (at 24 h post LPS stimulation) H&E staining**

Hepatic sinusoids were dilated at many places (9), infiltration of oval shaped nucleated RBCs showing vascular congestion (10) cytoplasmic fat vacuoles have pushed hepatocyte nuclei towards periphery at some places (11) and reduction in size of a few hepatocytes (12).



**Fig. 1a (at 72 h post LPS stimulation) H&E staining**

Obvious pathological changes (inflammatory cells infiltration around the portal area) ⑬