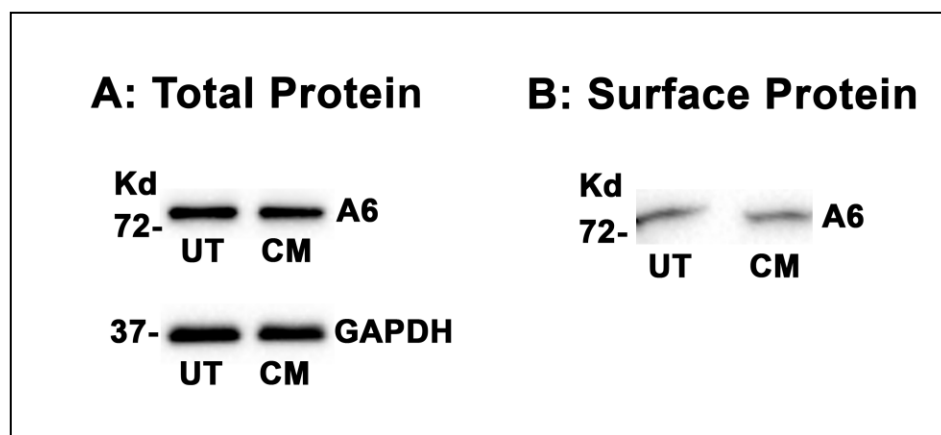


Supplemental Figure 1. Effect of Of CM on total (A) and surface (B) SLC26A6 (A6) protein expression in Caco2-BBE (C2) cells. **A:** A representative Western blot analysis of total A6 protein. C2 cells were untreated (UT) or apically treated with the conditioned medium (CM) in the culture medium (1:50 dilution x 24 h), and then A6 protein expression was evaluated in the cell lysate (10 µg protein/lane). The lower half of the same blot was probed with an anti-GAPDH antibody to verify equal loading of protein in each lane (lower panel). Five other blots showed similar results. The CM has no effect on total A6 protein expression. **B:** A representative Western blot analysis of surface A6 protein. C2 cells were untreated (UT) or apically treated with the conditioned medium (CM) in the culture medium (1:50 dilution x 24 h), and then A6 surface protein expression was evaluated after streptavidin precipitation of surface biotinylated proteins from 1200 µg of initial cell lysate. Three other blots showed similar results. The CM has no effect on surface A6 protein expression.



Supplemental Figure 2. Histology of distal colonic tissues from untreated (UT), OM-treated (OM), and CM-treated (CM) PH1 mice. H&E-stained sections (4 μ m thick) were observed under a light microscope. Compared to UT, distal colonic histology from OM - and CM-treated mice looks normal, with no evidence of injury, irritation, or inflammation. Scale bar: 200 μ M.

