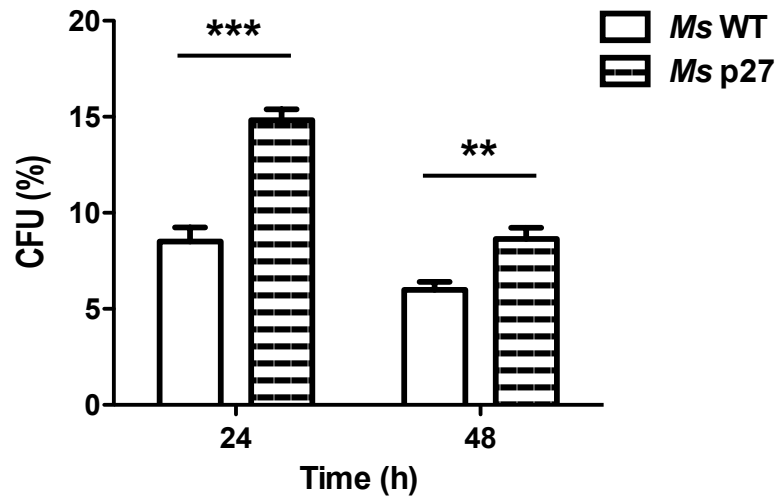


Supplementary Figure 2



Supp. Figure 2: Survival of *M. smegmatis* wild type and the strain overexpressing P27 in HeLa cells. HeLa cells were infected with *M. smegmatis* wild type and *M. smegmatis* overexpressing P27 (*Ms p27*) for 1 h of uptake, followed by 24 h and 48 h of chase. Then cells were lysed and CFU determined. Data represent the Mean \pm S.E.M of three independent experiments. Asterisks show significance (**) $p \leq 0.01$, (***) $p \leq 0.001$ using two-tailed Student's t-test.