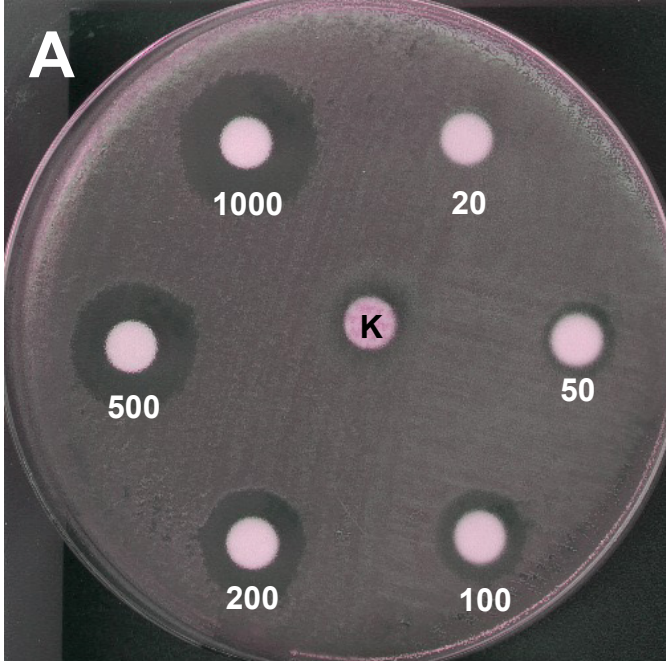
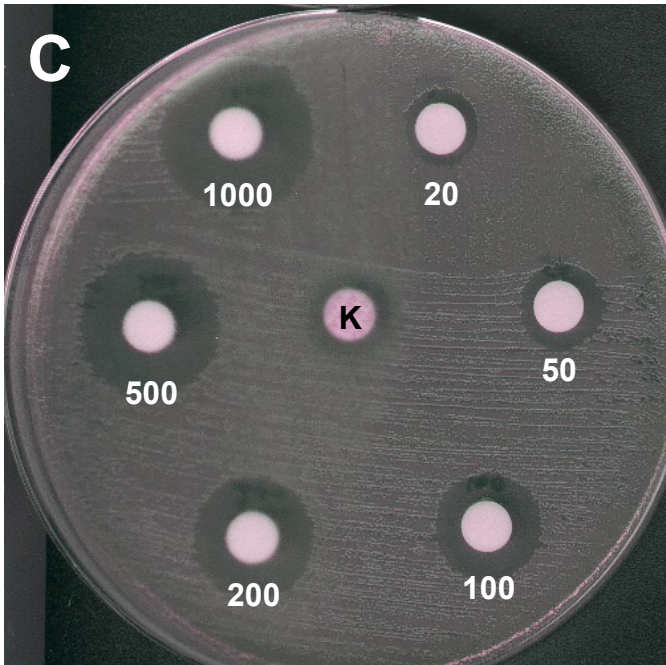
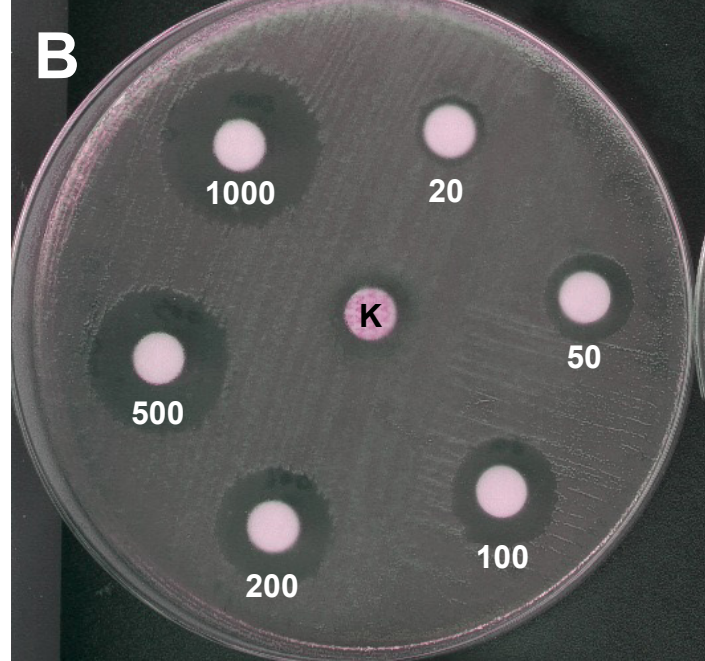


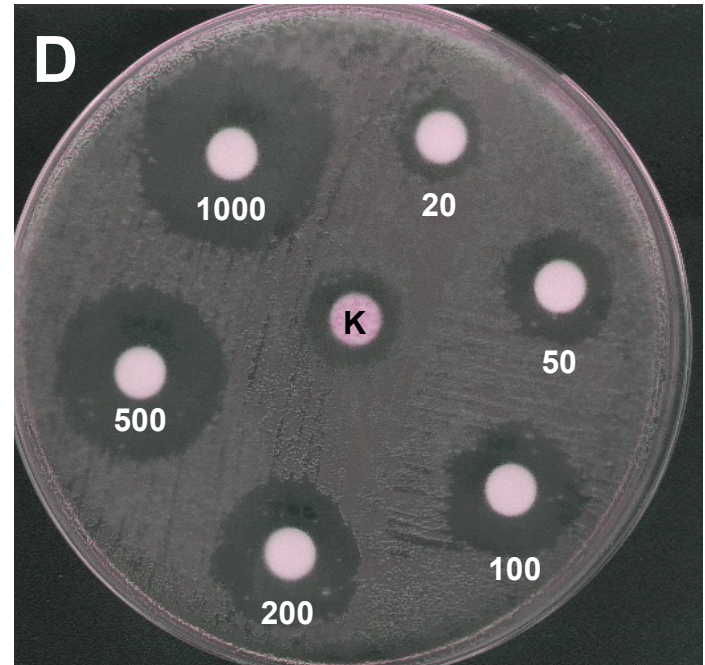
IMP = 0 mg/L



IMP = 0.01 mg/L



IMP = 0.1 mg/L



IMP = 1 mg/L

Figure S1. Zeocin susceptibility of the pCR2.1 $P_{\text{NDM-1}}\text{-bla}_{\text{NDM-1}}\text{-ble}_{\text{MBL}}$ *E. coli* TOP10 clone by disc diffusion method. White numbers (20, 50, 100, 200 and 1000) represent the quantity (μg) of zeocin with which the discs have been impregnated. The pCR2.1 $P_{\text{NDM-1}}\text{-bla}_{\text{NDM-1}}\text{-ble}_{\text{MBL}}$ *E. coli* TOP10 clone was grown on Mueller-Hinton medium supplemented with imipenem at 0 (Panel A), 0.01 (Panel B), 0.1 (Panel C) and 1 mg/l (Panel D), respectively. K, Kanamycin at 30 μg (antibiotic marker of the pCR2.1 plasmid).

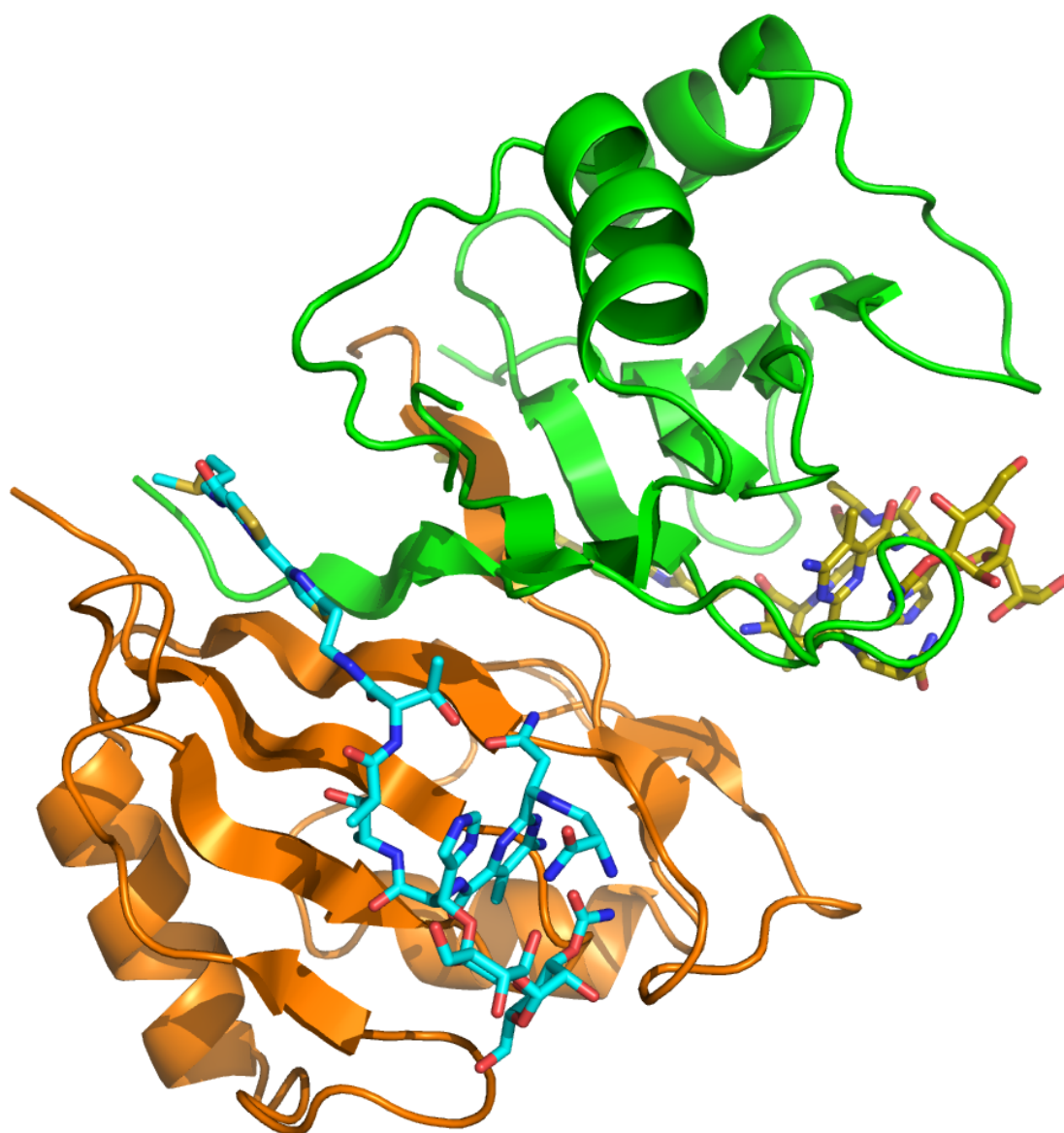


Figure S2. Secondary structure representation of the BRP_{MBL} model in complex with two bleomycin molecules (stick representation). Chains A and B are colored in orange and green, and the corresponding bleomycin ligands in cyan and yellow, respectively.