

Supplemental Materials

Molecular Biology of the Cell

Gao et al.

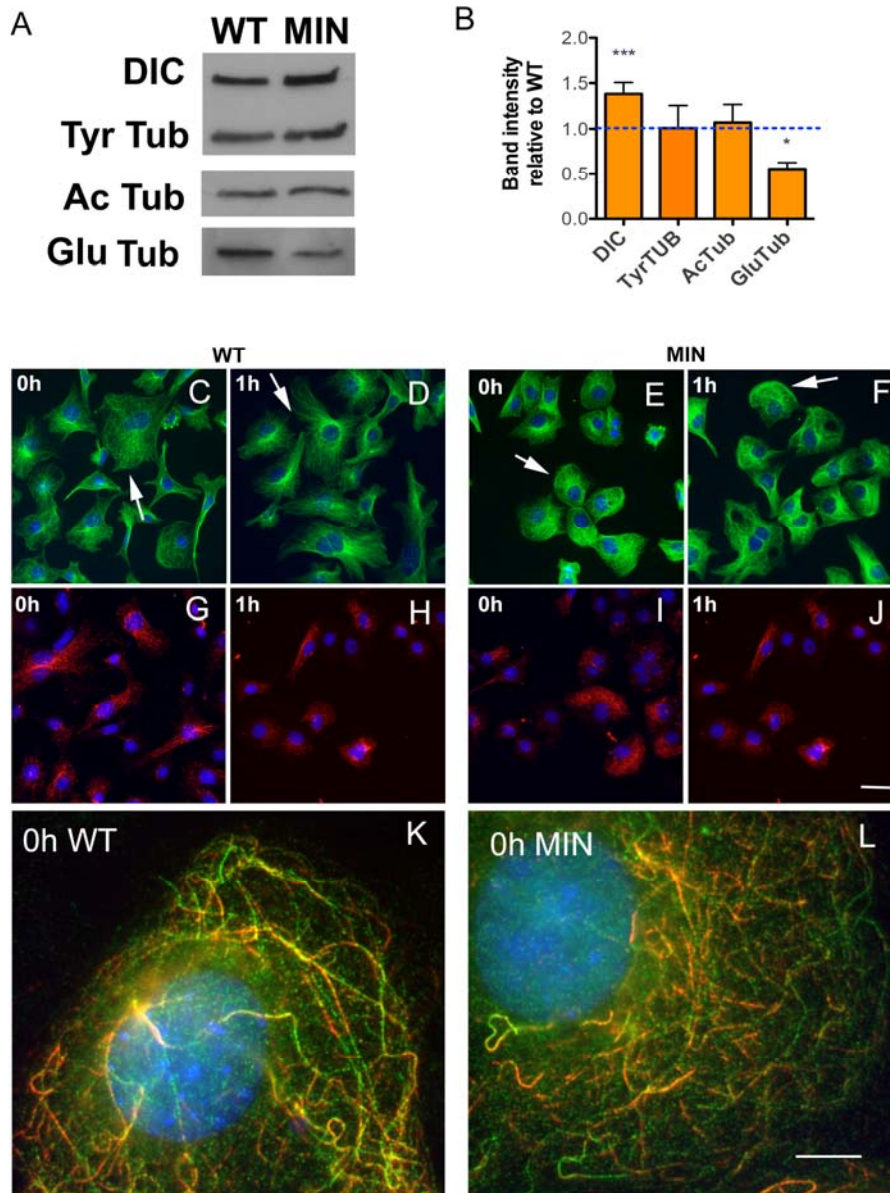


Figure S1: A. Comparison of tubulin modifications in WT vs. MIN cells. Western blot of extracts from WT and MIN cells probed for DIC, tyrosinated tubulin (Tyr Tub), acetylated tubulin (Ac Tub) and deetyrosinated tubulin (Glu Tub). **B.** Band intensity was measured for 3 separate experiments. The graph shows the ratio of MIN to WT levels for each antibody in A. The data are shown as the average \pm 95% CI, and statistical differences determined by ANOVA of three separate experiments. $*=p<0.05$, $***=p<0.001$. **C-F.** WT (left) and MIN cells (right) stained for tyrosinated tubulin at 0 and 1 hour after insulin. **G-J.** WT (left) and MIN cells (right) stained for acetylated tubulin at 0 and 1 hour after insulin. **K-L.** WT (left) and MIN cells (right) stained for acetylated and deetyrosinated tubulin. Scale bar for C-J = 25 μ m. Scale bar for K and L = 2.5 μ m.