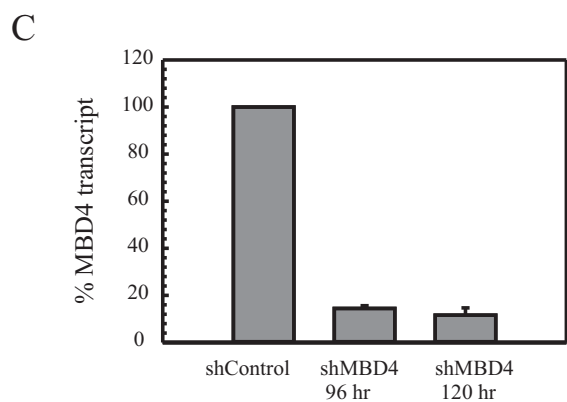
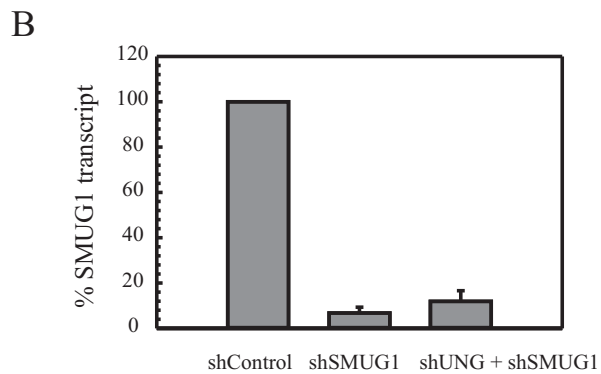
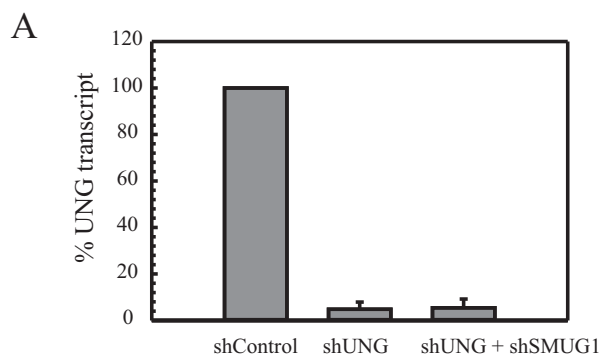
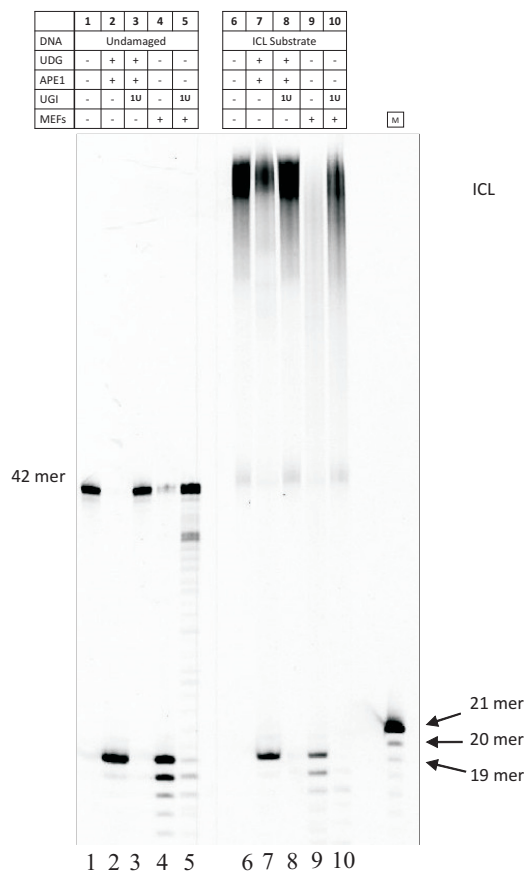


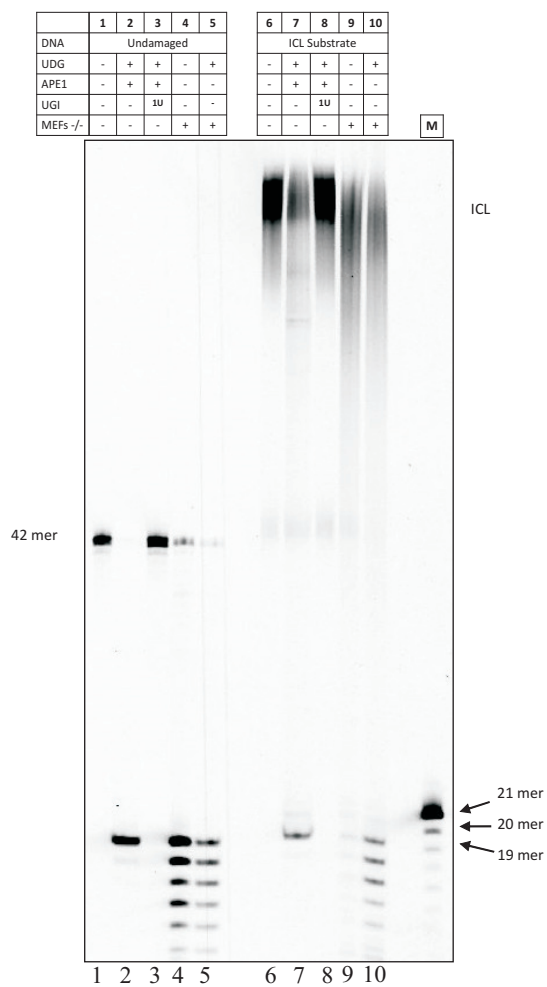
Supplementary Figure S1



D *In vitro* glycosylase assay with MEFs for Undamaged DNA and ICL uracil substrate

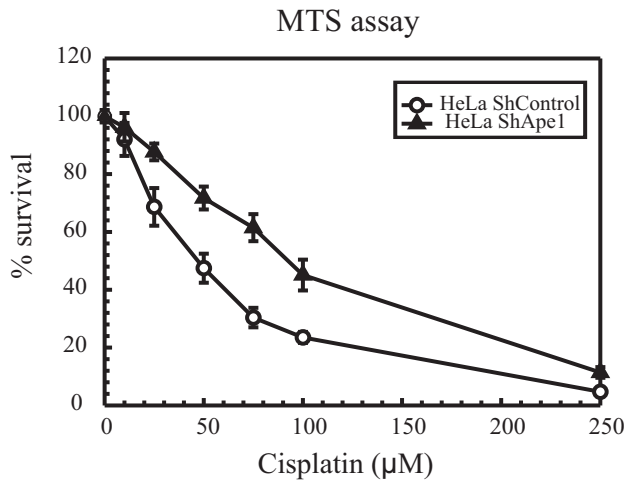


E *In vitro* glycosylase assay with UNG^{-/-} MEFs for Undamaged DNA and ICL uracil substrate

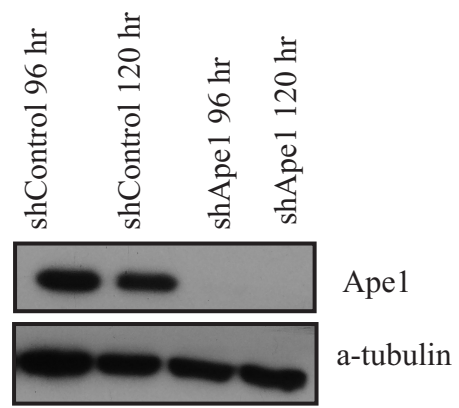


Supplementary Figure S2

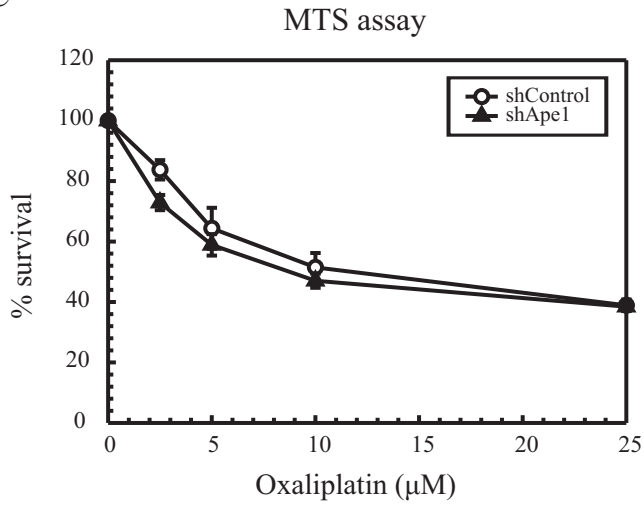
A



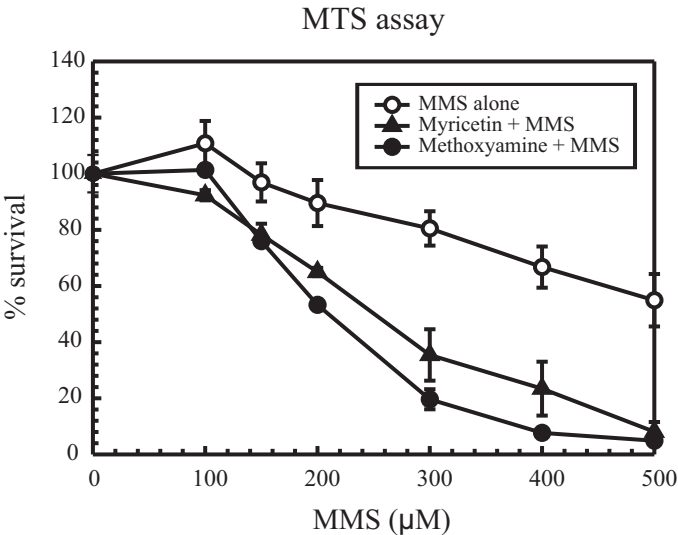
B



C

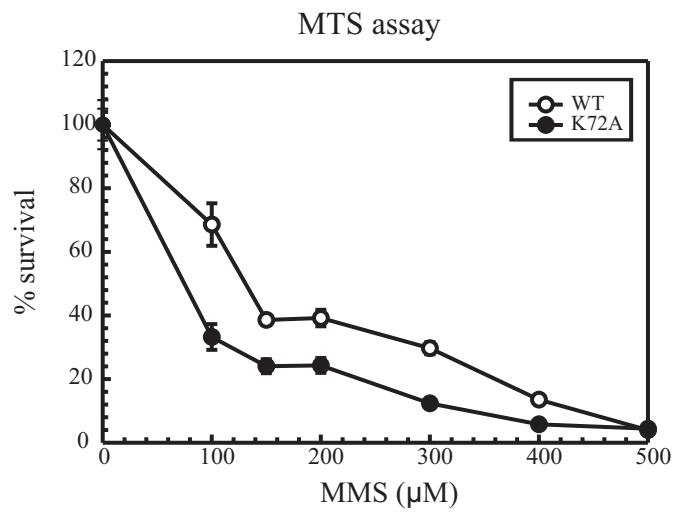


Supplementary Figure S3

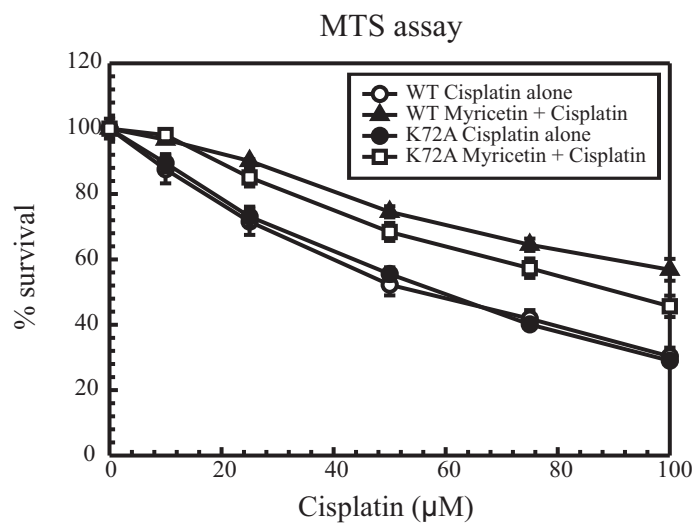


Supplementary Figure S4

A



B



Supplementary Figure S5

