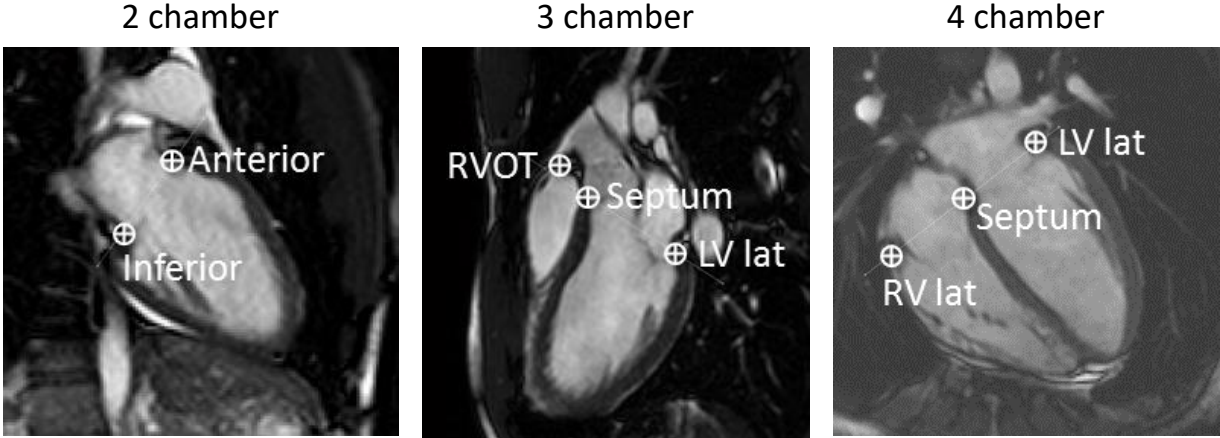


# Results of parameter optimization



Schematic drawing and naming of points in each long-axis view used by the algorithm.

| Long-axis view | Point    | ROI size [mm] | ROS size [mm] |
|----------------|----------|---------------|---------------|
| 2 chamber      | Inferior | 5             | 9             |
| 2 chamber      | Anterior | 7             | 12            |
| 3 chamber      | Septum   | 9             | 17            |
| 3 chamber      | LV lat   | 7             | 26            |
| 3 chamber      | RVOT     | 7             | 23            |
| 4 chamber      | Septum   | 5             | 11            |
| 4 chamber      | LV lat   | 10            | 12            |
| 4 chamber      | RV lat   | 7             | 13            |

Optimization results for the length of the side of the region of interest (ROI) and region of search (ROS) squares in mm, according to long-axis views and point naming in the figure above.