

# Cancer burden in Slovenia with the time trends analysis

Vesna Zadnik, Maja Primic Zakelj, Katarina Lokar, Katja Jarm, Urska Ivanus, Tina Zagar

doi:10.1515/raon-2017-0008

## contents (click to title for quick access)

- 2 [Supplementary material 1.  
Basic epidemiologic data on cancer ALL CANCER SITES \(C00-C96\)](#)
- 3 [Supplementary material 2.  
Basic epidemiologic data on cancer SKIN, NON-MELANOMA \(C44\)](#)
- 4 [Supplementary material 3.  
Basic epidemiologic data on cancer PROSTATE \(C61\)](#)
- 5 [Supplementary material 4.  
Basic epidemiologic data on cancer COLON AND RECTUM \(C18-C20\)](#)
- 6 [Supplementary material 5.  
Basic epidemiologic data on cancer LUNG AND TRACHEA \(C33, C34\)](#)
- 7 [Supplementary material 6.  
Basic epidemiologic data on cancer BREAST \(C50\)](#)
- 8 [Supplementary material 7.  
Basic epidemiologic data on cancer MALIGNANT MELANOMA OF SKIN \(C43\)](#)
- 9 [Supplementary material 8.  
Basic epidemiologic data on cancer STOMACH \(C16\)](#)
- 10 [Supplementary material 9.  
Basic epidemiologic data on cancer HEAD AND NECK \(C00-C14, C30-C32\)](#)
- 11 [Supplementary material 10.  
Basic epidemiologic data on cancer KIDNEY \(C64, C65\)](#)
- 12 [Supplementary material 11.  
Basic epidemiologic data on cancer NON-HODGKIN´S LYMPHOMA \(C82-C85\)](#)
- 13 [Supplementary material 12.  
Basic epidemiologic data on cancer URINARY BLADDER \(C67\)](#)
- 14 [Supplementary material 13.  
Basic epidemiologic data on cancer PANCREAS \(C25\)](#)
- 15 [Supplementary material 14.  
Basic epidemiologic data on cancer CORPUS UTERI \(C54\)](#)
- 16 [Supplementary material 15.  
Basic epidemiologic data on cancer CERVIX UTERI \(C53\)](#)
- 17 [Supplementary material 16.  
Basic epidemiologic data on cancer TESTIS \(C62\)](#)
- 18 [Supplementary material 17.  
Table of incidence and crude incidence rate of rare, common and unclassified cancers, Slovenia 2004 –2013.](#)
- 22 [Supplementary material 18.  
Crude annual incidence rates of rare, common and unclassified cancers by age group with average annual change in last 10 years, Slovenia 2004–2013.](#)
- 23 [Supplementary material 19.  
Table of observed and estimated cancer incidence, Slovenia 2009–2013 and 2016.](#)

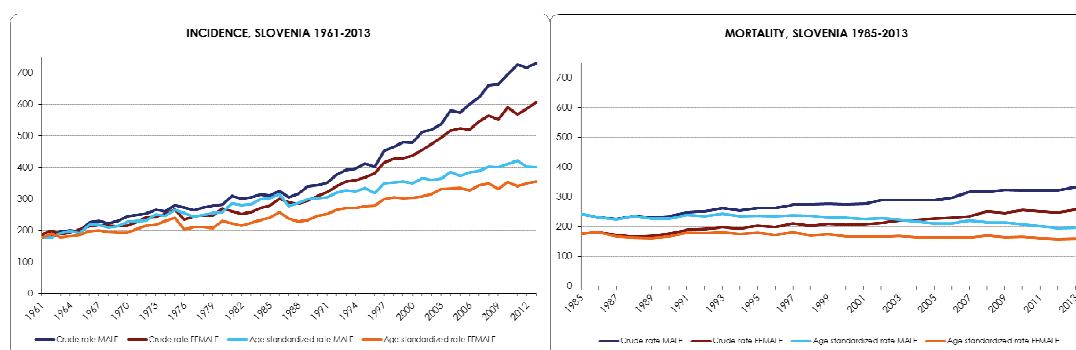
## Supplementary material 1.

## Basic epidemiologic data on cancer

## ALL CANCER SITES (C00–C96)

INCIDENCE (average 2009–2013)	Men	Women	Both sexes
Number of new cases per year	7,199	6,032	13,231
Percentage of all cancers (%)	/	/	/
Frequency rank among all cancers	/	/	/
Percentage of all cancers except non-melanoma skin (%)	/	/	/
Risk of getting cancer before age 75 (CR) (%)	37.9	27.0	32.2
Crude incidence rate per 100,000	709.3	582.4	445.1
Age-standardized incidence rate (ASR) per 100,000 (W)	400.9	284.0	225.5
Estimated annual change of crude incidence rate latest 10 years (%)	2.8	1.6	2.3
Estimated annual change of ASR latest 10 years (%)	0.8	0.6	0.7
MORTALITY (average 2009–2013)			
Number of deaths per year	3,289	2,599	5,888
Percentage of all cancer deaths (%)	/	/	/
Risk of dying from cancer before age 75 (CR) (%)	17.0	9.6	13.1
Crude mortality rate per 100,000	324.0	251.0	212.5
Age-standardized mortality rate (ASR) per 100,000 (W)	169.2	94.5	95.7
Estimated annual change of crude mortality rate latest 10 years (%)	1.5	1.7	1.6
Estimated annual change of ASR latest 10 years (%)	-1.2	-0.5	-0.8
PREVALENCE (on December 31, 2013)			
Persons living with cancer at the end of 2013 (prevalence)	41,607	52,468	94,075
Number of persons living with cancer per 100,000 at the end of 2013	4,080.5	5,047.6	4,568.7
1-year prevalence	5,888	5,213	11,101
5-year prevalence	16,047	15,103	31,150

## Crude and age-standardized rates per 100,000 population over time.



## Supplementary material 2.

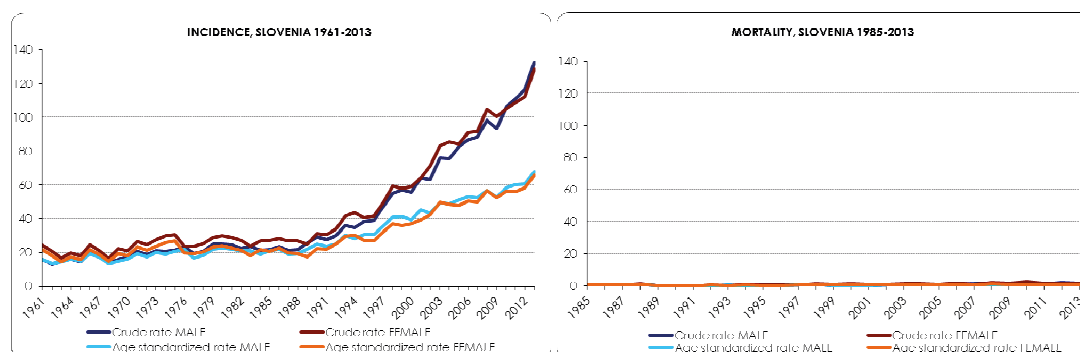
## Basic epidemiologic data on cancer

## SKIN, NON-MELANOMA (C44)

<b>INCIDENCE (average 2009–2013)</b>			
	<b>Men</b>	<b>Women</b>	<b>Both sexes</b>
Number of new cases per year	1,141	1,157	2,298
Percentage of all cancers (%)	15.9	19.2	17.4
Frequency rank among all cancers	2nd	2nd	1st
Percentage of all cancers except non-melanoma skin (%)	/	/	/
Risk of getting cancer before age 75 (CR) (%)	6.5	5.0	5.7
Crude incidence rate per 100,000	112.4	111.7	112.0
Age-standardized incidence rate (ASR) per 100,000 (W)	60.0	46.5	51.7
Estimated annual change of crude incidence rate latest 10 years (%)	5.7	4.2	4.9
Estimated annual change of ASR latest 10 years (%)	3.2	3.1	3.2
<b>MORTALITY (average 2009–2013)</b>			
Number of deaths per year	16	18	34
Percentage of all cancer deaths (%)	0.5	0.7	0.6
Risk of dying from cancer before age 75 (CR) (%)	0.05	0.02	0.03
Crude mortality rate per 100,000	1.6	1.8	1.7
Age-standardized mortality rate (ASR) per 100,000 (W)	0.7	0.4	0.5
Estimated annual change of crude mortality rate latest 10 years (%) *	/	/	/
Estimated annual change of ASR latest 10 years (%) *	/	/	/
<b>PREVALENCE (on December 31, 2013)</b>			
Persons living with cancer at the end of 2013 (prevalence)	11,169	12,532	23,701
Number of persons living with cancer per 100,000 at the end of 2013	1,095.4	1,205.6	1,151.0
1-year prevalence	1,320	1,308	2,628
5-year prevalence	3,810	3,967	7,777

\* Annual changes are not calculated because of low number of deaths.

## Crude and age-standardized rates per 100,000 population over time.



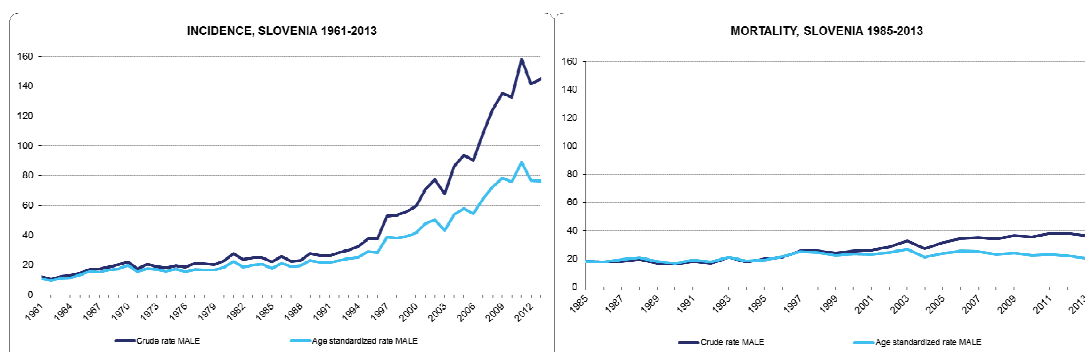
## Supplementary material 3.

## Basic epidemiologic data on cancer

## PROSTATE (C61)

<b>INCIDENCE (average 2009–2013)</b>		<b>Men</b>
Number of new cases per year		1,454
Percentage of all cancers (%)		20.2
Frequency rank among all cancers		1st
Percentage of all cancers except non-melanoma skin (%)		24.0
Risk of getting cancer before age 75 (CR) (%)		10.4
Crude incidence rate per 100,000		143.3
Age-standardized incidence rate (ASR) per 100,000 (W)		78.9
Estimated annual change of crude incidence rate latest 10 years (%)		6.2
Estimated annual change of ASR latest 10 years (%)		4.3
<b>MORTALITY (average 2009–2013)</b>		
Number of deaths per year		375
Percentage of all cancer deaths (%)		11.4
Risk of dying from cancer before age 75 (CR) (%)		1.3
Crude mortality rate per 100,000		37.0
Age-standardized mortality rate (ASR) per 100,000 (W)		16.7
Estimated annual change of crude mortality rate latest 10 years (%)		2.8
Estimated annual change of ASR latest 10 years (%)		- 1.2
<b>PREVALENCE (on December 31, 2013)</b>		
Persons living with cancer at the end of 2013 (prevalence)		10,271
Number of persons living with cancer per 100,000 at the end of 2013		1,007.3
1-year prevalence		1,401
5-year prevalence		4,687

## Crude and age-standardized rates per 100,000 men over time.



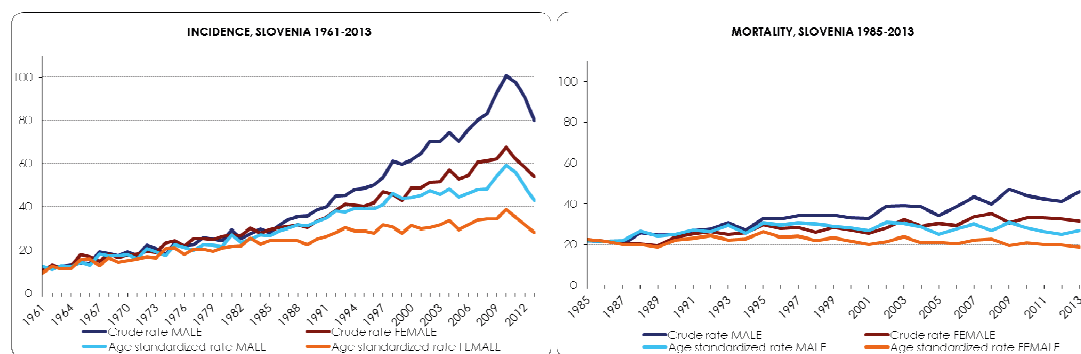
## Supplementary material 4.

## Basic epidemiologic data on cancer

## COLON AND RECTUM (C18–C20)

<b>INCIDENCE (average 2009–2013)</b>			
	<b>Men</b>	<b>Women</b>	<b>Both sexes</b>
Number of new cases per year	939	630	1,569
Percentage of all cancers (%)	13.0	10.4	11.9
Frequency rank among all cancers	3rd	3rd	2nd
Percentage of all cancers except non-melanoma skin (%)	15.5	12.9	14.4
Risk of getting cancer before age 75 (CR) (%)	6.1	3.1	4.5
Crude incidence rate per 100,000	92.4	60.8	76.4
Age-standardized incidence rate (ASR) per 100,000 (W)	51.1	26.6	37.6
Estimated annual change of crude incidence rate latest 10 years (%)	2.7	0.7	1.9
Estimated annual change of ASR latest 10 years (%)	0.7	0.1	0.6
<b>MORTALITY (average 2009–2013)</b>			
Number of deaths per year	448	333	781
Percentage of all cancer deaths (%)	13.6	12.8	13.3
Risk of dying from cancer before age 75 (CR) (%)	2.4	1.1	1.7
Crude mortality rate per 100,000	44.1	32.1	38.0
Age-standardized mortality rate (ASR) per 100,000 (W)	22.3	10.7	15.6
Estimated annual change of crude mortality rate latest 10 years (%)	2.2	1.0	1.7
Estimated annual change of ASR latest 10 years (%)	-0.8	-1.2	-0.8
<b>PREVALENCE (on December 31, 2013)</b>			
Persons living with cancer at the end of 2013 (prevalence)	5,927	4,765	10,692
Number of persons living with cancer per 100,000 at the end of 2013	581.3	458.4	519.3
1-year prevalence	679	443	1,122
5-year prevalence	2,429	1,561	3,990

## Crude and age-standardized rates per 100,000 population over time.



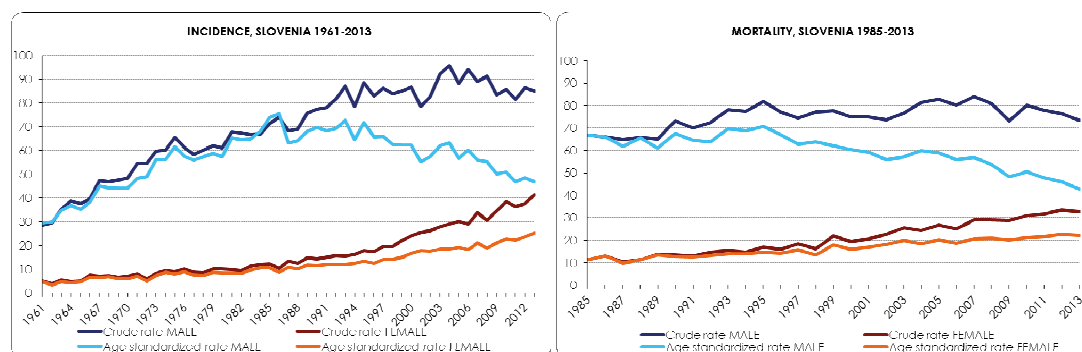
## Supplementary material 5.

## Basic epidemiologic data on cancer

## LUNG AND TRACHEA (C33, C34)

<b>INCIDENCE (average 2009–2013)</b>			
	<b>Men</b>	<b>Women</b>	<b>Both sexes</b>
Number of new cases per year	858	391	1,249
Percentage of all cancers (%)	11.9	6.5	9.4
Frequency rank among all cancers	4th	4th	4th
Percentage of all cancers except non-melanoma skin (%)	14.2	8.0	11.4
Risk of getting cancer before age 75 (CR) (%)	5.8	2.2	3.9
Crude incidence rate per 100.000	84.5	37.7	60.9
Age-standardized incidence rate (ASR) per 100.000 (W)	47.0	18.2	31.2
Estimated annual change of crude incidence rate latest 10 years (%)	- 1.4	3.9	0.2
Estimated annual change of ASR latest 10 years (%)	- 3.3	3.3	- 1.3
<b>MORTALITY (average 2009–2013)</b>			
Number of deaths per year	775	327	1,102
Percentage of all cancer deaths (%)	23.6	12.6	18.7
Risk of dying from cancer before age 75 (CR) (%)	4.9	1.6	3.2
Crude mortality rate per 100.000	76.3	31.6	53.7
Age-standardized mortality rate (ASR) per 100.000 (W)	41.2	13.8	26.0
Estimated annual change of crude mortality rate latest 10 years (%)	- 1.1	3.4	0.2
Estimated annual change of ASR latest 10 years (%)	- 3.2	2.3	- 1.6
<b>PREVALENCE (on December 31, 2013)</b>			
Persons living with cancer at the end of 2013 (prevalence)	1,794	989	2,783
Number of persons living with cancer per 100,000 at the end of 2013	175.9	95.1	135.2
1-year prevalence	497	281	778
5-year prevalence	632	390	1,022

## Crude and age-standardized rates per 100,000 population over time.



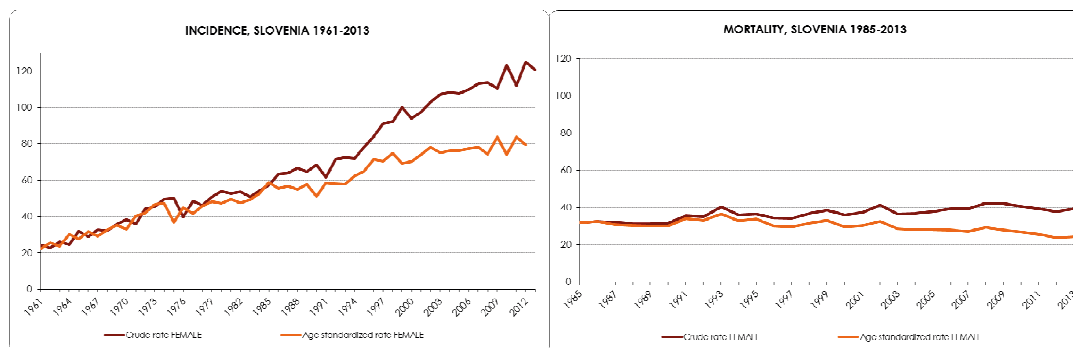
## Supplementary material 6.

## Basic epidemiologic data on cancer

## BREAST (C50)

INCIDENCE (average 2009–2013)		Women
Number of new cases per year		1,228
Percentage of all cancers (%)		20.4
Frequency rank among all cancers		1st
Percentage of all cancers except non-melanoma skin (%)		25.2
Risk of getting cancer before age 75 (CR) (%)		7.2
Crude incidence rate per 100,000		118.5
Age-standardized incidence rate (ASR) per 100,000 (W)		65.9
Estimated annual change of crude incidence rate latest 10 years (%)		1.3
Estimated annual change of ASR latest 10 years (%)		0.7
MORTALITY (average 2009–2013)		
Number of deaths per year		413
Percentage of all cancer deaths (%)		15.9
Risk of dying from cancer before age 75 (CR) (%)		1.6
Crude mortality rate per 100,000		39.9
Age-standardized mortality rate (ASR) per 100,000 (W)		15.7
Estimated annual change of crude mortality rate latest 10 years (%)		0.4
Estimated annual change of ASR latest 10 years (%)		-2.3
PREVALENCE (on December 31, 2013)		
Persons living with cancer at the end of 2013 (prevalence)		15,294
Number of persons living with cancer per 100,000 at the end of 2013		1,471.3
1-year prevalence		1,220
5-year prevalence		4,140

## Crude and age-standardized rates per 100,000 women over time.



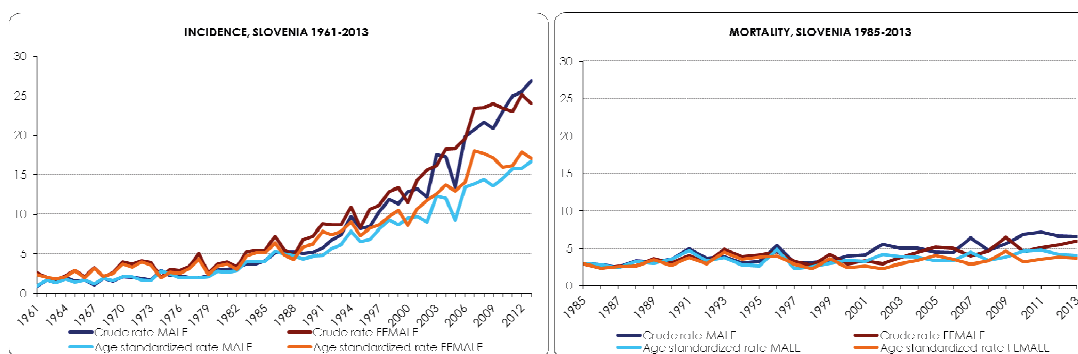
## Supplementary material 7.

## Basic epidemiologic data on cancer

## MALIGNANT MELANOMA OF SKIN (C43)

INCIDENCE (average 2009–2013)		Men	Women	Both sexes
Number of new cases per year		246	249	495
Percentage of all cancers (%)		3.4	4.1	3.7
Frequency rank among all cancers		7th	6th	6th
Percentage of all cancers except non-melanoma skin (%)		4.1	5.1	4.5
Risk of getting cancer before age 75 (CR) (%)		1.7	1.5	1.6
Crude incidence rate per 100,000		24.3	24.0	24.1
Age-standardized incidence rate (ASR) per 100,000 (W)		15.1	14.6	14.6
Estimated annual change of crude incidence rate latest 10 years (%)		6.1	3.2	4.6
Estimated annual change of ASR latest 10 years (%)		4.7	2.7	3.7
MORTALITY (average 2009–2013)				
Number of deaths per year		67	57	124
Percentage of all cancer deaths (%)		2.0	2.2	2.1
Risk of dying from cancer before age 75 (CR) (%)		0.4	0.3	0.3
Crude mortality rate per 100,000		6.6	5.5	6.1
Age-standardized mortality rate (ASR) per 100,000 (W)		3.7	2.4	3.0
Estimated annual change of crude mortality rate latest 10 years (%)		5.0	2.3	3.7
Estimated annual change of ASR latest 10 years (%)		2.4	0.8	1.4
PREVALENCE (on December 31, 2013)				
Persons living with cancer at the end of 2013 (prevalence)		2,274	2,989	5,263
Number of persons living with cancer per 100,000 at the end of 2013		223.0	287.6	255.6
1-year prevalence		267	245	512
5-year prevalence		787	854	1,641

## Crude and age-standardized rates per 100,000 population over time.





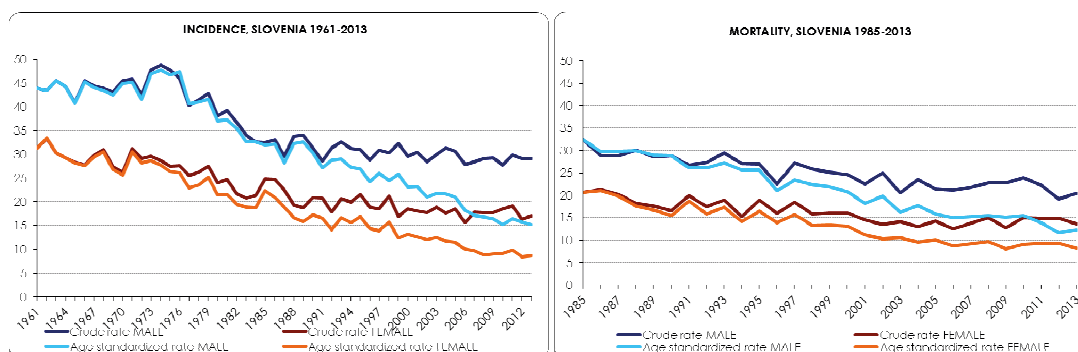
## Supplementary material 8.

## Basic epidemiologic data on cancer

## STOMACH (C16)

<b>INCIDENCE (average 2009–2013)</b>			
	<b>Men</b>	<b>Women</b>	<b>Both sexes</b>
Number of new cases per year	295	184	479
Percentage of all cancers (%)	4.1	3.1	3.6
Frequency rank among all cancers	6th	7th	7th
Percentage of all cancers except non-melanoma skin (%)	4.9	3.8	4.4
Risk of getting cancer before age 75 (CR) (%)	1.8	0.7	1.2
Crude incidence rate per 100,000	29.1	17.8	23.4
Age-standardized incidence rate (ASR) per 100,000 (W)	15.6	7.1	10.8
Estimated annual change of crude incidence rate latest 10 years (%)	-0.5	-0.1	-0.3
Estimated annual change of ASR latest 10 years (%)	-2.7	-1.2	-1.9
<b>MORTALITY (average 2009–2013)</b>			
Number of deaths per year	221	148	368
Percentage of all cancer deaths (%)	6.7	5.7	6.3
Risk of dying from cancer before age 75 (CR) (%)	1.2	0.5	0.8
Crude mortality rate per 100,000	21.7	14.2	17.9
Age-standardized mortality rate (ASR) per 100,000 (W)	11.2	5.0	7.6
Estimated annual change of crude mortality rate latest 10 years (%)	-1.0	1.0	-0.2
Estimated annual change of ASR latest 10 years (%)	-3.7	-0.8	-2.4
<b>PREVALENCE (on December 31, 2013)</b>			
Persons living with cancer at the end of 2013 (prevalence)	1,134	818	1,952
Number of persons living with cancer per 100,000 at the end of 2013	111.2	78.7	94.8
1-year prevalence	207	111	318
5-year prevalence	352	215	567

## Crude and age-standardized rates per 100,000 population over time.

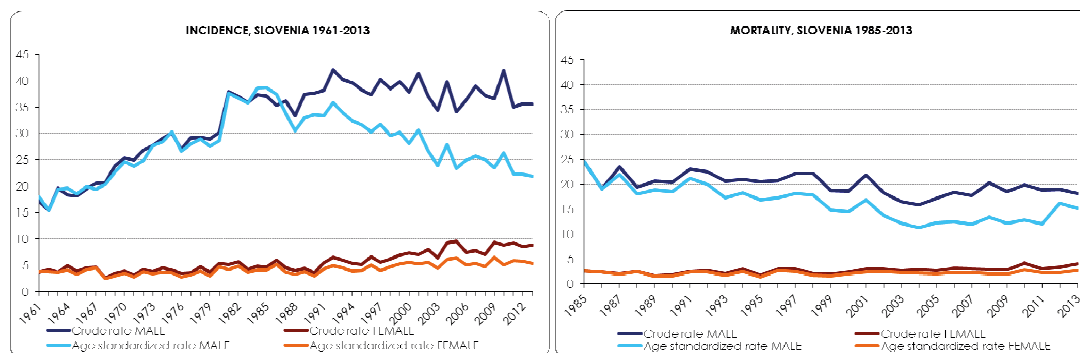


Supplementary material 9.

## Basic epidemiologic data on cancer HEAD AND NECK (C00-C14, C30-C32)

<b>INCIDENCE (average 2009–2013)</b>		<b>Men</b>	<b>Women</b>	<b>Both sexes</b>
Number of new cases per year		375	92	467
Percentage of all cancers (%)		5.2	1.5	3.5
Frequency rank among all cancers		5th	14th	8th
Percentage of all cancers except non-melanoma skin (%)		6.2	1.9	4.3
Risk of getting cancer before age 75 (CR) (%)		2.7	0.5	1.6
Crude incidence rate per 100,000		36.8	8.9	22.7
Age-standardized incidence rate (ASR) per 100,000 (W)		22.2	4.7	12.9
Estimated annual change of crude incidence rate latest 10 years (%)		-0.4	0.2	-0.3
Estimated annual change of ASR latest 10 years (%)		-2.0	-0.2	-1.5
<b>MORTALITY (average 2009–2013)</b>				
Number of deaths per year		192	37	229
Percentage of all cancer deaths (%)		5.8	1.4	3.9
Risk of dying from cancer before age 75 (CR) (%)		1.3	0.2	0.7
Crude mortality rate per 100,000		19.0	3.4	11.1
Age-standardized mortality rate (ASR) per 100,000 (W)		10.8	1.6	6.0
Estimated annual change of crude mortality rate latest 10 years (%)		1.6	3.4	1.7
Estimated annual change of ASR latest 10 years (%)		-0.4	2.5	0.4
<b>PREVALENCE (on December 31, 2013)</b>				
Persons living with cancer at the end of 2013 (prevalence)		2,471	811	3,282
Number of persons living with cancer per 100,000 at the end of 2013		242.3	78.0	159.4
1-year prevalence		308	78	386
5-year prevalence		798	228	1,026

Crude and age-standardized rates per 100,000 population over time.



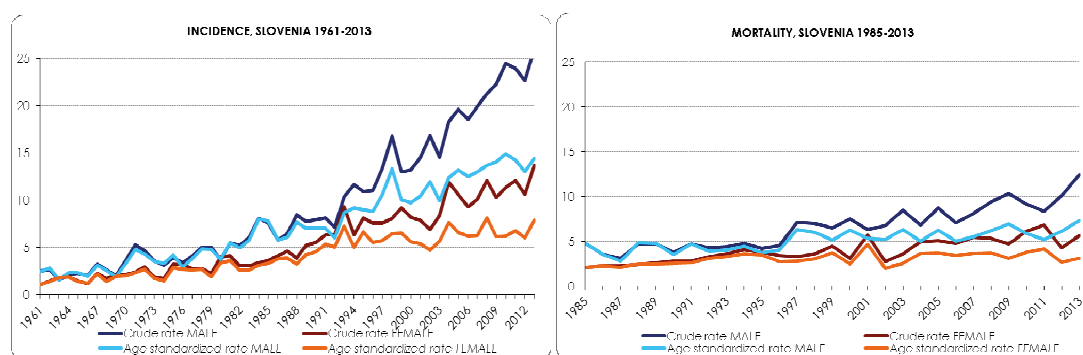
## Supplementary material 10.

## Basic epidemiologic data on cancer

## KIDNEY (C64, C65)

INCIDENCE (average 2009–2013)	Men	Women	Both sexes
Number of new cases per year	243	120	363
Percentage of all cancers (%)	3.4	2.0	2.7
Frequency rank among all cancers	8th	12th	9th
Percentage of all cancers except non-melanoma skin (%)	4.0	2.5	3.3
Risk of getting cancer before age 75 (CR) (%)	1.7	0.6	1.1
Crude incidence rate per 100,000	23.9	11.6	17.7
Age-standardized incidence rate (ASR) per 100,000 (W)	13.9	5.3	9.3
Estimated annual change of crude incidence rate latest 10 years (%)	3.5	1.3	2.8
Estimated annual change of ASR latest 10 years (%)	1.3	-0.9	0.6
MORTALITY (average 2009–2013)			
Number of deaths per year	103	58	160
Percentage of all cancer deaths (%)	3.1	2.2	2.7
Risk of dying from cancer before age 75 (CR) (%)	0.6	0.2	0.4
Crude mortality rate per 100,000	10.1	5.6	7.8
Age-standardized mortality rate (ASR) per 100,000 (W)	5.4	1.8	3.4
Estimated annual change of crude mortality rate latest 10 years (%)	4.7	1.2	3.6
Estimated annual change of ASR latest 10 years (%)	1.9	-2.7	0.9
PREVALENCE (on December 31, 2013)			
Persons living with cancer at the end of 2013 (prevalence)	1,723	1,023	2,746
Number of persons living with cancer per 100,000 at the end of 2013	169.0	98.4	133.4
1-year prevalence	201	116	317
5-year prevalence	592	266	858

## Crude and age-standardized rates per 100,000 population over time.



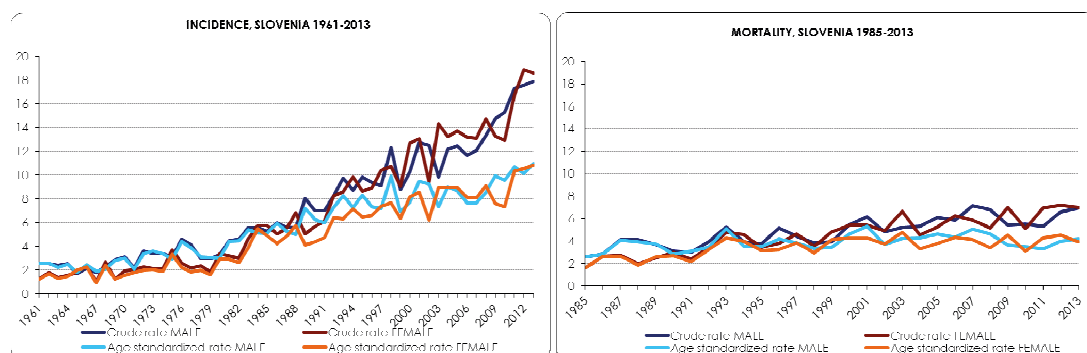
## Supplementary material 11.

## Basic epidemiologic data on cancer

## NON-HODGKIN'S LYMPHOMA (C82–C85)

INCIDENCE (average 2009–2013)	Men	Women	Both sexes
Number of new cases per year	169	167	336
Percentage of all cancers (%)	2.3	2.8	2.5
Frequency rank among all cancers	11th	9th	11th
Percentage of all cancers except non-melanoma skin (%)	2.8	3.4	3.1
Risk of getting cancer before age 75 (CR) (%)	1.1	0.8	0.9
Crude incidence rate per 100,000	16.6	16.2	16.4
Age-standardized incidence rate (ASR) per 100,000 (W)	10.0	7.5	8.6
Estimated annual change of crude incidence rate latest 10 years (%)	5.3	3.9	4.6
Estimated annual change of ASR latest 10 years (%)	3.0	2.0	2.5
MORTALITY (average 2009–2013)			
Number of deaths per year	61	69	130
Percentage of all cancer deaths (%)	1.8	2.7	2.2
Risk of dying from cancer before age 75 (CR) (%)	0.3	0.2	0.3
Crude mortality rate per 100,000	6.0	6.7	6.3
Age-standardized mortality rate (ASR) per 100,000 (W)	3.1	2.2	2.6
Estimated annual change of crude mortality rate latest 10 years (%)	0.9	4.0	2.4
Estimated annual change of ASR latest 10 years (%)	-2.6	0.2	-0.6
PREVALENCE (on December 31, 2013)			
Persons living with cancer at the end of 2013 (prevalence)	1,296	1,353	2,649
Number of persons living with cancer per 100,000 at the end of 2013	127.1	130.2	128.6
1-year prevalence	156	164	320
5-year prevalence	435	415	850

## Crude and age-standardized rates per 100,000 population over time.



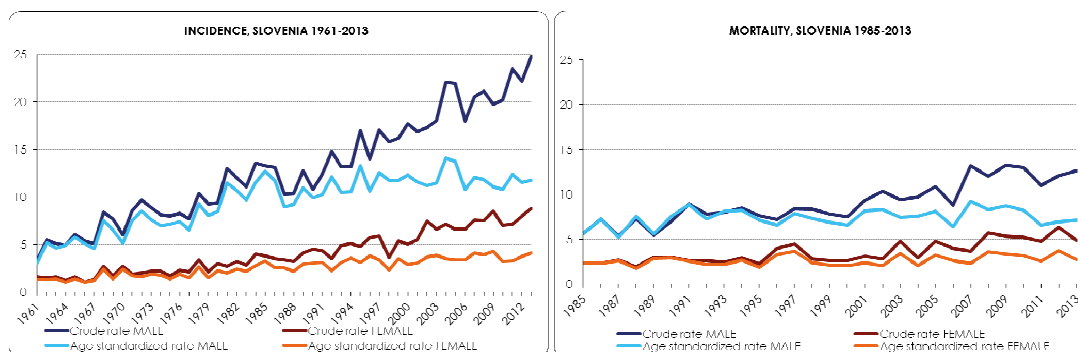
## Supplementary material 12.

## Basic epidemiologic data on cancer

## URINARY BLADDER (C67)

<b>INCIDENCE (average 2009–2013)</b>		<b>Men</b>	<b>Women</b>	<b>Both sexes</b>
Number of new cases per year		225	82	307
Percentage of all cancers (%)		3.1	1.4	2.3
Frequency rank among all cancers		9th	15th	13th
Percentage of all cancers except non-melanoma skin (%)		3.7	1.7	2.8
Risk of getting cancer before age 75 (CR) (%)		1.3	0.3	0.8
Crude incidence rate per 100,000		22.2	7.9	15.0
Age-standardized incidence rate (ASR) per 100,000 (W)		11.4	2.9	6.5
Estimated annual change of crude incidence rate latest 10 years (%)		1.4	2.2	1.6
Estimated annual change of ASR latest 10 years (%)		- 1.5	0.9	- 0.8
<b>MORTALITY (average 2009–2013)</b>				
Number of deaths per year		126	55	181
Percentage of all cancer deaths (%)		3.8	2.1	3.1
Risk of dying from cancer before age 75 (CR) (%)		0.5	0.2	0.3
Crude mortality rate per 100,000		12.4	5.3	8.8
Age-standardized mortality rate (ASR) per 100,000 (W)		5.9	1.6	3.3
Estimated annual change of crude mortality rate latest 10 years (%)		2.7	5.3	3.3
Estimated annual change of ASR latest 10 years (%)		- 0.9	3.1	0.4
<b>PREVALENCE (on December 31, 2013)</b>				
Persons living with cancer at the end of 2013 (prevalence)		1,363	449	1,812
Number of persons living with cancer per 100,000 at the end of 2013		133.7	43.2	88.0
1-year prevalence		199	73	272
5-year prevalence		493	135	628

## Crude and age-standardized rates per 100,000 population over time.



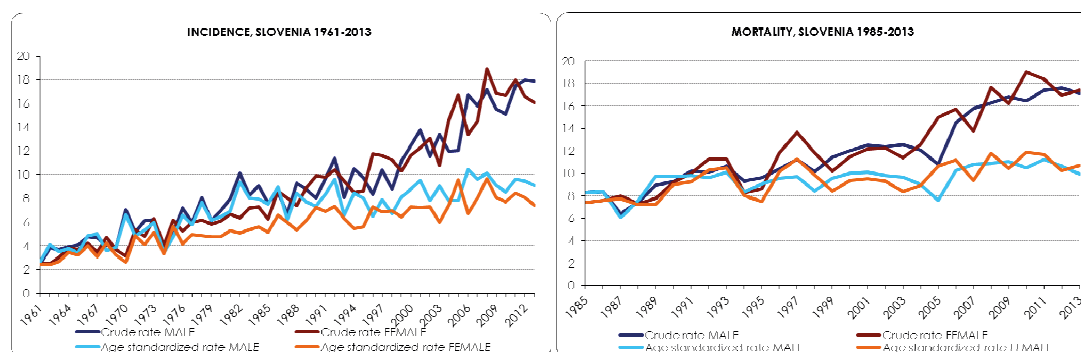
## Supplementary material 13.

## Basic epidemiologic data on cancer

## PANCREAS (C25)

<b>INCIDENCE (average 2009–2013)</b>		<b>Men</b>	<b>Women</b>	<b>Both sexes</b>
Number of new cases per year		171	175	346
Percentage of all cancers (%)		2.4	2.9	2.6
Frequency rank among all cancers		10th	8th	10th
Percentage of all cancers except non-melanoma skin (%)		2.8	3.6	3.2
Risk of getting cancer before age 75 (CR) (%)		1.1	0.7	0.9
Crude incidence rate per 100,000		16.9	16.9	16.9
Age-standardized incidence rate (ASR) per 100,000 (W)		9.1	6.1	7.5
Estimated annual change of crude incidence rate latest 10 years (%)		4.0	1.6	2.7
Estimated annual change of ASR latest 10 years (%)		1.1	-0.5	0.1
<b>MORTALITY (average 2009–2013)</b>				
Number of deaths per year		174	182	356
Percentage of all cancer deaths (%)		5.3	7.0	6.0
Risk of dying from cancer before age 75 (CR) (%)		1.1	0.7	0.9
Crude mortality rate per 100,000		17.1	17.6	17.3
Age-standardized mortality rate (ASR) per 100,000 (W)		9.1	6.1	7.5
Estimated annual change of crude mortality rate latest 10 years (%)		4.8	3.3	4.0
Estimated annual change of ASR latest 10 years (%)		1.7	1.4	1.2
<b>PREVALENCE (on December 31, 2013)</b>				
Persons living with cancer at the end of 2013 (prevalence)		159	154	313
Number of persons living with cancer per 100,000 at the end of 2013		15.6	14.8	15.2
1-year prevalence		76	70	146
5-year prevalence		50	46	96

## Crude and age-standardized rates per 100,000 population over time.



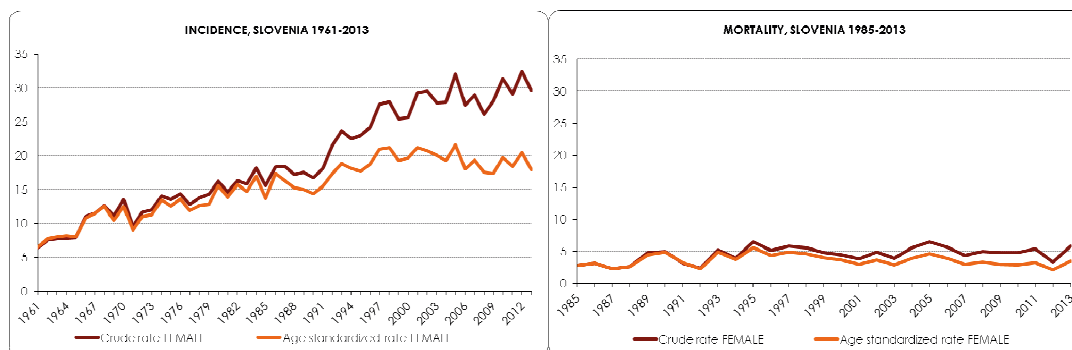
## Supplementary material 14.

## Basic epidemiologic data on cancer

### CORPUS UTERI (C54)

INCIDENCE (average 2009–2013)		Women
Number of new cases per year		313
Percentage of all cancers (%)		5.2
Frequency rank among all cancers		5th
Percentage of all cancers except non-melanoma skin (%)		6.4
Risk of getting cancer before age 75 (CR) (%)		1.9
Crude incidence rate per 100,000		30.2
Age-standardized incidence rate (ASR) per 100,000 (W)		15.0
Estimated annual change of crude incidence rate latest 10 years (%)		0.7
Estimated annual change of ASR latest 10 years (%)		-0.6
MORTALITY (average 2009–2013)		
Number of deaths per year		49
Percentage of all cancer deaths (%)		1.9
Risk of dying from cancer before age 75 (CR) (%)		0.2
Crude mortality rate per 100,000		4.7
Age-standardized mortality rate (ASR) per 100,000 (W)		1.5
Estimated annual change of crude mortality rate latest 10 years (%)		-2.6
Estimated annual change of ASR latest 10 years (%)		-7.4
PREVALENCE (on December 31, 2013)		
Persons living with cancer at the end of 2013 (prevalence)		4,345
Number of persons living with cancer per 100,000 at the end of 2013		418.0
1-year prevalence		295
5-year prevalence		991

#### Crude and age-standardized rates per 100,000 women over time.



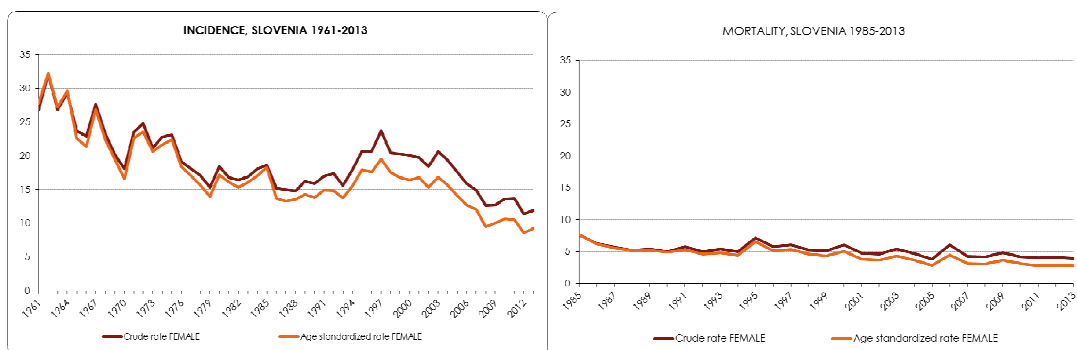
## Supplementary material 15.

## Basic epidemiologic data on cancer

### CERVIX UTERI (C53)

INCIDENCE (average 2009–2013)		Women
Number of new cases per year		131
Percentage of all cancers (%)		2.2
Frequency rank among all cancers		11th
Percentage of all cancers except non-melanoma skin (%)		2.7
Risk of getting cancer before age 75 (CR) (%)		0.9
Crude incidence rate per 100,000		12.7
Age-standardized incidence rate (ASR) per 100,000 (W)		8.6
Estimated annual change of crude incidence rate latest 10 years (%)		- 5.0
Estimated annual change of ASR latest 10 years (%)		- 5.8
MORTALITY (average 2009–2013)		
Number of deaths per year		44
Percentage of all cancer deaths (%)		1.7
Risk of dying from cancer before age 75 (CR) (%)		0.2
Crude mortality rate per 100,000		4.2
Age-standardized mortality rate (ASR) per 100,000 (W)		2.2
Estimated annual change of crude mortality rate latest 10 years (%)		- 1.9
Estimated annual change of ASR latest 10 years (%)		- 2.5
PREVALENCE (on December 31, 2013)		
Persons living with cancer at the end of 2013 (prevalence)		3,546
Number of persons living with cancer per 100,000 at the end of 2013		341.1
1-year prevalence		113
5-year prevalence		385

#### Crude and age-standardized rates per 100,000 women over time.





## Supplementary material 16.

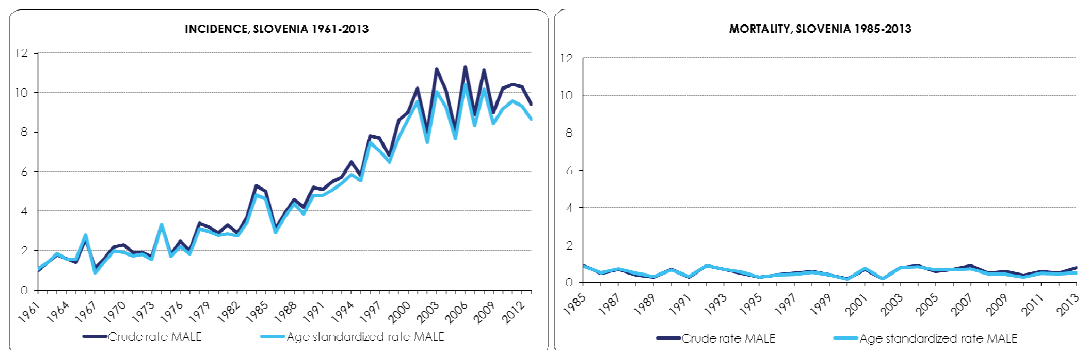
## Basic epidemiologic data on cancer

## TESTIS (C62)

INCIDENCE (average 2009–2013)		Men
Number of new cases per year		101
Percentage of all cancers (%)		1.4
Frequency rank among all cancers		13th
Percentage of all cancers except non-melanoma skin (%)		1.7
Risk of getting cancer before age 75 (CR) (%)		0.7
Crude incidence rate per 100,000		9.9
Age-standardized incidence rate (ASR) per 100,000 (W)		8.6
Estimated annual change of crude incidence rate latest 10 years (%)		0.5
Estimated annual change of ASR latest 10 years (%)		0.7
MORTALITY (average 2009–2013)		
Number of deaths per year		6
Percentage of all cancer deaths (%)		0.2
Risk of dying from cancer before age 75 (CR) (%)		0.03
Crude mortality rate per 100,000		0.6
Age-standardized mortality rate (ASR) per 100,000 (W)		0.4
Estimated annual change of crude mortality rate latest 10 years (%) *		/
Estimated annual change of ASR latest 10 years (%) *		/
PREVALENCE (on December 31, 2013)		
Persons living with cancer at the end of 2013 (prevalence)		2,121
Number of persons living with cancer per 100,000 at the end of 2013		208.0
1-year prevalence		96
5-year prevalence		395

\* Annual change is not calculated because of low number of deaths.

## Crude and age-standardized rates per 100,000 men over time.



## Supplementary material 17.

**Table of incidence and crude incidence rate of rare, common and unclassified cancers, Slovenia 2004–2013.**

Primary site	Number	Incidence rate per 100,000
Rare cancers	28.768	141,66
Head and neck rare cancers	4.505	22,18
Epithelial tumours of nasal cavity and sinuses	114	0,56
Epithelial tumours of nasopharynx	98	0,48
Epithelial tumours of major salivary glands and salivary-gland type tumours	276	1,36
Epithelial tumours of hypopharynx and larynx	1.561	7,69
Epithelial tumours of oropharynx	1.301	6,41
Epithelial tumours of oral cavity and lip	1.133	5,58
Epithelial tumours of eye and adnexa	18	0,09
Epithelial tumours of middle ear	4	0,02
Digestive rare cancers	4.021	19,80
Epithelial tumours of oesophagus	754	3,71
Epithelial tumours of stomach	363	1,79
Epithelial tumours of small intestine	103	0,51
Epithelial tumours of colon	26	0,13
Epithelial tumours of rectum	4	0,02
Epithelial tumours of anal canal	153	0,75
Epithelial tumours of pancreas	23	0,11
Epithelial tumours of liver and intrahepatic bile tract (ibt)	972	4,79
Epithelial tumours of gallbladder and extrahepatic biliary tract (ebt)	1.623	7,99
Thoracic rare cancers and mesothelioma	1.565	7,71
Epithelial tumour of trachea	48	0,24
Epithelial tumour of lung	1.140	5,61
Epithelial tumours of thymus	35	0,17
Malignant mesothelioma	342	1,68

Continued →

Figure : Continued.

Primary site	Number	Incidence rate per 100,000
Breast rare cancers	701	3,45
Epithelial tumours of breast, females	601	2,96
Epithelial tumours of breast, males	100	0,49
Female genital rare cancers	3.817	18,80
Epithelial tumours of corpus uteri	161	0,79
Epithelial tumours of cervix uteri	1.404	6,91
Epithelial tumours of ovary and fallopian tube	1.693	8,34
Non epithelial tumours of ovary	40	0,20
Epithelial tumours of vulva and vagina	517	2,55
Trophoblastic tumour of placenta	2	0,01
Male genital rare cancers	1.152	5,67
Epithelial tumours of prostate	47	0,23
Testicular and paratesticular cancers	993	4,89
Epithelial tumours of penis	112	0,55
Urogenital rare cancers	517	2,55
Epithelial tumours of kidney	1	0,00
Epithelial tumours of pelvis and ureter	418	2,06
Epithelial tumours of urethra	20	0,10
Epithelial tumours of bladder	78	0,38
Rare skin tumors and non-cutaneous melanoma	328	1,62
Adnexal carcinoma of skin	102	0,50
Malignant melanoma of mucosa and extracutaneous	71	0,35
Malignant melanoma of uvea	155	0,76
Rare embrionale tumours	110	0,53
Neuroblastoma and ganglioneuroblastoma	15	0,07
Nephroblastoma	24	0,12

Continued →

Figure : Continued.

Primary site	Number	Incidence rate per 100,000
Retinoblastoma	15	0,07
Hepatoblastoma	4	0,02
Pleuropulmonary blastoma	0	0,00
Pancreatoblastoma	0	0,00
Olfactory neuroblastoma	8	0,04
Odontogenic malignant tumours	0	0,00
Extragenital germ cell tumours	44	0,22
Rare sarcomas	1.340	6,60
Soft tissue sarcoma	881	4,34
Bone sarcoma	165	0,81
Gastrointestinal stromal sarcoma	278	1,37
Kaposi's sarcoma	16	0,08
Neuroendocrine rare tumours	961	4,70
Neuroendocrine tumours	961	4,73
Endocrine organs rare tumours	1.493	7,35
Carcinomas of pituitary gland	2	0,01
Carcinomas of thyroid gland	1.441	7,10
Carcinomas of parathyroid gland	4	0,02
Carcinoma of adrenal cortex	46	0,23
Central nervous system rare tumours	1.221	6,01
Tumours of central nervous system (cns)	1.179	5,81
Embryonal tumors of cns	42	0,21
Haematological rare malignancies	6.680	32,89
Lymphoid diseases	4.224	20,80
Acute myeloid leukemia and related precursor neoplasms	844	4,16
Myeloproliferative neoplasms	855	4,21

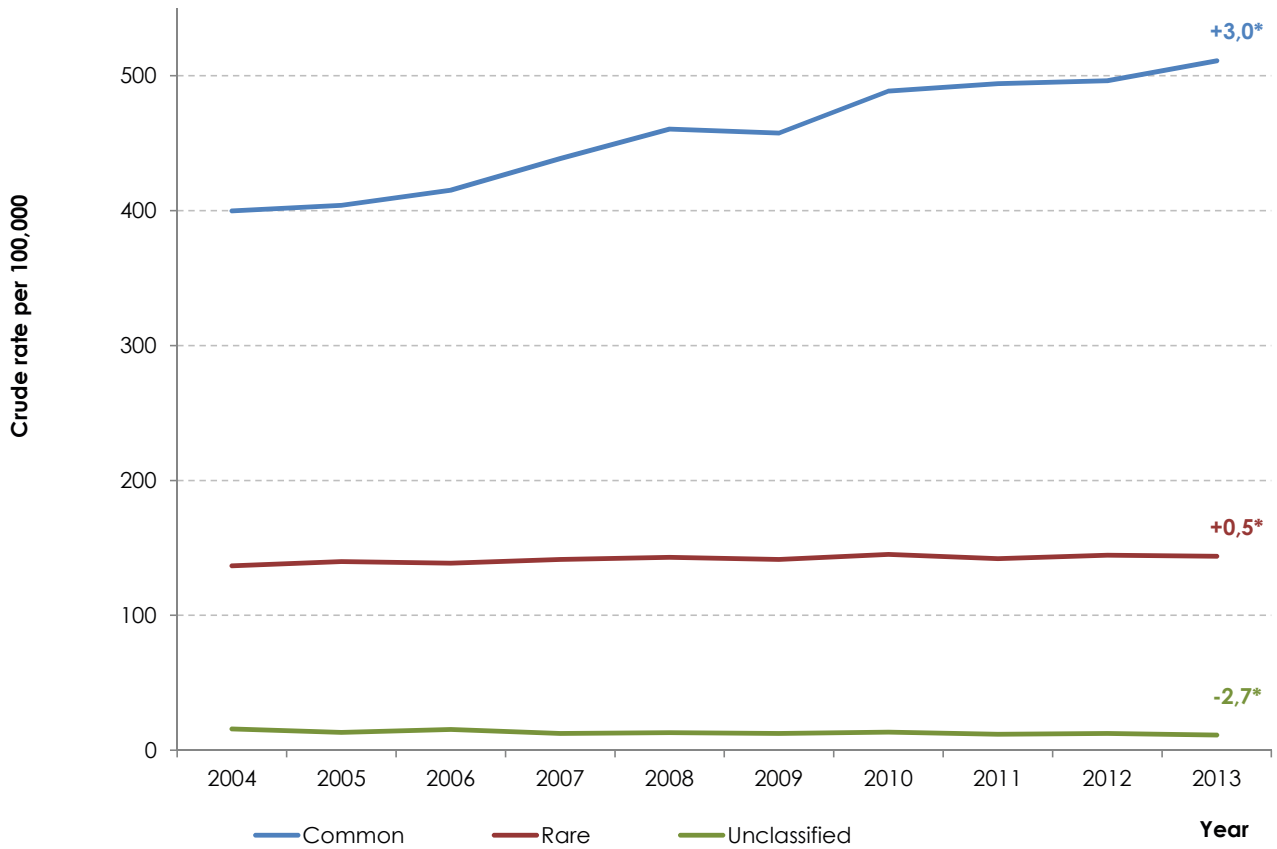
Continued →

Figure : Continued.

Primary site	Number	Incidence rate per 100,000
Myelodysplastic syndrome and myelodysplastic/myeloproliferative diseases	748	3,68
Histiocytic and dendritic cell neoplasms	9	0,04
Other rare cancers	357	1,76
Other rare cancers, unclassified	357	1,76
Common cancers	92.799	456,95
Unclassified sites	2.665	13,12
Other poorly defined hematological diseases	61	0,30
Other poorly defined sites / unknown primary sites	2.031	10,00
DCO cases (registered from death certificates only)	573	2,82

## Supplementary material 18.

Crude annual incidence rates of rare, common and unclassified cancers by age group with average annual change in last 10 years, Slovenia 2004–2013.



\* Average annual change is statistically significant at 0.05 significance level

## Supplementary material 19.

Table of observed and estimated cancer incidence, Slovenia 2009–2013 and 2016.

ICD code	Primary site	Sex	Average annual observed values 2009–2013		Estimation for 2016			
			Number	Incidence rate per 100,000	Number (95% prediction interval)		Incidence rate per 100,000 (95% prediction interval)	
C00–C96	All sites	M+F	13237	645,0	14785	14365–15205	716	696–737
		M	7205	709,2	8259	7983–8535	807	780–834
		F	6032	582,1	6527	6210–6843	627	597–657
C00–C14	Mouth and pharynx	M	273	26,9	272	229–314	27	22–31
		F	72	7,0	71	48–94	7	5–9
C15	Oesophagus	M	69	6,8	64	43–85	6	4–8
		F	16	1,5	16	4–27	1	0–3
C16	Stomach	M	295	29,1	285	241–329	28	24–32
		F	184	17,8	180	145–215	17	14–21
C18	Colon	M	524	51,6	586	513–658	57	50–64
		F	395	38,1	414	359–469	40	35–45
C19–C20	Rectum and rectosigmoid junction	M	416	40,9	440	383–497	43	37–49
		F	235	22,7	215	174–256	21	17–25
C22	Liver and intrahepatic bile ducts	M	128	12,6	160	127–193	16	12–19
		F	46	4,5	48	28–68	5	3–7
C23–C24	Gallbladder and biliary tract	M	69	6,8	80	55–104	8	5–10
		F	103	10,0	110	82–138	11	8–13
C25	Pancreas	M	171	16,9	221	181–260	22	18–25
		F	175	16,9	186	149–223	18	14–21
C32	Larynx	M	92	9,0	84	60–107	8	6–11
		F	13	1,3	14	0–40	1	0–4
C33–C34	Trachea, bronchus and lung	M	858	84,5	806	733–879	79	72–86
		F	391	37,7	458	403–513	44	39–49
C43	Malignant melanoma of skin	M	246	24,3	325	217–433	32	21–42
		F	249	24,0	286	238–333	27	23–32
C44	Skin, other malignomas	M	1141	112,3	1476	1376–1576	144	134–154
		F	1157	111,6	1378	1273–1484	132	122–143
C48–C49	Connective and soft tissue	M	29	2,8	28	14–43	3	1–4
		F	38	3,6	43	29–57	4	3–5
C50	Breast	M	13	1,3	20	7–33	2	1–3
		F	1227	118,5	1307	1204–1409	126	116–135
C53	Cervix uteri	M	–	–	–	–	–	–
		F	131	12,7	102	77–126	10	7–12
C54	Corpus uteri	M	–	–	–	–	–	–
		F	313	30,2	320	267–372	31	26–36
C56	Ovary	M	–	–	–	–	–	–
		F	161	15,6	152	48–255	15	5–25
C61	Prostate	M	1458	143,5	1853	1741–1966	181	170–192
		F	–	–	–	–	–	–
C62	Testis	M	101	9,9	102	75–128	10	7–13
		F	–	–	–	–	–	–
C64–C65	Kidney with renal pelvis	M	243	24,0	282	238–326	28	23–32
		F	120	11,6	137	49–225	13	5–22
C67	Bladder	M	225	22,2	247	204–290	24	20–28
		F	82	7,9	93	62–123	9	6–12
C70–C72	Central and autonomic nervous system	M	81	8,0	81	57–106	8	6–10
		F	68	6,5	71	53–89	7	5–9
C73	Thyroid gland	M	40	4,0	52	31–72	5	3–7
		F	112	10,8	116	94–138	11	9–13
C81	Hodgkin's disease	M	24	2,4	18	6–30	2	1–3
		F	25	2,5	22	11–33	2	1–3
C82–C85	Non-Hodgkin's lymphoma	M	169	16,6	208	107–309	20	10–30
		F	167	16,2	202	94–309	19	9–30
C90	Multiple myeloma and malignant plasma cell neoplasms	M	65	6,4	77	53–100	7	5–10
		F	65	6,3	74	46–103	7	4–10
C91–C95	Leukaemias	M	153	15,0	170	143–197	17	14–19
		F	112	10,8	123	91–155	12	9–15