

# Regulation of atypical MAP kinases ERK3 and ERK4 by the phosphatase DUSP2

<sup>2</sup>Maria Perander, <sup>1</sup>Rania Al-Mahdi, <sup>1</sup>Thomas C. Jensen <sup>1</sup>Jennifer A.L. Nunn, <sup>1</sup>Hanne Kildalsen, <sup>1</sup>Bjarne Johansen, <sup>3,4</sup>Mads Gabrielsen, <sup>3\*</sup>Stephen M. Keyse and <sup>1\*</sup>Ole-Morten Seternes.

<sup>1</sup>Department of Pharmacy, <sup>2</sup>Department of Medical Biology, UiT The Arctic University of Norway, N-9037 Tromsø, Norway. and <sup>3</sup>Cancer Research UK Stress Response Laboratory, Medical Research Institute, Division of Cancer Research, Jacqui Wood Cancer Centre, James Arrot Drive, Ninewells Hospital and Medical School, Dundee DD1 9SY, United Kingdom, <sup>4</sup>present address; Beatson Institute for Cancer Research, Garscube Estate, Switchback Road Glasgow G61 1BD, United Kingdom.

\* To whom correspondence should be addressed: [Ole-Morten-Seternes@uit.no](mailto:Ole-Morten-Seternes@uit.no) or [s.m.keyse@dundee.ac.uk](mailto:s.m.keyse@dundee.ac.uk)

## Supplementary Figure Legends

Supplementary Figure 1: Unprocessed Western blot scans.

Figure 2A and B

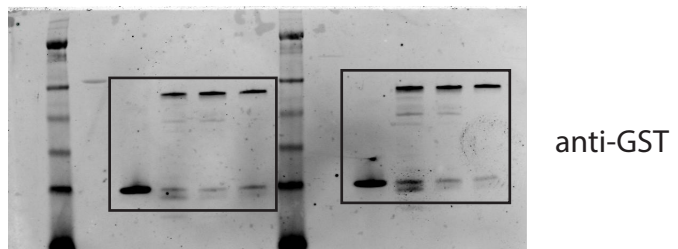
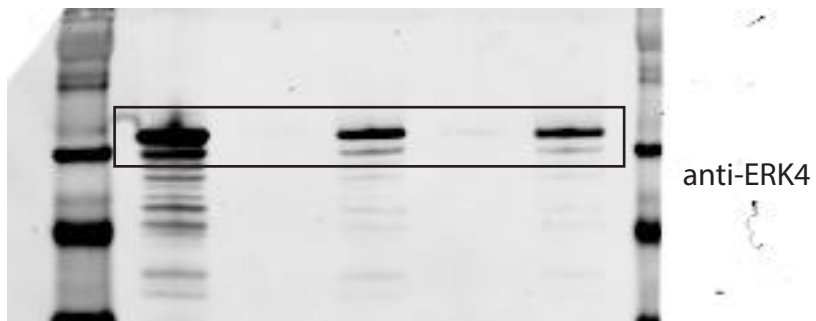
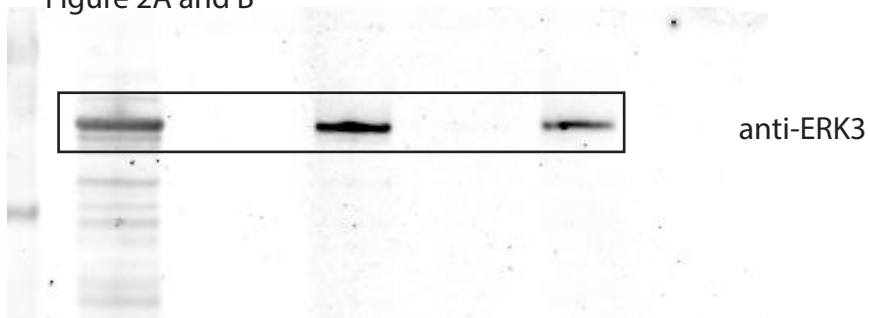


Figure 2C

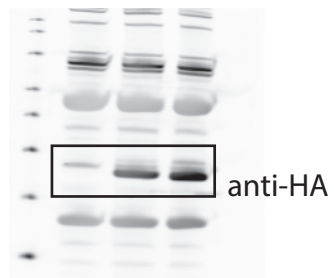
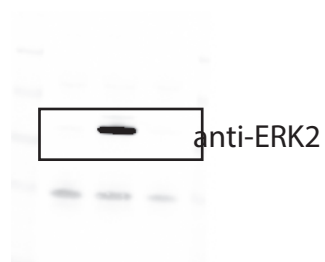


Figure 2D

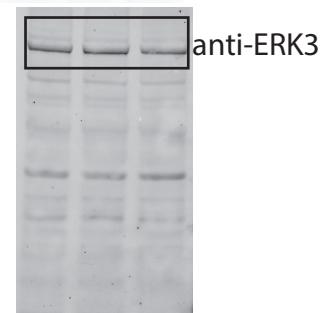
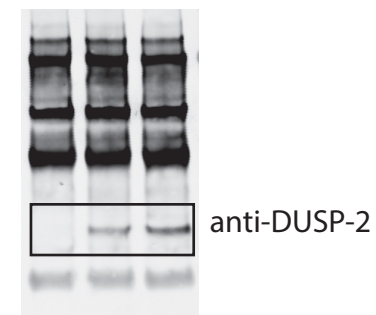
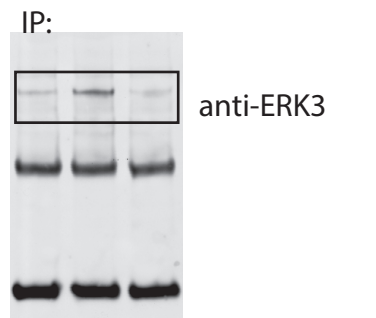


Figure 2E

IP:

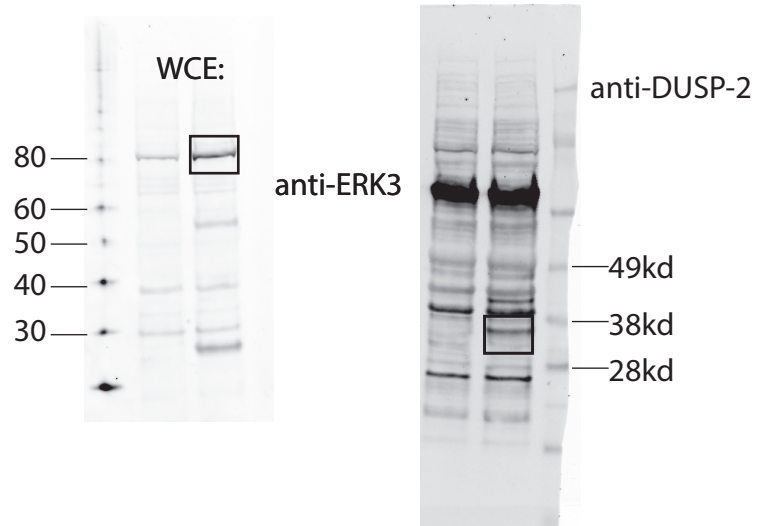
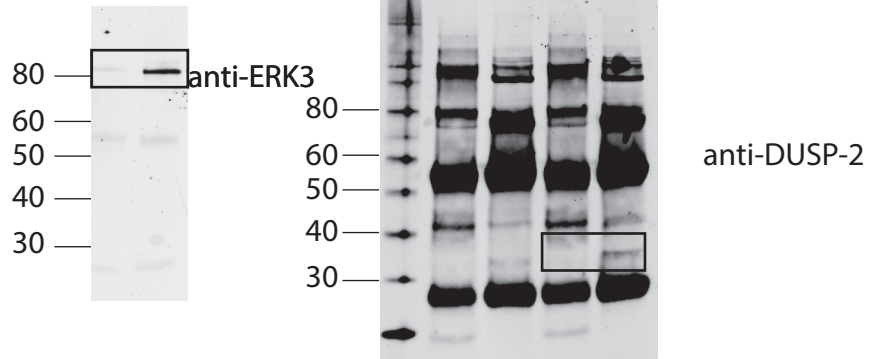


Figure 4 A

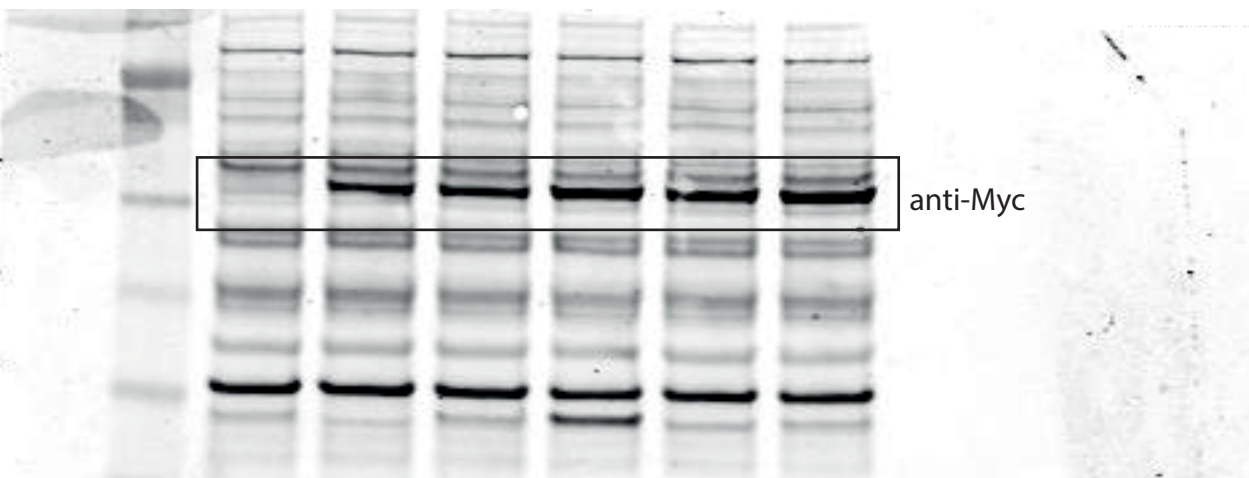
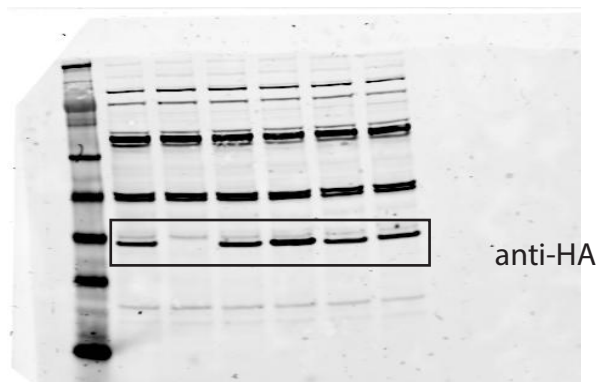
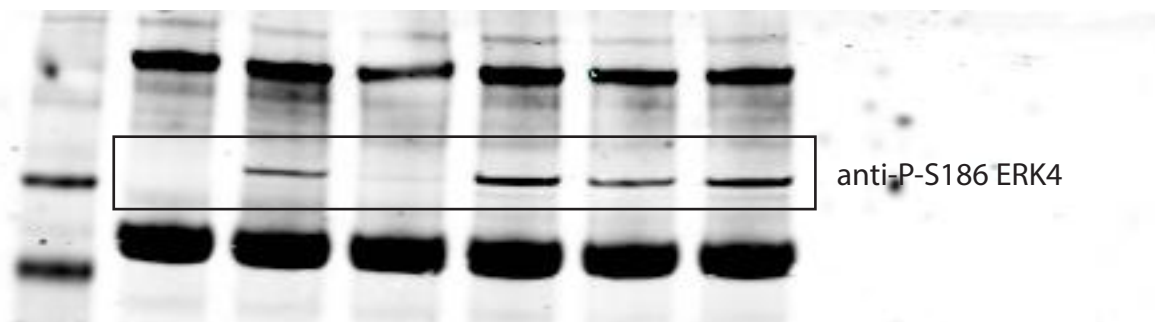


Figure 4 B

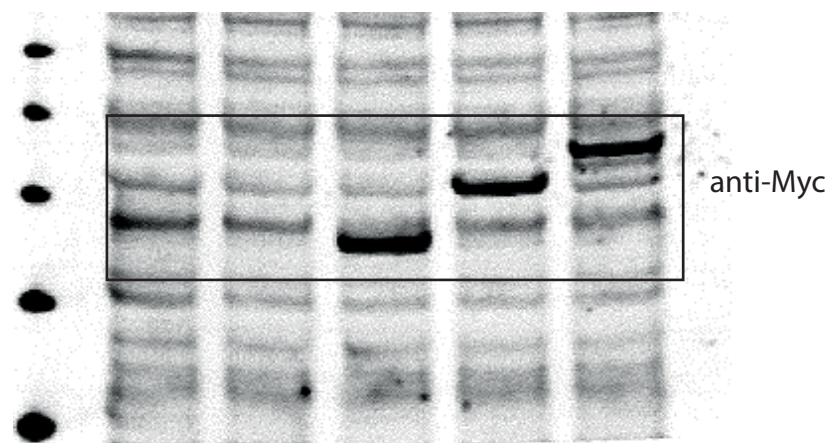
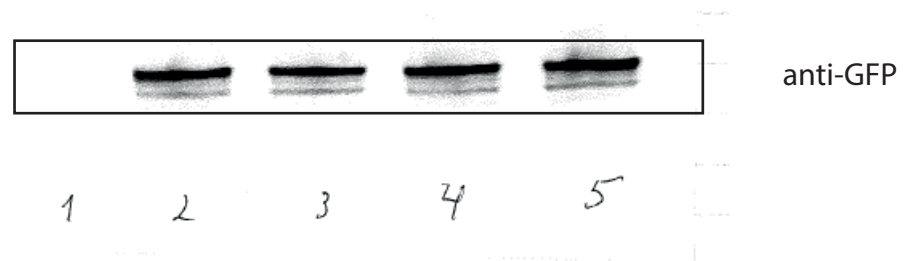
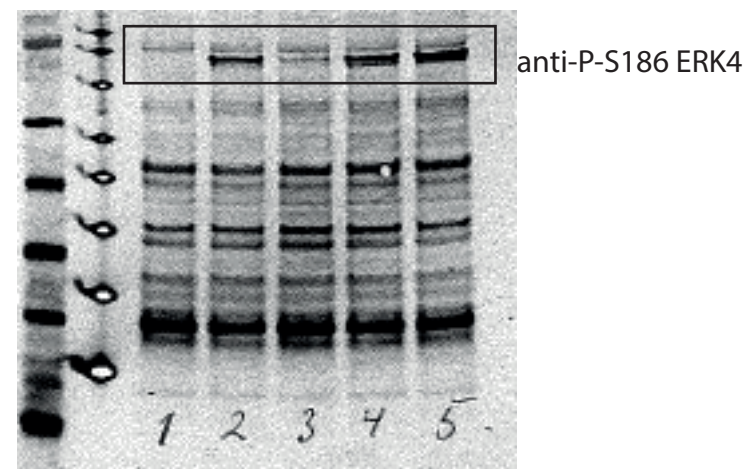


FIGURE 4C

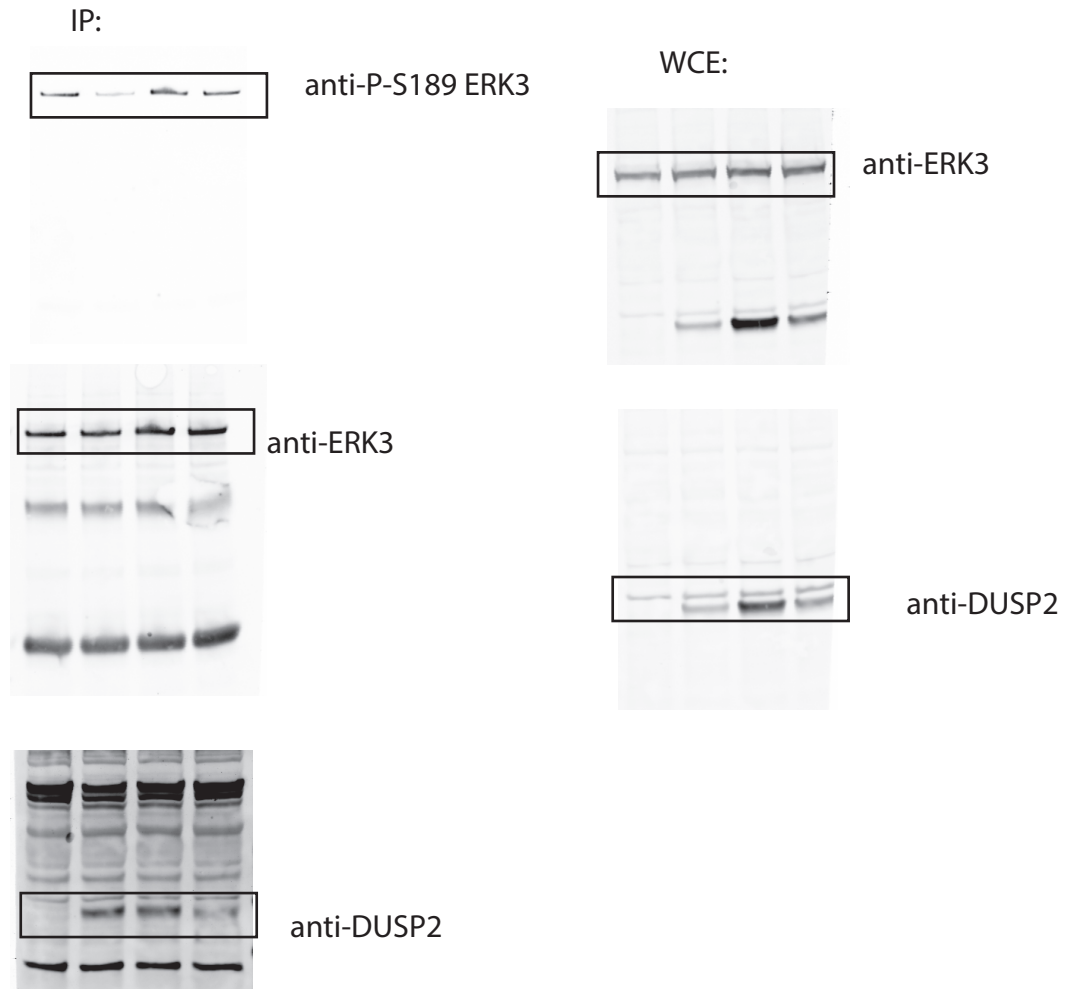


FIGURE 5

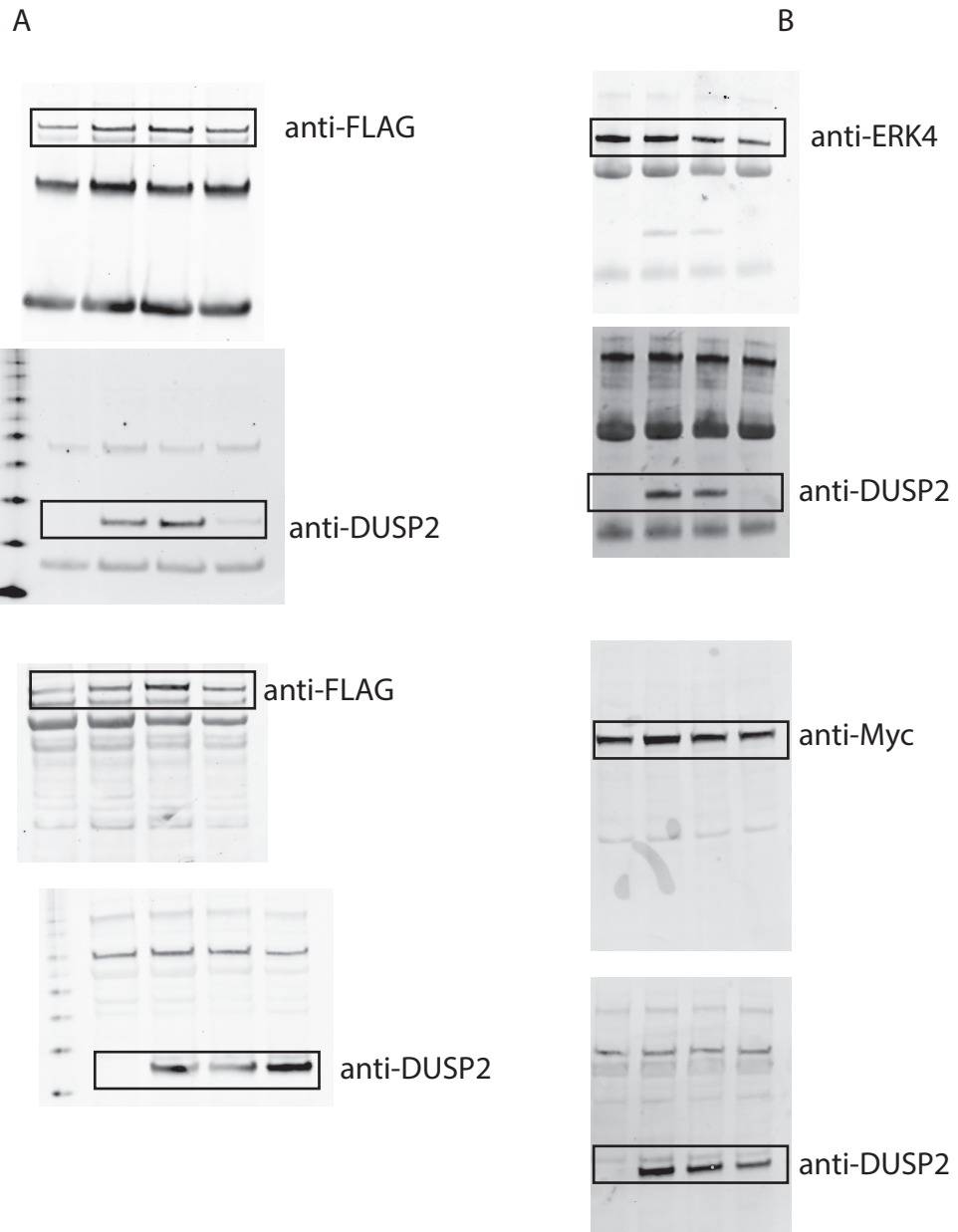


Figure 7A

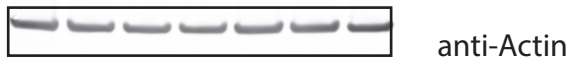
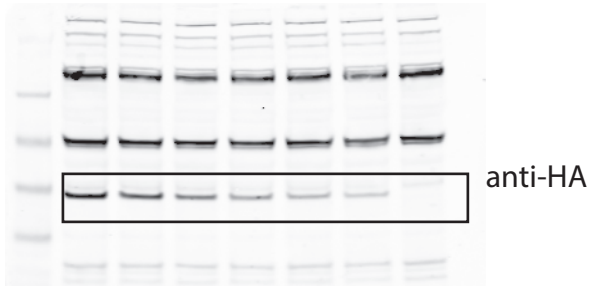
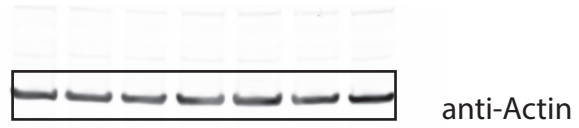
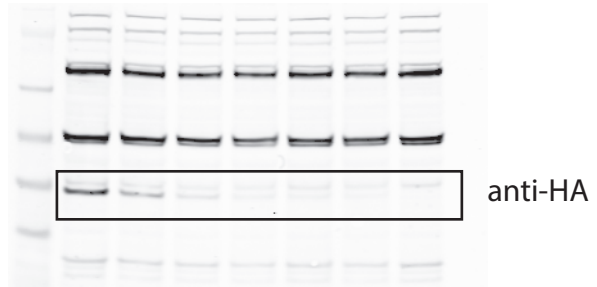


Figure 7B

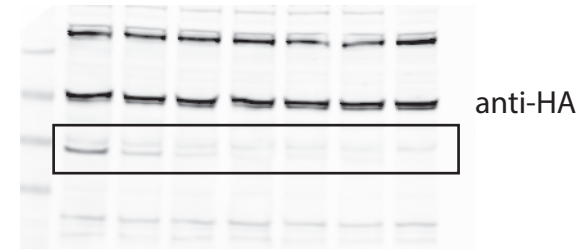




Figure 8A



Figure 8C

