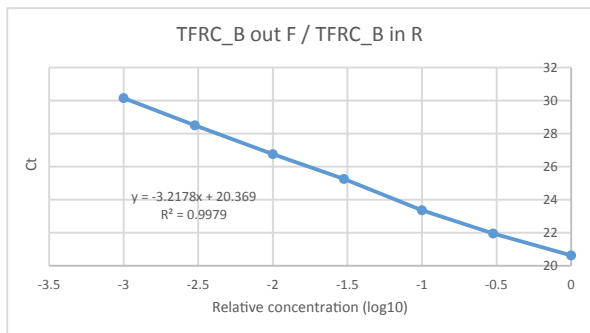
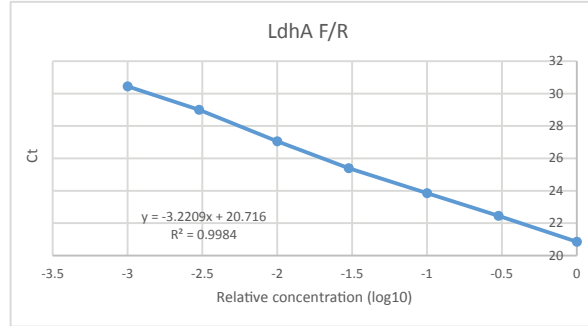
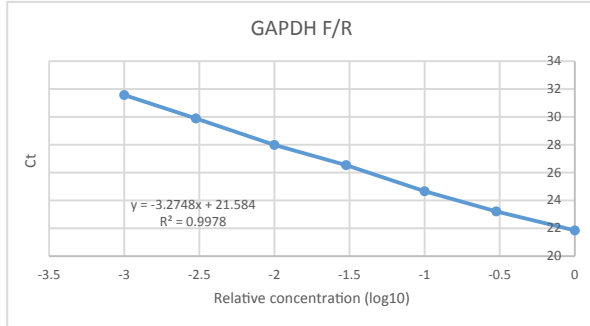


## Primer efficiency calculations for experiments on TFRC promoter.

Primer	Amplification efficiency : $E = 10^{(-1/\text{slope})}$		
	slopes (m)	E	Efficiency (%)
TFRC_B out F/TFRC_B in R	-3.22	2.04536742	105
GAPDH F/R	-3.27	2.02005019	102
LdhA F/R	-3.22	2.04395923	104



## Primer efficiency calculations for experiments on MALAT1 locus.

Efficiency estimated from log linear fit to the red, linear region.

Primer	Amplification efficiency : $E = 10^{(-1/\text{slope})}$		
	slope (m)	E	Efficiency (%)
Enhancer in F / out R	-2.99	2,15997219	116
Exon in F / out R	-3.27	2,02213617	102
GAPDH F/R	-3,09	2,10680624	111
LdhA F/R	-2,9	2,21221629	121

