

Supplementary Online Content

Bretthauer M, Kaminski MF, Løberg M, et al. Population-based colonoscopy screening for colorectal cancer: a randomized clinical trial. *JAMA Intern Med*. Published online May 9, 2016. doi:10.1001/jamainternmed.2016.0960.

eFigure 1. Participant Pain During and After Colonoscopy per Country With CO₂ or Air Insufflation, Stratified by Sedation

eFigure 2. Statistical Power of the NordICC Trial

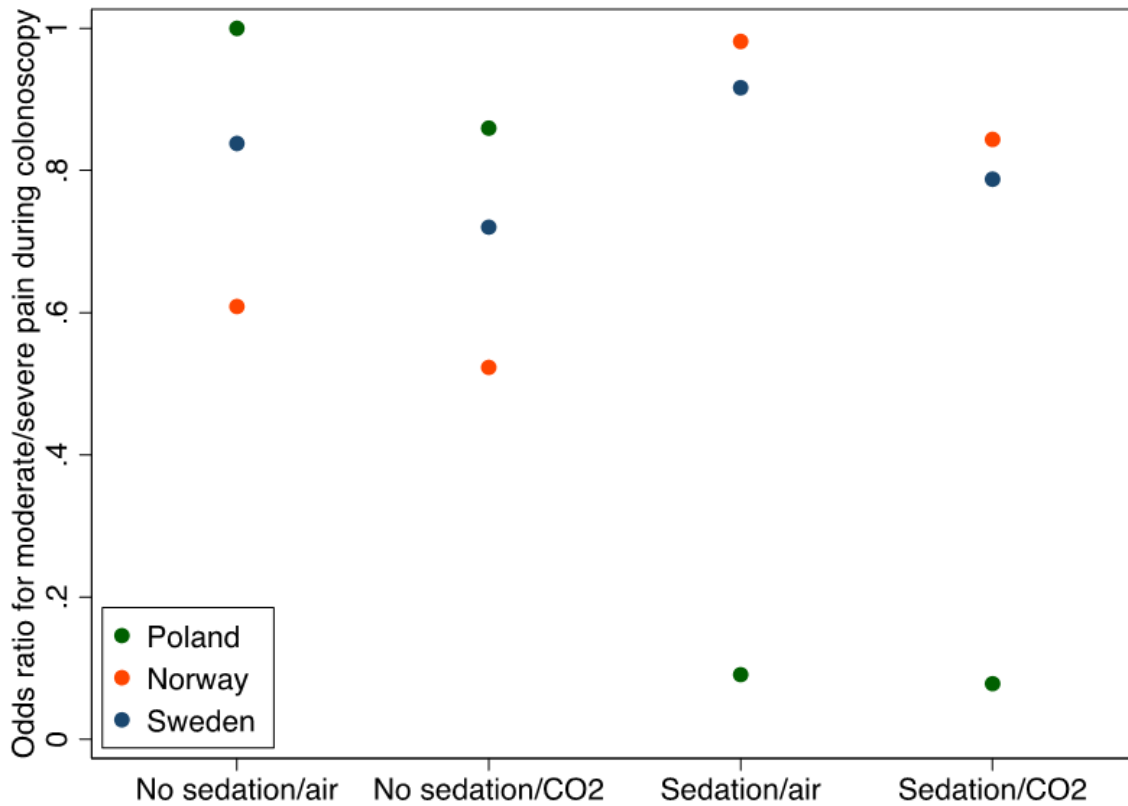
eTable 1. Pain During and After Colonoscopy, Respectively, Using Air or Carbon Dioxide (CO₂) Insufflation in the Participating Countries

eTable 2. Adenoma Detection Rates in the Proximal and in the Distal Colon in the Participating Countries

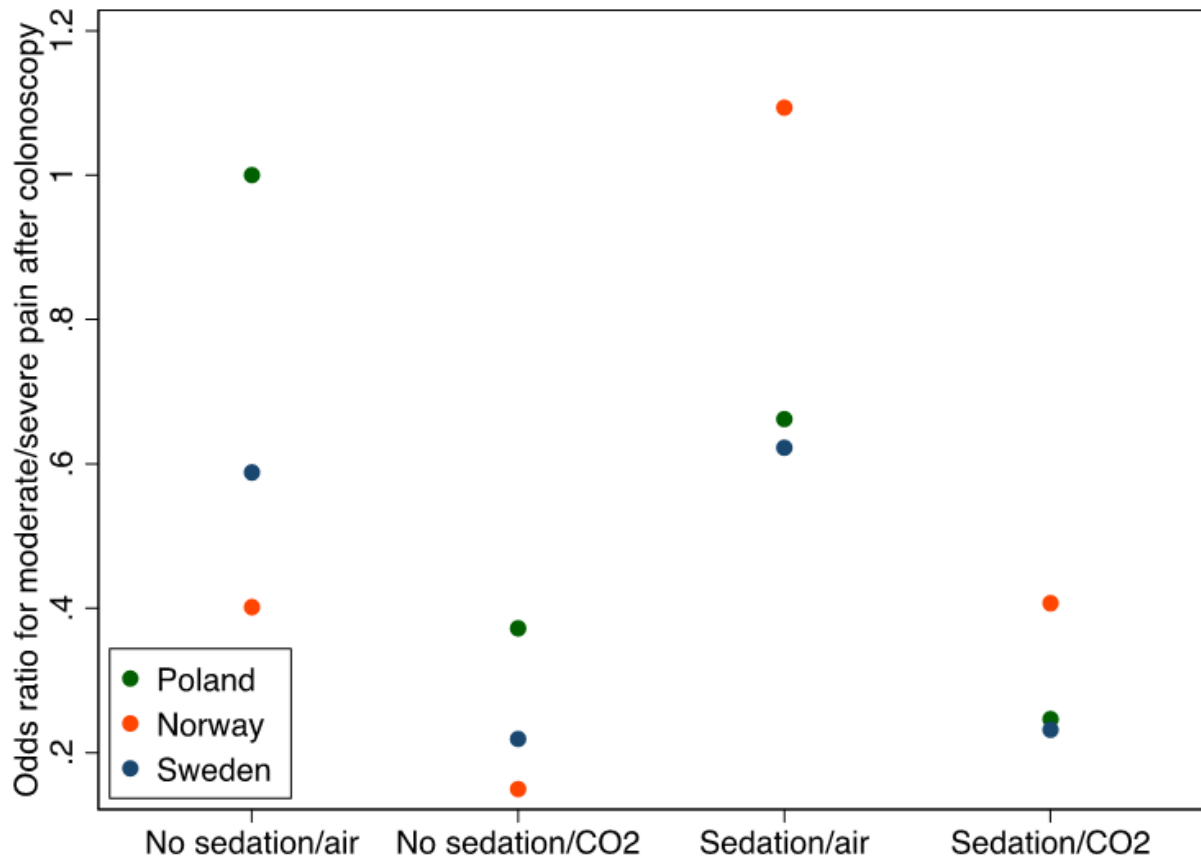
This supplementary material has been provided by the authors to give readers additional information about their work

eFigure 1. Participant Pain During and After Colonoscopy per Country With CO₂ or Air Insufflation, Stratified by Sedation

Panel A: Pain *during* colonoscopy (Reference category: colonoscopies performed in Poland with air for insufflation and no sedation)

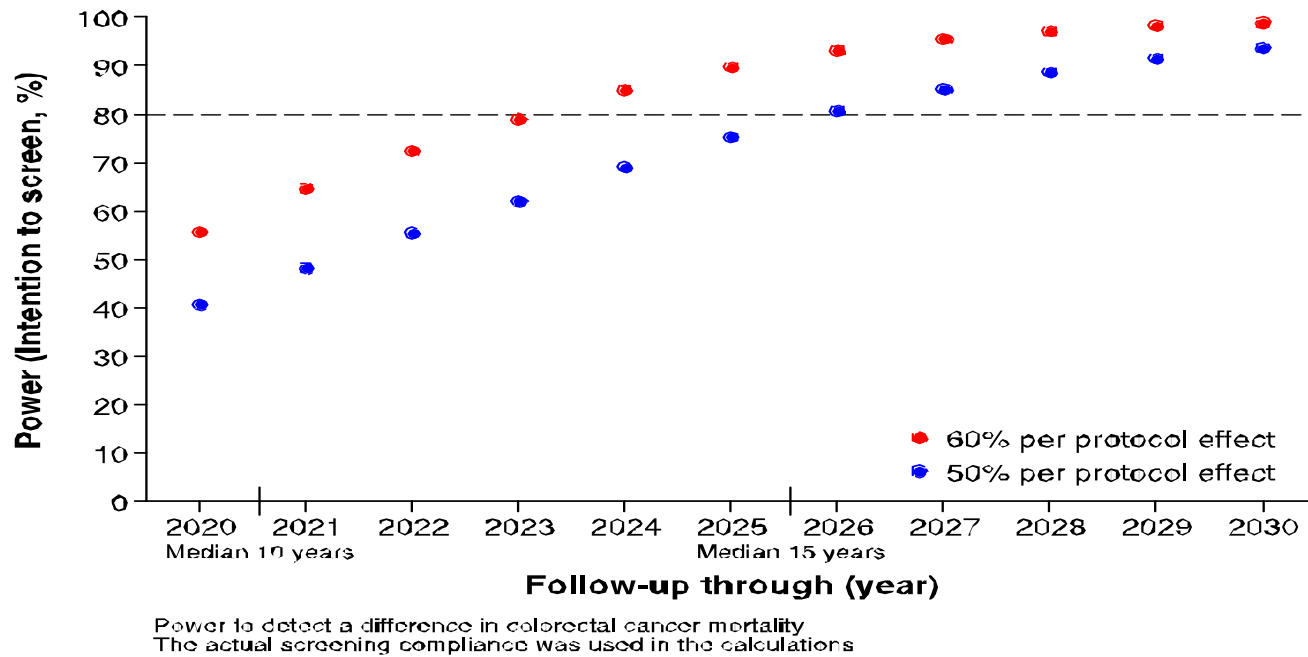


Panel B: Pain *after* colonoscopy (Reference category: colonoscopies performed in Poland with air for insufflation and no sedation)



eFigure 2. Statistical Power of the NordICC Trial

The figure shows different scenarios for statistical power with the actual achieved participation rate of 40.0%. The points display the power to detect a significant difference between the screening group and the control group during increasing follow-up time in an intention-to-treat analysis, given an effect of the intervention in those who participated of 60% (red) and 50% (blue).



eTable 1. Pain During and After Colonoscopy, Respectively, Using Air or Carbon Dioxide (CO₂) Insufflation in the Participating Countries

		Total		Norway		Poland		Sweden	
		Air insufflation	CO2 insufflation	Air insufflation	CO2 insufflation	Air insufflation	CO2 insufflation	Air insufflation	CO2 insufflation
Pain during colonoscopy									
	No/little pain	2,859 (79.2)	4,219 (80.0)	41 (85.4)	3,628 (80.9)	2,811 (79.2)	359 (77.9)	7 (70.0)	232 (71.0)
	Moderate/severe pain	749 (20.8)	1,052 (20.0)	7 (14.6)	855 (19.1)	739 (20.8)	102 (22.1)	3 (30.0)	95 (29.1)
Pain after colonoscopy									
	No/little pain	3,010 (83.3)	5,040 (95.8)	2,960 (83.3)	427 (92.2)	41 (85.4)	4,310 (96.2)	9 (90.0)	307 (94.5)
	Moderate/severe pain	602 (16.7)	223 (4.23)	594 (16.7)	36 (7.8)	7 (14.6)	169 (3.8)	1 (1.0)	18 (5.5)

eTable 2. Adenoma Detection Rates in the Proximal and in the Distal Colon in the Participating Countries

	Overall, n(%)	Norway	Poland	Sweden	Netherlands
Adenoma detection	3,863 (30.7)	1,455 (27.2)	2,112 (35.2)	70 (14.4)	226 (31.0)
Proximal	2,274 (18.1)	794 (14.8)	1,315 (21.9)	28 (5.8)	137 (18.8)
Distal	2,408 (19.1)	947 (17.7)	1,269 (21.1)	51 (10.5)	141 (19.3)