

Supplementary Materials: Phytoextract from *Fucus vesiculosus* and *Ascophyllum nodosum* Controls Postprandial Plasma Glucose Levels: An In Vitro and In Vivo Study in a Mouse Model of NASH

Daniela Gabbia, Stefano Dall'Acqua, Iole-Maria Di Gangi, Sara Bogialli, Valentina Caputi, Laura Albertoni, Iaria Marsilio, Nicola Paccagnella, Maria Carrara, Maria Cecilia Giron and Sara De Martin

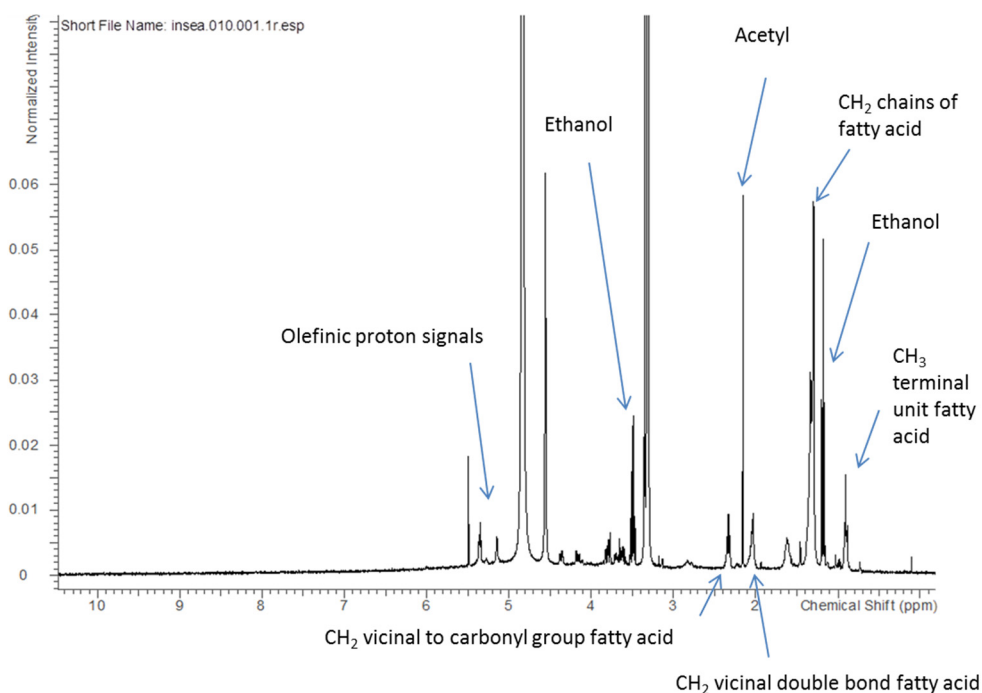


Figure S1. ¹H-NMR spectrum of the algal extract in deuterated methanol.

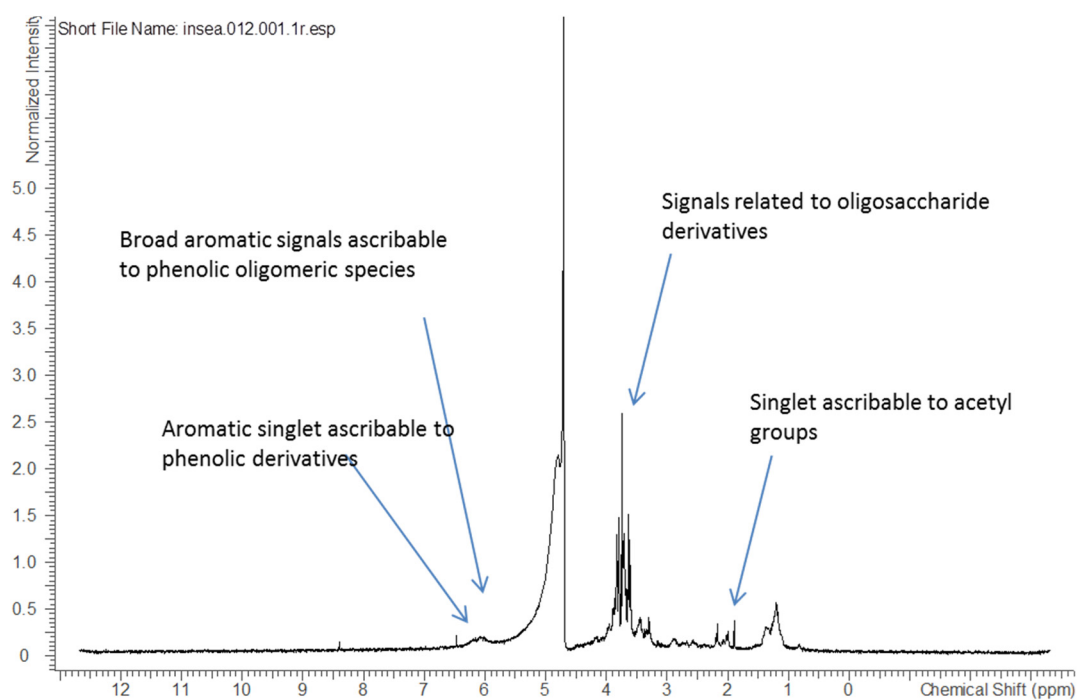


Figure S2. ¹H-NMR spectrum of the algal extract in deuterated water.

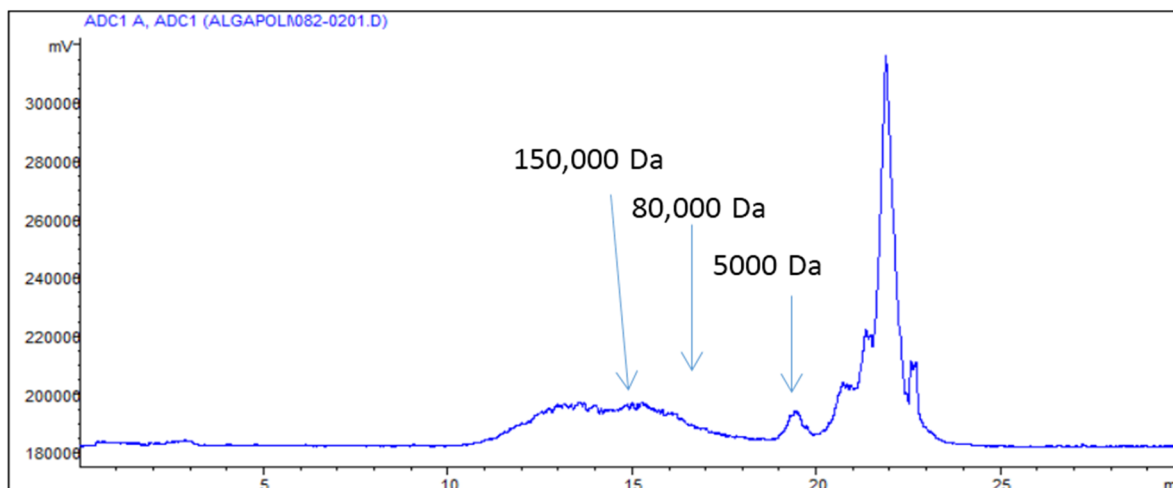


Figure S3. HPLC with gel permeation.

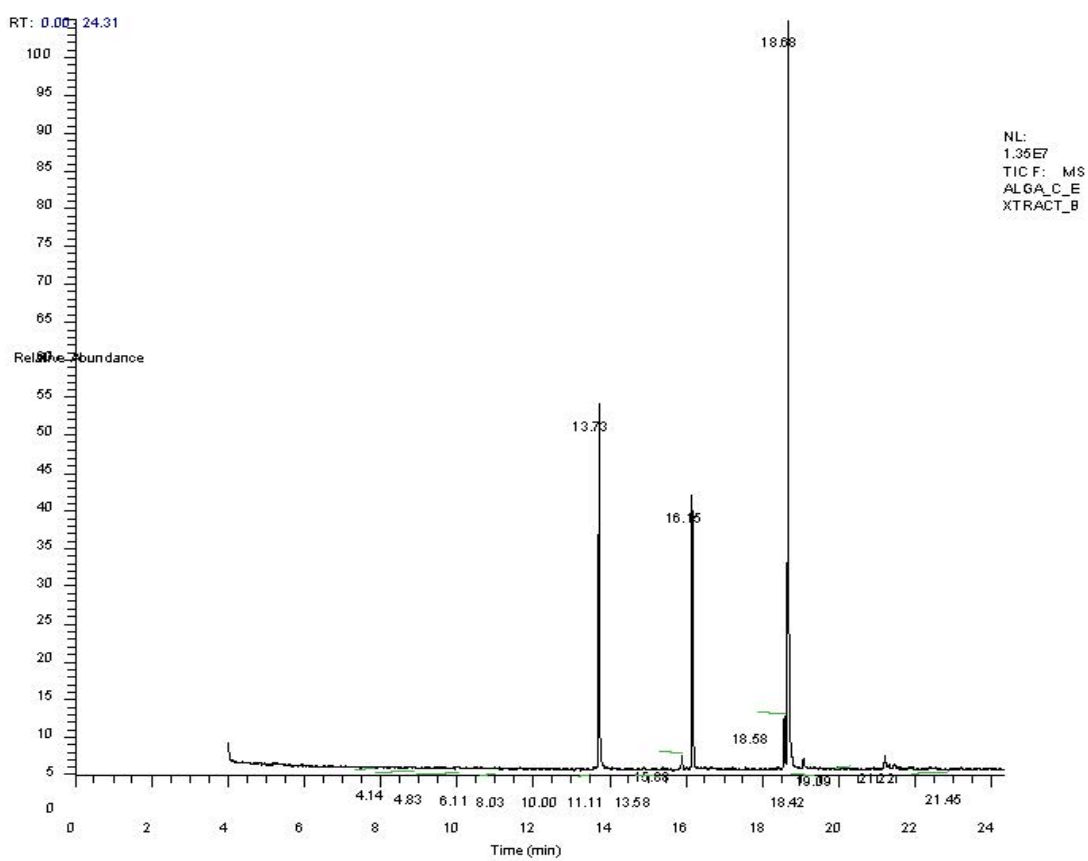


Figure S4. GC-MS chromatogram to identification of methylated fatty acids.