

Proline dehydrogenase from *Thermus thermophilus* does not discriminate between FAD and FMN as cofactor

Mieke M.E. Huijbers, Marta Martínez-Júlvez, Adrie H. Westphal, Estela Delgado-Arciniega,
Milagros Medina and Willem J.H. van Berkel

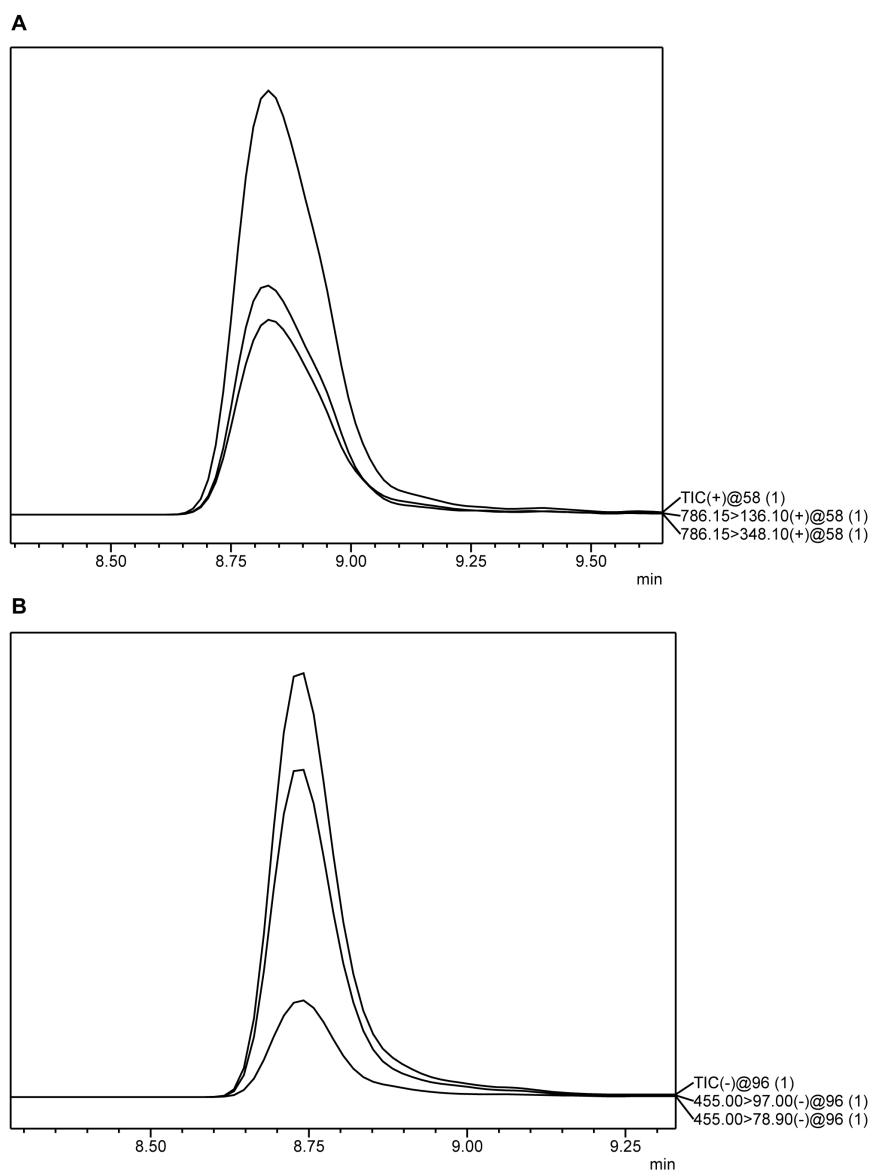


Figure S1.

Analysis of the flavin extracted from TtProDH Δ ABC using a Shimadzu UPLC-triple quad mass spectrometer (LC/MS-8040).

(A) Detection of FAD in positive mode for the transition of 786.15 to 136.10 m/z and from 786.15 to 348.10 m/z at 8.85 min.

(B) Detection of FMN in negative mode for the transition of 455.00 to 97.00 m/z and from 455.00 to 78.90 m/z at 8.73 min.