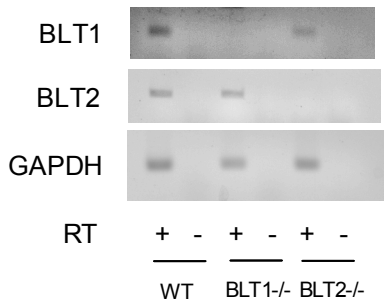


Supplemental Figure S1



Supplemental Figure S1. Expression of BLT1 and BLT2 in BMDM. BMDM were isolated from WT, BLT1^{-/-}, or BLT2^{-/-} mice. Total mRNA was collected and incubated with (+) or without (-) reverse transcriptase (RT) prior to amplification using qRT-PCR and primers specific for BLT1, BLT2 and GAPDH. Amplified samples were visualized on a 2% agarose gel.