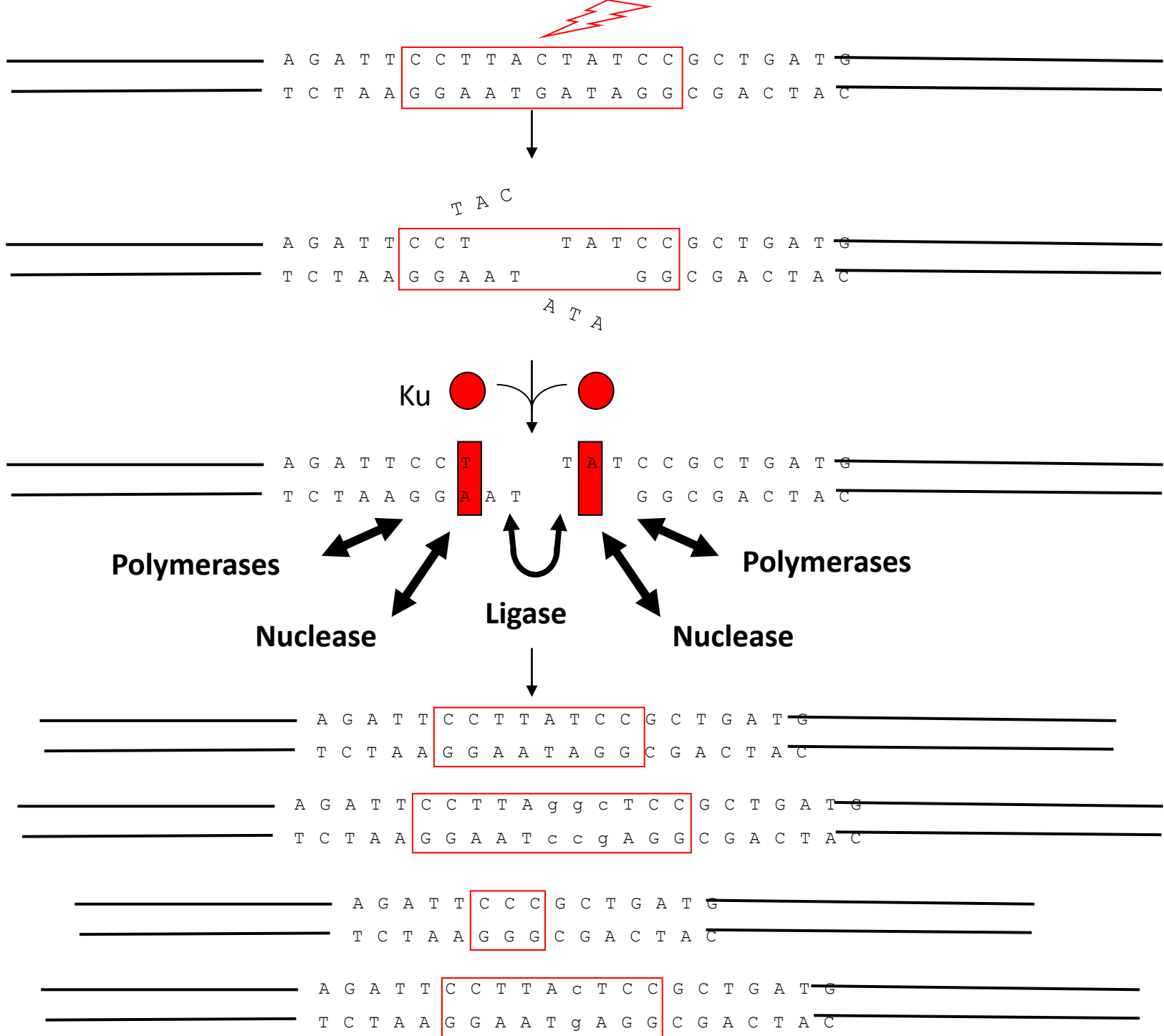
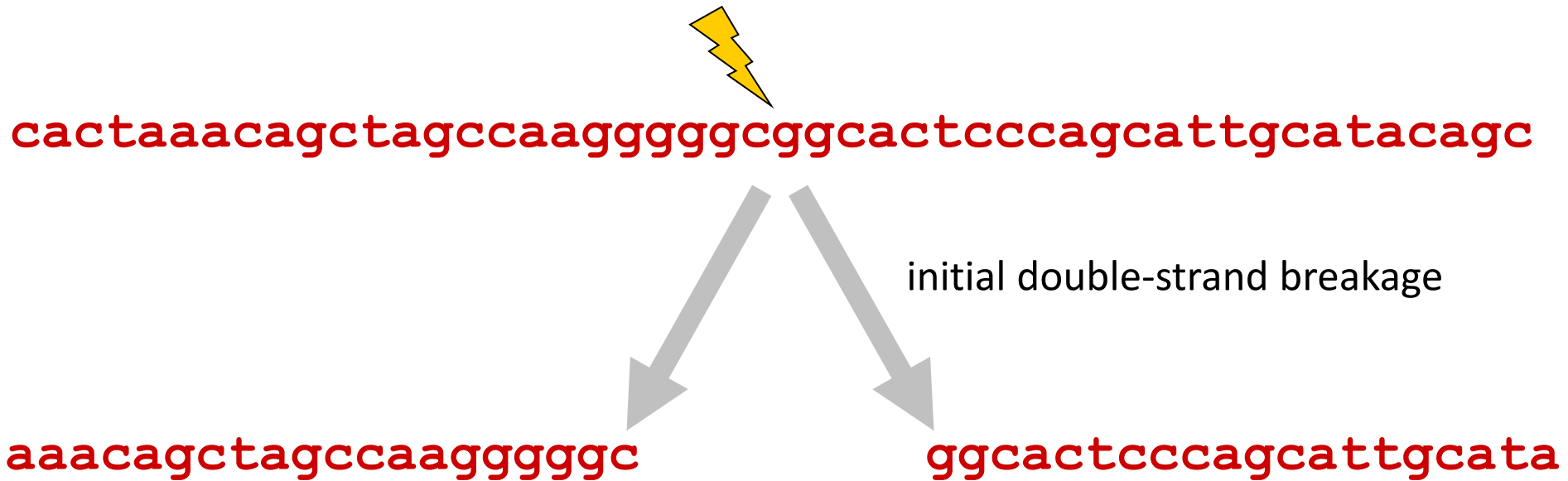


SUPPLEMENTAL FIGURES 1 to 7

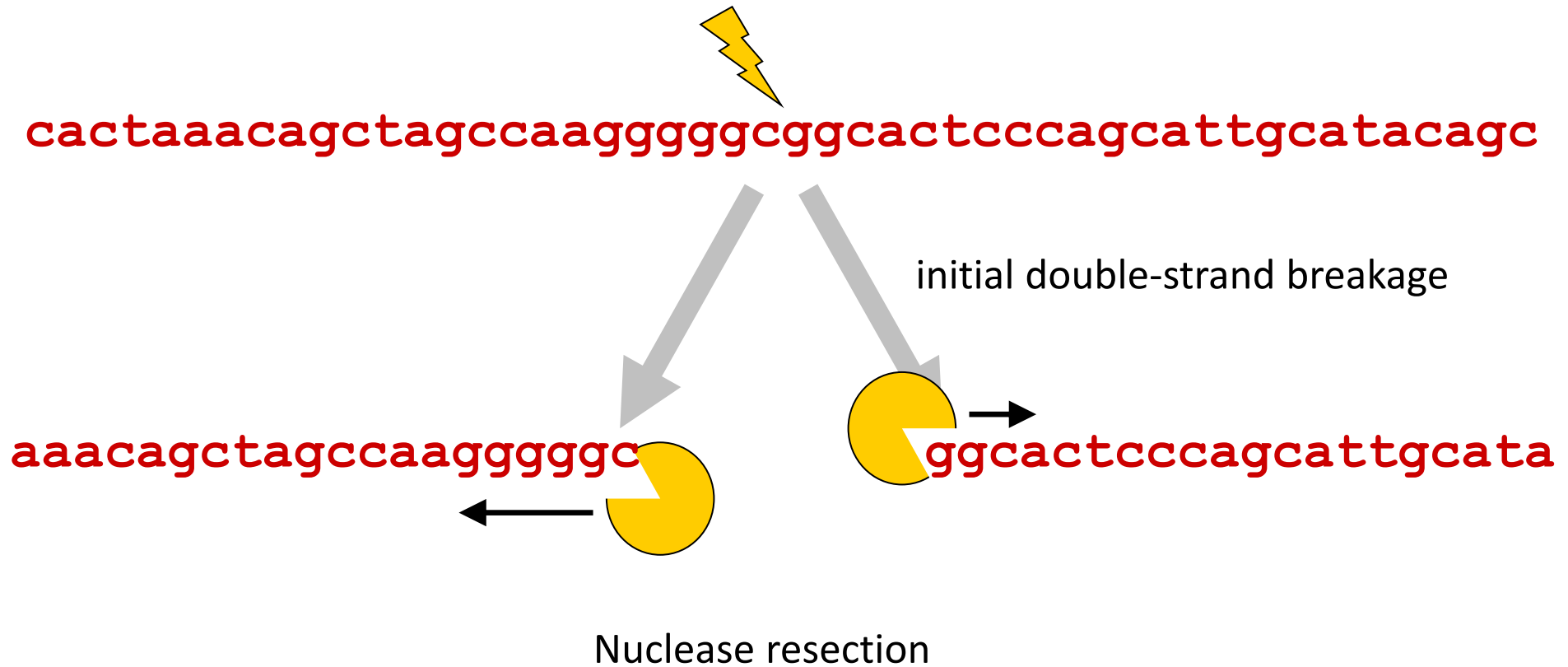


Suppl. Fig. 1

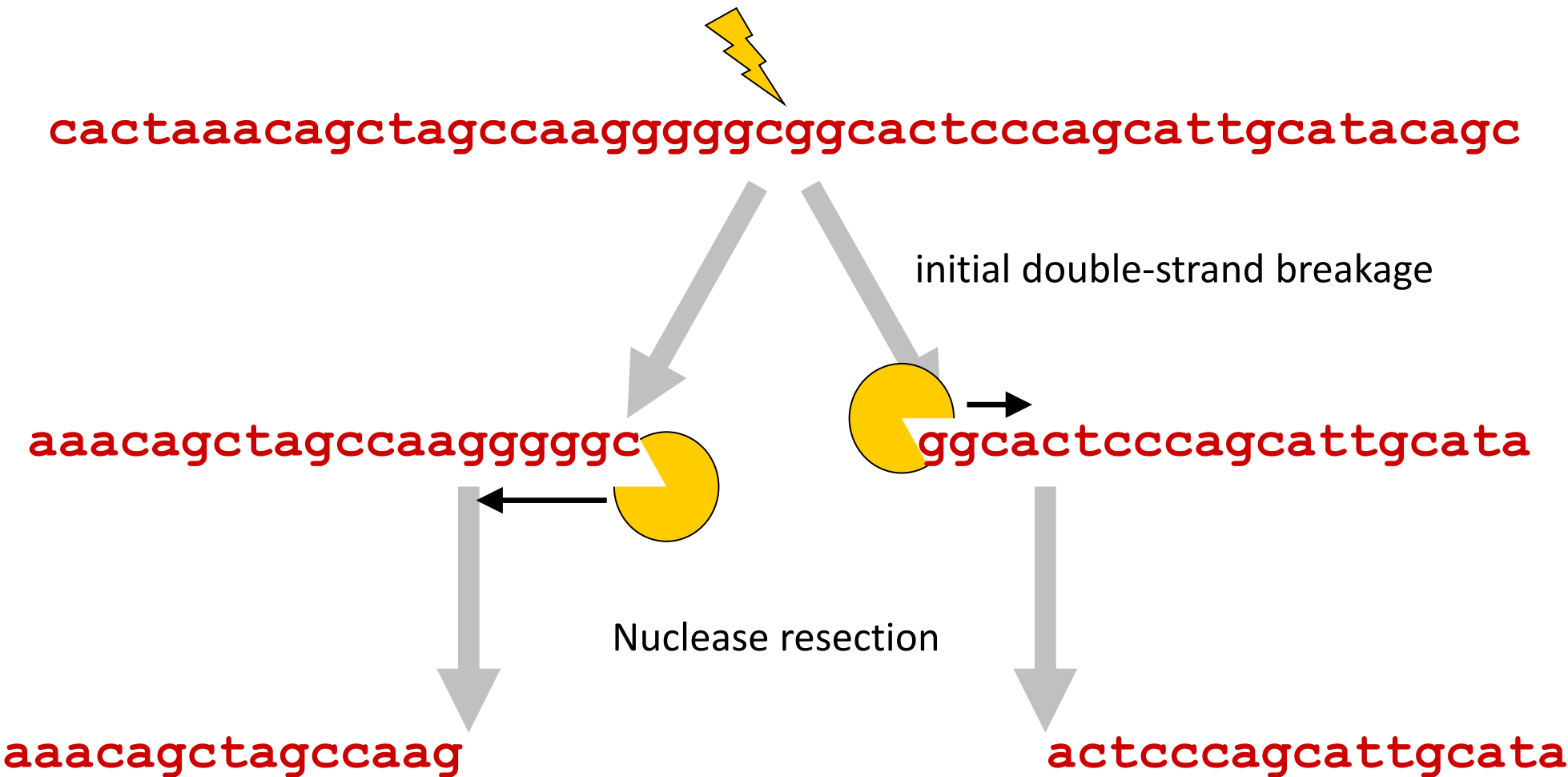
Balanced translocations provide a window within which initial breakage occurred



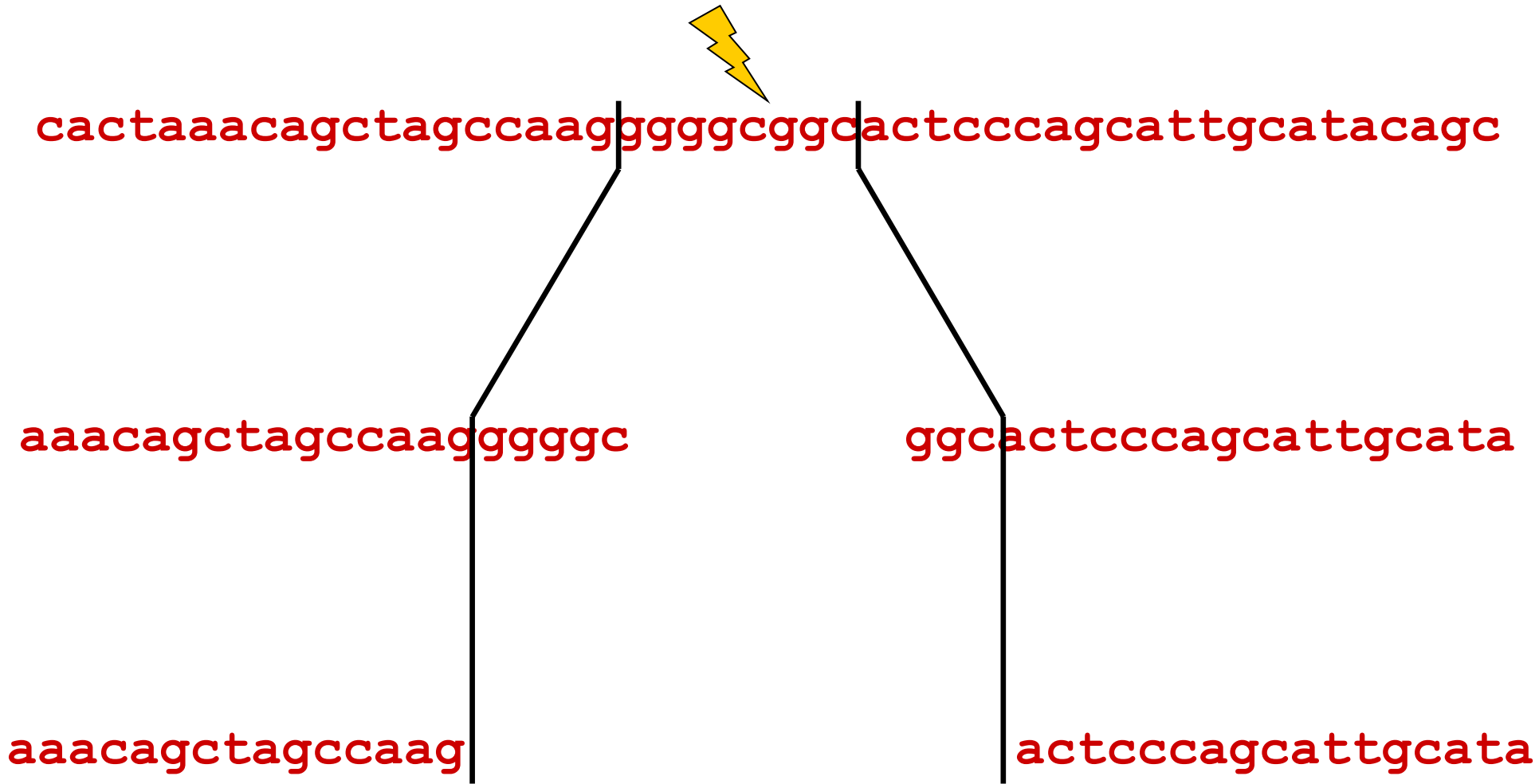
Balanced translocations provide a window within which initial breakage occurred

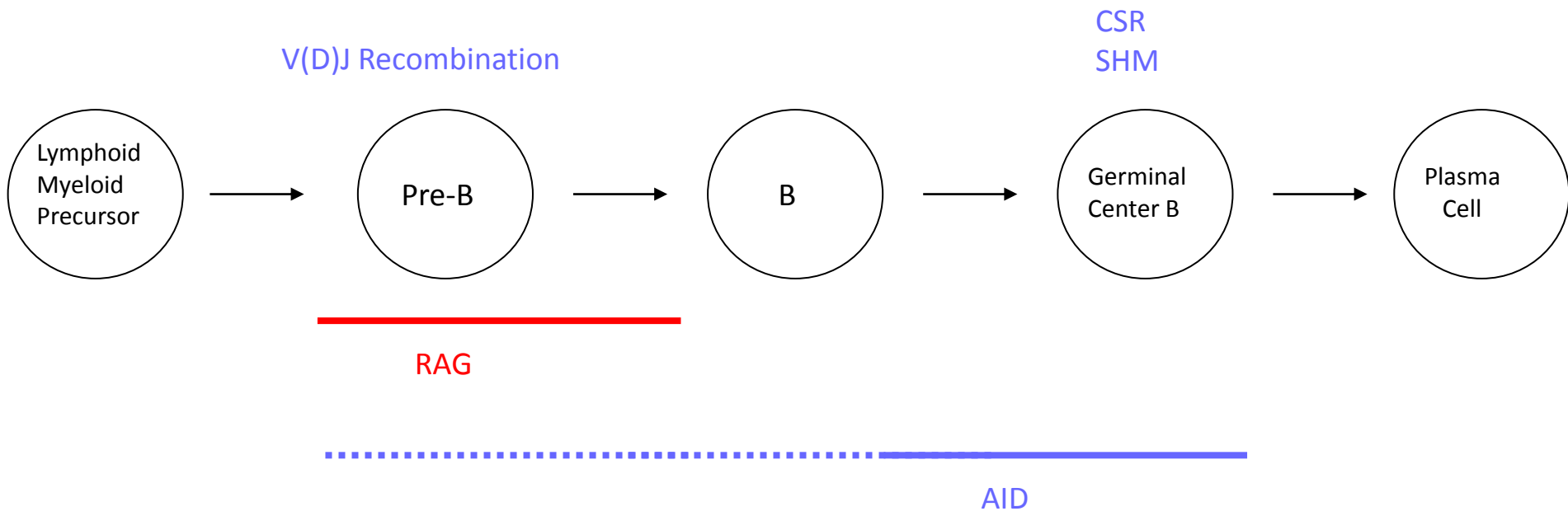


Balanced translocations provide a window within which initial breakage occurred



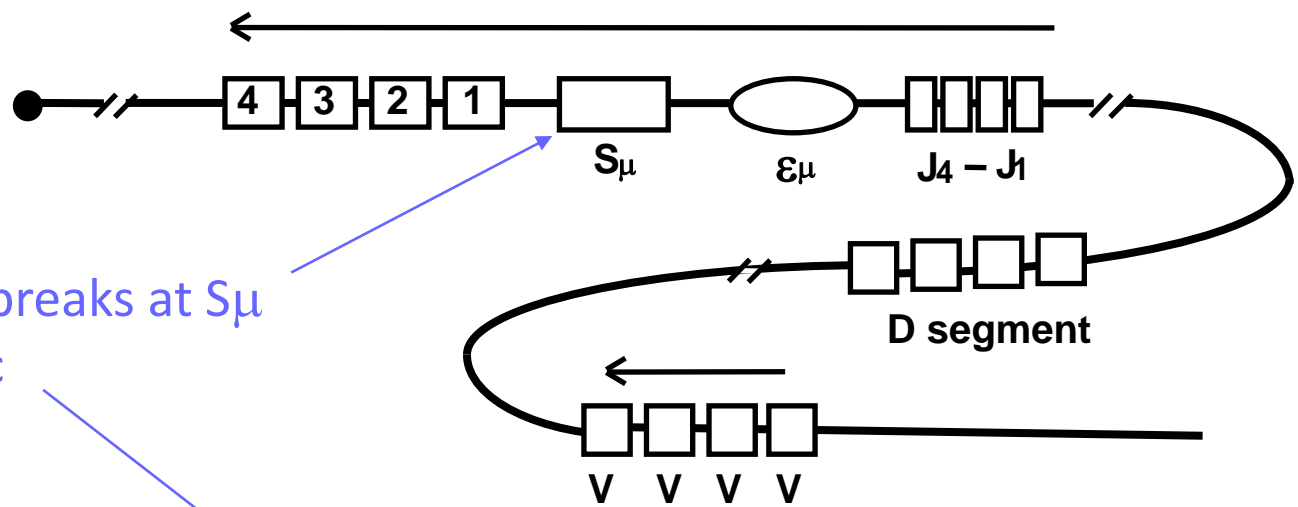
Balanced translocations provide a window within which initial breakage occurred





Suppl. Fig. 3

14q32



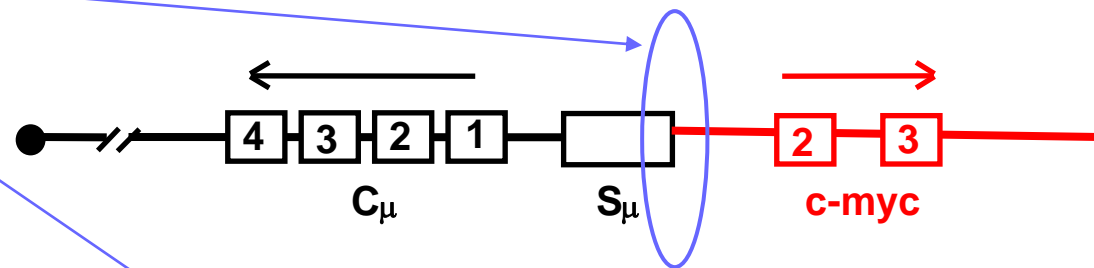
8q24



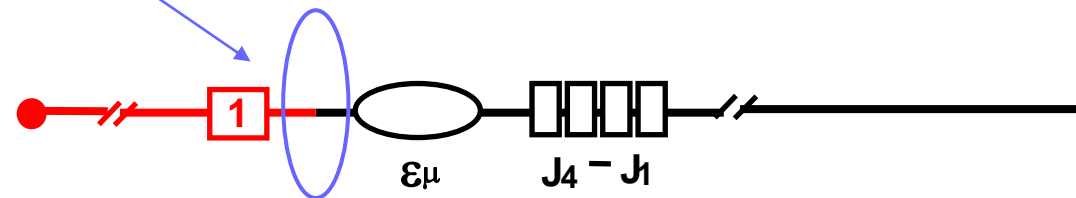
Mechanism of rejoining is by NHEJ, like nearly all translocations

$t(8;14)(q24;q32)$

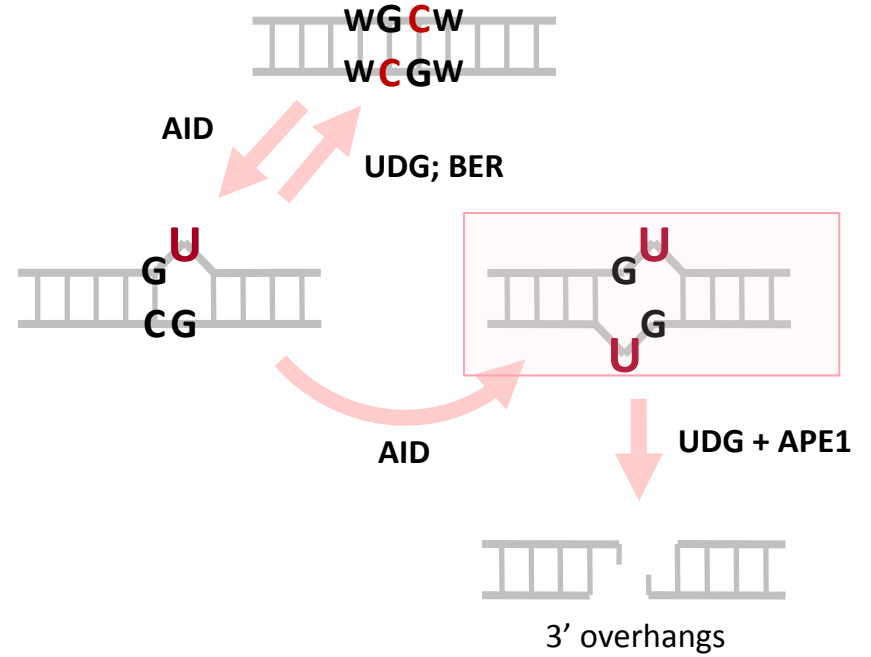
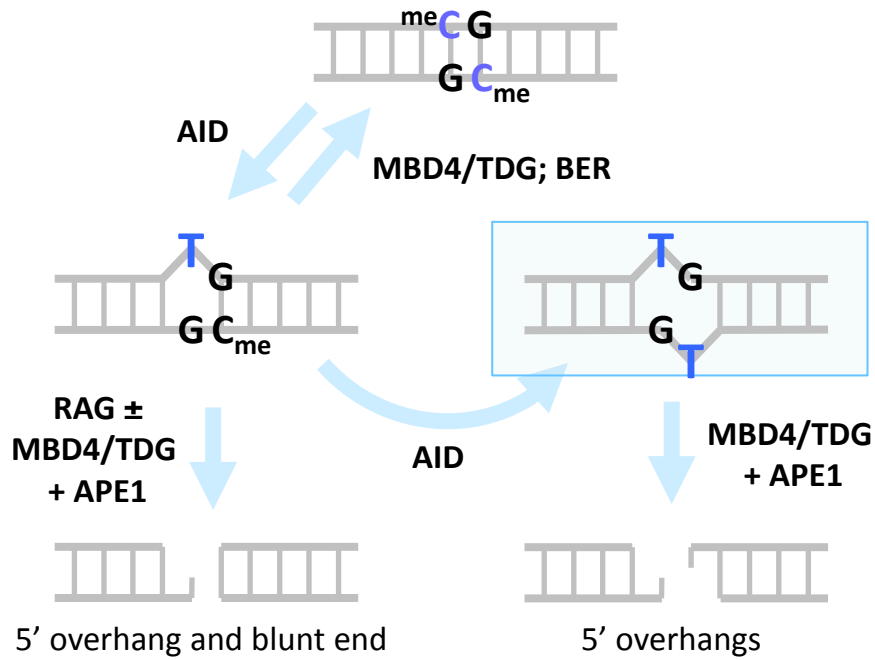
der 14



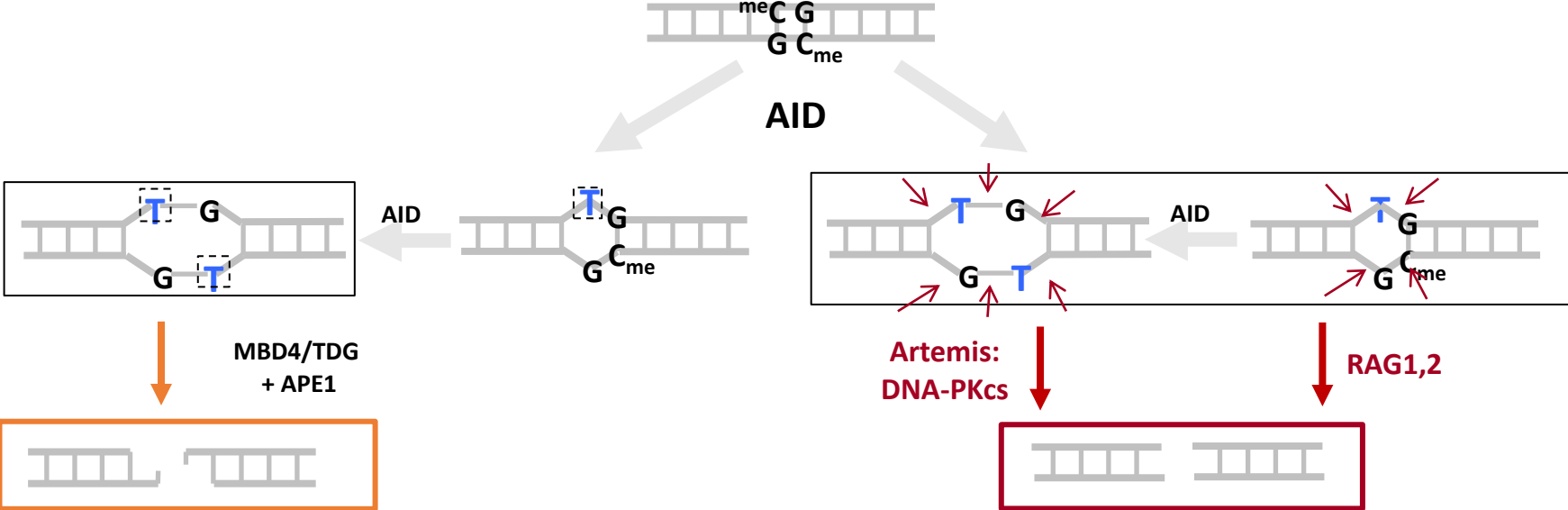
der 8

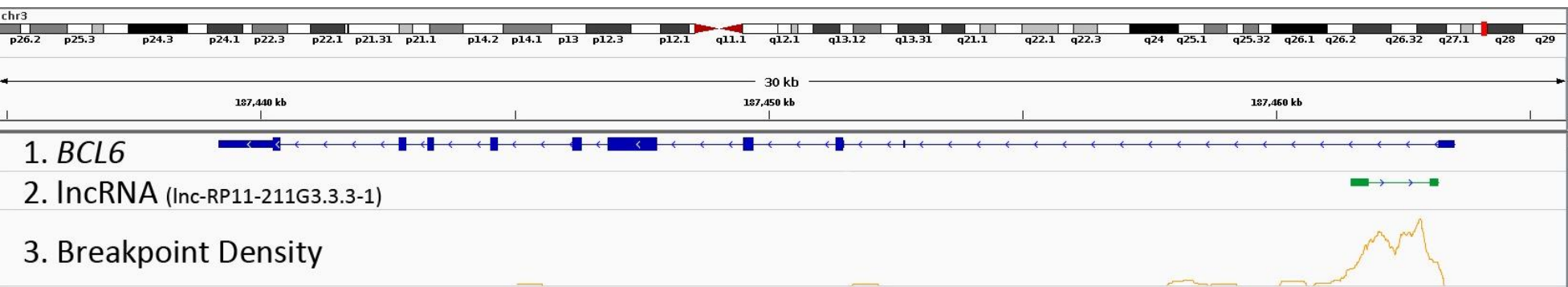


CG and wGCw pack C's close together on anti-parallel strands



Pathways by Which AID-Induced T:G Mismatches Lead to DSBs





Suppl. Fig. 7