

SUPPLEMENTAL TABLE 1

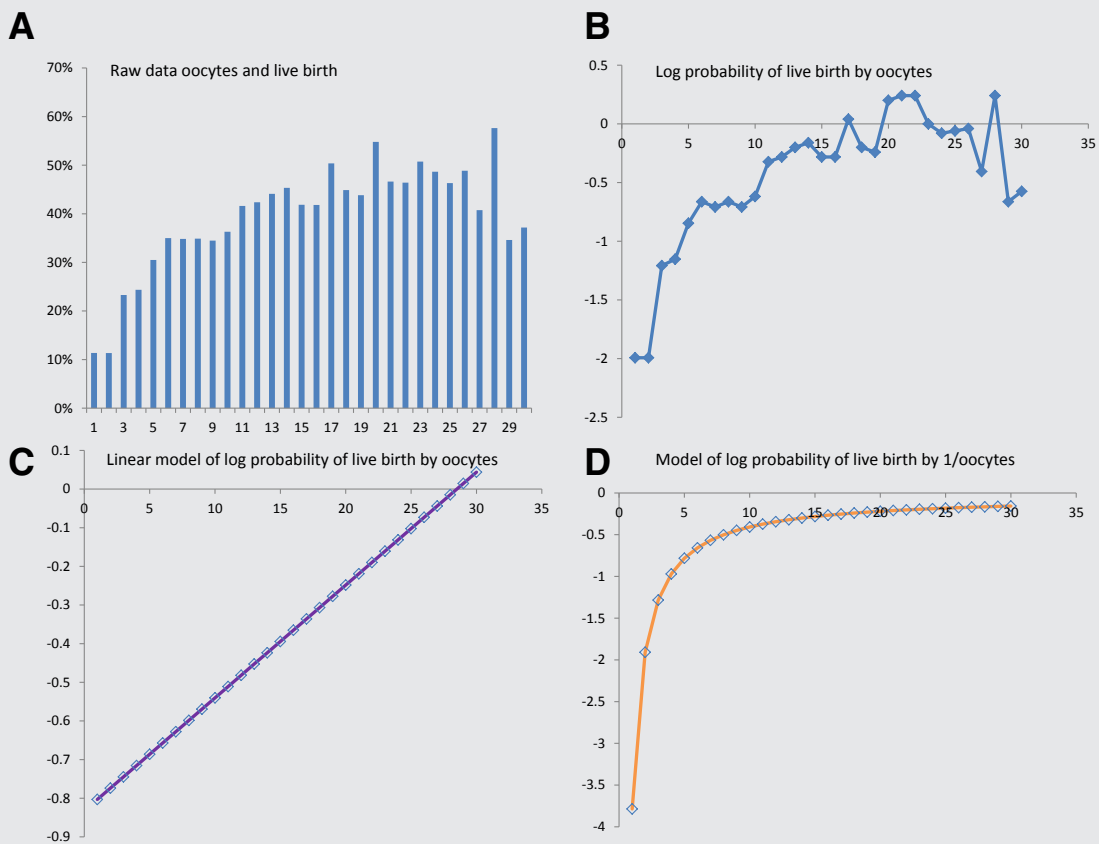
Baseline and ART characteristics of the population.

Variable	Value
Age (y)	35.0 (32–39)
Body mass index (kg/m ²)	25 (22–29)
E ₂ on day of trigger (pg/mL)	2,230 (1,590–3,041)
Primary infertility diagnosis (%)	
Male	27
Unexplained	26
Diminished ovarian reserve	12
Ovulatory	12
Tubal	10
Endometriosis	4
Uterine	3
Other	6
P on day of trigger (ng/mL)	0.98 (0.70–1.30)
Total gonadotropins (IU)	3,825 (2,550–6,000)
Oocytes retrieved	12 (8–17)
No. of embryos transferred	1.71 ± 0.41
Blastocyst stage transfer (%)	67
Good grade embryo transfer (%)	85
Live birth (%)	40

Note: Values are median (IQR) or mean ± SD or overall percentage.

Hill. Progesterone to oocyte ratio. *Fertil Steril* 2016.

SUPPLEMENTAL FIGURE 1



Visual demonstration of how changing oocytes to 1/oocytes may affect modeling. Oocytes is on the x-axis of all graphs. Raw live birth percentage (A) and log probability of live birth (B–D) is on the y-axis. (A) Raw live birth rates per oocytes retrieved. (B) Log probability of live birth by oocytes retrieved. (C) Linear probability of live birth by oocytes retrieved. (D) Log probability of live birth by 1/oocytes.

Hill. Progesterone to oocyte ratio. *Fertil Steril* 2016.